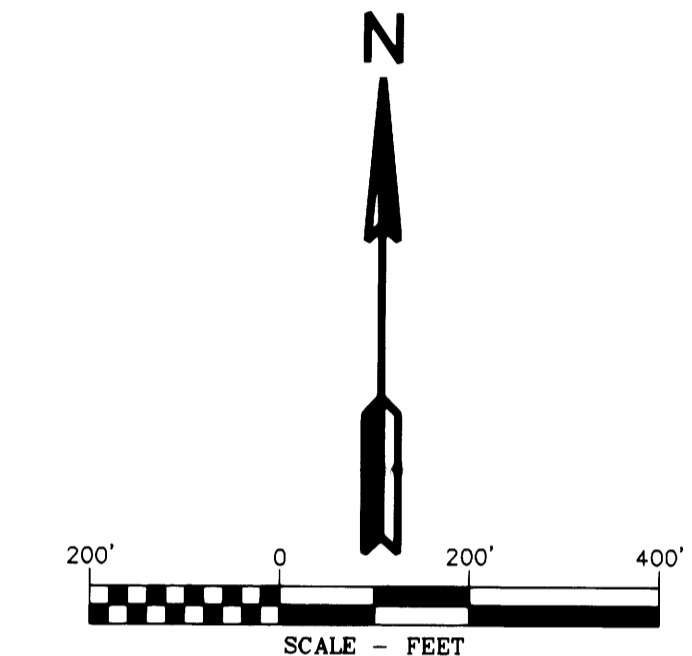
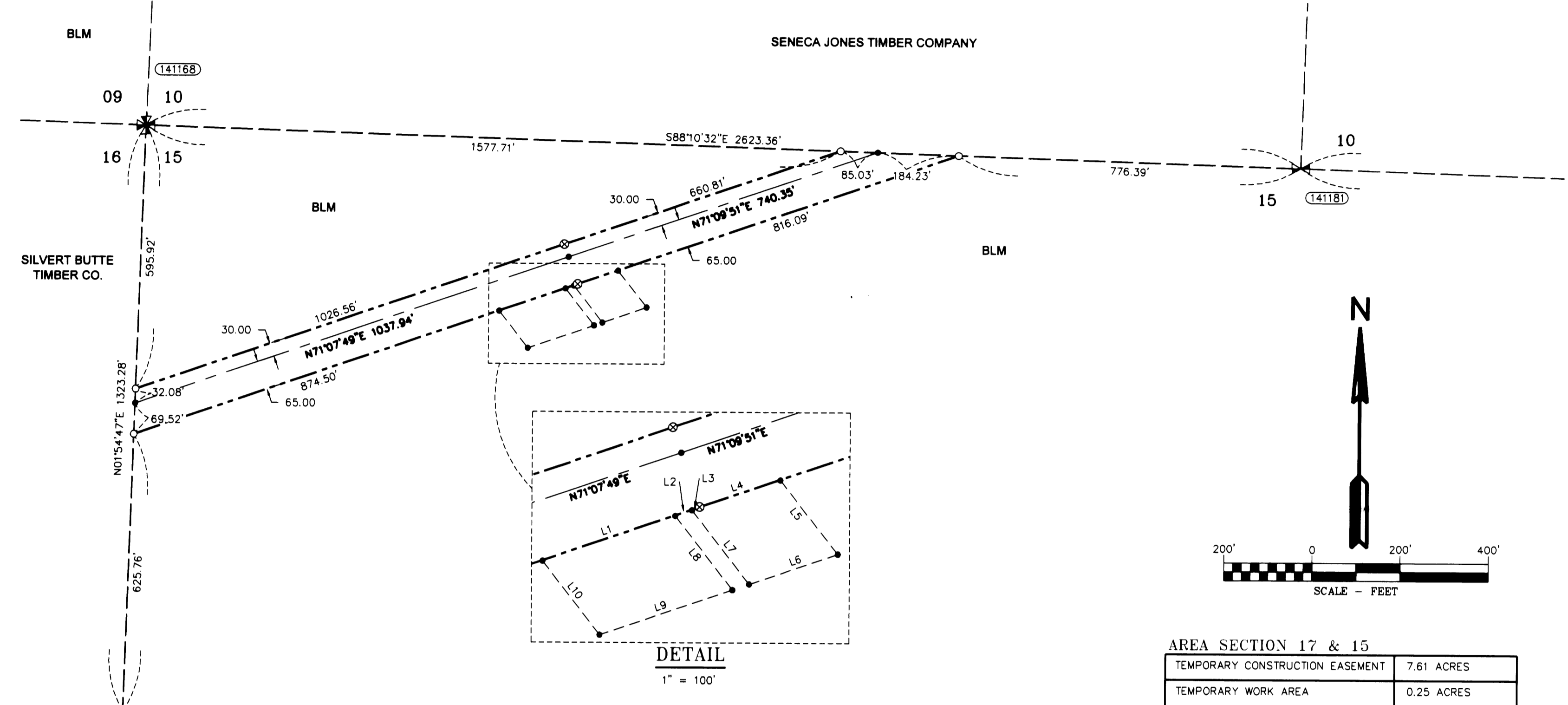
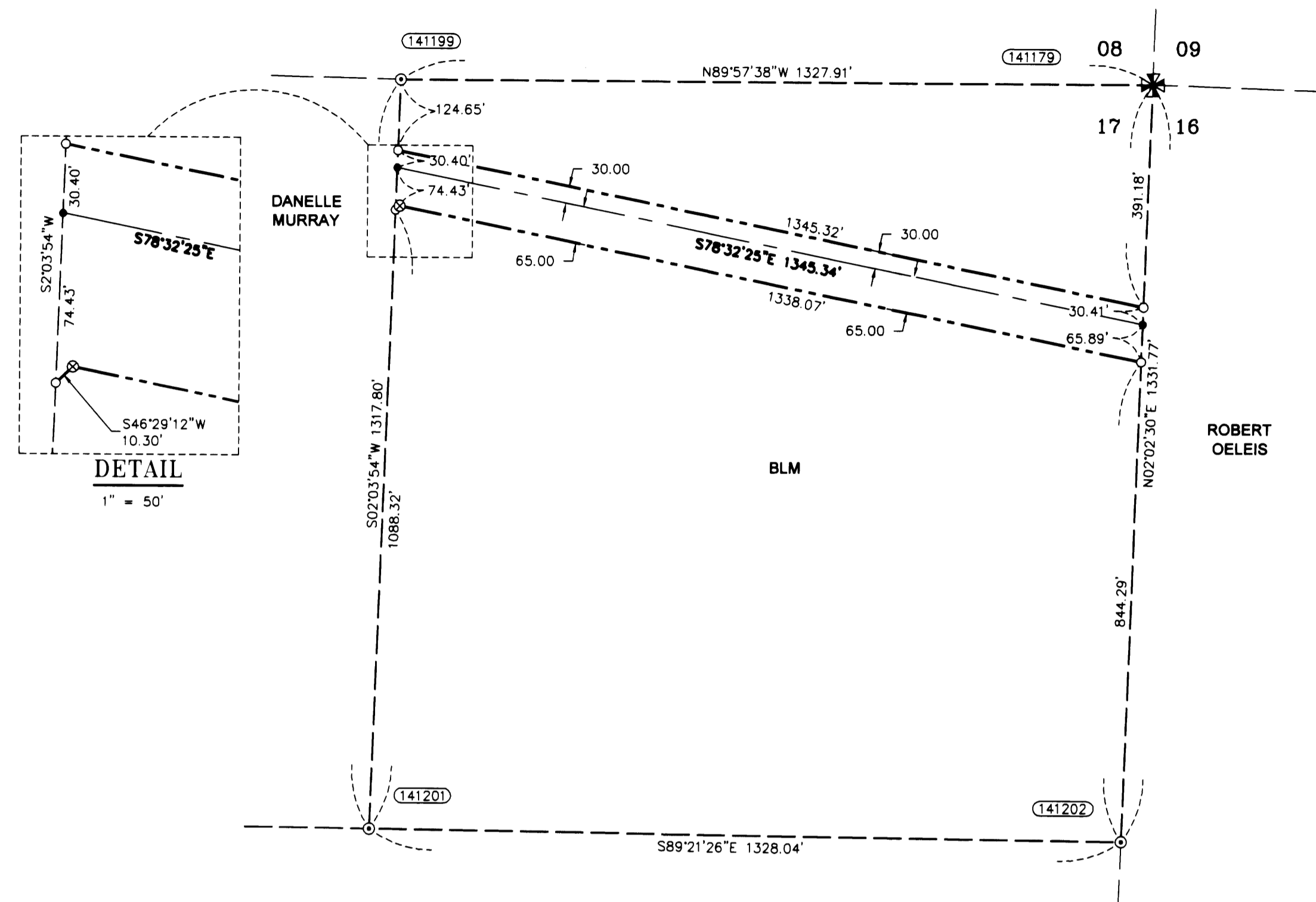


RECORD OF SURVEY

LOCATED IN
THE NE 1/4 OF SECTION 17
AND
THE NW 1/4 OF SECTION 15
TOWNSHIP 29 SOUTH, RANGE 8 WEST, W.M.
DOUGLAS COUNTY, OREGON
REVISED BY M166-41 B

FILED
Date: 11/14/2014 By: J.C.
This survey consists of:
Map: M166-24 A-D
North arrow: REVISED BY M166-41A-D
Corner Rpt:

DOUGLAS COUNTY
SURVEYOR



AREA SECTION 17 & 15	
TEMPORARY CONSTRUCTION EASEMENT	7.61 ACRES
TEMPORARY WORK AREA	0.25 ACRES

CORNER NOTES:

- (141179) NE CORNER SECTION 17
FOUND 2.5" BRASS CAP
STAMPED COUNTY SURVEYOR OFFICE 1958
RESET 2009.
BT REFERENCES:
1) 27" CEDAR WITH HEALED FACE
AND TAG DATED 11/95
N 49° E - 47.5'
2) 17" FIR WITH HEALED FACE
AND TAG DATED 11/95
S 57° E - 35.0'
3) 22" FIR WITH HEALED FACE
AND TAG DATED 11/95
S 68-1/4° W - 46.9'
4) 23" CEDAR WITH HEALED FACE
AND TAG DATED 11/95
N 11-1/4° W - 60.1'
- (141179) EAST 1/16 CORNER SECTIONS 17/18
FOUND 2" ALUMINUM CAP
STAMPED LS 2354 DATED 1995 R.R.CO
ALSO FOUND 3.25" BLM
BRASS CAP RM-29.2 TO CORNER
BT REFERENCES:
1) 18" FIR SNAG 40' TALL WITH HEALED FACE
AND TAG DATED 11/95
N 48-1/4° E - 37.0'
2) 20" FIR WITH HEALED FACE
AND TAG DATED 11/95
S 75-3/4° E - 33.7'
3) 20" FIR WITH HEALED FACE
AND TAG DATED 11/95
S 47° E - 40.3'
4) 18" FIR WITH HEALED FACE
N 3-1/2° W - 35.6'
- (141201) NE 1/16 CORNER SECTION 17
FOUND 3.25" BRASS CAP
STAMPED BLM 1995
BT REFERENCES:
1) 19.5" OAK WITH HEALED FACE
AND TAG DATED 11/95
N 43-3/4° E - 62.7'
2) 19" FIR WITH HEALED FACE
AND TAG DATED 11/95
N 0-1/4° W - 15.8'
- (14202) NORTH 1/16 CORNER SECTIONS 17/16
FOUND 3.25" BRASS CAP
STAMPED BLM 1995
BT REFERENCES:
1) 8" OAK WITH HEALED FACE
S 16° E
DISTANCE NOT MEASURED (PRIVATE PROPERTY)
2) 23" FIR WITH HEALED FACE
AND TAG DATED 11/95
N 59-1/2° W - 16.8'

CORNER NOTES:

- (141184) NW CORNER SECTION 15
FOUND 2.5" BRASS CAP
STAMPED COUNTY SURVEYOR OFFICE 1958
BT REFERENCES:
1) 48" FIR STUMP
AND TAG DATED 3/1/78
N 10° E - 24.5'
2) 23.5" FIR WITH HEALED FACE
TAG DATED 3/1/78
S 13° E - 34.0'
3) 16" FIR WITH HEALED FACE
AND TAG DATED 3/1/78
S 59° W - 41.0'
4) 19" FIR WITH HEALED FACE
N 71° W - 15.4'
- (141184) NORTH 1/16 CORNER SECTIONS 15/16
FOUND 3.25" BRASS CAP
STAMPED BLM 1982
BT REFERENCES:
1) 16" FIR WITH HEALED FACE
AND TAG DATED 7/82
N 78° E - 10.9'
2) 19" FIR WITH HEALED FACE
AND TAG DATED 7/82
N 77-1/2° W - 18.8'
- (141189) WEST 1/4 CORNER SECTION 15
FOUND 3.25" BRASS CAP
STAMPED BLM 1982
BT REFERENCES:
1) 18.5" FIR WITH HEALED FACE
AND TAG DATED 7/82
S 85° E - 13.2'
2) 19" FIR WITH HEALED FACE
AND TAG DATED 7/82
N 24-1/2° W - 19.8'
- (141184) NORTH 1/4 CORNER SECTION 15
FOUND 3.25" BRASS CAP
STAMPED BLM 1980
BT REFERENCES:
1) 15" FIR SNAG 12' TALL WITH HEALED FACE
AND TAG DATED 7/80
S 0-1/2° W - 6.9'
2) 22" FIR WITH HEALED FACE
TAG DATED 7/80
N 50° W - 24.4'
3) SET NEW BT
21.5" CHINQUAPIN WITH BLAZED FACE
AND SET TAG DATED 4/12/14
S 40° E - 13.2' TO NAIL SIDE CENTER

LEGEND

- SET 5/8" X 24" REBAR WITH 1 1/4" YELLOW PLASTIC CAP (KLEIN & ASSOC. LS 59002)
- ⊗ SET 5/8" X 24" REBAR WITH 1 1/4" YELLOW PLASTIC CAP (DYER PARTNER LS 2340)
- ⊙ FOUND MONUMENT AS NOTED (SEE CORNER NOTES)
- COMPUTED POINT, NOT MONUMENTED
- ⊠ FOUND QUARTER CORNER
SEE CORNER NOTES
- ⊠ FOUND SECTION CORNER
SEE CORNER NOTES
- ⊠ COMPUTED QUARTER CORNER
- ⊠ COMPUTED SECTION CORNER
- ⑩ POINT NUMBER
- PROPOSED ALIGNMENT
- - - TEMPORARY CONSTRUCTION EASEMENT
- - - TEMPORARY WORK AREA

LINE TABLE

Line #	Direction	Length
L1	N71°07'49"E	158.80
L2	N71°07'49"E	20.01
L3	N71°07'49"E	9.45
L4	N71°09'51"E	96.43
L5	N38°01'58"W	106.49
L6	N71°08'45"E	105.88
L7	S38°01'58"E	106.52
L8	N38°01'58"W	106.52
L9	N71°08'40"E	158.81
L10	S38°01'56"E	106.48

REGISTERED PROFESSIONAL LAND SURVEYOR
Michael W. Erickson
OREGON
JULY 26, 1988
MICHAEL W. ERICKSON
2340
Expires 12-31-2015

REGISTERED PROFESSIONAL LAND SURVEYOR
James M. Klein
OREGON
JULY 12, 2009
JAMES M. KLEIN
59002
Expires 6-30-2015

THE DYER PARTNERSHIP ENGINEERS & PLANNERS, INC.
1330 Teakwood Avenue / Coos Bay, Oregon 97420
(541) 269-0732 / WWW.DYERPART.COM

Klein & Associates, Inc.
ENGINEERING • SURVEYING • PLANNING
1411 13th Street • Hood River, OR 97031
TEL: 541-386-3322 • FAX: 541-386-2515

PACIFIC CONNECTOR GAS PIPELINE PROJECT
PACIFIC CONNECTOR GAS PIPELINE, LP
SECTION 15 & 17
RECORD OF SURVEY
TOWNSHIP 29 SOUTH, RANGE 8 WEST, W.M.
DOUGLAS COUNTY, OREGON

Pacific Connector
GAS PIPELINE

DRAWN BY: GJD	DATE: 11-11-2014	ISSUED FOR BID:	SCALE: 1" = 200'
CHECKED BY:	DATE:	ISSUED FOR CONSTRUCTION:	
APPROVED BY:	DATE:	DRAWING NUMBER:	SHEET 2 OF 4