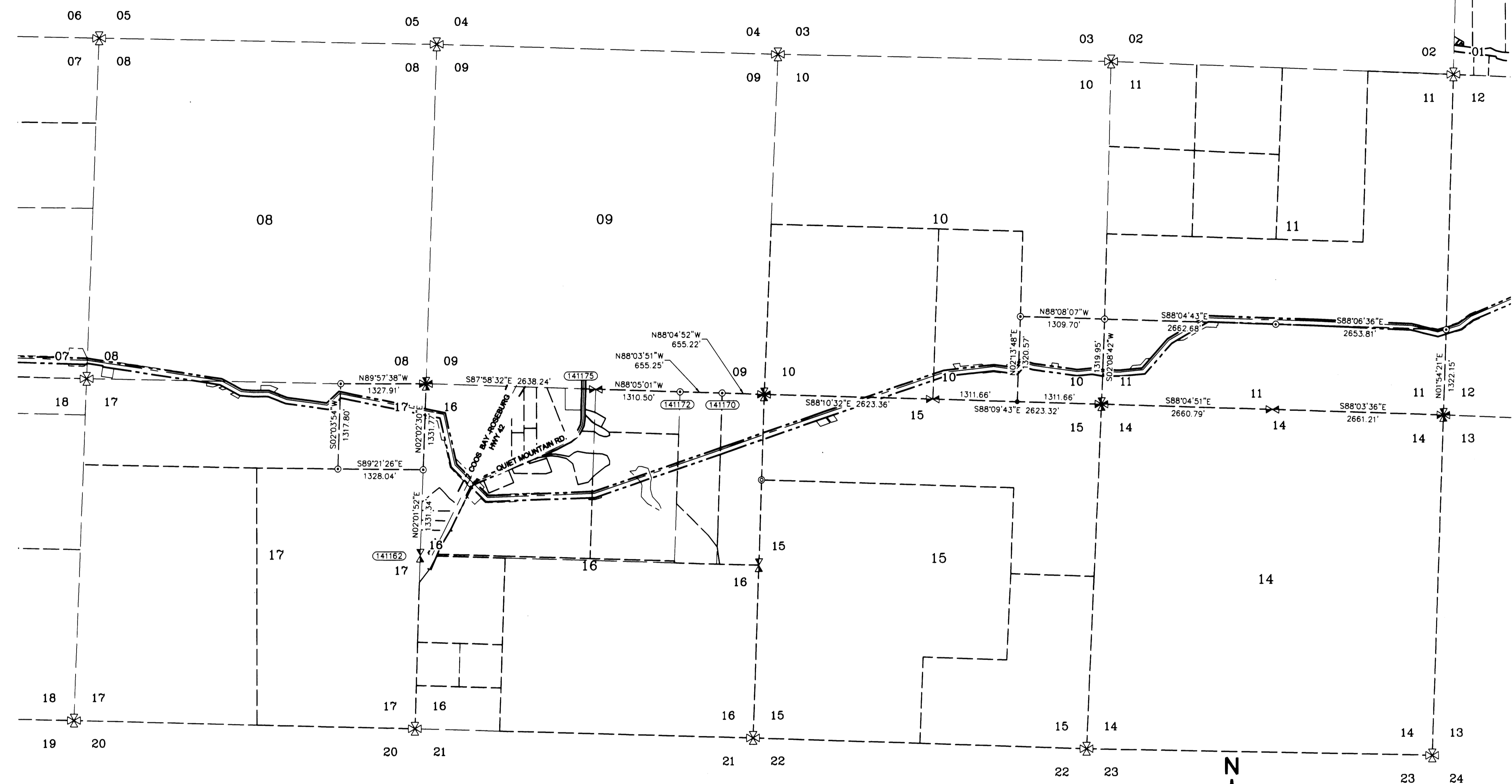


RECORD OF SURVEY

LOCATED IN
 SECTIONS 10, 11, 15 AND 17
 TOWNSHIP 29 SOUTH, RANGE 8 WEST, W.M.
 DOUGLAS COUNTY, OREGON
 REVISED BY M166-41 A

FILED
 Date: 12/14/2014 By: JC
 This survey consists of:
 Map: M166-24 A-D
 Narrative: REVISED BY M166-41 A
 Corner Rpt:
 DOUGLAS COUNTY
 SURVEYOR



CORNER NOTES:

(141162)
 WEST 1/4 CORNER SECTION 16
 FOUND 3.25" BRASS CAP
 STAMPED COUNTY SURVEYORS
 OFFICE DATED 1958
 BT REFERENCES:
 1) 31" CEDAR SNAG WITH HEALED FACE
 AND TAG DATED 8/20/76
 N 14-1/2° E - 30.6'
 2) 9" OAK WITH HEALED FACE
 AND TAG DATED 8/93
 S 28° W - 61.0'
 3) 12" OAK WITH HEALED FACE
 S 8-1/2° W - 54.9' TO NAIL SIDE CENTER

(141172)
 EAST 1/16 CORNER SECTIONS 16/9
 FOUND 2.5" BRASS CAP
 STAMPED BLM 1980
 BT REFERENCES:
 1) 17.5" FIR WITH HEALED FACE
 AND TAG DATED 6/80
 S 80-1/4° W - 14.2'

(141175)
 NORTH 1/4 CORNER SECTION 16
 FOUND 2.5" BRASS CAP
 STAMPED COUNTY SURVEYORS
 OFFICE DATED 1958
 BT REFERENCES:
 1) 30" FIR STUMP 6' TALL WITH HEALED FACE
 AND TAG DATED 10/58
 S 35° E - 21.6'
 2) 15" FIR WITH VISIBLE SCRIBE
 AND TAG DATED 10/30/06
 S 30° E - 15.5'
 3) 10" FIR WITH VISIBLE SCRIBE
 AND TAG DATED 10/30/06
 S 81° W - 25.2'

(141170)
 E-E 1/64 CORNER SECTIONS 16/9
 FOUND 5/8" IRON ROAD WITH
 YELLOW PLASTIC CAP LANG SURVEYING
 BT REFERENCES:
 1) 23" FIR WITH HEALED FACE
 AND TAG DATED 12/96
 N 43° 25' E - 5.5'
 2) 11" FIR WITH HEALED FACE
 AND TAG DATED 12/96
 S 38° 39' W - 43.7'

SURVEYOR'S CERTIFICATE
 I, JAMES M. KLEIN BEING DULY SWORN AS A PROFESSIONAL LAND SURVEYOR IN THE STATE OF OREGON DO HEREBY CERTIFY THAT THIS MAP CORRECTLY REPRESENTS A SURVEY CONDUCTED UNDER MY DIRECT SUPERVISION IN CONFORMANCE WITH THE REQUIREMENTS OF THE SURVEY RECORDING LAW AS ESTABLISHED BY ORS CHAPTER 209, AND HAVE SET THE PROPER MONUMENTS AS REFERENCED IN THE LEGEND BY MY REGISTRATION NUMBER AND SEAL.



FURTHERMORE, I APPROVE THE LOCATION OF THE MONUMENTS AS DEPICTED ON THIS SURVEY DRAWING TO BE IN THEIR PROPER LOCATION.

SURVEYOR'S CERTIFICATE
 I, MICHAEL W. ERICKSON BEING DULY SWORN AS A PROFESSIONAL LAND SURVEYOR IN THE STATE OF OREGON DO HEREBY CERTIFY THAT THIS MAP CORRECTLY REPRESENTS A SURVEY CONDUCTED UNDER MY DIRECT SUPERVISION IN CONFORMANCE WITH THE REQUIREMENTS OF THE SURVEY RECORDING LAW, AS ESTABLISHED BY ORS CHAPTER 209, AND HAVE SET THE PROPER MONUMENTS AS REFERENCED IN THE LEGEND BY MY REGISTRATION NUMBER AND SEAL.



FURTHERMORE, I APPROVE THE LOCATION OF THE MONUMENTS AS DEPICTED ON THIS SURVEY DRAWING TO BE IN THEIR PROPER LOCATION.

SURVEY PERFORMED FOR:
 WILLIAMS
 DATE OF MONUMENTATION: AUGUST 7, 2014
 PROJECT: 14-02-05 DRAFT: GD, LS
 FILE: RS-295-ROBE.DWG

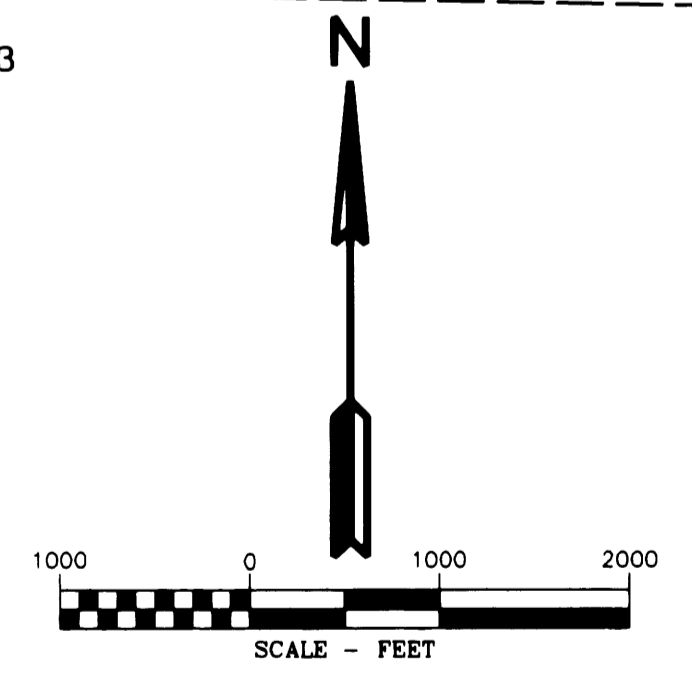
SHEET INDEX:
 SHEET 1 = COVER PAGE TOWNSHIP OVERVIEW
 SHEET 2 = SECTION 15 AND 17
 SHEET 3 = SECTION 10
 SHEET 4 = SECTION 11

NARRATIVE
 THE PURPOSE OF THIS SURVEY IS TO MONUMENT THE TEMPORARY CONSTRUCTION CORRIDOR FOR THE WILLIAMS PACIFIC CONNECTOR GAS LINE. THIS SURVEY IS LOCATED IN TOWNSHIP 29 SOUTH, RANGE 8 WEST, OF THE WILLAMETTE MERIDIAN.

THE PUBLIC LAND SURVEY SYSTEM MONUMENTS WERE FOUND AND TIED BY KLEIN & ASSOCIATES.
 THE TEMPORARY CONSTRUCTION EASEMENT WAS SURVEYED AND MONUMENTED BY THE DYER PARTNERSHIP.
 THE INTERSECTION OF THE TEMPORARY CONSTRUCTION EASEMENT AND THE FEDERAL LANDS WERE MONUMENTED BY KLEIN & ASSOCIATES.

SCALE FACTOR NOTE
 THE DISTANCES SHOWN ON THIS SURVEY ARE GRID DISTANCES.
 THE COMBINED SCALE FACTOR = 0.999821141
 TO CONVERT FROM GRID TO GROUND MULTIPLY THE DISTANCE BY 1.000178891.
 EXAMPLE: 300.00' GRID DISTANCE
 300.00' x 1.000178891 = 300.05' GROUND DISTANCE

- LEGEND**
- SET 5/8" X 24" REBAR WITH 1 1/4" YELLOW PLASTIC CAP (KLEIN & ASSOC. LS 59002)
 - ⊗ SET 5/8" X 24" REBAR WITH 1 1/4" YELLOW PLASTIC CAP (DYER PARTNER LS 2340)
 - FOUND MONUMENT AS NOTED (SEE CORNER NOTES)
 - COMPUTED POINT, NOT MONUMENTED
 - ⌵ FOUND QUARTER CORNER SEE CORNER NOTES
 - ✱ FOUND SECTION CORNER SEE CORNER NOTES
 - ⊠ COMPUTED QUARTER CORNER
 - ⊞ COMPUTED SECTION CORNER
 - POINT NUMBER
 - PROPOSED ALIGNMENT
 - - - TEMPORARY CONSTRUCTION EASEMENT
 - - - - - TEMPORARY WORK AREA



BASIS OF BEARINGS
 OREGON STATE PLANE COORDINATE
 SYSTEM NAD 1983 (CONUS)
 OREGON SOUTH ZONE 3602
 US SURVEY FOOT
 GRID NORTH

THE DYER PARTNERSHIP ENGINEERS & PLANNERS, INC.
 1330 Teakwood Avenue / Coos Bay, Oregon 97420
 (541) 269-0732 / WWW.DYERPART.COM

Klein & Associates, Inc.
 ENGINEERING • SURVEYING • PLANNING
 1411 13th Street - Hood River, OR 97031
 TEL: 541-386-3322 • FAX: 541-386-2615

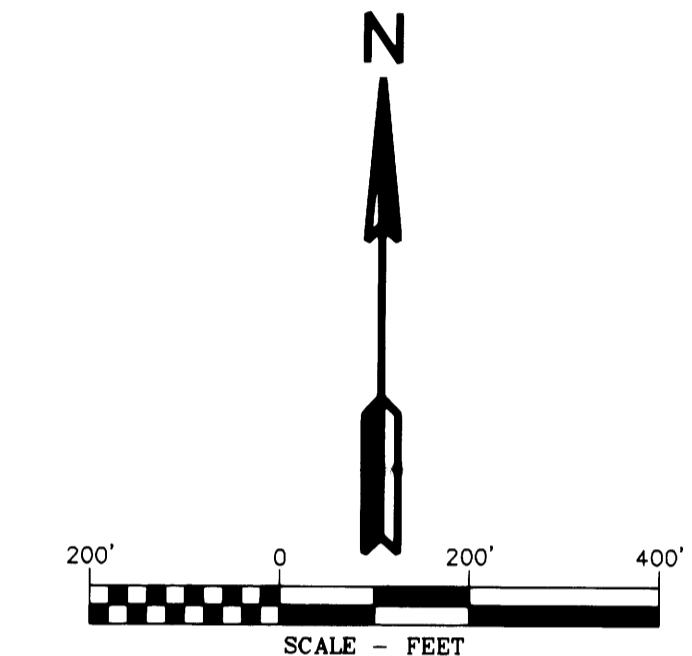
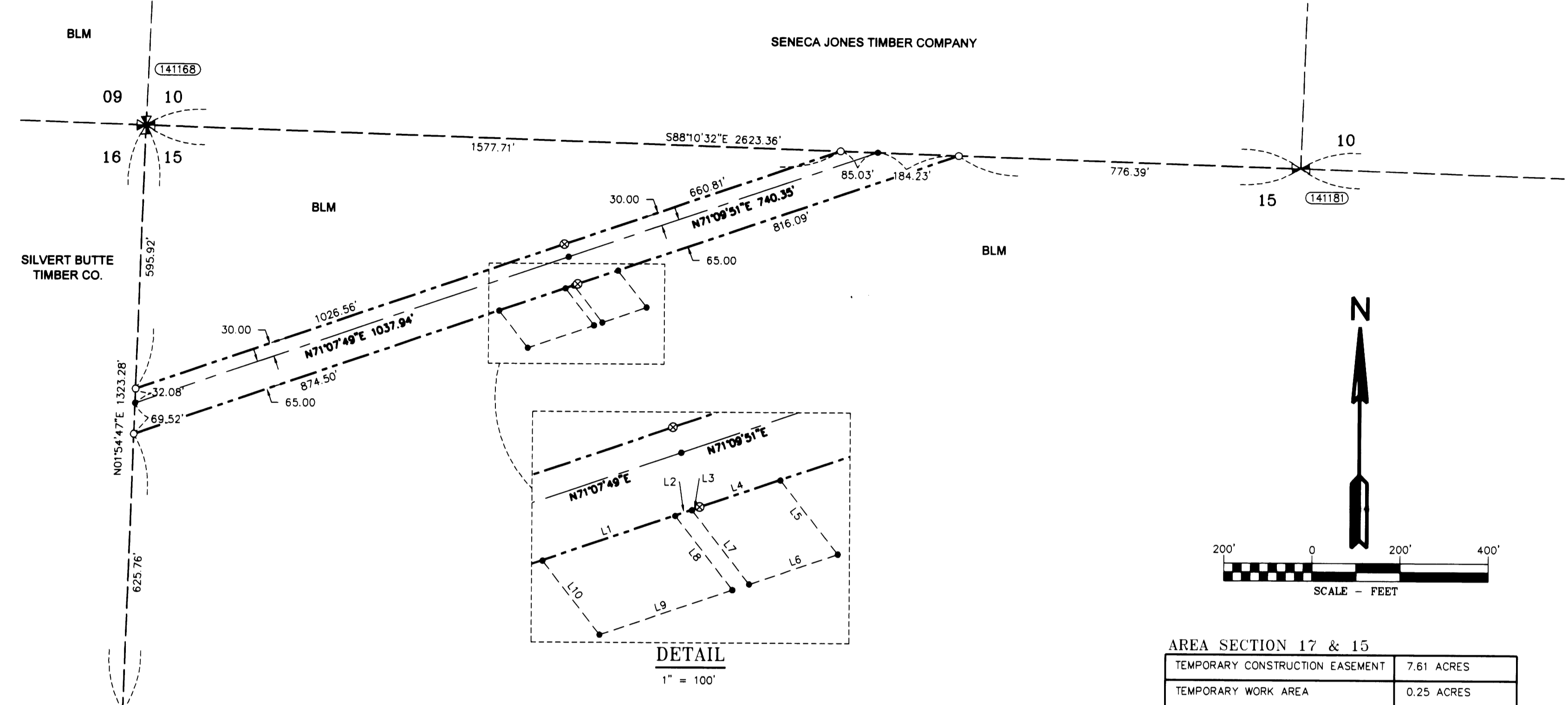
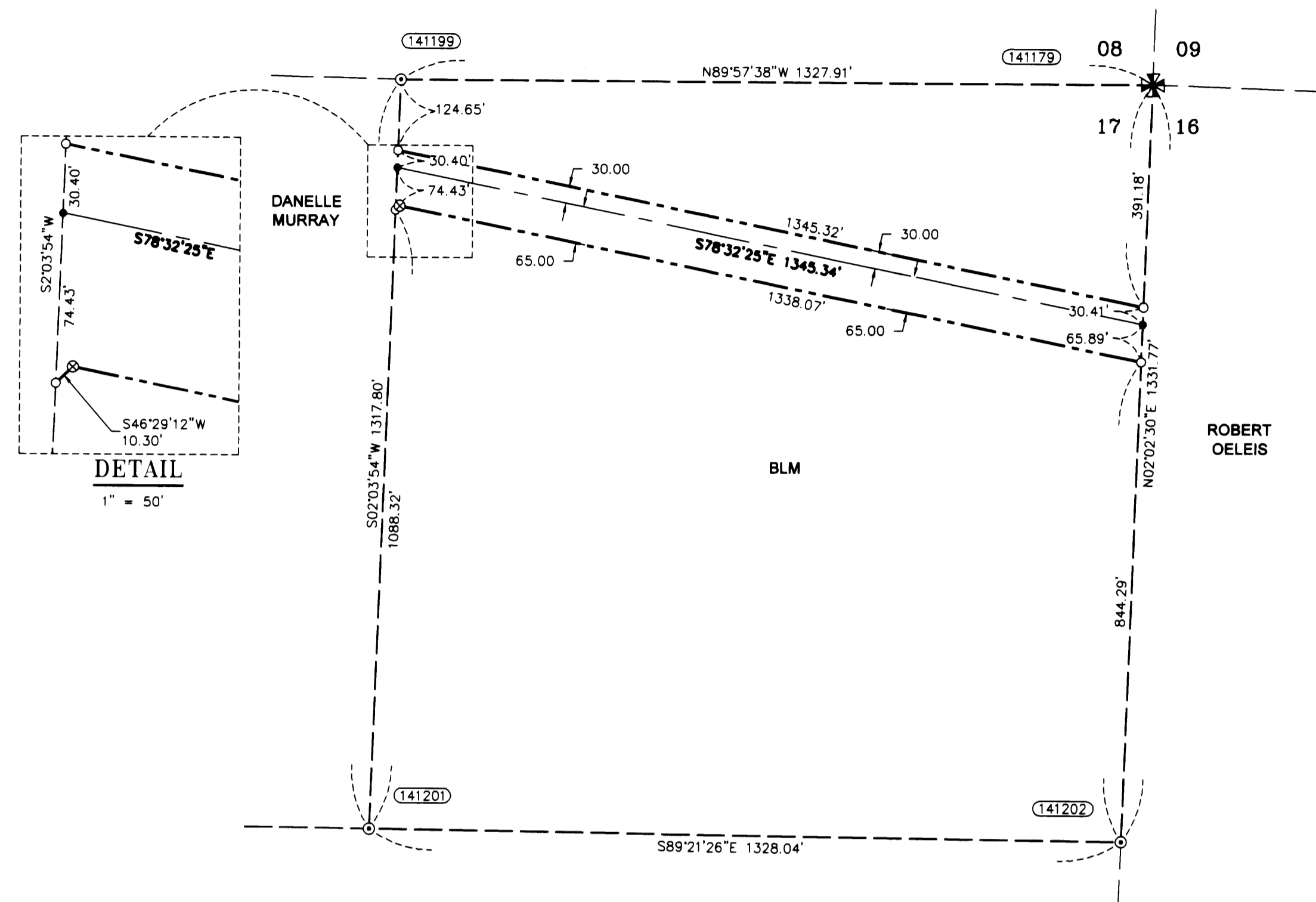
PACIFIC CONNECTOR GAS PIPELINE PROJECT PACIFIC CONNECTOR GAS PIPELINE, LP			
RECORD OF SURVEY TOWNSHIP 29 SOUTH, RANGE 8 WEST, W.M. DOUGLAS COUNTY, OREGON			
DRAWN BY: GJD	DATE: 11-11-2014	ISSUED FOR BID:	SCALE: 1" = 1000'
CHECKED BY:	DATE:	ISSUED FOR CONSTRUCTION:	
APPROVED BY:	DATE:	DRAWING NUMBER:	SHEET 1 OF 4

RECORD OF SURVEY

LOCATED IN
THE NE 1/4 OF SECTION 17
AND
THE NW 1/4 OF SECTION 15
TOWNSHIP 29 SOUTH, RANGE 8 WEST, W.M.
DOUGLAS COUNTY, OREGON
REVISED BY M166-41 B

FILED
Date: 11/11/2014 By: J.C.
This survey consists of:
Map: M166-24 A-D
North arrow: REVISED BY M166-41A-D
Corner Rpt:

DOUGLAS COUNTY
SURVEYOR



AREA SECTION 17 & 15	
TEMPORARY CONSTRUCTION EASEMENT	7.61 ACRES
TEMPORARY WORK AREA	0.25 ACRES

CORNER NOTES:

- (141179) NE CORNER SECTION 17
FOUND 2.5" BRASS CAP
STAMPED COUNTY SURVEYOR OFFICE 1958
RESET 2009.
BT REFERENCES:
1) 27" CEDAR WITH HEALED FACE
AND TAG DATED 11/95
N 49° E - 47.5'
2) 17" FIR WITH HEALED FACE
AND TAG DATED 11/95
S 57° E - 35.0'
3) 22" FIR WITH HEALED FACE
AND TAG DATED 11/95
S 68-1/4° W - 46.9'
4) 23" CEDAR WITH HEALED FACE
AND TAG DATED 11/95
N 11-1/4° W - 60.1'
- (141179) EAST 1/16 CORNER SECTIONS 17/18
FOUND 2" ALUMINUM CAP
STAMPED LS 2354 DATED 1995 R.R.CO
ALSO FOUND 3.25" BLM
BRASS CAP RM-29.2 TO CORNER
BT REFERENCES:
1) 18" FIR SNAG 40' TALL WITH HEALED FACE
AND TAG DATED 11/95
N 48-1/4° E - 37.0'
2) 20" FIR WITH HEALED FACE
AND TAG DATED 11/95
S 75-3/4° E - 33.7'
3) 20" FIR WITH HEALED FACE
AND TAG DATED 11/95
S 47° E - 40.3'
4) 18" FIR WITH HEALED FACE
N 3-1/2° W - 35.6'
- (141201) NE 1/16 CORNER SECTION 17
FOUND 3.25" BRASS CAP
STAMPED BLM 1995
BT REFERENCES:
1) 19.5" OAK WITH HEALED FACE
AND TAG DATED 11/95
N 43-3/4° E - 62.7'
2) 19" FIR WITH HEALED FACE
AND TAG DATED 11/95
N 0-1/4° W - 15.8'
- (14202) NORTH 1/16 CORNER SECTIONS 17/16
FOUND 3.25" BRASS CAP
STAMPED BLM 1995
BT REFERENCES:
1) 8" OAK WITH HEALED FACE
S 16° E
DISTANCE NOT MEASURED (PRIVATE PROPERTY)
2) 23" FIR WITH HEALED FACE
AND TAG DATED 11/95
N 59-1/2° W - 16.8'

CORNER NOTES:

- (141184) NW CORNER SECTION 15
FOUND 2.5" BRASS CAP
STAMPED COUNTY SURVEYOR OFFICE 1958
BT REFERENCES:
1) 48" FIR STUMP
AND TAG DATED 3/1/78
N 10° E - 24.5'
2) 23.5" FIR WITH HEALED FACE
TAG DATED 3/1/78
S 13° E - 34.0'
3) 16" FIR WITH HEALED FACE
AND TAG DATED 3/1/78
S 59° W - 41.0'
4) 19" FIR WITH HEALED FACE
N 71° W - 15.4'
- (141184) NORTH 1/16 CORNER SECTIONS 15/16
FOUND 3.25" BRASS CAP
STAMPED BLM 1982
BT REFERENCES:
1) 16" FIR WITH HEALED FACE
AND TAG DATED 7/82
N 78° E - 10.9'
2) 19" FIR WITH HEALED FACE
AND TAG DATED 7/82
N 77-1/2° W - 18.8'
- (141189) WEST 1/4 CORNER SECTION 15
FOUND 3.25" BRASS CAP
STAMPED BLM 1982
BT REFERENCES:
1) 18.5" FIR WITH HEALED FACE
AND TAG DATED 7/82
S 85° E - 13.2'
2) 19" FIR WITH HEALED FACE
AND TAG DATED 7/82
N 24-1/2° W - 19.8'
- (141184) NORTH 1/4 CORNER SECTION 15
FOUND 3.25" BRASS CAP
STAMPED BLM 1980
BT REFERENCES:
1) 15" FIR SNAG 12' TALL WITH HEALED FACE
AND TAG DATED 7/80
S 0-1/2° W - 6.9'
2) 22" FIR WITH HEALED FACE
TAG DATED 7/80
N 50° W - 24.4'
3) SET NEW BT
21.5" CHINQUAPIN WITH BLAZED FACE
AND SET TAG DATED 4/12/14
S 40° E - 13.2' TO NAIL SIDE CENTER

LEGEND

- SET 5/8" X 24" REBAR WITH 1 1/4" YELLOW PLASTIC CAP (KLEIN & ASSOC. LS 59002)
- ⊗ SET 5/8" X 24" REBAR WITH 1 1/4" YELLOW PLASTIC CAP (DYER PARTNER LS 2340)
- ⊙ FOUND MONUMENT AS NOTED (SEE CORNER NOTES)
- COMPUTED POINT, NOT MONUMENTED
- ⊠ FOUND QUARTER CORNER
SEE CORNER NOTES
- ⊠ FOUND SECTION CORNER
SEE CORNER NOTES
- ⊠ COMPUTED QUARTER CORNER
- ⊠ COMPUTED SECTION CORNER
- ⑩ POINT NUMBER
- PROPOSED ALIGNMENT
- - - TEMPORARY CONSTRUCTION EASEMENT
- - - TEMPORARY WORK AREA

LINE TABLE

Line #	Direction	Length
L1	N71°07'49"E	158.80
L2	N71°07'49"E	20.01
L3	N71°07'49"E	9.45
L4	N71°09'51"E	96.43
L5	N38°01'58"W	106.49
L6	N71°08'45"E	105.88
L7	S38°01'58"E	106.52
L8	N38°01'58"W	106.52
L9	N71°08'40"E	158.81
L10	S38°01'56"E	106.48

REGISTERED PROFESSIONAL LAND SURVEYOR
Michael W. Erickson
OREGON
JULY 26, 1988
MICHAEL W. ERICKSON
2340
Expires 12-31-2015

REGISTERED PROFESSIONAL LAND SURVEYOR
James M. Klein
OREGON
JULY 12, 2009
JAMES M. KLEIN
59002
Expires 6-30-2015

THE DYER PARTNERSHIP ENGINEERS & PLANNERS, INC.
1330 Teakwood Avenue / Coos Bay, Oregon 97420
(541) 269-0732 / WWW.DYERPART.COM

Klein & Associates, Inc.
ENGINEERING • SURVEYING • PLANNING
1411 13th Street • Hood River, OR 97031
TEL: 541-386-3322 • FAX: 541-386-2515

PACIFIC CONNECTOR GAS PIPELINE PROJECT
PACIFIC CONNECTOR GAS PIPELINE, LP
SECTION 15 & 17
RECORD OF SURVEY
TOWNSHIP 29 SOUTH, RANGE 8 WEST, W.M.
DOUGLAS COUNTY, OREGON

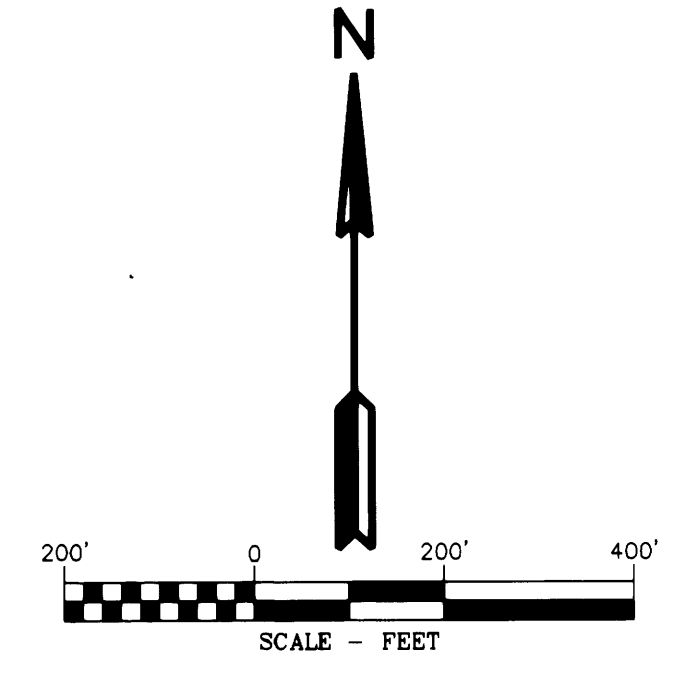
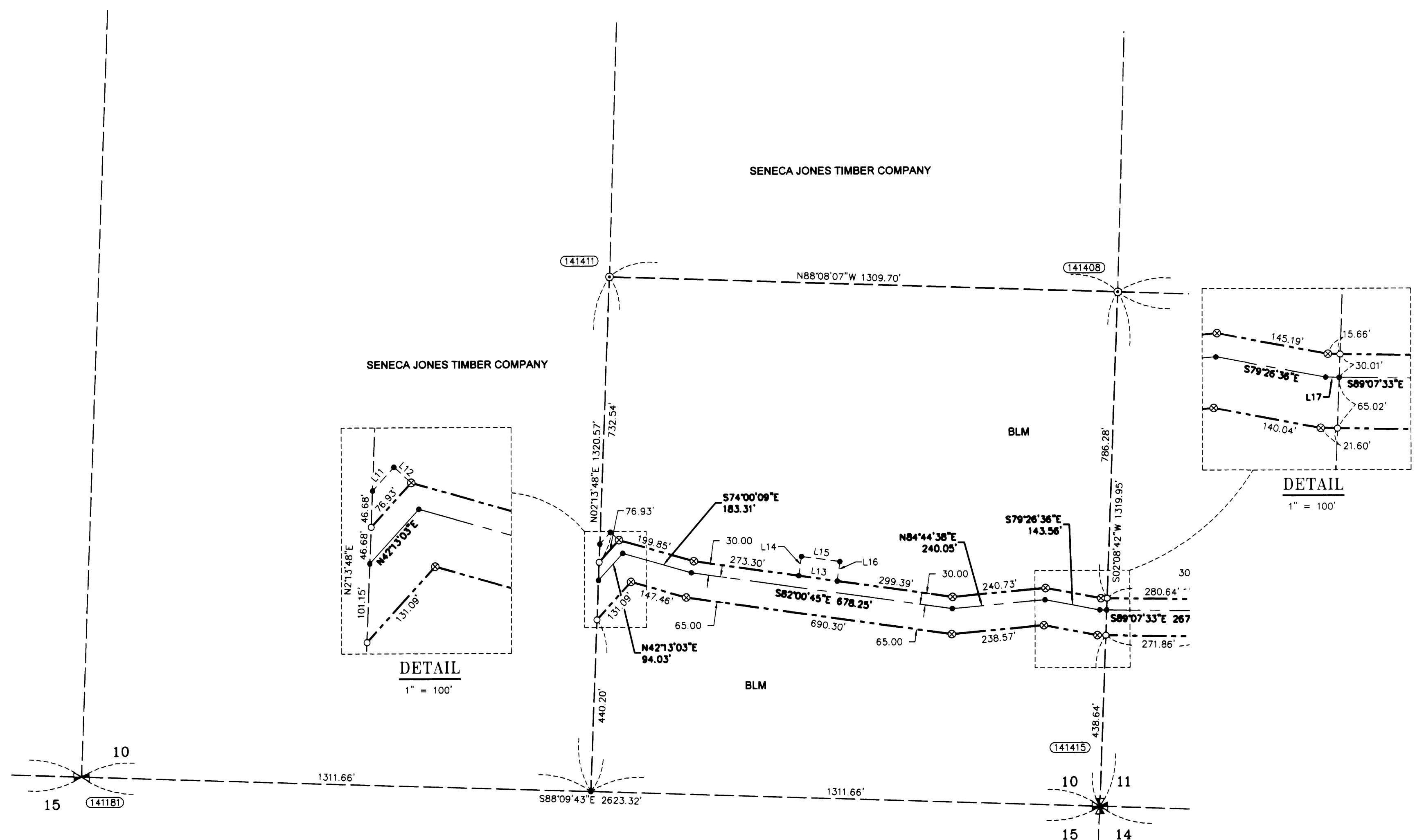
Pacific Connector
GAS PIPELINE

DRAWN BY: GJD	DATE: 11-11-2014	ISSUED FOR BID:	SCALE: 1" = 200'
CHECKED BY:	DATE:	DRAWING NUMBER:	SHEET 2 OF 4
APPROVED BY:	DATE:	DRAWING NUMBER:	

RECORD OF SURVEY

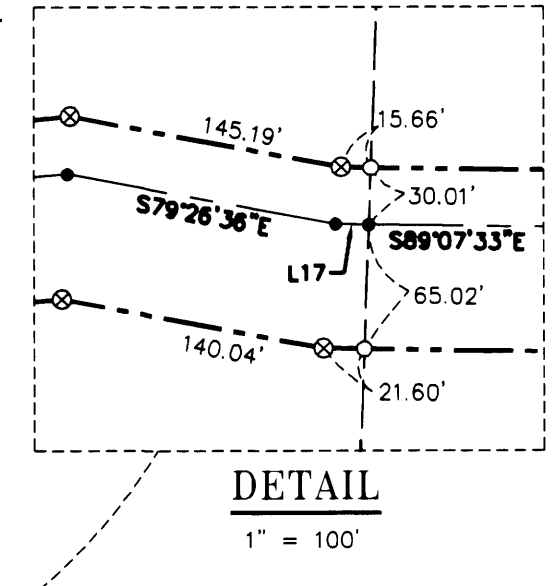
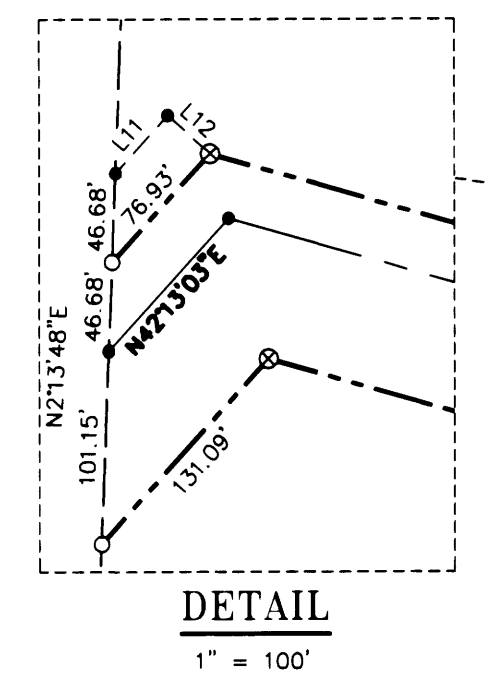
LOCATED IN
 THE SE 1/4 OF SECTION 10
 TOWNSHIP 29 SOUTH, RANGE 8 WEST, W.M.
 DOUGLAS COUNTY, OREGON
 REVISED BY M166-41 C

FILED
 Date: 12/11/2014 By: J.C.
 This survey consists of:
 Map: M166-24 A-D
 Narrative: REVISED BY M166-41 A-D
 Corner Rpt: _____
 DOUGLAS COUNTY
 SURVEYOR



AREA SECTION 10

TEMPORARY CONSTRUCTION EASEMENT	2.97 AC.
TEMPORARY WORK AREA	0.15 AC.



LINE TABLE

Line #	Direction	Length
L11	N42°13'03\"/>	
L12	S47°56'28\"/>	
L13	S82°00'44\"/>	
L14	N7°54'14\"/>	
L15	S82°05'46\"/>	
L16	S7°54'14\"/>	
L17	S89°07'33\"/>	

LEGEND

- SET 5/8" X 24" REBAR WITH 1 1/4" YELLOW PLASTIC CAP (KLEIN & ASSOC. LS 59002)
- ⊗ SET 5/8" X 24" REBAR WITH 1 1/4" YELLOW PLASTIC CAP (DYER PARTNER LS 2340)
- FOUND MONUMENT AS NOTED (SEE CORNER NOTES)
- ⊙ COMPUTED POINT, NOT MONUMENTED
- ⊗ FOUND QUARTER CORNER SEE CORNER NOTES
- ⊗ FOUND SECTION CORNER SEE CORNER NOTES
- ⊗ COMPUTED QUARTER CORNER
- ⊗ COMPUTED SECTION CORNER
- POINT NUMBER
- PROPOSED ALIGNMENT
- - - TEMPORARY CONSTRUCTION EASEMENT
- - - - TEMPORARY WORK AREA

CORNER NOTES:

- (14118) SOUTH 1/4 CORNER SECTION 10 FOUND 3.25" BRASS CAP STAMPED BLM 1980 BT REFERENCES:
 1) 15" FIR SNAG 12" TALL WITH HEALED FACE AND TAG DATED 7/80 S 0-1/2" W - 6.9'
 2) 22" FIR WITH HEALED FACE TAG DATED 7/80 N 50' W - 24.4'
 3) SET NEW BT 21.5" CHINQUAPIN WITH BLAZED FACE AND SET TAG DATED 4/12/14 S 40° E - 13.2' TO NAIL SIDE CENTER
- (14141) SE 1/16 CORNER SECTION 10 FOUND 3.25" BRASS CAP STAMPED BLM 1980 BT REFERENCES:
 1) 23" FIR WITH HEALED FACE AND TAG DATED 7/80 N 37' W - 31.7'
- (141415) SE CORNER SECTION 10 FOUND 2.5" BRASS CAP STAMPED COUNTY SURVEYORS OFFICE DATED 1968 BT REFERENCES:
 1) 19" FIR WITH HEALED FACE AND TAG DATED 2/08 N 28° E - 44.9'
 2) 16" FIR STUMP 10' TALL HEALED FACE AND TAG DATED 2/08 S 85° E - 33.3'
 3) 23" FIR WITH HEALED FACE AND TAG DATED 5/80 S 25' W - 25.7'
 4) 25" CEDAR WITH HEALED FACE AND TAG DATED 5/80 N 36-1/2' W - 13.3'

REGISTERED PROFESSIONAL LAND SURVEYOR
 MICHAEL W. ERICKSON
 2340
 Expires 12-31-2015

REGISTERED PROFESSIONAL LAND SURVEYOR
 JAMES M. KLEIN
 59002
 Expires 6-30-2015

D THE DYER PARTNERSHIP ENGINEERS & PLANNERS, INC.
 1330 Teakwood Avenue / Coos Bay, Oregon 97420
 (541) 269-0732 / WWW.DYERPART.COM

KA Klein & Associates, Inc.
 ENGINEERING • SURVEYING • PLANNING
 1411 13th Street - Hood River, OR 97031
 TEL: 541-386-3322 • FAX: 541-386-2515

PACIFIC CONNECTOR GAS PIPELINE PROJECT
 PACIFIC CONNECTOR GAS PIPELINE, LP
 SECTION 10
 RECORD OF SURVEY
 TOWNSHIP 29 SOUTH, RANGE 8 WEST, W.M.
 DOUGLAS COUNTY, OREGON

Pacific Connector
 GAS PIPELINE

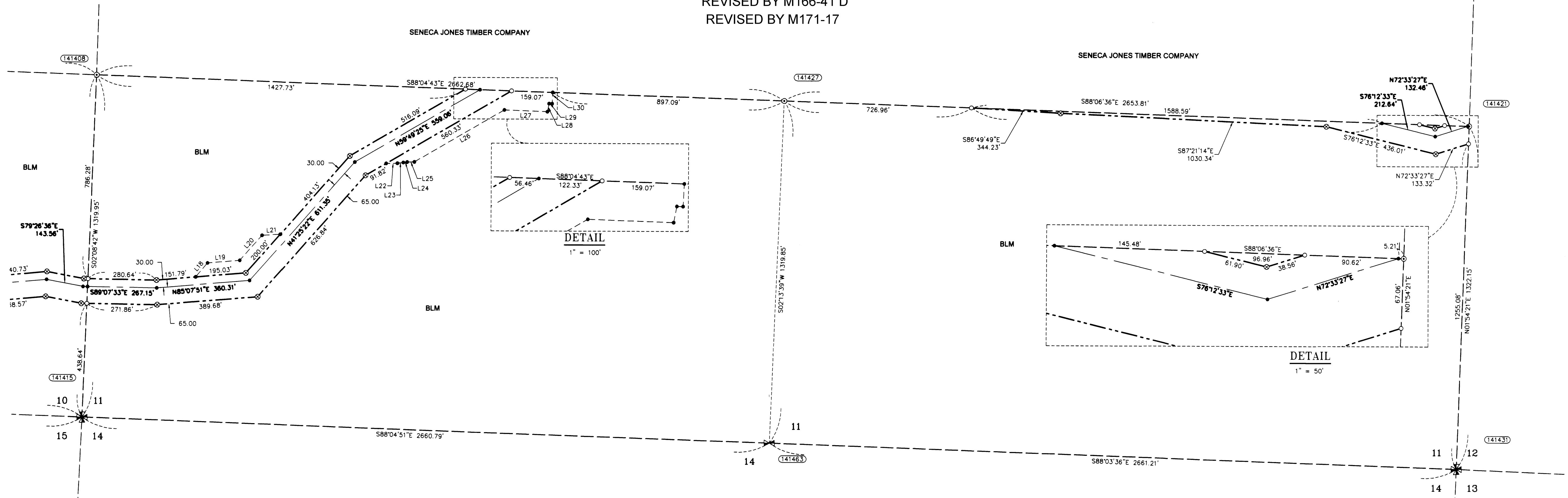
DRAWN BY: GJD	DATE: 11-11-2014	ISSUED FOR BID:	SCALE: 1" = 200'
CHECKED BY:	DATE:	ISSUED FOR CONSTRUCTION:	
APPROVED BY:	DATE:	DRAWING NUMBER:	SHEET 3 OF 4

RECORD OF SURVEY

LOCATED IN THE
 SW 1/4 AND THE SE 1/4 OF SECTION 11
 TOWNSHIP 29 SOUTH, RANGE 8 WEST, W.M.
 DOUGLAS COUNTY, OREGON

REVISED BY M166-41 D
 REVISED BY M171-17

FILED
 Date: 12/14/2014 By: J.C.
 This survey consists of
 Map: M166-41 D
 Narrative: REVISED BY M166-41 D
 Corner Rpt: REVISED BY M171-17
 DOUGLAS COUNTY
 SURVEYOR



(141408) SOUTH 1/16 CORNER SECTIONS 10/11
 FOUND 3.25" BRASS CAP
 STAMPED BLM 1980
 BT REFERENCES:
 1) 19" FIR WITH HEALED FACE
 AND TAG DATED 6/80
 N 70-1/4° E - 46.2'

(141415) SW CORNER SECTION 11
 FOUND 2.5" BRASS CAP
 STAMPED COUNTY SURVEYORS
 OFFICE DATED 1958
 BT REFERENCES:
 1) 19" FIR WITH HEALED FACE
 AND TAG DATED 2/08
 N 28° E - 44.9'
 2) 16" FIR STUMP 10' TALL HEALED FACE
 AND TAG DATED 2/08
 S 85° E - 33.3'
 3) 23" FIR WITH HEALED FACE
 AND TAG DATED 5/80
 S 25° W - 25.7'
 4) 25" CEDAR WITH HEALED FACE
 AND TAG DATED 5/80
 N 36-1/2° W - 13.3'

(141421) SOUTH 1/16 CORNER SECTIONS 11/12
 FOUND 3.25" BRASS CAP
 STAMPED BLM 1980
 BT REFERENCES:
 1) 19" FIR WITH HEALED FACE
 AND TAG DATED 5/80
 S 20° E - 78.5'
 2) 42" FIR WITH HEALED FACE
 AND TAG DATED 5/80
 S 16° W - 19.1'

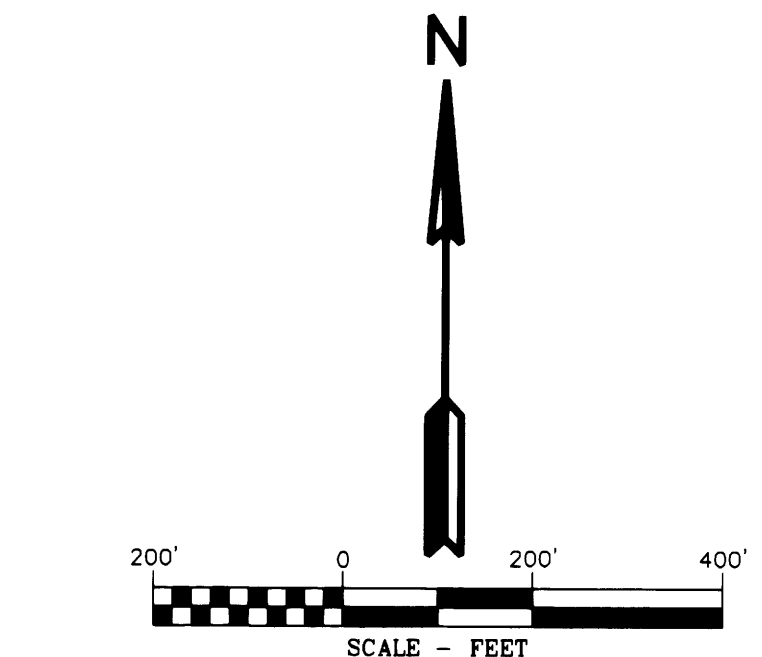
(141422) CS 1/16 CORNER SECTION 11
 FOUND 3.25" BRASS CAP
 STAMPED BLM 1980
 BT REFERENCES:
 1) 6" FIR WITH HEALED FACE
 AND TAG DATED 6/80
 S 0-1/2° E - 25.7'

(141431) SE 1/4 CORNER SECTION 11
 FOUND 2.5" BRASS CAP
 STAMPED U.S. G.O. DATED 1924
 BT REFERENCES:
 1) 43" MADRONE WITH HEALED FACE
 AND TAG DATED 4/7/77
 N 25° E - 48.1'
 2) 26" FIR WITH HEALED FACE
 AND TAG DATED 4/98
 S 81° E - 12.0'
 3) 26" FIR WITH BLAZED FACE
 AND TAG DATED 4/98
 S 66° W - 3'
 4) SET NEW BT
 5" FIR WITH BLAZED FACE
 AND SET TAG DATED 5/10/14
 N 13° W - 13.4' TO NAIL SIDE CENTER
 5) SET NEW BT
 12" FIR WITH BLAZED FACE
 AND SET TAG DATED 5/10/14
 N 40° E - 47.1' TO NAIL SIDE CENTER

(141463) SOUTH 1/4 CORNER SECTION 11
 FOUND 3.25" BRASS CAP
 STAMPED BLM DATED 1980
 BT REFERENCES:
 NOTE - NO BEARING TREES FOUND
 BT'S HAVE FALLEN OVER OR LOGGED.
 1) SET NEW BT
 51" FIR WITH BLAZED FACE
 AND SET TAG DATED 5/14/14
 N 11° W - 30.35' TO NAIL SIDE CENTER
 NO TREES AVAILABLE IN SECTION 14.

LEGEND

- SET 5/8" X 24" REBAR WITH 1 1/4" YELLOW PLASTIC CAP (KLEIN & ASSOC. LS 59002)
- ⊗ SET 5/8" X 24" REBAR WITH 1 1/4" YELLOW PLASTIC CAP (DYER PARTNER LS 2340)
- ⊙ FOUND MONUMENT AS NOTED (SEE CORNER NOTES)
- COMPUTED POINT, NOT MONUMENTED
- ⊠ FOUND QUARTER CORNER SEE CORNER NOTES
- ⊞ FOUND SECTION CORNER SEE CORNER NOTES
- ⊡ COMPUTED QUARTER CORNER
- ⊠ COMPUTED SECTION CORNER
- POINT NUMBER
- PROPOSED ALIGNMENT
- - - - - TEMPORARY CONSTRUCTION EASEMENT
- - - - - TEMPORARY WORK AREA



AREA SECTION 11

TEMPORARY CONSTRUCTION EASEMENT	5.27 AC
TEMPORARY WORK AREA	1.21 AC

LINE TABLE

Line #	Direction	Length
L18	N40°07'51"E	70.71
L19	N85°07'51"E	125.00
L20	N41°25'06"E	129.94
L21	N86°25'06"E	70.71
L22	N88°50'31"E	43.33
L23	N82°52'30"E	22.93
L24	N82°52'30"E	15.37
L25	N88°36'10"E	27.84
L26	N59°54'22"E	402.10
L27	S87°55'13"E	166.29
L28	N10°56'28"E	31.76
L29	S88°35'45"E	12.08
L30	N2°40'59"E	43.60

REGISTERED
 PROFESSIONAL
 LAND SURVEYOR

 OREGON
 JULY 28, 2009
 MICHAEL W. ERICKSON
 2340
 Expires 6-30-2015

REGISTERED
 PROFESSIONAL
 LAND SURVEYOR

 OREGON
 JULY 12, 2009
 JAMES M. KLEIN
 59002
 Expires 6-30-2015

D THE DYER PARTNERSHIP
 ENGINEERS & PLANNERS, INC.
 1330 Teakwood Avenue / Coos Bay, Oregon 97420
 (541) 269-0732 / WWW.DYERPART.COM

KA
 Klein & Associates, Inc.
 ENGINEERING • SURVEYING • PLANNING
 1411 13th Street • Hood River, OR 97031
 TEL: 541-386-3322 • FAX: 541-386-2515

PACIFIC CONNECTOR GAS PIPELINE PROJECT
 PACIFIC CONNECTOR GAS PIPELINE, LP
 SECTION 11
 RECORD OF SURVEY
 TOWNSHIP 29 SOUTH, RANGE 8 WEST, W.M.
 DOUGLAS COUNTY, OREGON

DRAWN BY: GJD	DATE: 11-11-2014	ISSUED FOR BID:	SCALE: 1" = 200'
CHECKED BY:	DATE:	ISSUED FOR CONSTRUCTION:	
APPROVED BY:	DATE:	DRAWING NUMBER:	SHEET 4 OF 4