

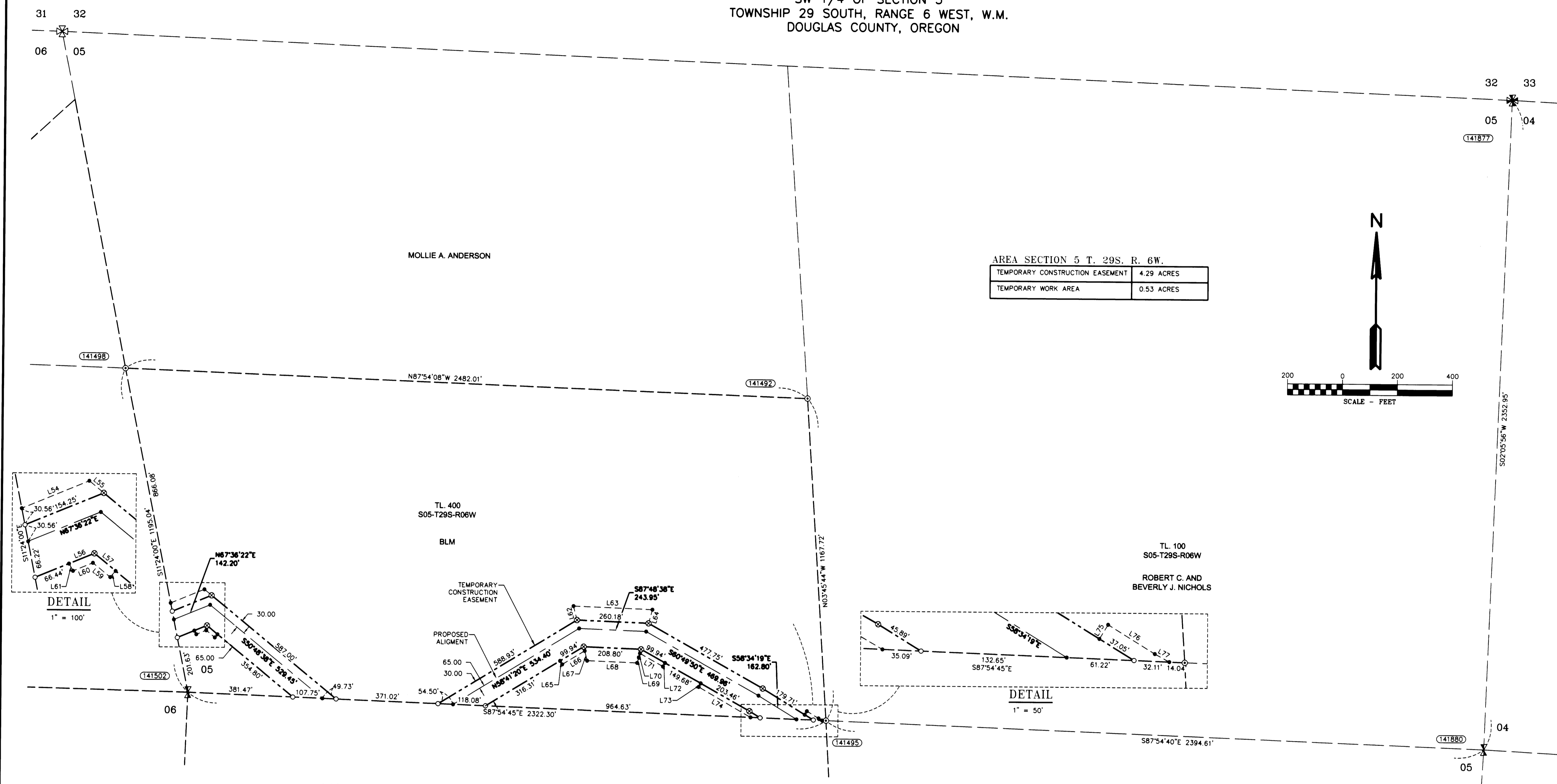
RECORD OF SURVEY

REVISED SEE M166-37-A-C

LOCATED IN THE
 SW 1/4 OF SECTION 5
 TOWNSHIP 29 SOUTH, RANGE 6 WEST, W.M.
 DOUGLAS COUNTY, OREGON

FILED
 Date: 12/14/2014 By: JC
 This survey consists of:
 Map: M166-37-A-C
 Narration: REVISED SEE M166-37-A-C
 Corner Rpt.

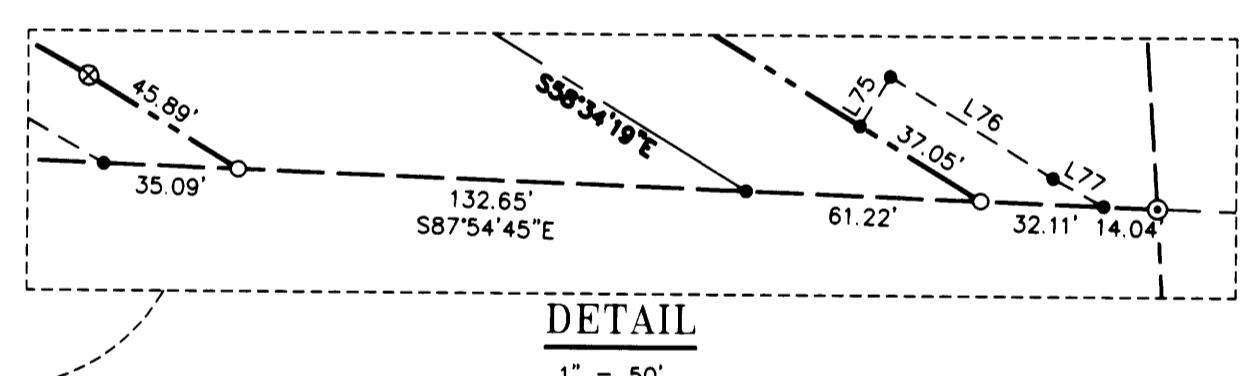
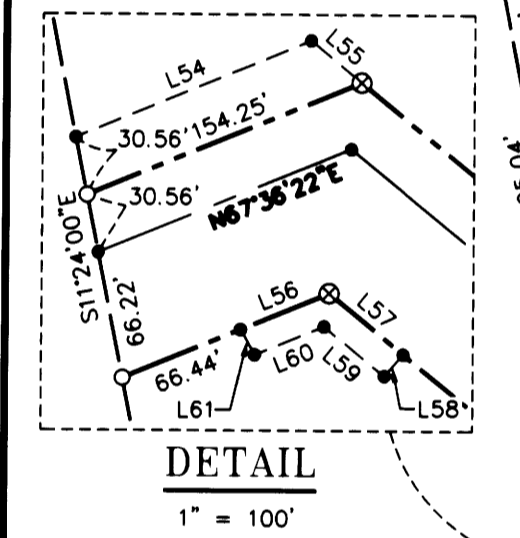
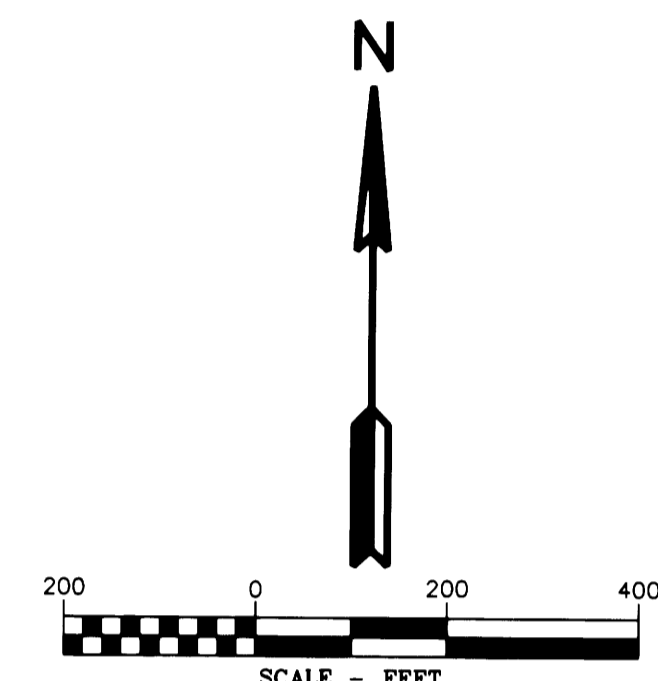
**DOUGLAS COUNTY
 SURVEYOR**



AREA SECTION 5 T. 29S. R. 6W.	
TEMPORARY CONSTRUCTION EASEMENT	4.29 ACRES
TEMPORARY WORK AREA	0.53 ACRES

LINE TABLE

Line #	Direction	Length
L54	N67°36'22"E	132.19
L55	S50°48'38"E	34.11
L56	N67°36'22"E	49.65
L57	S50°48'38"E	49.98
L58	N40°54'49"E	15.01
L59	S50°48'38"E	40.59
L60	N67°36'22"E	38.94
L61	S29°07'37"E	15.10
L62	N14°33'39"W	52.22
L63	S87°48'38"E	287.21
L64	S15°39'56"W	51.42
L65	S31°18'40"E	15.00
L66	N58°41'20"E	95.47
L67	S14°30'25"E	36.56
L68	S87°48'38"E	181.73
L69	N15°42'37"E	20.57
L70	N15°42'37"E	15.43
L71	S60°46'08"E	96.34
L72	N29°13'52"E	15.11
L73	S29°10'10"W	15.00
L74	S60°05'56"E	218.09
L75	N31°25'41"E	15.00
L76	S58°34'19"E	50.00
L77	S61°22'18"E	15.07



CORNER NOTES:

- (141877) NE CORNER SECTION 5
 FOUND 2.5" BRASS CAP
 STAMPED COUNTY SURVEYORS
 OFFICE DATED 1961
 BT REFERENCES:
 1) 29° FIR WITH HEALED FACE
 AND TAG DATED 9/17/04
 N 69° E - 8.2'
- (141492) C-N 1/16 CORNER SECTION 5
 FOUND 3.25" BRASS CAP
 STAMPED BLM 1994
 BT REFERENCES:
 1) 17° FIR WITH HEALED FACE
 AND TAG DATED 1994
 S 38° E - 33.7'
 2) 26° FIR WITH HEALED FACE
 AND TAG DATED 1994
 S 72-3/4' W - 19.1'
- (141498) N 1/16 CORNER SECTIONS 5/6
 FOUND 3.25" BRASS CAP
 STAMPED BLM 1994
 BT REFERENCES:
 1) 12° FIR WITH HEALED FACE
 N 55° E - 26.2' TO NAIL SIDE CENTER
 2) 13° FIR WITH HEALED FACE
 AND TAG DATED 10/94
 S 32° W - 26.1'
- (141880) EAST 1/4 CORNER SECTION 5
 FOUND 2.5" BRASS CAP
 STAMPED COUNTY SURVEYORS
 OFFICE DATED 1954
 BT REFERENCES:
 1) 16.5" FIR WITH HEALED FACE
 AND TAG DATED 10/94
 N 32° E - 21.1'
 2) 17" FIR WITH HEALED FACE
 AND TAG DATED 10/94
 S 76° W - 27.7'
- (141495) CENTER 1/4 CORNER SECTION 5
 FOUND 3.25" BRASS CAP
 STAMPED BLM 1994
 BT REFERENCES:
 1) 38" BLACK OAK WITH HEALED FACE
 AND TAG DATED 10/94
 N 72-1/4' E - 45.5'
 2) 24" FIR WITH HEALED FACE
 AND TAG DATED 10/94
 N 71° W - 52.1'
- (141502) WEST 1/4 CORNER SECTION 5
 FOUND 3.25" BRASS CAP
 STAMPED BLM 1994
 BT REFERENCES:
 1) 23° FIR WITH HEALED FACE
 AND TAG DATED 10/21/75
 N 62° E - 62.7'
 2) 32" OAK WITH HEALED FACE
 N 30° W - 47.5'

LEGEND

- SET 5/8" X 24" REBAR WITH 1 1/4" YELLOW PLASTIC CAP (KLEIN & ASSOC. LS 59002)
- ⊙ SET 5/8" X 24" REBAR WITH 1 1/4" YELLOW PLASTIC CAP (DYER PARTNER LS 2340)
- ⊙ FOUND MONUMENT AS NOTED (SEE CORNER NOTES)
- COMPUTED POINT, NOT MONUMENTED
- ⊗ FOUND QUARTER CORNER (SEE CORNER NOTES)
- ⊗ FOUND SECTION CORNER (SEE CORNER NOTES)
- ⊗ COMPUTED QUARTER CORNER
- ⊗ COMPUTED SECTION CORNER
- ⊙ POINT NUMBER
- PROPOSED ALIGNMENT
- - - TEMPORARY CONSTRUCTION EASEMENT
- - - TEMPORARY WORK AREA

REGISTERED PROFESSIONAL LAND SURVEYOR
 MICHAEL W. ERICKSON
 2340
 Expires 12-31-2015

REGISTERED PROFESSIONAL LAND SURVEYOR
 JAMES M. KLEIN
 59002
 Expires 6-30-2015

THE DYER PARTNERSHIP ENGINEERS & PLANNERS, INC.
 1330 Teakwood Avenue / Coos Bay, Oregon 97420
 (541) 269-0732 / WWW.DYERPART.COM

Klein & Associates, Inc.
 ENGINEERING • SURVEYING • PLANNING
 1411 13th Street • Hood River, OR 97031
 TEL: 541-386-3322 • FAX: 541-386-2515

PACIFIC CONNECTOR GAS PIPELINE PROJECT
 PACIFIC CONNECTOR GAS PIPELINE, LP
 SECTION 5
 RECORD OF SURVEY
 TOWNSHIP 29 SOUTH, RANGE 6 WEST, W.M.
 DOUGLAS COUNTY, OREGON

Pacific Connector
 GAS PIPELINE

DRAWN BY: LJS	DATE: 09-23-2014	ISSUED FOR BID:	SCALE: 1" = 200'
CHECKED BY:	DATE:	ISSUED FOR CONSTRUCTION:	
APPROVED BY:	DATE:	DRAWING NUMBER:	SHEET 3 OF 3