

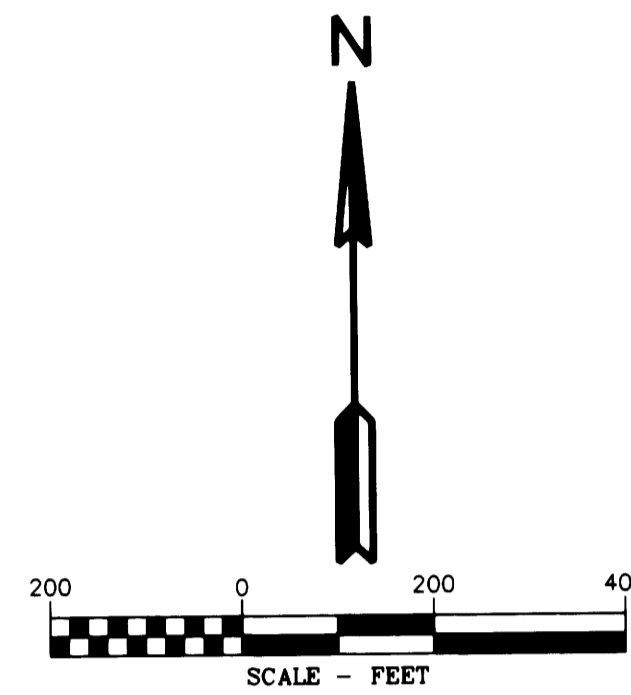
RECORD OF SURVEY REVISED SEE M166-37-A-C

LOCATED IN THE
 SW 1/4 AND THE SE 1/4 OF SECTION 35
 TOWNSHIP 28 SOUTH, RANGE 7 WEST, W.M.
 DOUGLAS COUNTY, OREGON

FILED
 Date: 12/14/2014 By: J.C.
 This survey consists of:
 Map: M166-37-A-C
 Name: REVISED SEE M166-37-A-C
 Corner Rpt:

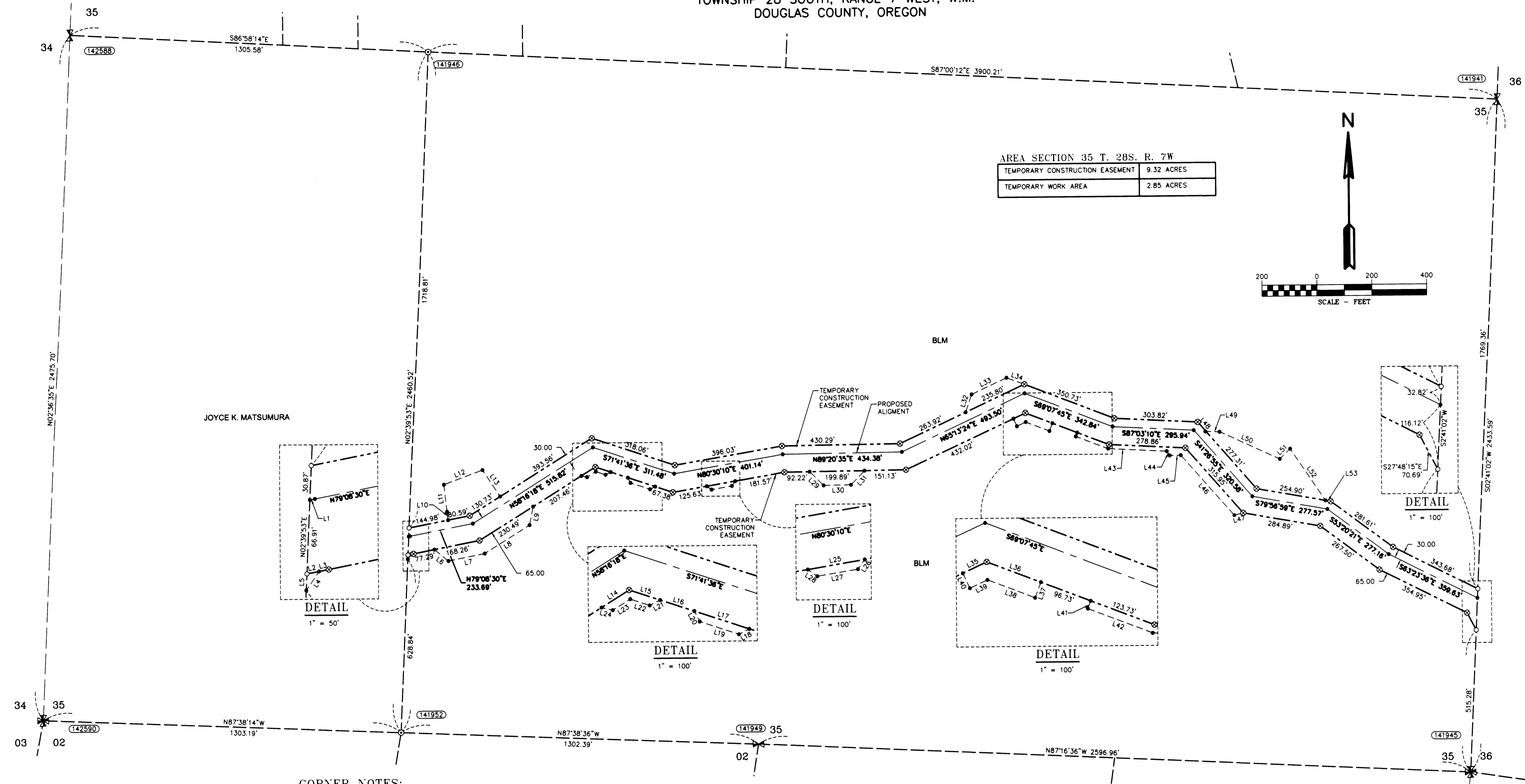
DOUGLAS COUNTY
 SURVEYOR

AREA SECTION 35 T. 28S. R. 7W	
TEMPORARY CONSTRUCTION EASEMENT	9.32 ACRES
TEMPORARY WORK AREA	2.85 ACRES



LINE TABLE

Line #	Direction	Length
L1	S78°56'35"W	4.62
L2	N78°56'35"E	11.08
L3	S78°56'35"W	9.30
L4	N33°56'34"E	20.73
L5	S2°39'53"W	15.09
L6	S51°23'40"E	65.79
L7	N79°08'30"E	134.71
L8	N58°16'17"E	193.04
L9	N11°17'30"E	68.39
L10	S6°23'40"E	30.88
L11	S6°23'40"E	98.05
L12	S69°56'55"W	150.00
L13	N33°42'31"W	114.95
L14	N58°16'18"E	59.50
L15	S71°41'36"E	59.27
L16	S71°41'36"E	65.57
L17	S71°41'36"E	105.02
L18	N63°18'24"E	21.21
L19	S71°41'35"E	75.02
L20	S26°41'35"E	21.21
L21	N63°18'24"E	21.21
L22	S71°41'35"E	37.27
L23	N58°16'17"E	37.50
L24	S76°43'42"E	21.21
L25	N80°30'10"E	105.00
L26	N35°30'10"E	21.21
L27	N80°30'10"E	75.00
L28	S54°29'49"E	21.21
L29	S45°39'24"E	70.71
L30	N89°20'35"E	99.89
L31	N44°20'35"E	70.71
L32	N18°51'13"E	67.73
L33	N65°13'24"E	140.04
L34	S69°46'35"E	69.33
L35	N65°13'24"E	48.01
L36	S69°07'45"E	105.27
L37	N20°52'15"E	30.00
L38	S69°07'45"E	92.65
L39	N65°13'24"E	35.39
L40	S24°46'35"E	30.00
L41	S20°52'15"W	15.00
L42	S69°07'45"E	126.09
L43	S87°03'10"E	213.88
L44	S33°55'38"E	18.75
L45	N88°56'50"E	40.80
L46	S41°26'56"E	292.32
L47	N75°06'54"E	33.54
L48	S41°26'55"E	45.40
L49	N87°57'11"W	49.76
L50	N65°40'08"W	241.10
L51	S45°49'49"W	52.08
L52	N34°16'26"W	226.91
L53	S79°56'59"E	19.28



CORNER NOTES:

- (141941)**
 EAST 1/4 CORNER SECTION 35
 FOUND 2.5" BRASS CAP
 STAMPED COUNTY SURVEYORS
 OFFICE DATED 1969
 BT REFERENCES:
 1) 15.5" MORTLE WITH HEALED FACE
 AND TAG DATED 5/26/69
 N 38-1/2' E - 17.5'
 2) 32.5" FIR WITH HEALED FACE
 AND TAG DATED 7/97
 S 84' W - 22.5'
- (141948)**
 C-W 1/16 CORNER SECTION 35
 FOUND 3.25" BRASS CAP
 STAMPED BLM 1992
 BT REFERENCES:
 1) 15" FIR STUMP 7' TALL WITH HEALED FACE
 N 19-1/4' E - 12.5'
 2) 23" CEDAR WITH HEALED FACE
 AND TAG DATED 7/92
 S 69-1/2' E - 24.1'
- (141949)**
 SOUTH 1/4 CORNER SECTION 35
 FOUND 2.5" BRASS CAP
 STAMPED COUNTY SURVEYORS
 OFFICE DATED 1961
 BT REFERENCES:
 1) 14" FIR FALLEN DEAD FIR WITH HEALED FACE
 AND TAG DATED 6/92
 N 19-3/4' E - 2.6'
 2) 24" FIR SNAG 100' TALL HEALED FACE
 AND TAG DATED 6/92
 S 41' E - 12.5'
 3) SET NEW BT
 10" MADRONE, BLAZED FACE
 AND SET TAG DATED 7/9/14
 N 3' W - 11.65' TO NAIL SIDE CENTER
- (142588)**
 WEST 1/4 CORNER SECTION 35
 FOUND 2.5" BRASS CAP
 STAMPED COUNTY SURVEYORS
 OFFICE DATED 1958
 BT REFERENCES:
 1) 18" OAK WITH HEALED FACE
 N 73-1/4' E - 41.6'
 2) 30.5" WHITE OAK WITH HEALED FACE
 N 81' W - 6.3'
- (142590)**
 SW CORNER SECTION 35
 FOUND 3.25" BRASS CAP
 STAMPED BLM 1981
 REFERENCES:
 NO BEARING TREE REFERENCES WERE FOUND
 A BLM BRASS CAP REFERENCE MONUMENT
 WAS FOUND
 "RM S 35 55.6" TO CO T295 R7W 198-"
 "THE RM WAS FOUND AT 54.61"
 NO OTHER BLM REFERENCE MONUMENTS
 WERE RECOVERED. LAND OWNERS DID NOT
 GIVE PERMISSION TO ACCESS THEIR LANDS.

LEGEND

- SET 5/8" X 24" REBAR WITH 1 1/4" YELLOW PLASTIC CAP (KLEIN & ASSOC. LS 59002)
- ⊙ SET 5/8" X 24" REBAR WITH 1 1/4" YELLOW PLASTIC CAP (DYER PARTNER LS 2340)
- ⊙ FOUND MONUMENT AS NOTED (SEE CORNER NOTES)
- COMPUTED POINT, NOT MONUMENTED
- ⊠ FOUND QUARTER CORNER SEE CORNER NOTES
- ⊠ FOUND SECTION CORNER SEE CORNER NOTES
- ⊠ COMPUTED QUARTER CORNER
- ⊠ COMPUTED SECTION CORNER
- 100000 POINT NUMBER
- PROPOSED ALIGNMENT
- - - - - TEMPORARY CONSTRUCTION EASEMENT
- - - - - TEMPORARY WORK AREA

REGISTERED
 PROFESSIONAL
 LAND SURVEYOR
 MICHAEL W. ERICKSON
 2340
 Expires 12-31-2015

REGISTERED
 PROFESSIONAL
 LAND SURVEYOR
 JAMES M. KLEIN
 59002
 Expires 6-30-2015

**THE DYER PARTNERSHIP
 ENGINEERS & PLANNERS, INC.**
 1330 Teakwood Avenue / Coos Bay, Oregon 97420
 (541) 269-0732 / WWW.DYERPART.COM

Klein & Associates, Inc.
 ENGINEERING • SURVEYING • PLANNING
 1411 13th Street • Hood River, OR 97031
 TEL: 541-386-3322 • FAX: 541-386-2515

PACIFIC CONNECTOR GAS PIPELINE PROJECT
 PACIFIC CONNECTOR GAS PIPELINE, LP
 SECTION 35
 RECORD OF SURVEY
 TOWNSHIP 28 SOUTH, RANGE 7 WEST, W.M.
 DOUGLAS COUNTY, OREGON

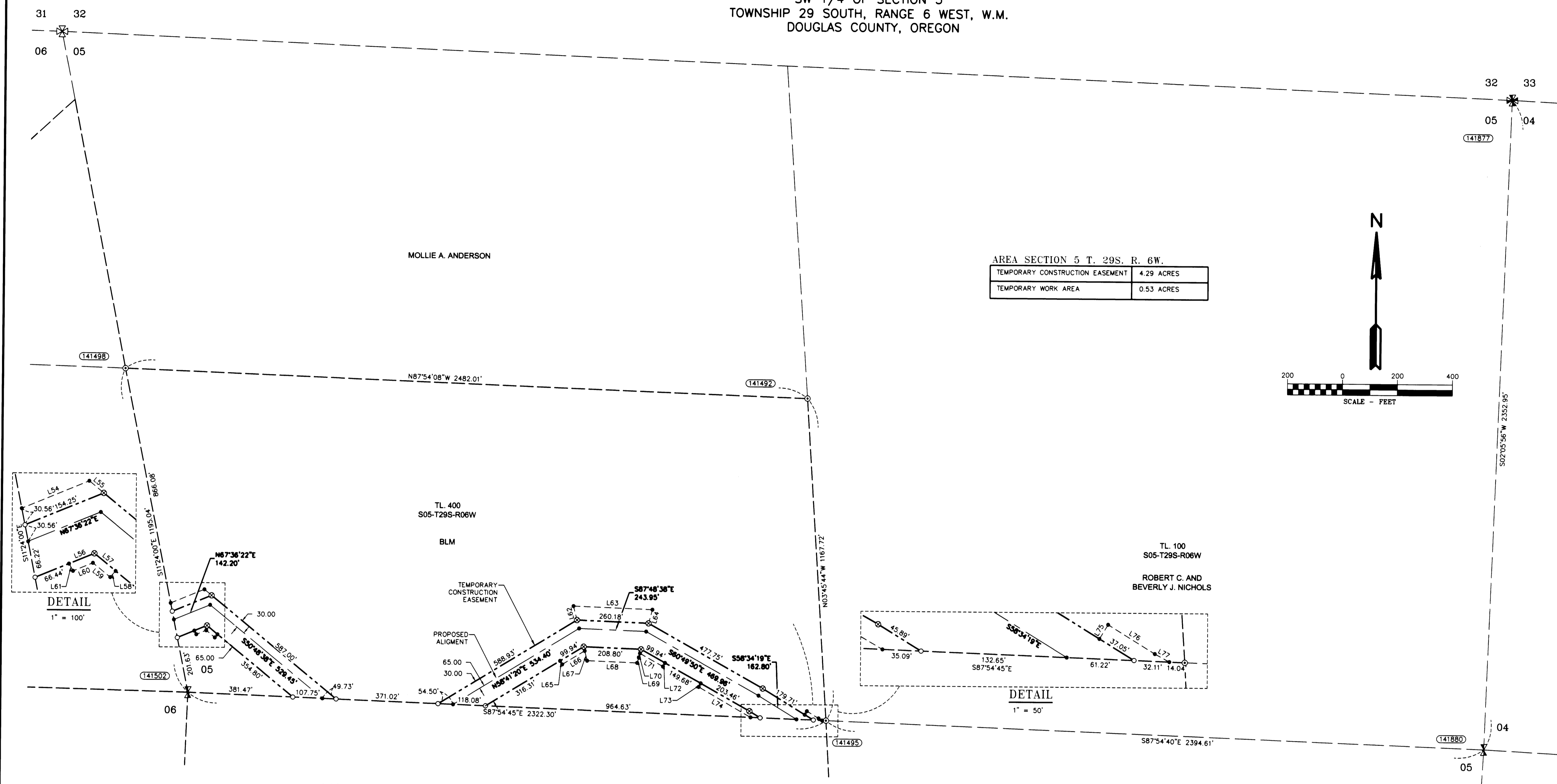
DRAWN BY: LIS DATE: 09-23-2014 ISSUED FOR BID: SCALE: 1" = 200'
 CHECKED BY: DATE: ISSUED FOR CONSTRUCTION:
 APPROVED BY: DATE: DRAWING NUMBER: SHEET 2 OF 3

RECORD OF SURVEY

REVISED SEE M166-37-A-C
 LOCATED IN THE
 SW 1/4 OF SECTION 5
 TOWNSHIP 29 SOUTH, RANGE 6 WEST, W.M.
 DOUGLAS COUNTY, OREGON

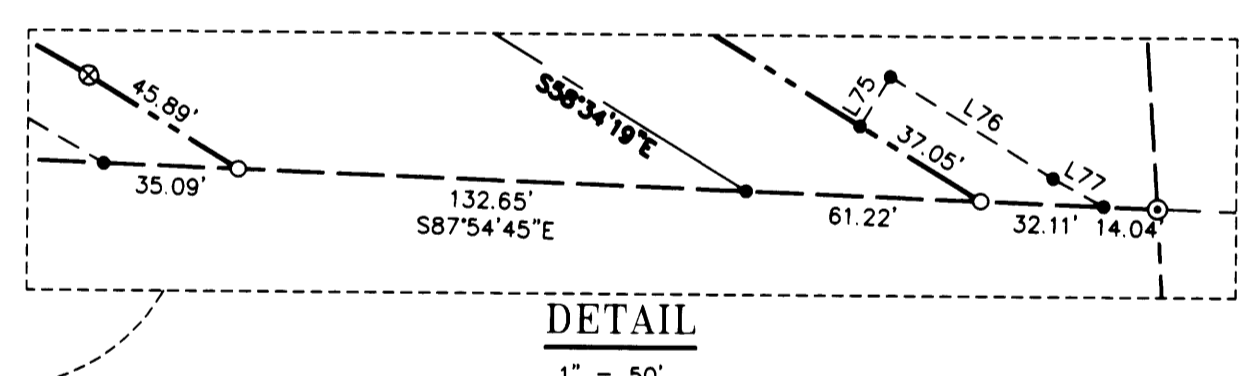
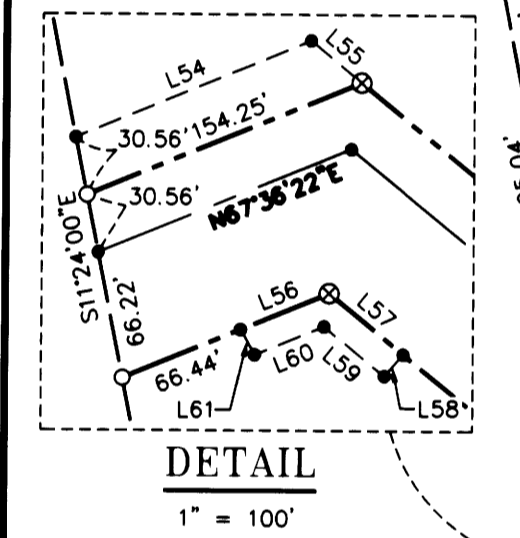
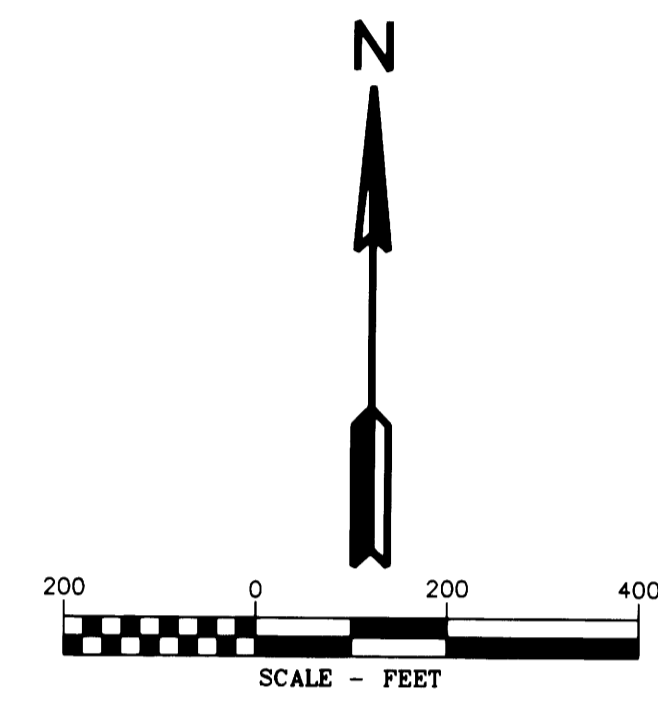
FILED
 Date: 12/14/2014 By: JC
 This survey consists of:
 Map: M166-37-A-C
 Narration: REVISED SEE M166-37-A-C
 Corner Rpt.

DOUGLAS COUNTY
 SURVEYOR



AREA SECTION 5 T. 29S. R. 6W.	
TEMPORARY CONSTRUCTION EASEMENT	4.29 ACRES
TEMPORARY WORK AREA	0.53 ACRES

LINE TABLE		
Line #	Direction	Length
L54	N67°36'22"E	132.19
L55	S50°48'38"E	34.11
L56	N67°36'22"E	49.65
L57	S50°48'38"E	49.98
L58	N40°54'49"E	15.01
L59	S50°48'38"E	40.59
L60	N67°36'22"E	38.94
L61	S29°07'37"E	15.10
L62	N14°33'39"W	52.22
L63	S87°48'38"E	287.21
L64	S15°39'56"W	51.42
L65	S31°18'40"E	15.00
L66	N58°41'20"E	95.47
L67	S14°30'25"E	36.56
L68	S87°48'38"E	181.73
L69	N15°42'37"E	20.57
L70	N15°42'37"E	15.43
L71	S60°46'08"E	96.34
L72	N29°13'52"E	15.11
L73	S29°10'10"W	15.00
L74	S60°05'56"E	218.09
L75	N31°25'41"E	15.00
L76	S58°34'19"E	50.00
L77	S61°22'18"E	15.07



CORNER NOTES:

- (141877) NE CORNER SECTION 5
 FOUND 2.5" BRASS CAP
 STAMPED COUNTY SURVEYORS
 OFFICE DATED 1961
 BT REFERENCES:
 1) 29° FIR WITH HEALED FACE
 AND TAG DATED 9/17/04
 N 69° E - 8.2'
- (141492) C-N 1/16 CORNER SECTION 5
 FOUND 3.25" BRASS CAP
 STAMPED BLM 1994
 BT REFERENCES:
 1) 17° FIR WITH HEALED FACE
 AND TAG DATED 1994
 S 38° E - 33.7'
 2) 26° FIR WITH HEALED FACE
 AND TAG DATED 1994
 S 72-3/4' W - 19.1'
- (141498) N 1/16 CORNER SECTIONS 5/6
 FOUND 3.25" BRASS CAP
 STAMPED BLM 1994
 BT REFERENCES:
 1) 12° FIR WITH HEALED FACE
 N 55° E - 26.2' TO NAIL SIDE CENTER
 2) 13° FIR WITH HEALED FACE
 AND TAG DATED 10/94
 S 32° W - 26.1'
- (141880) EAST 1/4 CORNER SECTION 5
 FOUND 2.5" BRASS CAP
 STAMPED COUNTY SURVEYORS
 OFFICE DATED 1954
 BT REFERENCES:
 1) 16.5" FIR WITH HEALED FACE
 AND TAG DATED 10/94
 N 32° E - 21.1'
 2) 17" FIR WITH HEALED FACE
 AND TAG DATED 10/94
 S 76° W - 27.7'
- (141495) CENTER 1/4 CORNER SECTION 5
 FOUND 3.25" BRASS CAP
 STAMPED BLM 1994
 BT REFERENCES:
 1) 38" BLACK OAK WITH HEALED FACE
 AND TAG DATED 10/94
 N 72-1/4° E - 45.5'
 2) 24" FIR WITH HEALED FACE
 AND TAG DATED 10/94
 N 71° W - 52.1'
- (141502) WEST 1/4 CORNER SECTION 5
 FOUND 3.25" BRASS CAP
 STAMPED BLM 1994
 BT REFERENCES:
 1) 23° FIR WITH HEALED FACE
 AND TAG DATED 10/21/75
 N 62° E - 62.7'
 2) 32" OAK WITH HEALED FACE
 N 30° W - 47.5'

LEGEND

- SET 5/8" X 24" REBAR WITH 1 1/4" YELLOW PLASTIC CAP (KLEIN & ASSOC. LS 59002)
- ⊙ SET 5/8" X 24" REBAR WITH 1 1/4" YELLOW PLASTIC CAP (DYER PARTNER LS 2340)
- ⊙ FOUND MONUMENT AS NOTED (SEE CORNER NOTES)
- COMPUTED POINT, NOT MONUMENTED
- ⊗ FOUND QUARTER CORNER (SEE CORNER NOTES)
- ⊗ FOUND SECTION CORNER (SEE CORNER NOTES)
- ⊗ COMPUTED QUARTER CORNER
- ⊗ COMPUTED SECTION CORNER
- (100000) POINT NUMBER
- PROPOSED ALIGNMENT
- TEMPORARY CONSTRUCTION EASEMENT
- TEMPORARY WORK AREA

REGISTERED PROFESSIONAL LAND SURVEYOR
 MICHAEL W. ERICKSON
 2340
 Expires 12-31-2015

REGISTERED PROFESSIONAL LAND SURVEYOR
 JAMES M. KLEIN
 59002
 Expires 6-30-2015

D THE DYER PARTNERSHIP ENGINEERS & PLANNERS, INC.
 1330 Teakwood Avenue / Coos Bay, Oregon 97420
 (541) 269-0732 / WWW.DYERPART.COM

Klein & Associates, Inc.
 ENGINEERING • SURVEYING • PLANNING
 1411 13th Street • Hood River, OR 97031
 TEL: 541-386-3322 • FAX: 541-386-2515

PACIFIC CONNECTOR GAS PIPELINE PROJECT
 PACIFIC CONNECTOR GAS PIPELINE, LP
 SECTION 5
 RECORD OF SURVEY
 TOWNSHIP 29 SOUTH, RANGE 6 WEST, W.M.
 DOUGLAS COUNTY, OREGON

Pacific Connector GAS PIPELINE

DRAWN BY: LJS	DATE: 09-23-2014	ISSUED FOR BID:	SCALE: 1" = 200'
CHECKED BY:	DATE:	ISSUED FOR CONSTRUCTION:	
APPROVED BY:	DATE:	DRAWING NUMBER:	SHEET 3 OF 3