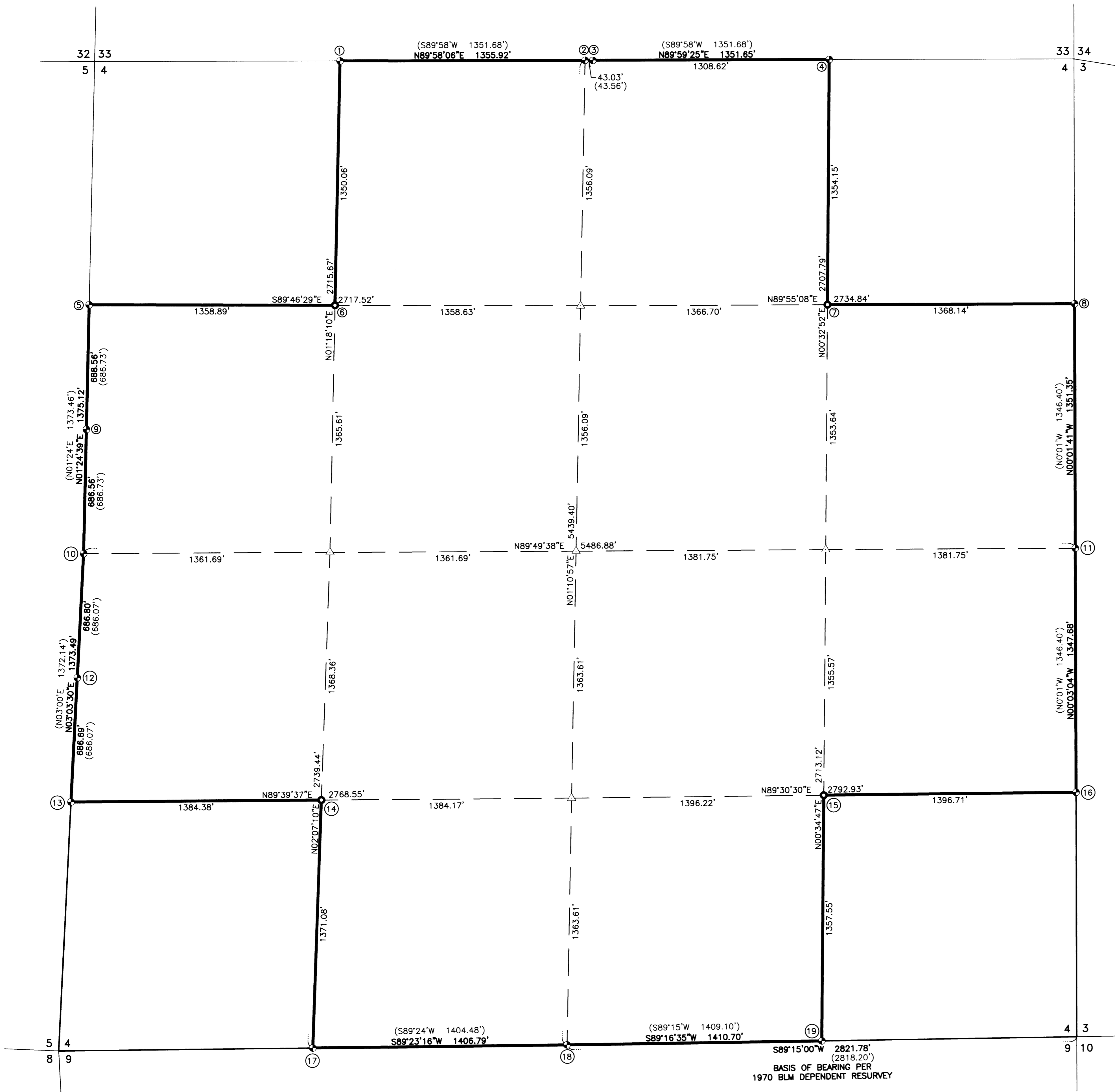


FILED
Date: 11-20-2014 by: J.C.
This survey consists of:
Map: M166-22
Narrative: _____
Corner Rpt: _____

DOUGLAS COUNTY
SURVEYOR



- ① W 1/16 CORNER-SECTION 4
FOUND BRASS CAP PER 1966-1968 BLM RESURVEY
FOUND BEARING OBJECTS:
16" FIR S55'E 30.7' HEALED FACE
20" FIR S70'W 23.8' HEALED FACE
- ② N 1/4 CORNER-SECTION 4 ONLY
FOUND BRASS CAP PER 1966-1968 BLM RESURVEY
FOUND BEARING OBJECTS:
36" FIR S49'E 98.7' HEALED FACE
32" FIR S26'W 39.9' HEALED FACE
NEW BEARING OBJECT:
10" MADRONE N12'W 17.4' SCRIBED "1/4 BT"
- ③ S 1/4 CORNER-SECTION 33
FOUND BRASS CAP, AXLE & BEARING OBJECTS PER DCSO PLSS CORNER RENEWAL NOTES (341700)
- ④ E 1/16 CORNER-SECTION 4
FOUND BRASS CAP PER 1966-1968 BLM RESURVEY
FOUND BEARING OBJECTS:
36" FIR S15'E 58.7' HEALED FACE
60" FIR S70'W 66.0' HEALED FACE
- ⑤ N 1/16 CORNER-SECTION 5|4
FOUND BRASS CAP PER 1966-1968 BLM RESURVEY
FOUND BEARING OBJECTS:
22" FIR N46'E 44.9' HEALED FACE
46" FIR N58'W 116.8' HEALED FACE
24" DIA.x48" TALL BURNED FIR SNAG N82'W 5.9' NO VISIBLE SCRIBE
- ⑥ NW 1/16 CORNER-SECTION 4
SET 5/8" x 30" IRON ROD w/YELLOW PLASTIC CAP STAMPED "IE ENGINEERING"
NEW BEARING OBJECTS:
9" FIR N71'E 11.8'
9" FIR S24'E 7.5'
BOTH SCRIBED "NW 1/16 S4 BT"
- ⑦ NE 1/16 CORNER-SECTION 4
SET 5/8" x 30" IRON ROD w/YELLOW PLASTIC CAP STAMPED "IE ENGINEERING"
NEW BEARING OBJECTS:
5" FIR S16'E 8.3'
13" FIR S60'W 10.4'
BOTH SCRIBED "NE 1/16 S4 BT"
- ⑧ N 1/16 CORNER-SECTION 3|4
FOUND BRASS CAP PER 1966-1968 BLM RESURVEY
FOUND BEARING OBJECTS:
14" FIR S13'E 46.2' HEALED FACE
30" FIR N53'W 12.9' HEALED FACE
- ⑨ SN 1/64 CORNER-SECTION 5|4
FOUND BRASS CAP PER 1966-1968 BLM RESURVEY
FOUND BEARING OBJECTS:
18" MADRONE S15'E 46.5' HEALED FACE
31" FIR S40'W 55.4' HEALED FACE
- ⑩ 1/4 CORNER-SECTION 5|4
FOUND BRASS CAP PER 1966-1968 BLM RESURVEY
FOUND BEARING OBJECTS:
20" HEMLOCK S55'E 21.1' HEALED FACE
66" CEDAR S65'W 37.6' HEALED FACE
30" FIR N26'W 7.9' HEALED FACE
NEW BEARING OBJECT:
15" HEMLOCK N46'E 6.9' SCRIBED "1/4 S4 BT"
- ⑪ 1/4 CORNER-SECTION 4|3
FOUND BRASS CAP PER 1966-1968 BLM RESURVEY
FOUND BEARING OBJECTS:
24" FIR S86'E 95.7' HEALED FACE
30" FIR N53'W 97.7' HEALED FACE
NEW BEARING OBJECTS:
13" FIR S47'W 15.6'
13" FIR N53'E 13.3'
BOTH SCRIBED?
- ⑫ NS 1/64 CORNER-SECTION 5|4
FOUND BRASS CAP PER 1966-1968 BLM RESURVEY
FOUND BEARING OBJECTS:
17" HEMLOCK S38'E 10.9' HEALED FACE
17" FIR S42'W 21.8' HEALED FACE
- ⑬ S 1/16 CORNER-SECTION 5|4
FOUND BRASS CAP PER 1966-1968 BLM RESURVEY
FOUND BEARING OBJECT:
17" HEMLOCK S34'W 25.7' HEALED FACE
NEW BEARING OBJECT:
15" HEMLOCK N77'E 13.2' SCRIBED "S 1/16 S4 BT"
- ⑭ SW 1/16 CORNER-SECTION 4
SET 5/8" x 30" IRON ROD w/YELLOW PLASTIC CAP STAMPED "IE ENGINEERING"
NEW BEARING OBJECTS:
9" FIR N16'W 16.8'
10" FIR N71'E 23.1'
BOTH SCRIBED "1/16 BT"
- ⑮ SE 1/16 CORNER-SECTION 4
SET 5/8" x 30" IRON ROD w/YELLOW PLASTIC CAP STAMPED "IE ENGINEERING"
NEW BEARING OBJECTS:
16" FIR N67'W 32.5'
24" FIR S52'W 32.4'
BOTH SCRIBED "SE 1/16 S4 BT"
- ⑯ S 1/16 CORNER-SECTION 4|3
FOUND BRASS CAP PER 1966-1968 BLM RESURVEY
FOUND BEARING OBJECTS:
36" DIA.x24" TALL FIR STUMP S50'E 29.4' HEALED FACE
10" DIA.x12" TALL FIR SNAG S22'W 44.0' NO VISIBLE SCRIBE
22" FIR N48'E 35.8' HEALED FACE
26" FIR N53'W 50.0' HEALED FACE
- ⑰ W 1/16 CORNER-SECTION 4/9
FOUND BRASS CAP PER 1966-1968 BLM RESURVEY
FOUND BEARING OBJECTS:
28" FIR N27'E 17.8' HEALED FACE
23" FIR S57'W 6.6' HEALED FACE
- ⑱ 1/4 CORNER-SECTION 4/9
FOUND BRASS CAP PER 1966-1968 BLM RESURVEY
FOUND BEARING OBJECTS:
45" FIR N39'E 19.8' HEALED FACE
22" FIR S21'E 25.7' HEALED FACE
50" FIR N65'W 13.9' HEALED FACE
NEW BEARING OBJECT:
39" FIR S74'W 22.6' SCRIBED "1/4 S4 BT"
- ⑳ E 1/16 CORNER-SECTION 4/9
FOUND BRASS CAP PER 1966-1968 BLM RESURVEY
FOUND BEARING OBJECT:
25" FIR S60'W 25.1' HEALED FACE
NEW BEARING OBJECT:
12" FIR N13'W 25.4' SCRIBED "E 1/16 S4 BT"

LEGEND

- SET 5/8" x 30" IRON ROD w/YELLOW PLASTIC CAP STAMPED "IE ENGINEERING"
- ⊕ FOUND BLM BRASS CAP
- △ CALCULATED POSITION - MONUMENT NOT SET
- () RECORD PER 1970 BLM SURVEY
- LINES BLAZED, FLAGGED & POSTED

NARRATIVE:
THE PURPOSE OF THIS MAP IS TO MONUMENT CORNERS AND MARK LINES AS DELINEATED ON THIS SURVEY.
PROCEDURE WAS AS FOLLOWS:
MONUMENTS PER CORNER NOTES RECORDED AT THE DOUGLAS COUNTY SURVEYOR'S OFFICE PER 1966-1968 BLM RESURVEY WERE TIED AND HELD AS SHOWN. THE SECTION WAS THEN SUBDIVIDED PER THE MANUAL OF INSTRUCTIONS AND MONUMENTS SET AS SHOWN.

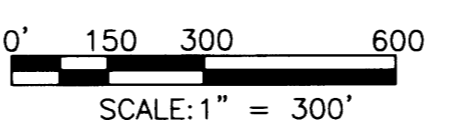
FIELD CREW: NOLAN FROMDAHL, RICHARD OLSON & DAVE MANRING
EQUIPMENT: NIKON TOTAL STATION AND TDS RANGER DATA COLLECTOR
OFFICE: RON QUIMBY
DRAFTING: DEREK FEIGEL



SURVEYED BY:
i.e. ENGINEERING
809 SE Pine Street
Roseburg, Oregon 97470
PHONE (541) 673-0166
FAX (541) 440-9392
email@ieengineering.com

SURVEYED FOR:
C&D LUMBER CO.
1182 PRUNER RD.
RIDDLE, OR 97469

DWG. BY: DAF
PM: RAQ
SCALE: AS NOTED
PAGE: 1 OF 1
JOB NO: 2636-01
DATE: NOV., 2014



RECORD OF SURVEY AND SUBDIVISION OF SECTION 4
LYING IN THE N.W. 1/4, THE N.E. 1/4, THE S.W. 1/4 & THE S.E. 1/4 OF SECTION 4, TOWNSHIP 31 SOUTH, RANGE 5 WEST, WILLAMETTE MERIDIAN, DOUGLAS COUNTY, OREGON