

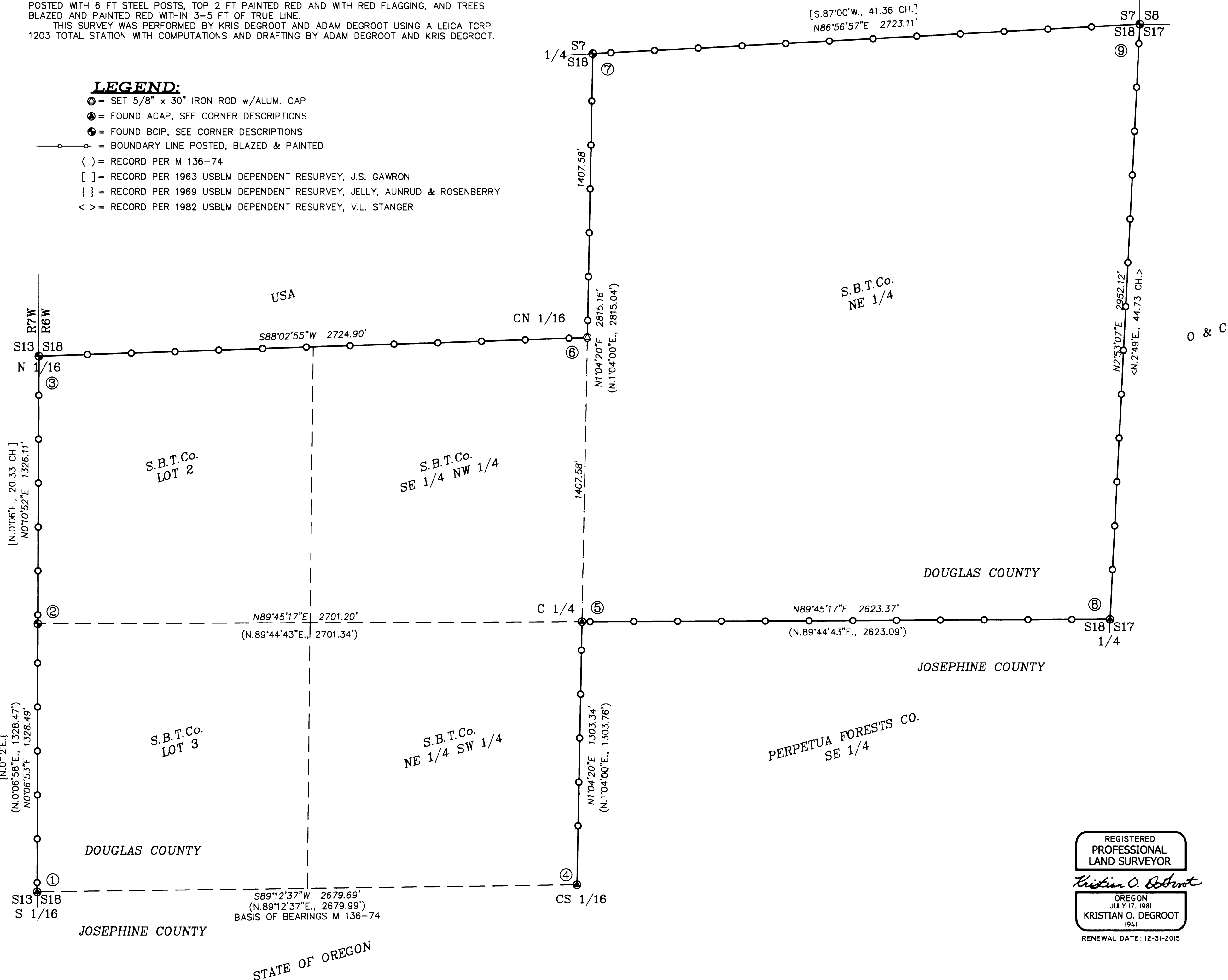
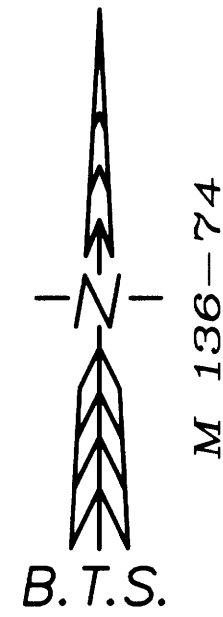
NARRATIVE:

THE PURPOSE OF THIS SURVEY IS TO MONUMENT THE CN 1/16 CORNER OF SECTION 18 AND TO POST, BLAZE AND PAINT THE EAST, NORTH AND WEST BOUNDARIES OF SILVER BUTTE TIMBER CO. LANDS AND ALSO THE COMMON BOUNDARY LINE BETWEEN SILVER BUTTE TIMBER CO. LANDS AND PERPETUA FORESTS COMPANY LANDS LOCATED IN SECTION 18. THE NE CORNER, E 1/4 CORNER AND W 1/4 CORNER ARE FOUND MONUMENTS RESTORED IN THEIR ORIGINAL CORNER POSITIONS, THE N 1/4 CORNER WAS MONUMENTED BY PROPORTIONATE MEASUREMENT BY J.S. GAWRON, USBLM CADASTRAL SURVEYOR IN A 1963-64 DEPENDENT RESURVEY, THE N 1/16 S13/S18 WAS ESTABLISHED BY GAWRON IN 1963, THE S 1/16 S13/S18, CS 1/16 AND C 1/4 CORNER WERE MONUMENTED BY JAMES McINTOSH PER M 136-74. I HELD THE M 136-74 RECORD BETWEEN THE CS 1/16 AND S 1/16 S13/S18 AS THE BASIS OF BEARINGS AND VERY CLOSELY MATCHED THE M 136-74 RECORD BETWEEN ALL FOUND CORNERS EXCEPT THE C 1/4 CORNER. I FOUND THE M 136-74 MONUMENT 1.06' SOUTH AND 0.60' EAST OF THE TRUE CORNER POSITION AND ALSO FOUND SWNG TIES NAILS NORTH AND WEST OF THE MONUMENT. I CONCLUDED THAT A BLUNDER WAS MADE IN MONUMENTING THE CORNER SOUTH AND EAST OF THESE NAILS AND NOT NORTH AND WEST OF THE NAILS. I SPOKE WITH JAMES McINTOSH AND RECEIVED HIS VERBAL APPROVAL TO REMOVE THE MONUMENT AND RESET IT AT THE TRUE INTERSECTION POINT. I THEN COMPUTED AND MONUMENTED THE CN 1/16 CORNER PROPORTIONATELY BETWEEN THE AMENDED C 1/4 CORNER POSITION AND THE FOUND N 1/4 CORNER. A CONVENTIONAL CLOSED LOOP TRAVERSE WAS RUN AROUND THE PERIMETER OF THE PARCEL AND ADJUSTED IN LEICA GEO OFFICE BY THE METHOD OF LEAST SQUARES. THE BOUNDARY WAS POSTED WITH 6 FT STEEL POSTS, TOP 2 FT PAINTED RED AND WITH RED FLAGGING, AND TREES BLAZED AND PAINTED RED WITHIN 3-5 FT OF TRUE LINE. THIS SURVEY WAS PERFORMED BY KRIS DEGROOT AND ADAM DEGROOT USING A LEICA TCPR 1203 TOTAL STATION WITH COMPUTATIONS AND DRAFTING BY ADAM DEGROOT AND KRIS DEGROOT.

LEGEND:

- ⊙ = SET 5/8" x 30" IRON ROD w/ALUM. CAP
- ⊙ = FOUND ACAP, SEE CORNER DESCRIPTIONS
- ⊙ = FOUND BCIP, SEE CORNER DESCRIPTIONS
- = BOUNDARY LINE POSTED, BLAZED & PAINTED
- () = RECORD PER M 136-74
- [] = RECORD PER 1963 USBLM DEPENDENT RESURVEY, J.S. GAWRON
- { } = RECORD PER 1969 USBLM DEPENDENT RESURVEY, JELLY, AUNRUD & ROSENBERY
- < > = RECORD PER 1982 USBLM DEPENDENT RESURVEY, V.L. STANGER

RECORD OF SURVEY
 LOCATED IN
SECTION 18, T33S, R6W, W.M.
DOUGLAS COUNTY, OREGON



CORNER DESCRIPTIONS

ALL NEW BEARING TREES HAVE DOUBLE BLAZED FACES WITH A BRASS WASHER STAMPED "PLS 1941" NAILED INTO THE LOWER BLAZE. BEARINGS ARE TAKEN TO THE CENTER OF THE TREE AT THE ROOT CROWN AND DISTANCES ARE MEASURED TO A NAIL IN THE ROOT CROWN AT THE SIDE AND CENTER OF THE TREE WITH A TOTAL STATION. ALL BEARING TREES HAVE A 6" RED BAND PAINTED AROUND THE TREE AND THE BLAZED FACE PAINTED RED AND BEARING TREE SIGNS NAILED TO THE TREE.

1. S 1/16 S13/S18 GCDB 100420
 FD. A 1 1/2" ALUMINUM PIPE BY McINTOSH IN 2001 PER M 136-74, FIRMLY SET, PROJECTING 8" ABOVE THE GROUND, WITH A PROPERLY MKD. 3 3/4" ALUMINUM CAP, FROM WHICH:
 BEARING TREES BY McINTOSH PER M 136-74:
 A 18" D.FIR SAW STUMP BEARS N.66°43'E., 57.86 FT TO A 8" MAG-HUB SET IN CTR OF STUMP (N.71°E., 56.5 FT)
 A 20" D.FIR BEARS S.82 1/4"W., 31.0 FT WITH A HEALED & BURNED BLAZE (S.86"W, 29.9 FT)
 AND A NEW REFERENCE:
 A 8" MAG-HUB & WASHER IN SOUTH END OF 48" D.FIR SAW STUMP BEARS N.19°36'W., 66.23 FT
 CORNER FALLS IN 2013 BURNED AREA WITH ACTIVE LOGGED UNITS TO THE EAST IN S18.
2. 1/4 S13/S18 GCDB 100440
 FD. A 2 1/2" IRON POST BY USBLM CADASTRAL SURVEYOR J.S. GAWRON IN 1963, FIRMLY SET, PROJECTING 12" ABOVE THE GROUND, WITH A PROPERLY MKD. 3 1/4" BRASS CAP, FROM WHICH:
 AN ORIGINAL BEARING TREE:
 A 40" D.FIR BEARS N.49 3/4"W., 16.9 FT WITH A RE-HEALED BLAZE (N.52"W., 26 LKS)
 AND BEARING TREES BY GAWRON IN 1963:
 A 12" D.FIR BEARS S.72 1/4"E., 92.0 FT WITH A HEALED BLAZE (S.72"E., 140 LKS)
 A 10"x 8" TALL D.FIR STUB BEARS S.78 1/2"W., 49.6 FT WITH SCRIBE MKS "T" VISIBLE ON PARTIALLY HEALED BLAZE (S.78"W., 74 LKS)
3. N 1/16 S13/S18 GCDB 100460
 FD. A 2 1/2" IRON POST BY USBLM CADASTRAL SURVEYOR J.S. GAWRON IN 1964, FIRMLY SET, PROJECTING 10" ABOVE THE GROUND, WITH A PROPERLY MKD. 3 1/4" BRASS CAP, FROM WHICH:
 BEARING TREES BY GAWRON IN 1963:
 A 21" D.FIR BEARS S.49 1/2"W., 25.3 FT WITH HEALED BLAZE (S.49"W., 38 LKS)
 A 12" CHINQUAPIN BEARS S.81 1/2"E., 13.2 FT WITH NO VISIBLE BLAZE (S.80"E., 20 LKS)
4. CS 1/16 S18 GCDB 140420
 FD. A 1 1/2" ALUMINUM PIPE BY McINTOSH IN 2001 PER M 136-74, FIRMLY SET, PROJECTING 4" ABOVE THE GROUND, WITH A PROPERLY MKD. 3 3/4" ALUMINUM CAP, FROM WHICH:
 BEARING TREES BY McINTOSH PER M 136-74:
 A 6" CHINQUAPIN SAW STUMP BEARS N.64°56'E., 12.87 FT TO ALUM SPIKE IN CTR OF STUMP (N.69 °E., 12.7 FT)
 A 29" D.FIR BEARS N.56"W., 60.0 FT WITH HEALED & BURNED BLAZE-NOTCHED AS TAIL HOLD (N.52"W., 59.4 FT)
 AND A NEW REFERENCE:
 A 8" MAG-HUB & WASHER IN CTR OF A 22" D.FIR SAWED STUMP BEARS S.41°06'W., 61.39 FT
 CORNER FALLS IN 2013 BURNED AREA WITH ACTIVE LOGGED UNITS TO THE SOUTH & EAST.
5. C 1/4 S18 GCDB 140440
 FD. A 1 1/2" ALUMINUM PIPE BY McINTOSH IN 2001 PER M 136-74, FIRMLY SET, PROJECTING 6" ABOVE THE GROUND, WITH A 3 3/4" OREGON DEPT. OF FORESTRY ALUM CAP, ORIGINALLY SET OUT OF RECORD POSITION FROM ALUM NAIL SWING-TIES. WE REMOVE AND RE-SET MONUMENT PROJECTING 10" ABOVE GROUND AT THE TRUE INTERSECTION POINT, N.29°43'16"W., 1.22 FT FROM THE ERRONEOUS POSITION, WITH THE CAP NOW STAMPED:

T33S R6W
AM
C 1/4 S18
PLS 1941 2014
2001
LS2013

 FROM WHICH BEARING TREES BY McINTOSH PER M 136-74:
 A 16" D.FIR BEARS N.48"W., 15.0 FT WITH HEALED BLAZE (N.43"W., 15.6 FT)
 A 18" D.FIR BEARS N.39 3/4"E., 11.3 FT WITH HEALED BLAZE (N.39 3/4"E., 11.3 FT)
 A 14" CEDAR BEARS S.58 1/4"E., 7.3 FT WITH PARTIALLY HEALED BLAZE (S.62"E., 5.7 FT)
 AND REFERENCES BY McINTOSH PER M 136-74:
 A CARSONITE POST BEARS S.16 3/4"E., 4.3 FT (S.11"E., 3.15 FT)
 A 4"x 4" CEDAR POST BEARS S.41"W., 4.0 FT (S.61"W., 3.5 FT)
6. CN 1/16 S18 GCDB 140460
 SET A 5/8"x 30" IRON ROD, 28" IN THE GROUND, WITH A 2" DIAM. ALUM. CAP STAMPED:

T33S R6W
N 1/16 S18
C
2014
PLS1941

 FROM WHICH NEW BEARING TREES:
 A 8" D.FIR BEARS N.0°30'W., 46.0 FT SCRIBED "CN 1/16 S18 BT"
 A 13" D.FIR BEARS N.65 3/4"W., 47.4 FT SCRIBED "CN 1/16 S18 BT"
7. 1/4 S7/S18 GCDB 140500
 FD. A 2 1/2" IRON POST BY USBLM CADASTRAL SURVEYOR J.S. GAWRON IN 1964, FIRMLY SET, PROJECTING 6" ABOVE THE GROUND, WITH A PROPERLY MKD. 3 1/4" BRASS CAP, FROM WHICH:
 BEARING TREES BY GAWRON:
 A 24" D.FIR BEARS N.56 3/4"E., 35.8 FT WITH HEALED BLAZE (N.57"E., 55.5 LKS)
 A 33" D.FIR BEARS S.75 3/4"W., 25.5 FT WITH HEALED BLAZE (S.76"W., 39 LKS)
 AND A BEARING TREE BY McINTOSH PER M 136-74:
 A 29" D.FIR BEARS N.4"W., 17.4 FT WITH HEALED BLAZE (N.1"E., 16.4 FT)
8. 1/4 S18/S17 GCDB 200440
 FD. A 2 1/2" ALUM. POST BY USBLM CADASTRAL SURVEYOR V.L. STANGER IN 1982, FIRMLY SET, PROJECTING 10" ABOVE THE GROUND, WITH A PROPERLY MKD. 3 1/4" ALUM. CAP, FROM WHICH:
 AN ORIGINAL BEARING TREE:
 A 20" B.OAK SNAG BEARS N.44"E., 16.3 FT WITH HEALED BLAZE-BURNED & HOLLOW (N.45"E., 25 LKS)
 AND BEARING TREES BY SANGER:
 A 29" P.PINE BEARS S.86 1/4"E., 40.8 FT WITH HEALED BLAZE - BURNED (S.86 3/4"E., 62.5 LKS)
 A 32" D.FIR BEARS S.55 3/4"W., 54.7 FT WITH HEALED BLAZE (S.55 3/4"W., 83 LKS)
 CORNER FALLS IN 2013 BURNED AREA
9. S7/S8/S17/S18 GCDB 200500
 FD. A 1 1/4" IRON POST BY BYRON IN 1963 PER C.S. 53/8, FIRMLY SET, PROJECTING 12" ABOVE THE GROUND, WITH A PROPERLY MKD. 2 1/2" BRASS CAP, FROM WHICH:
 REMAINS OF THE ORIGINAL BEARING TREES:
 A 20" ROTTED FIR STUMP BEARS N.50 1/2"E., 15.0 FT (N.50 3/4"E., 23.5 LKS)
 A 34"x 15" FIR SNAG BEARS N.50"W., 19.4 FT WITH SAW & AXE MKS (N.50"W., 29 LKS)
 AND BEARING TREES BY DCSO IN 1963:
 A 24" D.FIR SAW STUMP BEARS N.28 1/2"E., 20.7 FT., SET 8" MAG-NAIL IN CTR (N.29"E., 20.4 FT)
 A 12" CHINQUAPIN BEARS S.6 3/4"E., 8.0 FT WITH HEALED BLAZE (S.7"E., 7.9 FT)
 A 20" MADRONE BEARS S.76 1/2"W., 38.1 FT WITH PARTIALLY HEALED BLAZE (S.75"W., 35.2 FT)
 A 24" D.FIR BEARS N.69"W., 19.8 FT WITH HEALED BLAZE (N.70"W., 20.0 FT)
 AND A NEW BEARING TREE:
 A 16" D.FIR BEARS N.87 1/4"E., 22.6 FT SCRIBED "T33S R6W S8 BT"

REGISTERED
 PROFESSIONAL
 LAND SURVEYOR
Kristian O. Degroot
 OREGON
 JULY 17, 1981
 KRISTIAN O. DEGROOT
 1941
 RENEWAL DATE: 12-31-2015

BTS ENGINEERING & SURVEYING, INC.
 431 S.E. MAIN ST., ROSEBURG, OR 97470
 PHONE (541) 673-0966 FAX (541) 673-0105

SCALE: 1" = 300'	FOR: SILVER BUTTE TIMBER CO. P.O. BOX 4 RIDDLE, OR 97496	JOB #: 14-047 FILE: 14-047 Plat.dwg SHEET 1 OF 1
DATE: NOV. 5, 2014		