

RECORD OF SURVEY

LOCATED IN
TOWNSHIP 30 SOUTH, RANGE 3 WEST, W.M.
DOUGLAS COUNTY, OREGON

FILED
Date: 10-14-2014 By: J.C.
This survey consists of:
Map: M166-19 A-E
Narrative:
Corner Rpt:
DOUGLAS COUNTY
SURVEYOR

CORNER NOTES:

(140347)
NORTH 1/16 CORNER SECTIONS 34/35
FOUND 3-1/4" BRASS CAP
STAMPED BLM 1983
BT REFERENCES:
1) 20.4" WHITE FIR WITH VISIBLE SCRIBES
AND TAG DATED 6/83
S 12-1/2" E - 15.2' TO NAIL SIDE CENTER
2) 13.7" WHITE FIR WITH VISIBLE SCRIBES
AND TAG DATED 6/83
S 57-1/2" W - 11.2' TO NAIL SIDE CENTER

(140378)
CENTER-NORTH 1/16 CORNER SECTION 35
FOUND 3-1/4" BRASS CAP
STAMPED BLM 1983
BT REFERENCES:
1) 11" FIR WITH VISIBLE SCRIBES
AND TAG DATED 6/83
N 53-1/2" E - 37.0' TO NAIL SIDE CENTER
2) 13.7" FIR WITH HEALED FACE
SET TAG DATED 11/13
S 29" W - 21.8' TO NAIL SIDE CENTER

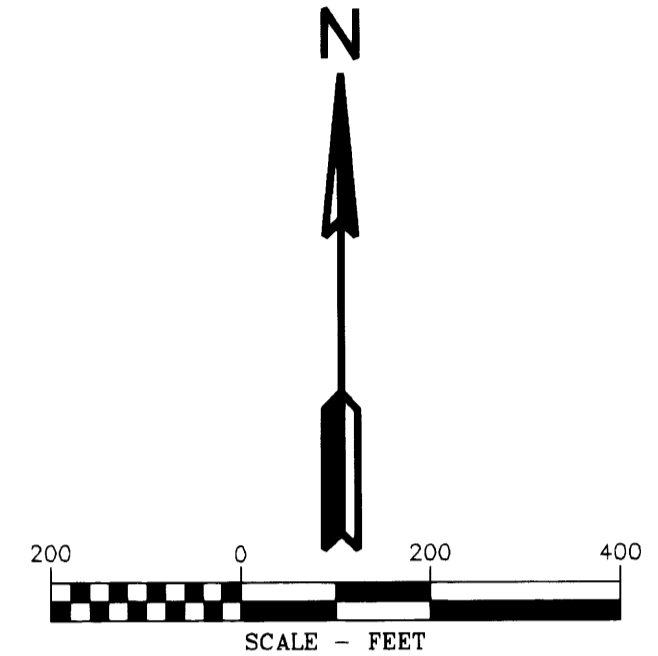
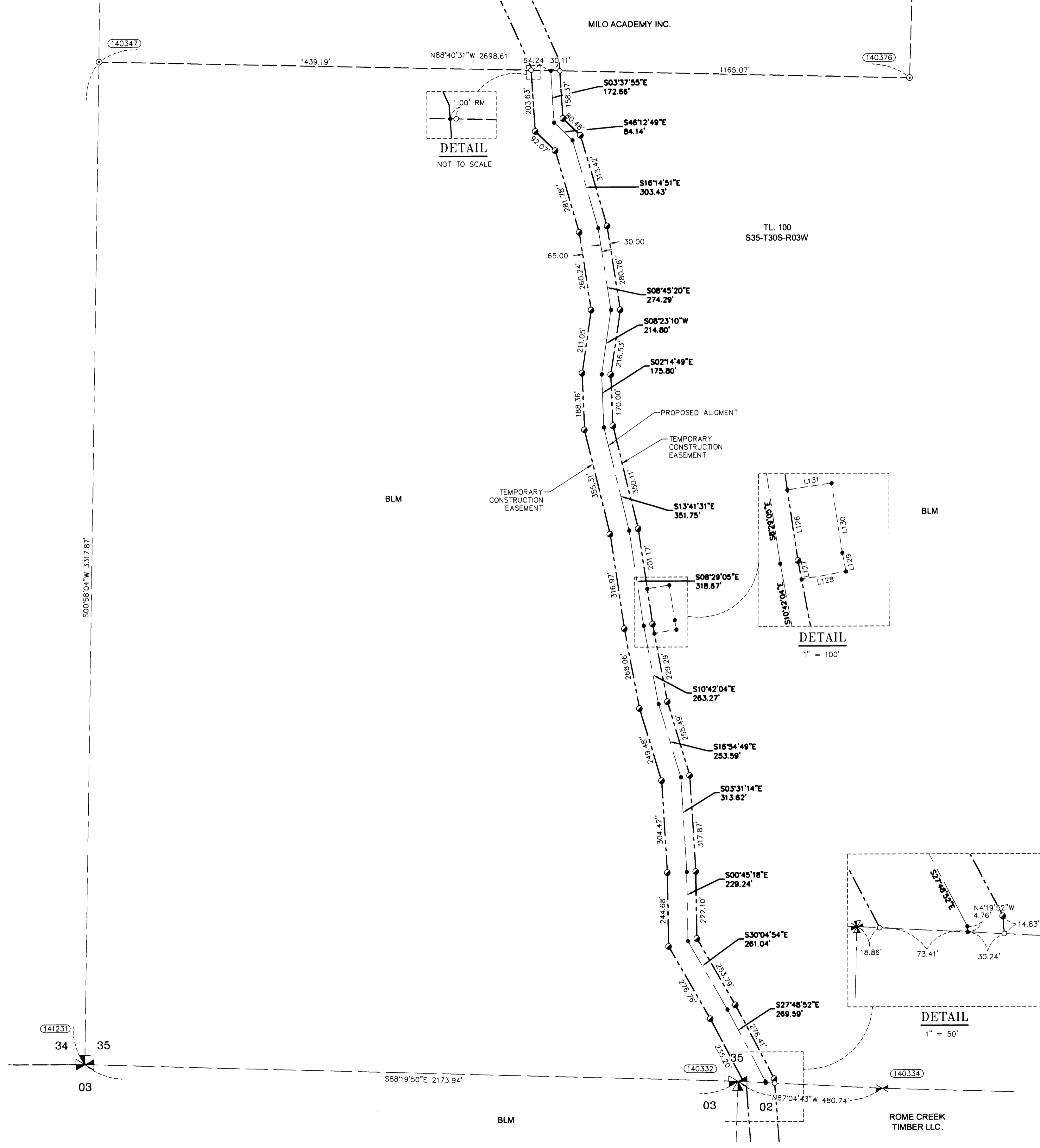
(141231)
SOUTHWEST CORNER SECTIONS 35
FOUND 2-1/2" BRASS CAP
STAMPED COUNTY SURVEYOR OFFICE 1965
BT REFERENCES:
1) 27" MADRONE WITH TAG DATED 12/65
S 36" E - 18.0'
2) 36.5" FIR WITH HEALED "X"
SET TAG DATED 4/14
S 55" W - 27.4' TO NAIL SIDE CENTER
3) 20" MADRONE WITH TAG DATED 12/65
N 75" W - 10.5'

(140332)
NORTHWEST CORNER SECTION 2-T31S,R3W
CLOSING CORNER
FOUND 2-1/2" BRASS CAP
STAMPED COUNTY SURVEYORS OFFICE 1965
BT REFERENCES:
1) 22" WHITE FIR WITH HEALED FACE
AND TAG DATED 1959
N 84" W - 24.6' TO NAIL SIDE CENTER
2) 33.5" DOUG FIR WITH HEALED FACE
AND TAG DATED 7/57
S 36" W - 16.0' TO NAIL SIDE CENTER
3) 9" WHITE FIR WITH HEALED FACE
AND TAG DATED 1959
S 73" W - 13.0' TO NAIL SIDE CENTER
4) 51" DOUG FIR WITH HEALED FACE
AND TAG DATED 7-57
S 18" E - 28.4' TO NAIL SIDE CENTER

(140333)
SOUTH 1/4 CORNER SECTIONS 35
FOUND 2-1/2" BRASS CAP
STAMPED COUNTY SURVEYORS OFFICE 1965
RESET 1983
BT REFERENCES:
1) 19.3" HEMLOCK WITH HEALED FACE
AND TAG DATED 7/83
N 56-1/2" E - 24.7' TO NAIL SIDE CENTER
2) 19.5" DOUG FIR WITH HEALED FACE
SET TAG DATED 10/13
S 23-1/2" W - 13.9' TO NAIL SIDE CENTER

LEGEND

- SET 5/8" X 24" REBAR WITH 1 1/4" YELLOW PLASTIC CAP (KLEIN & ASSOC. PLS 59002)
- SET 5/8" X 24" REBAR WITH 1 1/4" YELLOW PLASTIC CAP (KITZ 1853)
- ⊙ FOUND MONUMENT OF RECORD, SEE CORNER NOTES
- COMPUTED POINT, NOT MONUMENTED
- ⊙ FOUND QUARTER CORNER SEE CORNER NOTES
- ⊙ FOUND SECTION CORNER SEE CORNER NOTES
- ⊙ COMPUTED QUARTER CORNER
- ⊙ COMPUTED SECTION CORNER
- POINT NUMBER
- RM REFERENCE MONUMENT
- PROPOSED ALIGNMENT
- - - - - TEMPORARY CONSTRUCTION EASEMENT
- - - - - TEMPORARY WORK AREA



AREA SECTION 35

TEMPORARY CONSTRUCTION EASEMENT	7.61 ACRES
TEMPORARY WORK AREA	0.25 ACRES

LINE TABLE

Line #	Direction	Length
L126	S8°29'05"E	118.28
L127	S10°42'04"E	31.77
L128	S79°59'19"W	75.11
L129	S10°56'53"E	31.55
L130	S8°43'54"E	116.77
L131	N81°18'56"E	74.45

REGISTERED PROFESSIONAL LAND SURVEYOR
RICHARD R. KITZ
1853
Expires 6-30-2015

REGISTERED PROFESSIONAL LAND SURVEYOR
JAMES M. KLEIN
59002
Expires 6-30-2015

EASTSIDE CONSULTANTS, INC.
ENGINEERS-SURVEYORS
1330 N.W. MALL ST., SUITE 200
BEND, OREGON 97701
PHONE: (531) 382-4477
FAX: (531) 382-4478

Klein & Associates, Inc.
ENGINEERING SURVEYING PLANNING
1411 13th Street + Hood River, OR 97031
TEL: 541-386-3322 + FAX: 541-386-2515

PACIFIC CONNECTOR GAS PIPELINE PROJECT
PACIFIC CONNECTOR GAS PIPELINE, LP
RECORD OF SURVEY
SECTION 35
TOWNSHIP 30 SOUTH, RANGE 3 WEST, W.M.
DOUGLAS COUNTY OREGON

Pacific Connector GAS PIPELINE

DRAWN BY: LIS	DATE: 09-02-2014	ISSUED FOR BID:	SCALE: 1" = 200'
CHECKED BY: JK	DATE: 09-23-2014	ISSUED FOR CONSTRUCTION:	
APPROVED BY: JK	DATE: 09-23-2014	DRAWING NUMBER:	SHEET 5 OF 5