

RECORD OF SURVEY

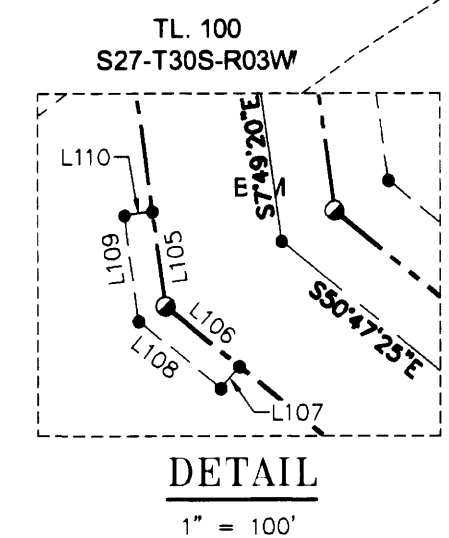
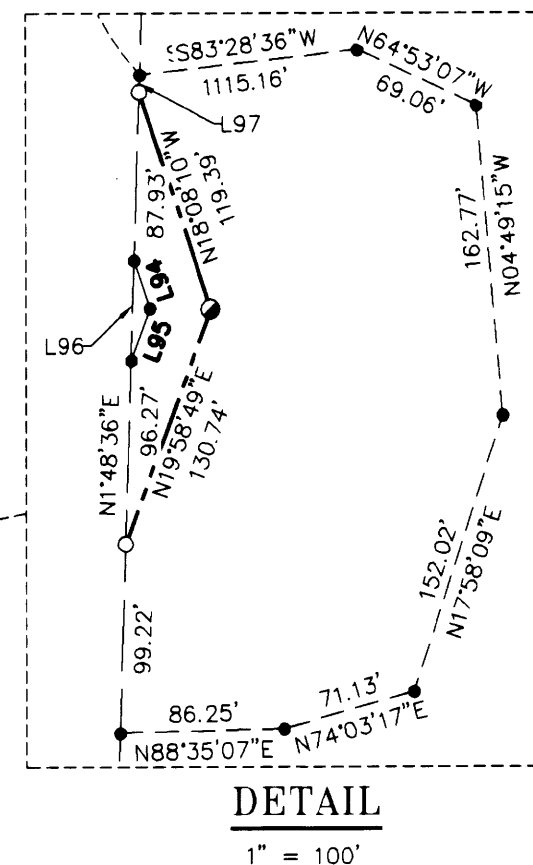
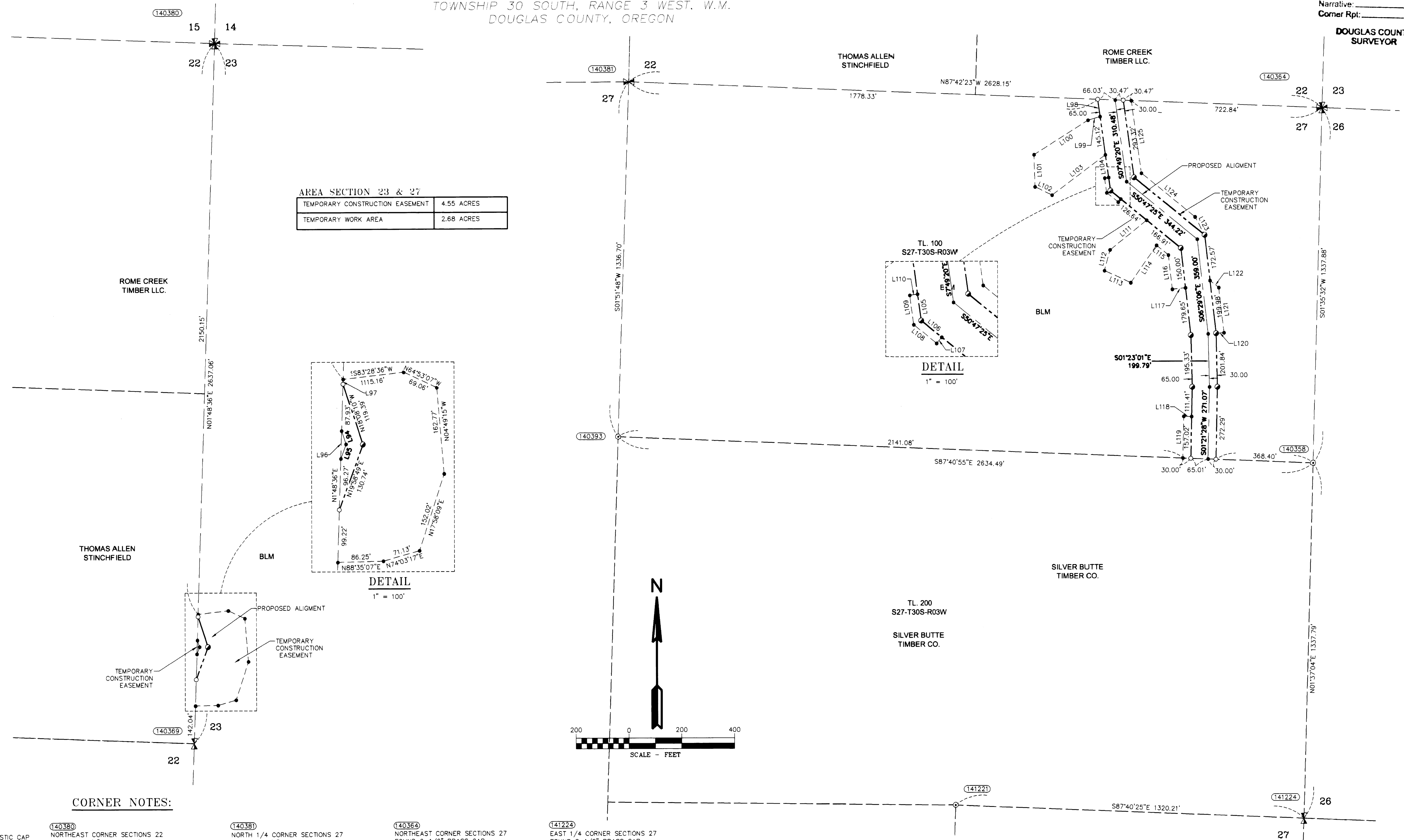
LOCATED IN
TOWNSHIP 30 SOUTH, RANGE 3 WEST, W.M.
DOUGLAS COUNTY, OREGON

FILED
Date: 10-14-2014 By: J.C.
This survey consists of
Map: M1166-19A-E
Narrative:
Corner Rpt:

LINE TABLE

Line #	Direction	Length
L94	S18°08'24"E	26.39
L95	S19°58'02"W	28.90
L96	N1°48'36"E	52.27
L97	N1°48'36"E	9.19
L98	S7°49'20"E	65.48
L99	S73°22'43"W	30.54
L100	S57°54'27"W	242.24
L101	S1°38'12"E	121.79
L102	S64°03'28"E	71.56
L103	N53°13'32"E	253.33
L104	S7°49'20"E	86.90
L105	S7°49'20"E	50.15
L106	S50°47'25"E	49.80
L107	N39°12'51"E	15.00
L108	S50°47'36"E	55.70
L109	S7°49'20"E	56.05
L110	S82°10'02"W	15.00
L111	N51°20'26"E	178.18
L112	N1°55'53"E	81.00
L113	N65°28'49"W	108.96
L114	S35°00'05"W	170.87
L115	N50°47'25"W	57.83
L116	N6°29'06"W	129.60
L117	S83°33'29"W	50.00
L118	S88°40'32"E	30.00
L119	S1°21'28"W	156.50
L120	N86°03'58"E	30.03
L121	N6°29'06"W	171.28
L122	N51°26'30"W	42.46
L123	N27°53'31"W	77.10
L124	N50°47'25"W	261.79
L125	N7°49'20"W	276.16

AREA SECTION 23 & 27	
TEMPORARY CONSTRUCTION EASEMENT	4.55 ACRES
TEMPORARY WORK AREA	2.68 ACRES



CORNER NOTES:

LEGEND

- SET 5/8" X 24" REBAR WITH 1 1/4" YELLOW PLASTIC CAP (KLEIN & ASSOC. PLS 59002)
- SET 5/8" X 24" REBAR WITH 1 1/4" YELLOW PLASTIC CAP (KITZ 1853)
- ⊙ FOUND MONUMENT OF RECORD, SEE CORNER NOTES
- COMPUTED POINT, NOT MONUMENTED
- ⊙ FOUND QUARTER CORNER SEE CORNER NOTES
- ⊙ FOUND SECTION CORNER SEE CORNER NOTES
- ⊙ COMPUTED QUARTER CORNER
- ⊙ COMPUTED SECTION CORNER
- 1000000 POINT NUMBER
- RM REFERENCE MONUMENT
- PROPOSED ALIGNMENT
- - - - - TEMPORARY CONSTRUCTION EASEMENT
- - - - - TEMPORARY WORK AREA

- (140380)**
NORTHEAST CORNER SECTIONS 22
FOUND 2-1/2" BRASS CAP
STAMPED COUNTY SURVEYOR 1977
BT REFERENCES:
1) 11" FIR WITH VISIBLE SCRIBES AND BLM TAG DATED 2008
N 49-3/4" E - 27.7' TO NAIL SIDE CENTER
2) 7" FIR WITH VISIBLE SCRIBES AND BLM TAG DATED 2008
S 46-1/4" E - 32.2' TO NAIL SIDE CENTER
3) 10" FIR WITH VISIBLE SCRIBES AND BLM TAG DATED 2008
N 72-1/4" W - 16.0' TO NAIL SIDE CENTER
- (140389)**
EAST 1/4 CORNER SECTION 22
FOUND 2-1/2" BRASS CAP
STAMPED COUNTY SURVEYORS OFFICE 1967
BT REFERENCES:
1) 20" PINE WITH HEALED FACE AND TAG DATED 9/87
S 86' W - 13.8' TO NAIL SIDE CENTER
2) 18" FIR WITH HEALED FACE AND TAG DATED 9-87
S 41' E - 12.6' TO NAIL SIDE CENTER

- (140381)**
NORTH 1/4 CORNER SECTIONS 27
FOUND 1-1/4" IRON PIPE
ACCEPTED AS 1/4 CORNER
BT REFERENCES:
1) 24.5" FIR WITH HEALED FACE AND TAG DATED 08/05
S 35' E - 22.0'
2) 16" HEMLOCK WITH VISIBLE SCRIBE AND TAG DATED 08/05
S 83-1/2" W - 34.7'

- (140393)**
CENTER-NORTH 1/16 CORNER SECTION 27
FOUND 1-1/2" ALUMINUM CAP
STAMPED PLS 1941, 2007
BT REFERENCES:
1) 30.5" FIR WITH TAG DATED 11/07
N 3°45' W - 23.1' TO NAIL IN SIDE
2) 11" FIR WITH TAG DATED 11/07
N 82-3/4" W - 20.6' TO NAIL IN SIDE

- (140364)**
NORTHEAST CORNER SECTIONS 27
FOUND 2-1/2" BRASS CAP
STAMPED COUNTY SURVEYORS OFFICE 1963
BT REFERENCES:
1) 10" FIR WITH TAG DATED 5/08
N 44-1/2" E - 16.4"
2) 34" RED FIR WITH TAG DATED 01/63
S 39' E - 45.0'
3) 22" CEDAR SNAG WITH TAG 1/63
S 07' W - 54.8'
4) 11" FIR WITH TAG DATED 05/08
S 22-3/4" W - 18.9'
5) 16.5" FIR WITH TAG DATED 05/08
N 52-1/4" W - 30.3'

- (140358)**
NORTH 1/16 CORNER SECTIONS 27/26
FOUND 1-1/2" ALUMINUM CAP
STAMPED PLS 1941, 2007
BT REFERENCES:
1) 9" FIR WITH TAG DATED 11/07
S 19' E - 13.1'
2) 8.5" FIR WITH TAG
N 75-3/4" W - 17.3'

- (141224)**
EAST 1/4 CORNER SECTIONS 27
FOUND 2-1/2" BRASS CAP
STAMPED COUNTY SURVEYORS OFFICE 1963
BT REFERENCES:
1) 14" PONDEROSA PINE WITH VISIBLE SCRIBE
N 89' E - 14.2"
2) 14" SNAG 30' TALL WITH TAG DATED 1/63
N 18' W - 45.8"
3) 31" PINE WITH HEALED FACE
AND TAG DATED 1/63
N 20' W - 52.8"

- (141221)**
CENTER-EAST 1/16 CORNER SECTION 27
FOUND 1-1/2" ALUMINUM CAP
STAMPED PLS 1941, 2007
BT REFERENCES:
1) 12" FIR WITH HEALED FACE AND TAG DATED 11/07
S 82-3/4" E - 20.6' TO NAIL SIDE CENTER
2) 19" FIR WITH HEALED FACE AND TAG DATED 11/07
S 11-1/2" W - 34.4' TO NAIL SIDE CENTER

REGISTERED PROFESSIONAL LAND SURVEYOR
Richard R. Kitz
OREGON
JULY 13, 1992
RICHARD R. KITZ
1853
Expires 8-30-2015

REGISTERED PROFESSIONAL LAND SURVEYOR
James M. Klein
OREGON
JULY 13, 2006
JAMES M. KLEIN
5902
Expires 8-30-2015

EASTSIDE CONSULTANTS, INC.
ENGINEERING • SURVEYING
1100 N.W. 3RD ST., SUITE 100
PORTLAND, OREGON 97208
PHONE: (503) 288-8241
FAX: (503) 288-8276

Klein & Associates, Inc.
ENGINEERING • SURVEYING • PLANNING
1411 13th Street • Hood River, OR 97031
TEL: 541-386-3322 • FAX: 541-386-2515

PACIFIC CONNECTOR GAS PIPELINE PROJECT
PACIFIC CONNECTOR GAS PIPELINE, LP
RECORD OF SURVEY
SECTION 22 & 27
TOWNSHIP 30 SOUTH, RANGE 3 WEST, W.M.
DOUGLAS COUNTY OREGON

Pacific Connector
GAS PIPELINE

DRAWN BY: LJS	DATE: 09-02-2014	ISSUED FOR BID:	SCALE: 1" = 200'
CHECKED BY: JK	DATE: 09-23-2014	ISSUED FOR CONSTRUCTION:	
APPROVED BY: JK	DATE: 09-23-2014	DRAWING NUMBER:	SHEET 4 OF 5