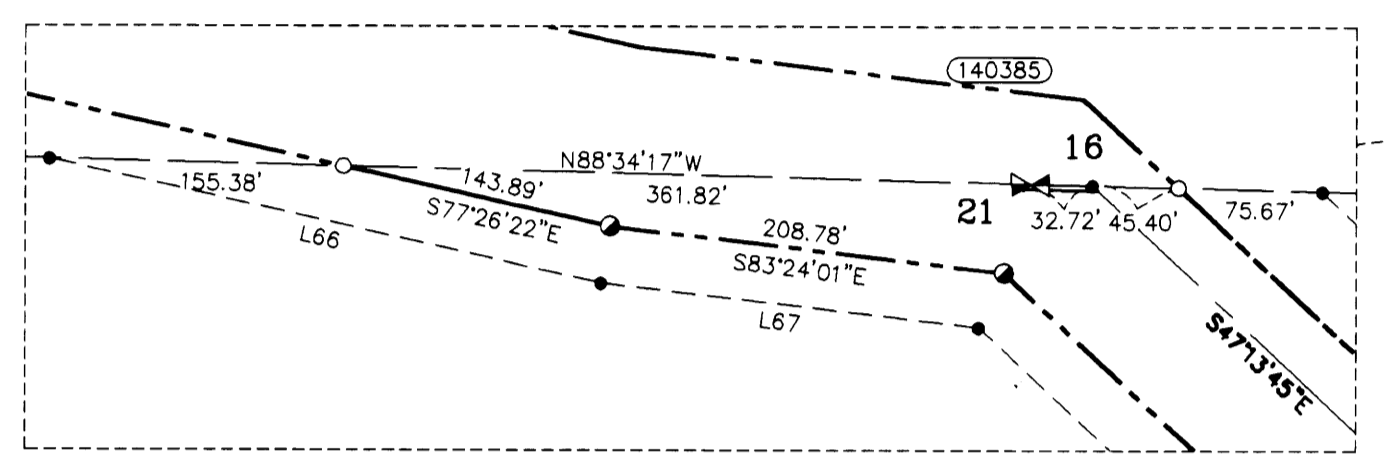
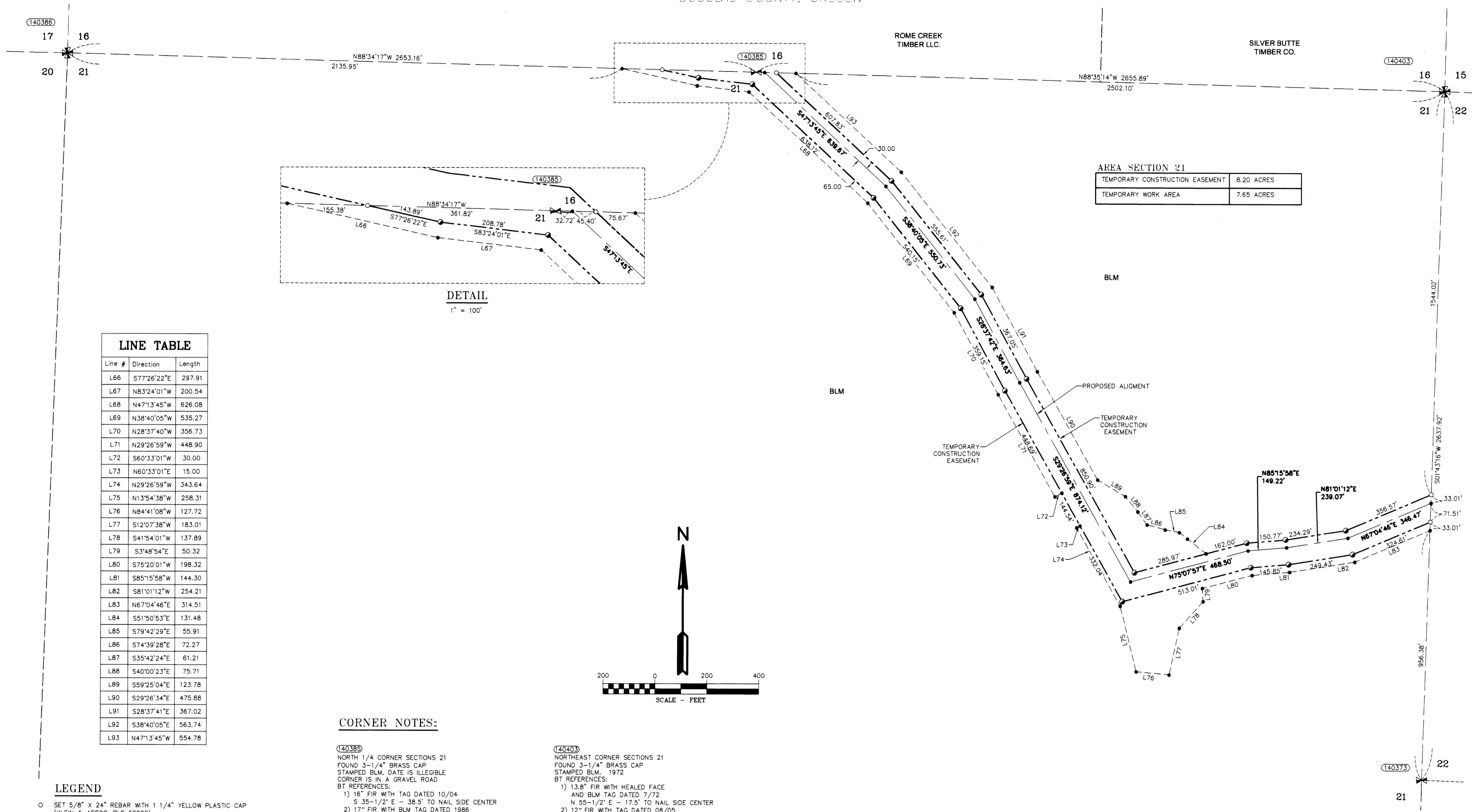


RECORD OF SURVEY

LOCATED IN
TOWNSHIP 30 SOUTH, RANGE 3 WEST, W.M.
DOUGLAS COUNTY, OREGON

FILED
Date: 10-14-2014 by: JC
This survey consists of:
Map: M166-19A-C
Narrative:
Corner Rpt:
DOUGLAS COUNTY SURVEYOR



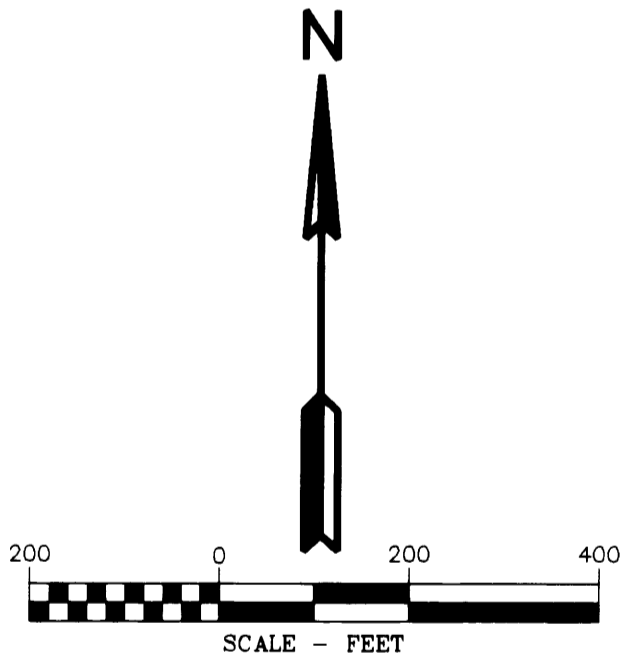
DETAIL
1" = 100'

AREA SECTION 21

TEMPORARY CONSTRUCTION EASEMENT	8.20 ACRES
TEMPORARY WORK AREA	7.65 ACRES

LINE TABLE

Line #	Direction	Length
L66	S77°26'22"E	297.91
L67	N83°24'01"W	200.54
L68	N47°13'45"W	626.08
L69	N38°40'05"W	535.27
L70	N28°37'40"W	356.73
L71	N29°26'59"W	448.90
L72	S60°33'01"W	30.00
L73	N60°33'01"E	15.00
L74	N29°26'59"W	343.64
L75	N13°54'38"W	258.31
L76	N84°41'08"W	127.72
L77	S12°07'38"W	183.01
L78	S41°54'01"W	137.89
L79	S3°48'54"E	50.32
L80	S75°20'01"W	198.32
L81	S85°15'58"W	144.30
L82	S81°01'12"W	254.21
L83	N67°04'46"E	314.51
L84	S51°50'53"E	131.48
L85	S79°42'29"E	55.91
L86	S74°39'28"E	72.27
L87	S35°42'24"E	61.21
L88	S40°00'23"E	75.71
L89	S59°25'04"E	123.78
L90	S29°26'34"E	475.88
L91	S28°37'41"E	367.02
L92	S38°40'05"E	563.74
L93	N47°13'45"W	554.78



CORNER NOTES:

- (140385) NORTH 1/4 CORNER SECTIONS 21
FOUND 3-1/4" BRASS CAP
STAMPED BLM, DATE IS ILLEGIBLE
CORNER IS IN A GRAVEL ROAD
BT REFERENCES:
1) 16" FIR WITH TAG DATED 10/04
S 35-1/2° E - 38.5' TO NAIL SIDE CENTER
2) 17" FIR WITH BLM TAG DATED 1986
S 0° W - 8.0'
3) 28" FIR WITH BLM TAG
S 44° W - 61.4'
4) 28.5" STUMP 6 FT. TALL WITH TAG DATED 7/72
N 33-1/2° W - 58.1'
- (140385) NORTHWEST CORNER SECTION 21
FOUND 3-1/4" BRASS CAP
STAMPED BLM, 1972
BT REFERENCES:
1) 9" FIR WITH TAG DATED 10/04
S 31-1/2° W - 13.1'
2) 24" MAPLE WITH TAG DATED 9-97
S 51° W - 44.4'
3) 14" FIR WITH TAG DATED 10/04
N 83-1/2° W - 83.7'
- (140403) NORTHEAST CORNER SECTIONS 21
FOUND 3-1/4" BRASS CAP
STAMPED BLM, 1972
BT REFERENCES:
1) 13.8" FIR WITH HEALED FACE
AND BLM TAG DATED 7/72
N 55-1/2° E - 17.5' TO NAIL SIDE CENTER
2) 12" FIR WITH TAG DATED 08/05
S 40-1/2° E - 9.3' TO NAIL SIDE CENTER
3) 13" FIR WITH HEALED FACE
AND BLM TAG DATED 08/72
S 28° W - 15.2' TO NAIL SIDE CENTER
4) 12.3" FIR WITH HEALED FACE
AND BLM TAG DATED 07/72
N 36-1/2° W - 31.7' TO NAIL SIDE CENTER
- (140373) EAST 1/4 CORNER SECTION 21
FOUND 2-1/2" BRASS CAP
STAMPED COUNTY SURVEYORS OFFICE 1963
BT REFERENCES:
1) 23.5" FIR WITH HEALED FACE (ORIGINAL BT)
WITH TAG DATED 1986
N 42° E - 5.9'
2) 48" FIR WITH HEALED FACE
AND TAG DATED 7/72
S 55° E - 17.5'
3) 34" FIR WITH TAG DATED 1986
S 17° W - 37.0'

LEGEND

- SET 5/8" X 24" REBAR WITH 1 1/4" YELLOW PLASTIC CAP (KLEIN & ASSOC. PLS 59002)
- SET 5/8" X 24" REBAR WITH 1 1/4" YELLOW PLASTIC CAP (KITZ 1853)
- ⊙ FOUND MONUMENT OF RECORD, SEE CORNER NOTES
- COMPUTED POINT, NOT MONUMENTED
- ⊠ FOUND QUARTER CORNER SEE CORNER NOTES
- ⊠ FOUND SECTION CORNER SEE CORNER NOTES
- ⊠ COMPUTED QUARTER CORNER
- ⊠ COMPUTED SECTION CORNER
- ⊠ POINT NUMBER
- RM REFERENCE MONUMENT
- PROPOSED ALIGNMENT
- TEMPORARY CONSTRUCTION EASEMENT
- TEMPORARY WORK AREA

REGISTERED PROFESSIONAL LAND SURVEYOR
JAMES M. KLEIN
OREGON
JULY 13, 2009
RICHARD R. KITZ
1853
Expires 5-30-2015

REGISTERED PROFESSIONAL LAND SURVEYOR
James M. Klein
OREGON
JULY 13, 2009
RICHARD R. KITZ
1853
Expires 5-30-2015

EASTSIDE CONSULTANTS, INC.
ENGINEERS-SURVEYORS
1202 N.W. HALL ST., SUITE 117
PORTLAND, OREGON 97208
PHONE: 503-288-2222
FAX: 503-288-2078

Klein & Associates, Inc.
ENGINEERING • SURVEYING • PLANNING
1411 139th Street • Hood River, OR 97031
TEL 541-386-3322 • FAX 541-386-2515

PACIFIC CONNECTOR GAS PIPELINE PROJECT
PACIFIC CONNECTOR GAS PIPELINE, LP
RECORD OF SURVEY
SECTION 21
TOWNSHIP 30 SOUTH, RANGE 3 WEST, W.M.
DOUGLAS COUNTY OREGON

Pacific Connector GAS PIPELINE

DRAWN BY: LIS	DATE: 09-02-2014	ISSUED FOR BID:	SCALE: 1" = 200'
CHECKED BY: JK	DATE: 09-23-2014	ISSUED FOR CONSTRUCTION:	
APPROVED BY: JK	DATE: 09-23-2014	DRAWING NUMBER:	SHEET 3 OF 5