

RECORD OF SURVEY

LOCATED IN
TOWNSHIP 30 SOUTH, RANGE 3 WEST, W.M.
DOUGLAS COUNTY, OREGON

FILED
Date: 10-14-2014 By: JC
This survey consists of
Map: M 166-19 A-C
Narrative:
Corner Rpt:
DOUGLAS COUNTY
SURVEYOR

CORNER NOTES:

(140414)
NORTHWEST CORNER SECTIONS 6
FOUND 2-1/2" BRASS CAP
STAMPED COUNTY SURVEYOR OFFICE 1962
BT REFERENCES:
1) 22" FIR WITH BLM TAG DATED 8/57
N 52-3/4' E - 19.5'
2) 13" CEDAR SET TAG DATED 11/13
S 23° E - 31.45' TO NAIL SIDE CENTER
3) 8.2" CEDAR SET TAG DATED 11/13
S 36° W - 23.3' TO NAIL SIDE CENTER
4) 16.5" CEDAR SET TAG DATED 11/13
N 78° W - 18.55' TO NAIL SIDE CENTER

(140429)
NORTHEAST CORNER SECTION 6
FOUND 2-1/2" BRASS CAP
STAMPED COUNTY SURVEYOR OFFICE 1962
BT REFERENCES:
1) 18.5" CEDAR WITH TAG DATED 11/62
N 60° E - 21' TO NAIL SIDE CENTER
2) 29.5" FIR WITH TAG DATED 8/56
S 30° E - 32.0' TO NAIL SIDE CENTER
3) 44" STUMP 6 FT. TALL WITH TAG DATED 8/56
S 65° W - 25.0'
4) 24" FIR WITH SET TAG DATED 11/13
N 42° W - 55.8' TO NAIL SIDE CENTER

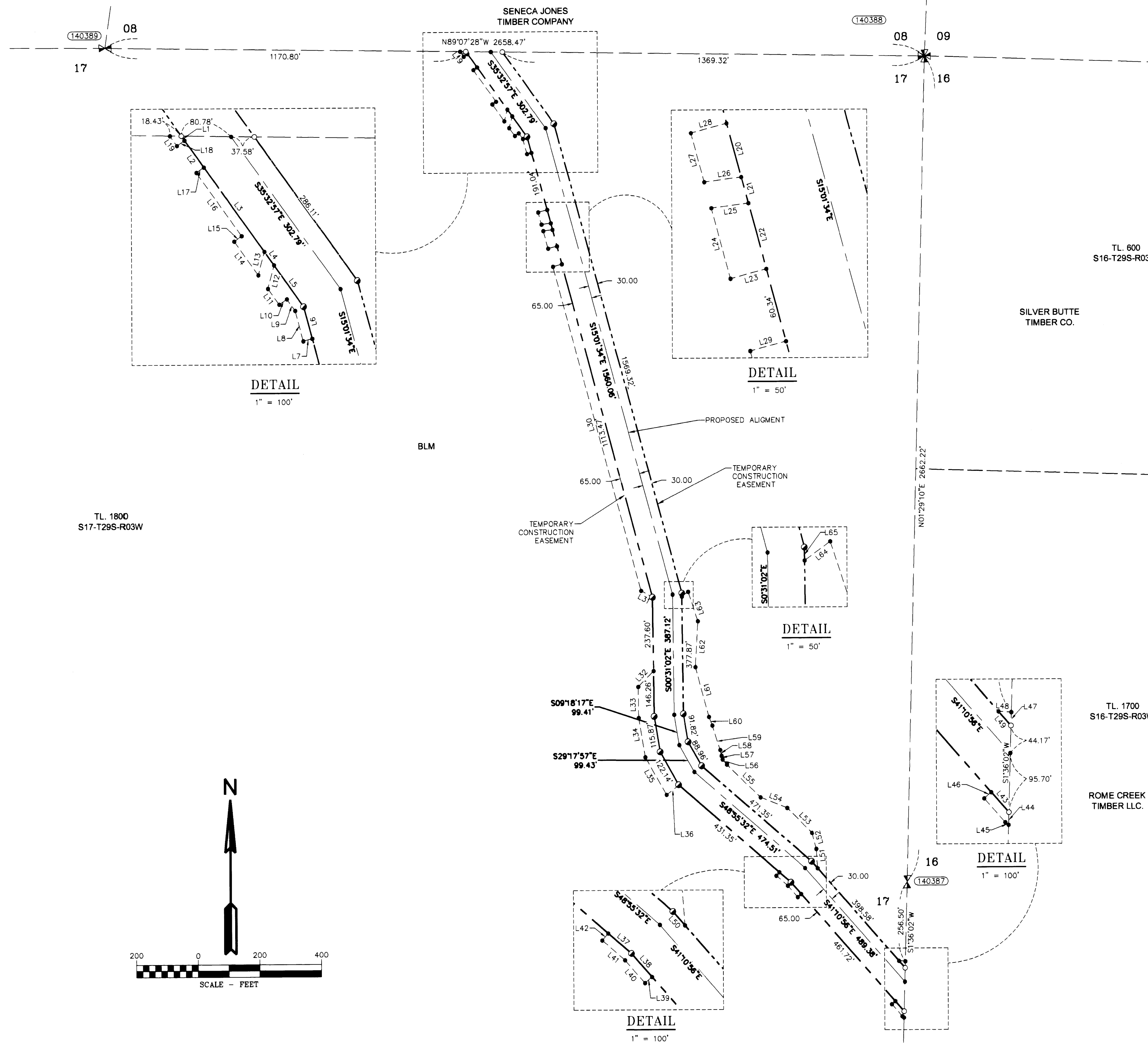
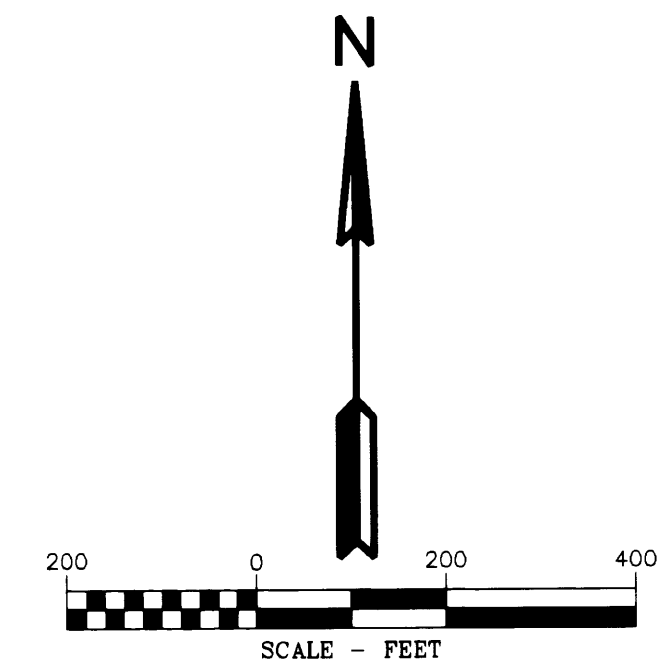
(140389)
NORTH 1/4 CORNER SECTIONS 17
FOUND 2-1/2" BRASS CAP
STAMPED COUNTY SURVEYOR OFFICE 1963
BT REFERENCES:
1) 11" FIR WITH TAG DATED 9/07
S 24° W - 20.8' TO NAIL SIDE CENTER
2) 29" FIR WITH BLM TAG DATED 9/63
N 43° W - 40.3' TO NAIL SIDE CENTER

(140386)
NORTHEAST CORNER SECTION 17
FOUND 2-1/2" BRASS CAP
STAMPED COUNTY SURVEYOR OFFICE 1966
BT REFERENCES:
1) 31" FIR WITH TAG DATED 1/57
N 15° E - 35' TO NAIL SIDE CENTER
2) 16.2" FIR WITH TAG NOT MARKED
S 40° W - NOT ABLE TO MEASURE DISTANCE
DUE TO STEEP SLOPE AND FALLEN TREES
3) BT HAS FALLEN DOWN, TAG DATED 1/57
N 56° E - NO DISTANCE GIVEN AND NOT MEASURED
4) 17.5" CEDAR WITH SET TAG DATED 09/07
N 25° W - 8.6' TO NAIL SIDE CENTER

(140387)
EAST 1/4 CORNER SECTIONS 17
FOUND 2-1/2" BRASS CAP
STAMPED COUNTY SURVEYOR OFFICE 1964
BT REFERENCES:
1) 15.3" FIR WITH TAG DATED 11/04
S 83-1/2° E - 39.9' TO NAIL SIDE CENTER
2) 19.4" SNAG WITH TAG DATED 11/04
S 10-1/2° W - 56.2'
3) 13.6" FIR WITH TAG DATED 11/04
N 23° W - 12.8' TO NAIL SIDE CENTER
4) 18" SNAG 4 FT. TALL WITH TAG DATED 6/64
N 77° W - 22.0'

LEGEND

- SET 5/8" X 24" REBAR WITH 1 1/4" YELLOW PLASTIC CAP (KLEIN & ASSOC. PLS 59002)
- SET 5/8" X 24" REBAR WITH 1 1/4" YELLOW PLASTIC CAP (KITZ 1853)
- ⊙ FOUND MONUMENT OF RECORD, SEE CORNER NOTES
- COMPUTED POINT, NOT MONUMENTED
- ⊠ FOUND QUARTER CORNER, SEE CORNER NOTES
- ⊠ FOUND SECTION CORNER, SEE CORNER NOTES
- ⊠ COMPUTED QUARTER CORNER
- ⊠ COMPUTED SECTION CORNER
- ⊙ POINT NUMBER
- RM REFERENCE MONUMENT
- PROPOSED ALIGNMENT
- TEMPORARY CONSTRUCTION EASEMENT
- TEMPORARY WORK AREA



AREA SECTION 17

TEMPORARY CONSTRUCTION EASEMENT	7.51 ACRES
TEMPORARY WORK AREA	2.85 ACRES

LINE TABLE

Line #	Direction	Length	Line #	Direction	Length
L1	S35°32'57"E	8.78	L34	S9°20'38"E	128.50
L2	N35°32'57"W	53.46	L35	S29°17'56"E	139.60
L3	S35°32'57"E	167.81	L36	N52°42'45"E	50.98
L4	S35°32'57"E	26.80	L37	S48°55'32"E	50.00
L5	S35°32'57"E	82.13	L38	S41°10'56"E	50.00
L6	S15°01'34"E	53.44	L39	N48°49'01"E	15.00
L7	N74°58'27"E	15.00	L40	S41°10'59"E	48.98
L8	S15°01'35"E	50.72	L41	S48°55'40"E	48.98
L9	S35°32'57"E	23.11	L42	S41°04'20"W	15.00
L10	N54°27'03"E	15.00	L43	S41°10'56"E	43.50
L11	S35°32'57"E	31.51	L44	S1°30'49"W	20.14
L12	S14°52'03"W	38.93	L45	N52°08'52"W	6.96
L13	N14°52'03"E	38.93	L46	N48°49'01"E	15.00
L14	S35°32'57"E	66.90	L47	N1°36'02"E	21.73
L15	S54°27'03"W	15.00	L48	S86°10'59"E	20.85
L16	S35°32'57"E	125.71	L49	S41°10'56"E	30.70
L17	S54°27'03"W	15.00	L50	N41°11'50"W	29.72
L18	N54°27'03"E	15.00	L51	S3°55'40"E	62.25
L19	S35°03'00"E	19.73	L52	S14°30'07"E	53.55
L20	S15°01'34"E	45.02	L53	S44°49'09"E	113.98
L21	S15°01'34"E	21.72	L54	S66°11'55"E	93.10
L22	S15°01'34"E	54.98	L55	S45°32'35"E	151.74
L23	N74°58'27"E	30.00	L56	S40°09'22"E	21.29
L24	S15°01'34"E	58.92	L57	S16°19'06"E	12.67
L25	S82°27'53"W	30.25	L58	S12°10'18"E	19.29
L26	N82°27'54"E	30.25	L59	S17°46'17"E	83.30
L27	S15°01'34"E	41.08	L60	S20°53'52"E	29.94
L28	S74°58'29"W	30.00	L61	S15°06'04"E	165.90
L29	S74°58'28"W	30.00	L62	S3°20'30"W	148.29
L30	S15°01'33"E	1083.46	L63	S16°07'55"E	100.02
L31	S60°11'11"E	42.43	L64	N53°29'18"E	25.85
L32	S44°40'20"W	70.88	L65	S0°31'05"E	10.76
L33	S0°37'26"E	100.19			

REGISTERED PROFESSIONAL LAND SURVEYOR
Richard R. Kitz
OMEGA
JULY 15, 1959
RICHARD R. KITZ
1853
Expires 6-30-2015

REGISTERED PROFESSIONAL LAND SURVEYOR
James M. Klein
OREGON
JULY 12, 2006
JAMES M. KLEIN
59002
Expires 6-30-2015

EASTSIDE CONSULTANTS, INC.
ENGINEERS-SURVEYORS
1329 N.W. HALL ST., SUITE 100
GRESHAM, OREGON 97030
PHONE: (503) 662-4477
FAX: (503) 662-4478

Klein & Associates, Inc.
ENGINEERING-SURVEYING-PLANNING
1411 13th Street • Hood River, OR 97031
TEL: 541-386-3322 • FAX: 541-386-2515

PACIFIC CONNECTOR GAS PIPELINE PROJECT
PACIFIC CONNECTOR GAS PIPELINE, LP
RECORD OF SURVEY
SECTION 17
TOWNSHIP 30 SOUTH, RANGE 3 WEST, W.M.
DOUGLAS COUNTY OREGON

Pacific Connector
GAS PIPELINE

DRAWN BY: LJS	DATE: 09-02-2014	ISSUED FOR BID:	SCALE: 1" = 200'
CHECKED BY: JK	DATE: 09-23-2014	ISSUED FOR CONSTRUCTION:	
APPROVED BY: JK	DATE: 09-23-2014	DRAWING NUMBER:	SHEET 2 OF 5