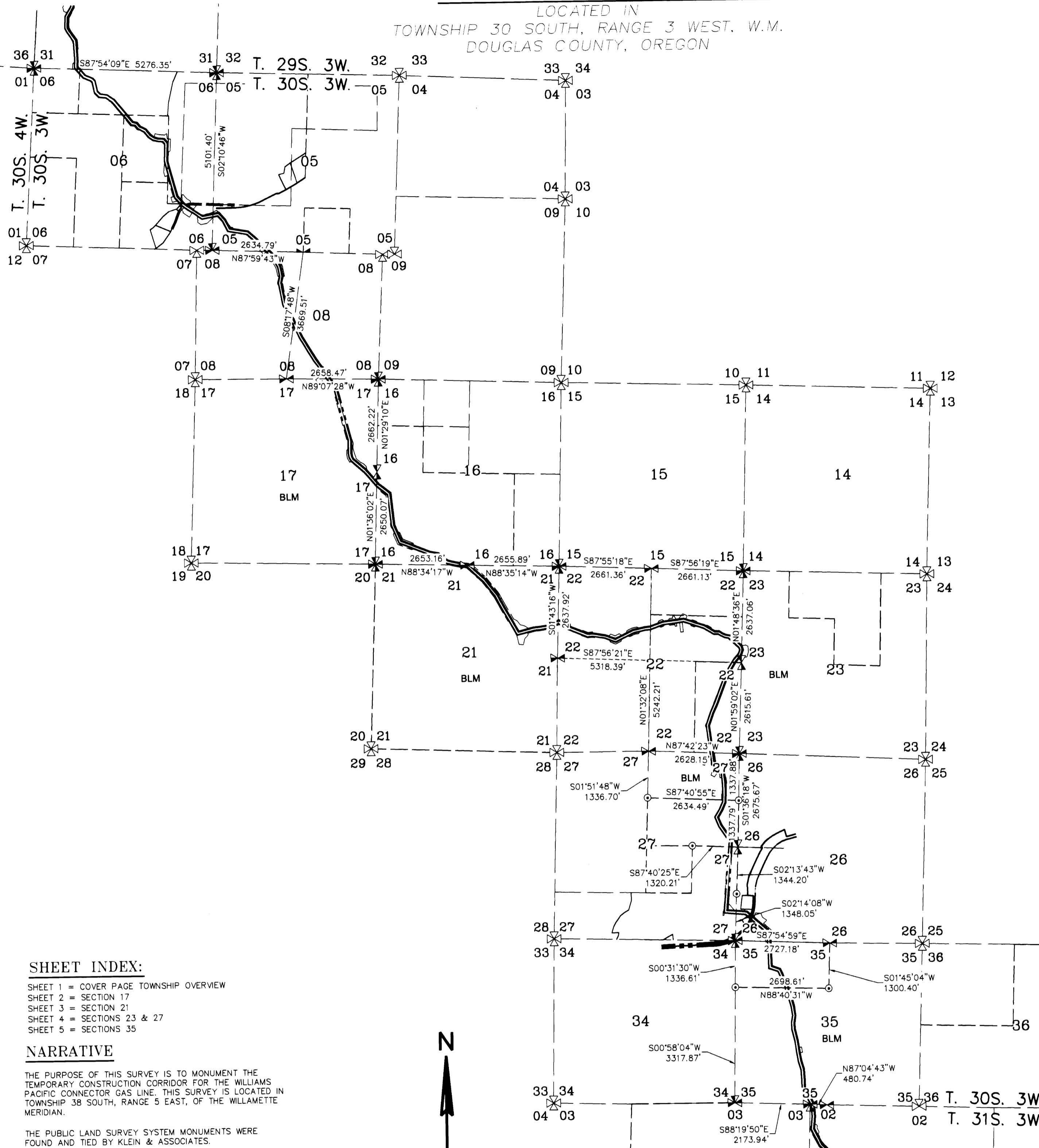


# RECORD OF SURVEY

LOCATED IN  
TOWNSHIP 30 SOUTH, RANGE 3 WEST, W.M.  
DOUGLAS COUNTY, OREGON

FILED  
Date: 10-14-2014 By: J.C.  
This survey consists of:  
Map: M166-19A-E  
Narrative:  
Corner Rpt:  
DOUGLAS COUNTY  
SURVEYOR

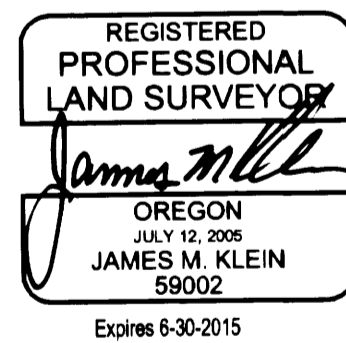


### LEGEND

- SET 5/8" X 24" REBAR WITH 1/4" YELLOW PLASTIC CAP (KLEIN & ASSOC. PLS 59002)
- SET 5/8" X 24" REBAR WITH 1/4" YELLOW PLASTIC CAP (KITZ 1853)
- ⊙ FOUND MONUMENT OF RECORD, SEE CORNER NOTES
- COMPUTED POINT, NOT MONUMENTED
- ⊗ FOUND QUARTER CORNER, SEE CORNER NOTES
- ⊗ FOUND SECTION CORNER, SEE CORNER NOTES
- ⊗ COMPUTED QUARTER CORNER
- ⊗ COMPUTED SECTION CORNER
- POINT NUMBER
- RM REFERENCE MONUMENT
- PROPOSED ALIGNMENT
- TEMPORARY CONSTRUCTION EASEMENT
- TEMPORARY WORK AREA

### SURVEYOR'S CERTIFICATE

I, JAMES M. KLEIN BEING DULY SWORN AS A PROFESSIONAL LAND SURVEYOR IN THE STATE OF OREGON DO HEREBY CERTIFY THAT THIS MAP CORRECTLY REPRESENTS A SURVEY CONDUCTED UNDER MY DIRECT SUPERVISION IN CONFORMANCE WITH THE REQUIREMENTS OF THE SURVEY RECORDING LAW, AS ESTABLISHED BY ORS CHAPTER 209, AND HAVE SET THE PROPER MONUMENTS AS REFERENCED IN THE LEGEND BY MY REGISTRATION NUMBER AND SEAL.



FURTHERMORE, I APPROVE THE LOCATION OF THE MONUMENTS AS DEPICTED ON THIS SURVEY DRAWING TO BE IN THEIR PROPER LOCATION.

James M. Klein  
JAMES M. KLEIN PLS. 59002

### SURVEYOR'S CERTIFICATE

I, RICHARD R. KITZ BEING DULY SWORN AS A PROFESSIONAL LAND SURVEYOR IN THE STATE OF OREGON DO HEREBY CERTIFY THAT THIS MAP CORRECTLY REPRESENTS A SURVEY CONDUCTED UNDER MY DIRECT SUPERVISION IN CONFORMANCE WITH THE REQUIREMENTS OF THE SURVEY RECORDING LAW, AS ESTABLISHED BY ORS CHAPTER 209, AND HAVE SET THE PROPER MONUMENTS AS REFERENCED IN THE LEGEND BY MY REGISTRATION NUMBER AND SEAL.



FURTHERMORE, I APPROVE THE LOCATION OF THE MONUMENTS AS DEPICTED ON THIS SURVEY DRAWING TO BE IN THEIR PROPER LOCATION.

Richard R. Kitz  
RICHARD R. KITZ PLS. 1853

### SHEET INDEX:

- SHEET 1 = COVER PAGE TOWNSHIP OVERVIEW
- SHEET 2 = SECTION 17
- SHEET 3 = SECTION 21
- SHEET 4 = SECTIONS 23 & 27
- SHEET 5 = SECTIONS 35

### NARRATIVE

THE PURPOSE OF THIS SURVEY IS TO MONUMENT THE TEMPORARY CONSTRUCTION CORRIDOR FOR THE WILLIAMS PACIFIC CONNECTOR GAS LINE. THIS SURVEY IS LOCATED IN TOWNSHIP 30 SOUTH, RANGE 3 EAST, OF THE WILLAMETTE MERIDIAN.

THE PUBLIC LAND SURVEY SYSTEM MONUMENTS WERE FOUND AND TIED BY KLEIN & ASSOCIATES.

THE TEMPORARY CONSTRUCTION EASEMENT WAS SURVEYED AND MONUMENTED BY THE EASTSIDE CONSULTANTS, INC.

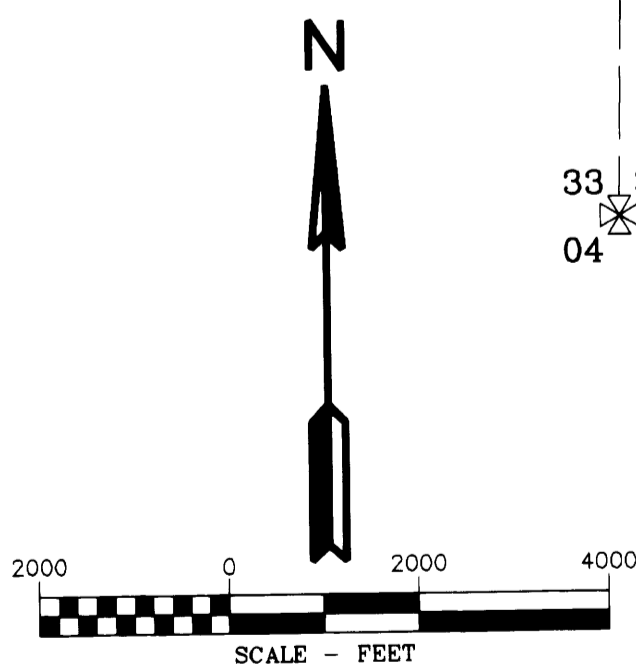
THE INTERSECTION OF THE TEMPORARY CONSTRUCTION EASEMENT AND THE FEDERAL LANDS WERE MONUMENTED BY KLEIN & ASSOCIATES.

### SCALE FACTOR NOTE

THE DISTANCES SHOWN ON THIS SURVEY ARE GRID DISTANCES.  
THE COMBINED SCALE FACTOR = 0.999838282

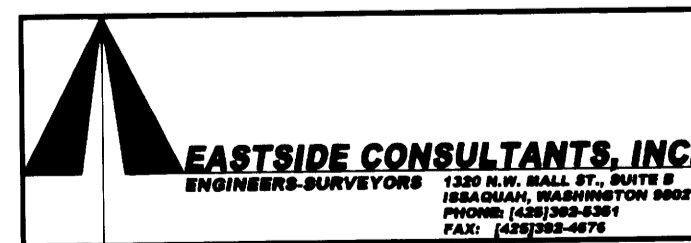
TO CONVERT FROM GRID TO GROUND MULTIPLY THE DISTANCE BY 1.000161745.

EXAMPLE: 300.00' GRID DISTANCE  
300.00' x 1.000161745 = 300.05' GROUND DISTANCE.



### BASIS OF BEARINGS

OREGON STATE PLANE COORDINATE SYSTEM NAD 1983 (CONUS) OREGON SOUTH ZONE 3602 US SURVEY FOOT GRID NORTH



PACIFIC CONNECTOR GAS PIPELINE PROJECT PACIFIC CONNECTOR GAS PIPELINE, LP RECORD OF SURVEY				
TOWNSHIP 30 SOUTH, RANGE 3 WEST, W.M. DOUGLAS COUNTY OREGON				
DRAWN BY: LIS	DATE: 09-02-2014	ISSUED FOR BID:	SCALE: 1" = 200'	SHEET 1 OF 5
CHECKED BY: JK	DATE: 09-23-2014	ISSUED FOR CONSTRUCTION:		
APPROVED BY: JK	DATE: 09-23-2014	DRAWING NUMBER:		

# RECORD OF SURVEY

LOCATED IN  
TOWNSHIP 30 SOUTH, RANGE 3 WEST, W.M.  
DOUGLAS COUNTY, OREGON

FILED  
Date: 10-14-2014 By: JC  
This survey consists of:  
Map: M 166-19 A-C  
Narrative:  
Corner Rpt:  
DOUGLAS COUNTY  
SURVEYOR

### CORNER NOTES:

**(140414)**  
NORTHWEST CORNER SECTIONS 6  
FOUND 2-1/2" BRASS CAP  
STAMPED COUNTY SURVEYOR OFFICE 1962  
BT REFERENCES:  
1) 22" FIR WITH BLM TAG DATED 8/57  
N 52-3/4° E - 19.5'  
2) 13" CEDAR SET TAG DATED 11/13  
S 23° E - 31.45' TO NAIL SIDE CENTER  
3) 8.2" CEDAR SET TAG DATED 11/13  
S 36° W - 23.3' TO NAIL SIDE CENTER  
4) 16.5" CEDAR SET TAG DATED 11/13  
N 78° W - 18.55' TO NAIL SIDE CENTER

**(140429)**  
NORTHEAST CORNER SECTION 6  
FOUND 2-1/2" BRASS CAP  
STAMPED COUNTY SURVEYOR OFFICE 1962  
BT REFERENCES:  
1) 18.5" CEDAR WITH TAG DATED 11/62  
N 60° E - 21' TO NAIL SIDE CENTER  
2) 29.5" FIR WITH TAG DATED 8/56  
S 30° E - 32.0' TO NAIL SIDE CENTER  
3) 44" STUMP 6 FT. TALL WITH TAG DATED 8/56  
S 65° W - 25.0'  
4) 24" FIR WITH SET TAG DATED 11/13  
N 42° W - 55.8' TO NAIL SIDE CENTER

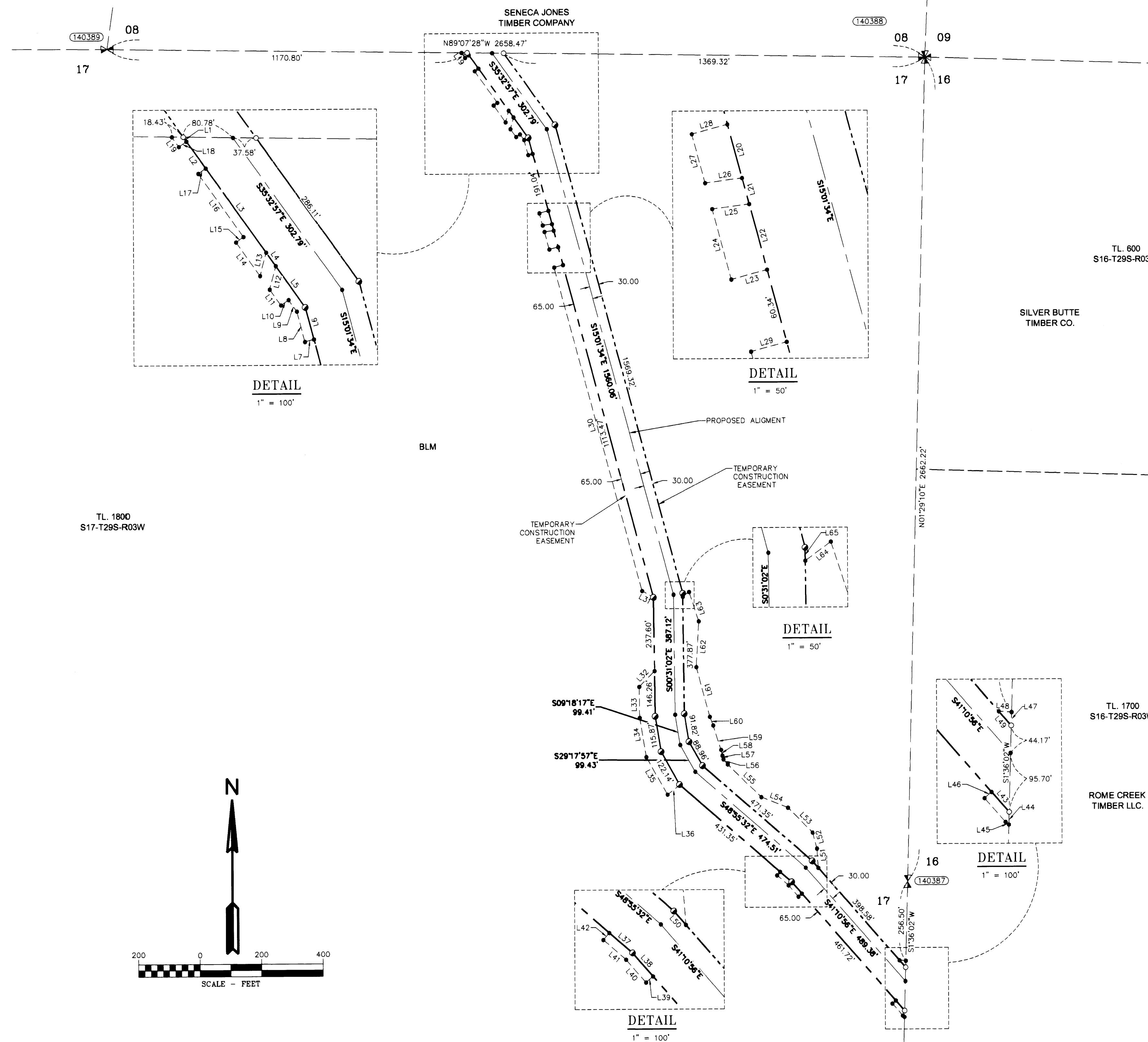
**(140389)**  
NORTH 1/4 CORNER SECTIONS 17  
FOUND 2-1/2" BRASS CAP  
STAMPED COUNTY SURVEYOR OFFICE 1963  
BT REFERENCES:  
1) 11" FIR WITH TAG DATED 9/07  
S 24° W - 20.8' TO NAIL SIDE CENTER  
2) 29" FIR WITH BLM TAG DATED 9/63  
N 43° W - 40.3' TO NAIL SIDE CENTER

**(140386)**  
NORTHEAST CORNER SECTION 17  
FOUND 2-1/2" BRASS CAP  
STAMPED COUNTY SURVEYOR OFFICE 1966  
BT REFERENCES:  
1) 31" FIR WITH TAG DATED 1/57  
N 15° E - 35' TO NAIL SIDE CENTER  
2) 16.2" FIR WITH TAG NOT MARKED  
S 40° W - NOT ABLE TO MEASURE DISTANCE  
DUE TO STEEP SLOPE AND FALLEN TREES  
3) BT HAS FALLEN DOWN, TAG DATED 1/57  
N 56° E - NO DISTANCE GIVEN AND NOT MEASURED  
4) 17.5" CEDAR WITH SET TAG DATED 09/07  
N 25° W - 8.6' TO NAIL SIDE CENTER

**(140387)**  
EAST 1/4 CORNER SECTIONS 17  
FOUND 2-1/2" BRASS CAP  
STAMPED COUNTY SURVEYOR OFFICE 1964  
BT REFERENCES:  
1) 15.3" FIR WITH TAG DATED 11/04  
S 83-1/2° E - 39.9' TO NAIL SIDE CENTER  
2) 19.4" SNAG WITH TAG DATED 11/04  
S 10-1/2° W - 56.2'  
3) 13.6" FIR WITH TAG DATED 11/04  
N 23° W - 12.8' TO NAIL SIDE CENTER  
4) 18" SNAG 4 FT. TALL WITH TAG DATED 6/64  
N 77° W - 22.0'

### LEGEND

- SET 5/8" X 24" REBAR WITH 1 1/4" YELLOW PLASTIC CAP (KLEIN & ASSOC. PLS 59002)
- SET 5/8" X 24" REBAR WITH 1 1/4" YELLOW PLASTIC CAP (KITZ 1853)
- ⊙ FOUND MONUMENT OF RECORD, SEE CORNER NOTES
- COMPUTED POINT, NOT MONUMENTED
- ⊠ FOUND QUARTER CORNER, SEE CORNER NOTES
- ⊠ FOUND SECTION CORNER, SEE CORNER NOTES
- ⊠ COMPUTED QUARTER CORNER
- ⊠ COMPUTED SECTION CORNER
- ⊠ POINT NUMBER
- RM REFERENCE MONUMENT
- PROPOSED ALIGNMENT
- TEMPORARY CONSTRUCTION EASEMENT
- TEMPORARY WORK AREA



AREA SECTION 17

TEMPORARY CONSTRUCTION EASEMENT	7.51 ACRES
TEMPORARY WORK AREA	2.85 ACRES

### LINE TABLE

Line #	Direction	Length	Line #	Direction	Length
L1	S35°32'57"E	8.78	L34	S9°20'38"E	128.50
L2	N35°32'57"W	53.46	L35	S29°17'56"E	139.60
L3	S35°32'57"E	167.81	L36	N52°42'45"E	50.98
L4	S35°32'57"E	26.80	L37	S48°55'32"E	50.00
L5	S35°32'57"E	82.13	L38	S41°10'56"E	50.00
L6	S15°01'34"E	53.44	L39	N48°49'01"E	15.00
L7	N74°58'27"E	15.00	L40	S41°10'59"E	48.98
L8	S15°01'35"E	50.72	L41	S48°55'40"E	48.98
L9	S35°32'57"E	23.11	L42	S41°04'20"W	15.00
L10	N54°27'03"E	15.00	L43	S41°10'56"E	43.50
L11	S35°32'57"E	31.51	L44	S1°30'49"W	20.14
L12	S14°52'03"W	38.93	L45	N52°08'52"W	6.96
L13	N14°52'03"E	38.93	L46	N48°49'01"E	15.00
L14	S35°32'57"E	66.90	L47	N1°36'02"E	21.73
L15	S54°27'03"W	15.00	L48	S86°10'59"E	20.85
L16	S35°32'57"E	125.71	L49	S41°10'56"E	30.70
L17	S54°27'03"W	15.00	L50	N41°11'50"W	29.72
L18	N54°27'03"E	15.00	L51	S3°55'40"E	62.25
L19	S35°03'00"E	19.73	L52	S14°30'07"E	53.55
L20	S15°01'34"E	45.02	L53	S44°49'09"E	113.98
L21	S15°01'34"E	21.72	L54	S66°11'55"E	93.10
L22	S15°01'34"E	54.98	L55	S45°32'35"E	151.74
L23	N74°58'27"E	30.00	L56	S40°09'22"E	21.29
L24	S15°01'34"E	58.92	L57	S16°19'06"E	12.67
L25	S82°27'53"W	30.25	L58	S12°10'18"E	19.29
L26	N82°27'54"E	30.25	L59	S17°46'17"E	83.30
L27	S15°01'34"E	41.08	L60	S20°53'52"E	29.94
L28	S74°58'29"W	30.00	L61	S15°06'04"E	165.90
L29	S74°58'28"W	30.00	L62	S3°20'30"W	148.29
L30	S15°01'33"E	1083.46	L63	S16°07'55"E	100.02
L31	S60°11'11"E	42.43	L64	N53°29'18"E	25.85
L32	S44°40'20"W	70.88	L65	S0°31'05"E	10.76
L33	S0°37'26"E	100.19			

REGISTERED PROFESSIONAL LAND SURVEYOR  
*Richard R. Kitz*  
OMEGA  
JULY 15, 1979  
RICHARD R. KITZ  
1853  
Expires 6-30-2015

REGISTERED PROFESSIONAL LAND SURVEYOR  
*James M. Klein*  
OREGON  
JULY 12, 2006  
JAMES M. KLEIN  
59002  
Expires 6-30-2015

**EASTSIDE CONSULTANTS, INC.**  
ENGINEERS-SURVEYORS  
1320 N.W. HALL ST., SUITE 100  
GRESHAM, OREGON 97030  
PHONE: (503) 252-4478  
FAX: (503) 252-4478

**Klein & Associates, Inc.**  
ENGINEERING-SURVEYING-PLANNING  
1411 13th Street • Hood River, OR 97031  
TEL: 541-386-3322 • FAX: 541-386-2515

PACIFIC CONNECTOR GAS PIPELINE PROJECT  
PACIFIC CONNECTOR GAS PIPELINE, LP  
RECORD OF SURVEY  
SECTION 17  
TOWNSHIP 30 SOUTH, RANGE 3 WEST, W.M.  
DOUGLAS COUNTY OREGON

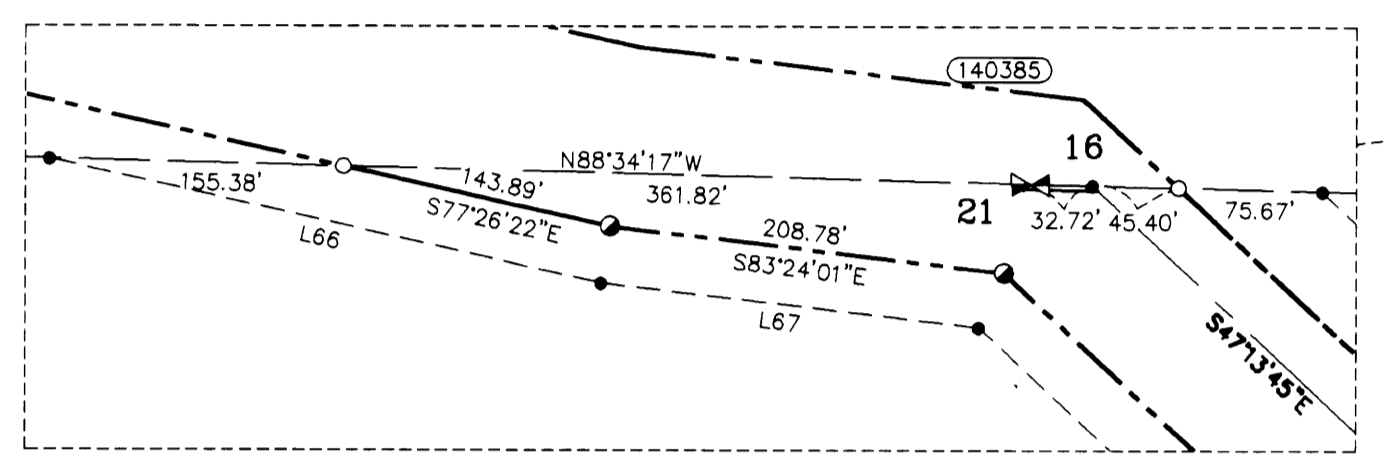
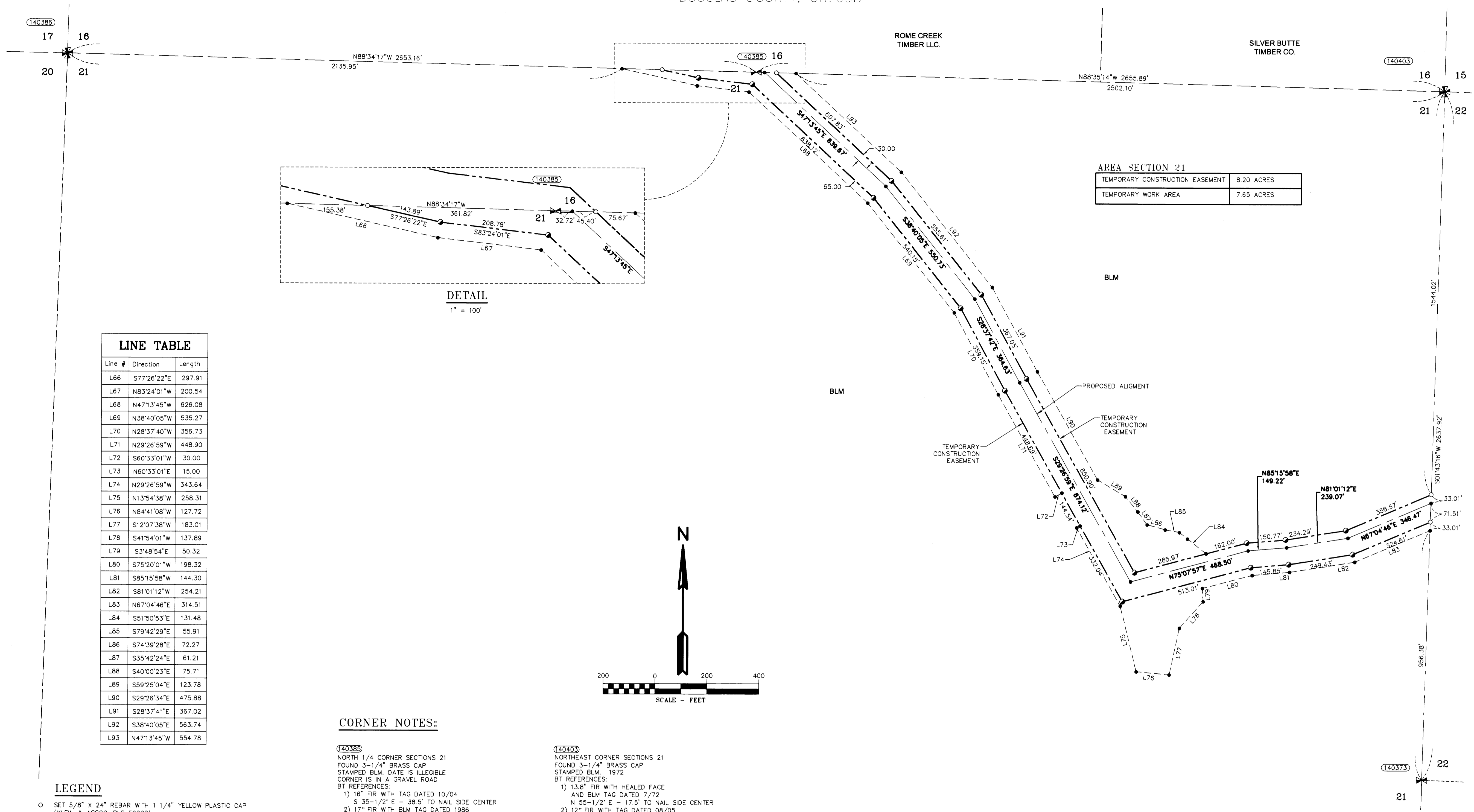
Pacific Connector  
GAS PIPELINE

DRAWN BY: LJS	DATE: 09-02-2014	ISSUED FOR BID:	SCALE: 1" = 200'
CHECKED BY: JK	DATE: 09-23-2014	ISSUED FOR CONSTRUCTION:	
APPROVED BY: JK	DATE: 09-23-2014	DRAWING NUMBER:	SHEET 2 OF 5

# RECORD OF SURVEY

LOCATED IN  
TOWNSHIP 30 SOUTH, RANGE 3 WEST, W.M.  
DOUGLAS COUNTY, OREGON

FILED  
Date: 10-14-2014 by: JC  
This survey consists of:  
Map: M166-19A-E  
Narrative:  
Corner Rpt:  
DOUGLAS COUNTY SURVEYOR



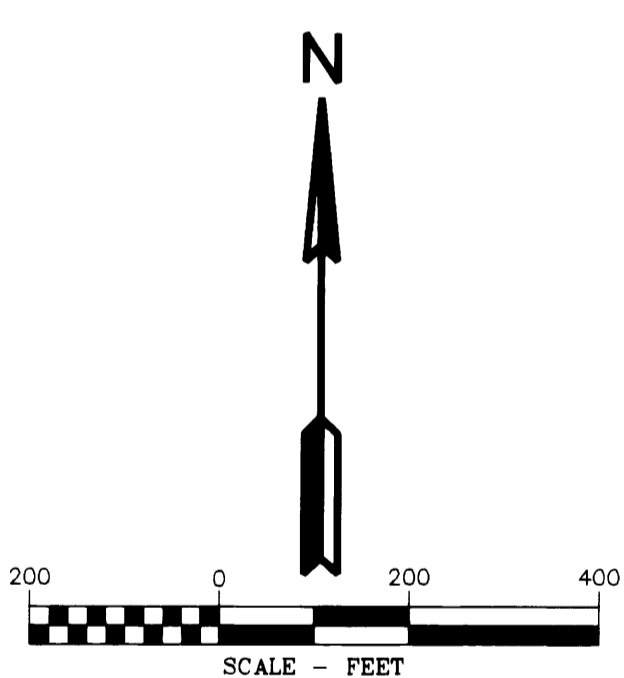
DETAIL  
1" = 100'

AREA SECTION 21

TEMPORARY CONSTRUCTION EASEMENT	8.20 ACRES
TEMPORARY WORK AREA	7.65 ACRES

### LINE TABLE

Line #	Direction	Length
L66	S77°26'22"E	297.91
L67	N83°24'01"W	200.54
L68	N47°13'45"W	626.08
L69	N38°40'05"W	535.27
L70	N28°37'40"W	356.73
L71	N29°26'59"W	448.90
L72	S60°33'01"W	30.00
L73	N60°33'01"E	15.00
L74	N29°26'59"W	343.64
L75	N13°54'38"W	258.31
L76	N84°41'08"W	127.72
L77	S12°07'38"W	183.01
L78	S41°54'01"W	137.89
L79	S3°48'54"E	50.32
L80	S75°20'01"W	198.32
L81	S85°15'58"W	144.30
L82	S81°01'12"W	254.21
L83	N67°04'46"E	314.51
L84	S51°50'53"E	131.48
L85	S79°42'29"E	55.91
L86	S74°39'28"E	72.27
L87	S35°42'24"E	61.21
L88	S40°00'23"E	75.71
L89	S59°25'04"E	123.78
L90	S29°26'34"E	475.88
L91	S28°37'41"E	367.02
L92	S38°40'05"E	563.74
L93	N47°13'45"W	554.78



### CORNER NOTES:

- (140385) NORTH 1/4 CORNER SECTIONS 21  
FOUND 3-1/4" BRASS CAP  
STAMPED BLM, DATE IS ILLEGIBLE  
CORNER IS IN A GRAVEL ROAD  
BT REFERENCES:  
1) 16" FIR WITH TAG DATED 10/04  
S 35-1/2° E - 38.5' TO NAIL SIDE CENTER  
2) 17" FIR WITH BLM TAG DATED 1986  
S 0° W - 8.0'  
3) 28" FIR WITH BLM TAG  
S 44° W - 61.4'  
4) 28.5" STUMP 6 FT. TALL WITH TAG DATED 7/72  
N 33-1/2° W - 58.1'
- (140385) NORTHWEST CORNER SECTION 21  
FOUND 3-1/4" BRASS CAP  
STAMPED BLM, 1972  
BT REFERENCES:  
1) 9" FIR WITH TAG DATED 10/04  
S 31-1/2° W - 13.1'  
2) 24" MAPLE WITH TAG DATED 9-97  
S 51° W - 44.4'  
3) 14" FIR WITH TAG DATED 10/04  
N 83-1/2° W - 83.7'
- (140403) NORTHEAST CORNER SECTIONS 21  
FOUND 3-1/4" BRASS CAP  
STAMPED BLM, 1972  
BT REFERENCES:  
1) 13.8" FIR WITH HEALED FACE  
AND BLM TAG DATED 7/72  
N 55-1/2° E - 17.5' TO NAIL SIDE CENTER  
2) 12" FIR WITH TAG DATED 08/05  
S 40-1/2° E - 9.3' TO NAIL SIDE CENTER  
3) 13" FIR WITH HEALED FACE  
AND BLM TAG DATED 08/72  
S 28° W - 15.2' TO NAIL SIDE CENTER  
4) 12.3" FIR WITH HEALED FACE  
AND BLM TAG DATED 07/72  
N 36-1/2° W - 31.7' TO NAIL SIDE CENTER
- (140373) EAST 1/4 CORNER SECTION 21  
FOUND 2-1/2" BRASS CAP  
STAMPED COUNTY SURVEYORS OFFICE 1963  
BT REFERENCES:  
1) 23.5" FIR WITH HEALED FACE (ORIGINAL BT)  
WITH TAG DATED 1986  
N 42° E - 5.9'  
2) 48" FIR WITH HEALED FACE  
AND TAG DATED 7/72  
S 55° E - 17.5'  
3) 34" FIR WITH TAG DATED 1986  
S 17° W - 37.0'

### LEGEND

- SET 5/8" X 24" REBAR WITH 1 1/4" YELLOW PLASTIC CAP (KLEIN & ASSOC. PLS 59002)
- SET 5/8" X 24" REBAR WITH 1 1/4" YELLOW PLASTIC CAP (KITZ 1853)
- ⊙ FOUND MONUMENT OF RECORD, SEE CORNER NOTES
- COMPUTED POINT, NOT MONUMENTED
- ⊠ FOUND QUARTER CORNER SEE CORNER NOTES
- ⊠ FOUND SECTION CORNER SEE CORNER NOTES
- ⊠ COMPUTED QUARTER CORNER
- ⊠ COMPUTED SECTION CORNER
- (100000) POINT NUMBER
- RM REFERENCE MONUMENT
- PROPOSED ALIGNMENT
- TEMPORARY CONSTRUCTION EASEMENT
- TEMPORARY WORK AREA

REGISTERED PROFESSIONAL LAND SURVEYOR  
JAMES M. KLEIN  
OREGON  
JULY 13, 2009  
RICHARD R. KITZ  
1853  
Expires 5-30-2015

REGISTERED PROFESSIONAL LAND SURVEYOR  
James M. Klein  
OREGON  
JULY 13, 2009  
JAMES M. KLEIN  
59002  
Expires 5-30-2015

EASTSIDE CONSULTANTS, INC.  
ENGINEERS-SURVEYORS  
1202 N.W. 34th St., Suite 117  
Portland, Oregon 97228  
Phone: (503) 253-2277  
Fax: (503) 253-2078

Klein & Associates, Inc.  
ENGINEERING • SURVEYING • PLANNING  
1411 139th Street • Hood River, OR 97031  
TEL 541-386-3322 • FAX 541-386-2515

PACIFIC CONNECTOR GAS PIPELINE PROJECT  
PACIFIC CONNECTOR GAS PIPELINE, LP  
RECORD OF SURVEY  
SECTION 21  
TOWNSHIP 30 SOUTH, RANGE 3 WEST, W.M.  
DOUGLAS COUNTY OREGON

DRAWN BY: LIS DATE: 09-02-2014 ISSUED FOR BID: SCALE: 1" = 200'  
CHECKED BY: JK DATE: 09-23-2014 ISSUED FOR CONSTRUCTION:  
APPROVED BY: JK DATE: 09-23-2014 DRAWING NUMBER: SHEET 3 OF 5

# RECORD OF SURVEY

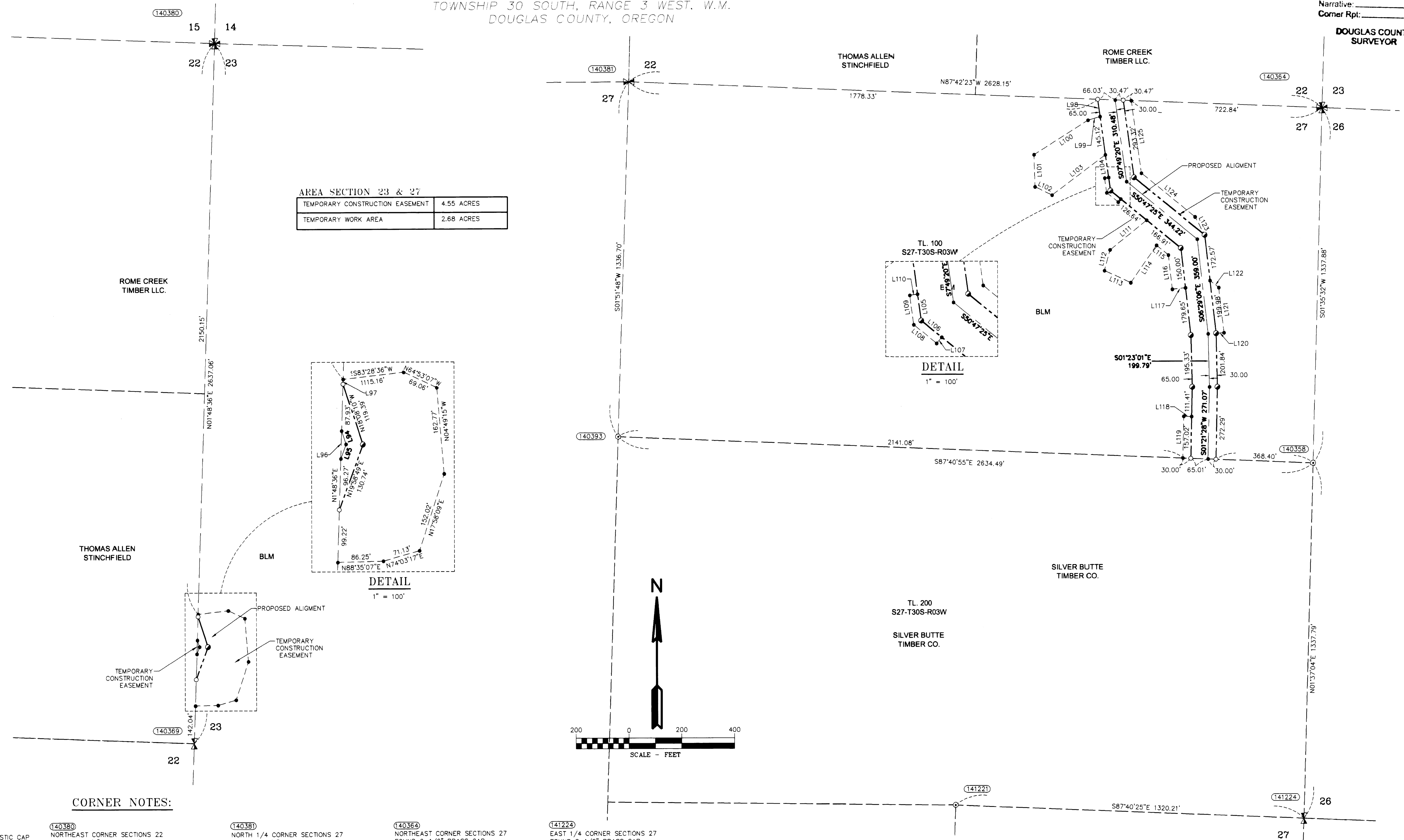
LOCATED IN  
TOWNSHIP 30 SOUTH, RANGE 3 WEST, W.M.  
DOUGLAS COUNTY, OREGON

FILED  
Date: 10-14-2014 By: J.C.  
This survey consists of  
Map: M1166-19A-E  
Narrative:  
Corner Rpt:

### LINE TABLE

Line #	Direction	Length
L94	S18°08'24"E	26.39
L95	S19°58'02"W	28.90
L96	N1°48'36"E	52.27
L97	N1°48'36"E	9.19
L98	S7°49'20"E	65.48
L99	S73°22'43"W	30.54
L100	S57°54'27"W	242.24
L101	S1°38'12"E	121.79
L102	S64°03'28"E	71.56
L103	N53°13'32"E	253.33
L104	S7°49'20"E	86.90
L105	S7°49'20"E	50.15
L106	S50°47'25"E	49.80
L107	N39°12'51"E	15.00
L108	S50°47'36"E	55.70
L109	S7°49'20"E	56.05
L110	S82°10'02"W	15.00
L111	N51°20'26"E	178.18
L112	N1°55'53"E	81.00
L113	N65°28'49"W	108.96
L114	S35°00'05"W	170.87
L115	N50°47'25"W	57.83
L116	N6°29'06"W	129.60
L117	S83°33'29"W	50.00
L118	S88°40'32"E	30.00
L119	S1°21'28"W	156.50
L120	N86°03'58"E	30.03
L121	N6°29'06"W	171.28
L122	N51°26'30"W	42.46
L123	N27°53'31"W	77.10
L124	N50°47'25"W	261.79
L125	N7°49'20"W	276.16

AREA SECTION 23 & 27	
TEMPORARY CONSTRUCTION EASEMENT	4.55 ACRES
TEMPORARY WORK AREA	2.68 ACRES



### CORNER NOTES:

### LEGEND

- SET 5/8" X 24" REBAR WITH 1 1/4" YELLOW PLASTIC CAP (KLEIN & ASSOC. PLS 59002)
- SET 5/8" X 24" REBAR WITH 1 1/4" YELLOW PLASTIC CAP (KITZ 1853)
- ⊙ FOUND MONUMENT OF RECORD, SEE CORNER NOTES
- COMPUTED POINT, NOT MONUMENTED
- ⊙ FOUND QUARTER CORNER SEE CORNER NOTES
- ⊙ FOUND SECTION CORNER SEE CORNER NOTES
- ⊙ COMPUTED QUARTER CORNER
- ⊙ COMPUTED SECTION CORNER
- 100000 POINT NUMBER
- RM REFERENCE MONUMENT
- PROPOSED ALIGNMENT
- - - - - TEMPORARY CONSTRUCTION EASEMENT
- - - - - TEMPORARY WORK AREA

- (140380)**  
NORTHEAST CORNER SECTIONS 22  
FOUND 2-1/2" BRASS CAP  
STAMPED COUNTY SURVEYOR 1977  
BT REFERENCES:  
1) 11" FIR WITH VISIBLE SCRIBES AND BLM TAG DATED 2008  
N 49-3/4" E - 27.7" TO NAIL SIDE CENTER  
2) 7" FIR WITH VISIBLE SCRIBES AND BLM TAG DATED 2008  
S 46-1/4" E - 32.2" TO NAIL SIDE CENTER  
3) 10" FIR WITH VISIBLE SCRIBES AND BLM TAG DATED 2008  
N 72-1/4" W - 16.0" TO NAIL SIDE CENTER
- (140389)**  
EAST 1/4 CORNER SECTION 22  
FOUND 2-1/2" BRASS CAP  
STAMPED COUNTY SURVEYORS OFFICE 1967  
BT REFERENCES:  
1) 20" PINE WITH HEALED FACE AND TAG DATED 9/87  
S 86' W - 13.8" TO NAIL SIDE CENTER  
2) 18" FIR WITH HEALED FACE AND TAG DATED 9-87  
S 41' E - 12.6" TO NAIL SIDE CENTER

- (140381)**  
NORTH 1/4 CORNER SECTIONS 27  
FOUND 1-1/4" IRON PIPE  
ACCEPTED AS 1/4 CORNER  
BT REFERENCES:  
1) 24.5" FIR WITH HEALED FACE AND TAG DATED 08/05  
S 35' E - 22.0'  
2) 16" HEMLOCK WITH VISIBLE SCRIBE AND TAG DATED 08/05  
S 83-1/2" W - 34.7'

- (140393)**  
CENTER-NORTH 1/16 CORNER SECTION 27  
FOUND 1-1/2" ALUMINUM CAP  
STAMPED PLS 1941, 2007  
BT REFERENCES:  
1) 30.5" FIR WITH TAG DATED 11/07  
N 3°45' W - 23.1" TO NAIL IN SIDE  
2) 11" FIR WITH TAG DATED 11/07  
N 82-3/4" W - 20.6" TO NAIL IN SIDE


- (140364)**  
NORTHEAST CORNER SECTIONS 27  
FOUND 2-1/2" BRASS CAP  
STAMPED COUNTY SURVEYORS OFFICE 1963  
BT REFERENCES:  
1) 10" FIR WITH TAG DATED 5/08  
N 44-1/2" E - 16.4"  
2) 34" RED FIR WITH TAG DATED 01/63  
S 39' E - 45.0'  
3) 22" CEDAR SNAG WITH TAG 1/63  
S 07' W - 54.8"  
4) 11" FIR WITH TAG DATED 05/08  
S 22-3/4" W - 18.9"  
5) 16.5" FIR WITH TAG DATED 05/08  
N 52-1/4" W - 30.3'

- (140358)**  
NORTH 1/16 CORNER SECTIONS 27/26  
FOUND 1-1/2" ALUMINUM CAP  
STAMPED PLS 1941, 2007  
BT REFERENCES:  
1) 9" FIR WITH TAG DATED 11/07  
S 19' E - 13.1"  
2) 8.5" FIR WITH TAG  
N 75-3/4" W - 17.3'

- (141224)**  
EAST 1/4 CORNER SECTIONS 27  
FOUND 2-1/2" BRASS CAP  
STAMPED COUNTY SURVEYORS OFFICE 1963  
BT REFERENCES:  
1) 14" PONDEROSA PINE WITH VISIBLE SCRIBE  
N 89' E - 14.2"  
2) 14" SNAG 30" TALL WITH TAG DATED 1/63  
N 18' W - 45.8"  
3) 31" PINE WITH HEALED FACE AND TAG DATED 1/63  
N 20' W - 52.8"

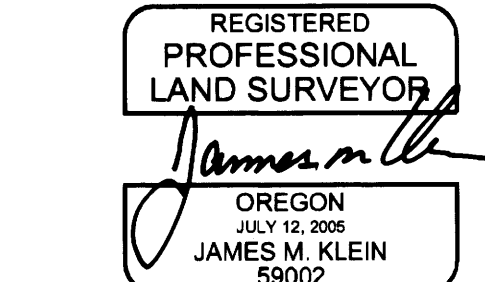
- (141221)**  
CENTER-EAST 1/16 CORNER SECTION 27  
FOUND 1-1/2" ALUMINUM CAP  
STAMPED PLS 1941, 2007  
BT REFERENCES:  
1) 12" FIR WITH HEALED FACE AND TAG DATED 11/07  
S 82-3/4" E - 20.6" TO NAIL SIDE CENTER  
2) 19" FIR WITH HEALED FACE AND TAG DATED 11/07  
S 11-1/2" W - 34.4" TO NAIL SIDE CENTER

REGISTERED  
PROFESSIONAL  
LAND SURVEYOR




OREGON  
JULY 13, 1992  
RICHARD R. KITZ  
1853  
Expires 8-30-2015


REGISTERED  
PROFESSIONAL  
LAND SURVEYOR



OREGON  
JULY 13, 2006  
JAMES M. KLEIN  
5902  
Expires 8-30-2015




**EASTSIDE CONSULTANTS, INC.**  
ENGINEERS • SURVEYORS • PLANNERS  
1309 N.W. 34th St., Suite 100  
Hood River, Oregon 97031  
Phone: (503) 262-2271  
Fax: (503) 262-2272



**Klein & Associates, Inc.**  
ENGINEERING • SURVEYING • PLANNING  
1411 13th Street • Hood River, OR 97031  
TEL: 541-386-3322 • FAX: 541-386-2515

PACIFIC CONNECTOR GAS PIPELINE PROJECT  
PACIFIC CONNECTOR GAS PIPELINE, LP  
RECORD OF SURVEY  
SECTION 22 & 27  
TOWNSHIP 30 SOUTH, RANGE 3 WEST, W.M.  
DOUGLAS COUNTY OREGON



DRAWN BY: LJS	DATE: 09-02-2014	ISSUED FOR BID:	SCALE: 1" = 200'
CHECKED BY: JK	DATE: 09-23-2014	ISSUED FOR CONSTRUCTION:	
APPROVED BY: JK	DATE: 09-23-2014	DRAWING NUMBER:	SHEET 4 OF 5

# RECORD OF SURVEY

LOCATED IN  
TOWNSHIP 30 SOUTH, RANGE 3 WEST, W.M.  
DOUGLAS COUNTY, OREGON

FILED  
Date: 10-14-2014 By: J.C.  
This survey consists of:  
Map: M166-19 A-E  
Narrative:  
Corner Rpt:  
DOUGLAS COUNTY  
SURVEYOR

### CORNER NOTES:

**(140347)**  
NORTH 1/16 CORNER SECTIONS 34/35  
FOUND 3-1/4" BRASS CAP  
STAMPED BLM 1983  
BT REFERENCES:  
1) 20.4" WHITE FIR WITH VISIBLE SCRIBES  
AND TAG DATED 6/83  
S 12-1/2" E - 15.2' TO NAIL SIDE CENTER  
2) 13.7" WHITE FIR WITH VISIBLE SCRIBES  
AND TAG DATED 6/83  
S 57-1/2" W - 11.2' TO NAIL SIDE CENTER

**(140378)**  
CENTER-NORTH 1/16 CORNER SECTION 35  
FOUND 3-1/4" BRASS CAP  
STAMPED BLM 1983  
BT REFERENCES:  
1) 11" FIR WITH VISIBLE SCRIBES  
AND TAG DATED 6/83  
N 53-1/2" E - 37.0' TO NAIL SIDE CENTER  
2) 13.7" FIR WITH HEALED FACE  
SET TAG DATED 11/13  
S 29" W - 21.8' TO NAIL SIDE CENTER

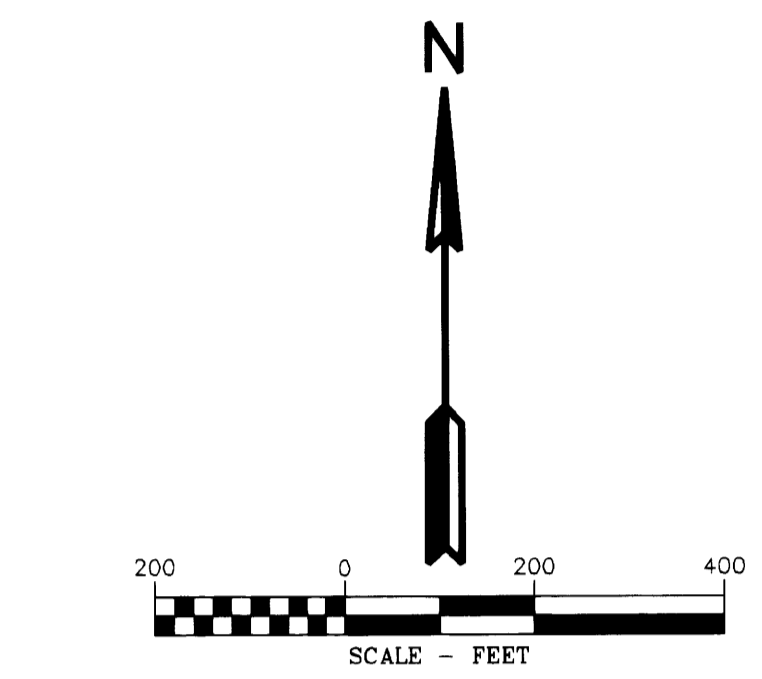
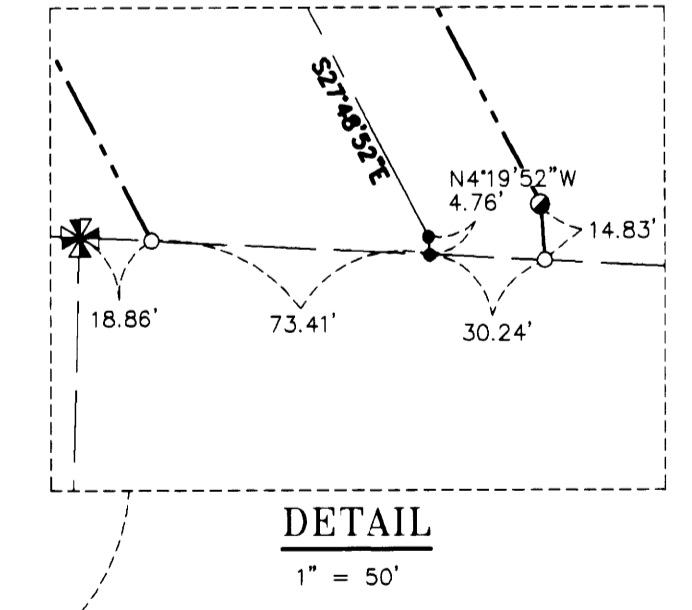
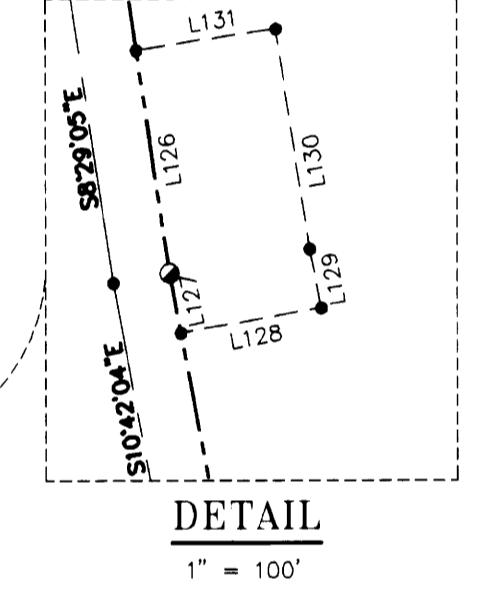
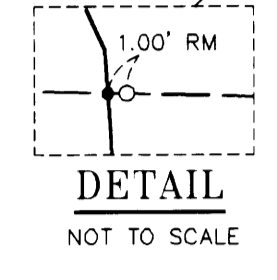
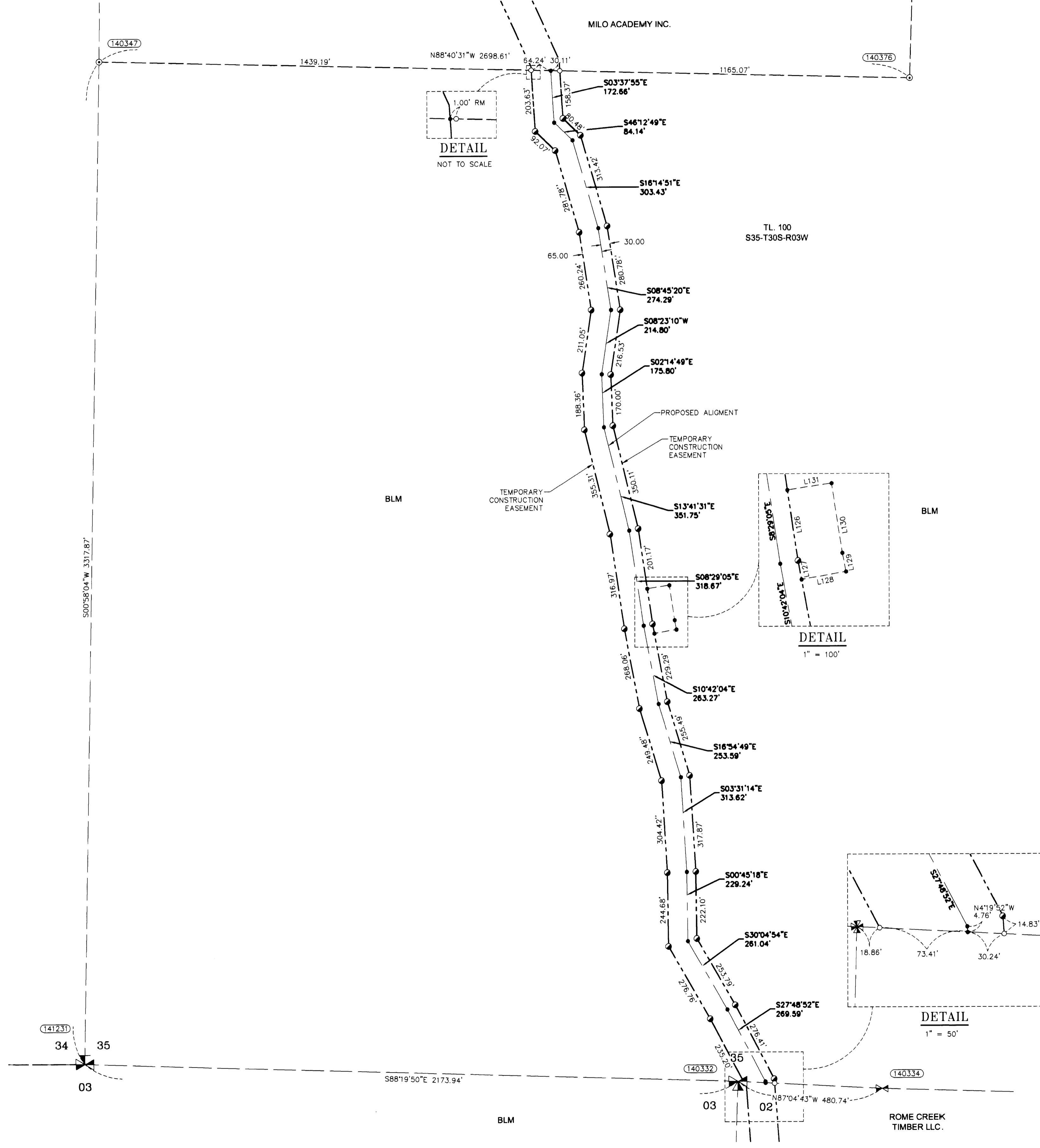
**(141231)**  
SOUTHWEST CORNER SECTIONS 35  
FOUND 2-1/2" BRASS CAP  
STAMPED COUNTY SURVEYOR OFFICE 1965  
BT REFERENCES:  
1) 27" MADRONE WITH TAG DATED 12/65  
S 36" E - 18.0'  
2) 36.5" FIR WITH HEALED "X"  
SET TAG DATED 4/14  
S 55" W - 27.4' TO NAIL SIDE CENTER  
3) 20" MADRONE WITH TAG DATED 12/65  
N 75" W - 10.5'

**(140332)**  
NORTHWEST CORNER SECTION 2-T31S,R3W  
CLOSING CORNER  
FOUND 2-1/2" BRASS CAP  
STAMPED COUNTY SURVEYORS OFFICE 1965  
BT REFERENCES:  
1) 22" WHITE FIR WITH HEALED FACE  
AND TAG DATED 1959  
N 84" W - 24.6' TO NAIL SIDE CENTER  
2) 33.5" DOUG FIR WITH HEALED FACE  
AND TAG DATED 7/57  
S 36" W - 16.0' TO NAIL SIDE CENTER  
3) 9" WHITE FIR WITH HEALED FACE  
AND TAG DATED 1959  
S 73" W - 13.0' TO NAIL SIDE CENTER  
4) 51" DOUG FIR WITH HEALED FACE  
AND TAG DATED 7-57  
S 18" E - 28.4' TO NAIL SIDE CENTER

**(140333)**  
SOUTH 1/4 CORNER SECTIONS 35  
FOUND 2-1/2" BRASS CAP  
STAMPED COUNTY SURVEYORS OFFICE 1965  
RESET 1983  
BT REFERENCES:  
1) 19.3" HEMLOCK WITH HEALED FACE  
AND TAG DATED 7/83  
N 56-1/2" E - 24.7' TO NAIL SIDE CENTER  
2) 19.5" DOUG FIR WITH HEALED FACE  
SET TAG DATED 10/13  
S 23-1/2" W - 13.9' TO NAIL SIDE CENTER

### LEGEND

- SET 5/8" X 24" REBAR WITH 1 1/4" YELLOW PLASTIC CAP (KLEIN & ASSOC. PLS 59002)
- SET 5/8" X 24" REBAR WITH 1 1/4" YELLOW PLASTIC CAP (KITZ 1853)
- ⊙ FOUND MONUMENT OF RECORD, SEE CORNER NOTES
- COMPUTED POINT, NOT MONUMENTED
- ⊙ FOUND QUARTER CORNER SEE CORNER NOTES
- ⊙ FOUND SECTION CORNER SEE CORNER NOTES
- ⊙ COMPUTED QUARTER CORNER
- ⊙ COMPUTED SECTION CORNER
- POINT NUMBER
- RM REFERENCE MONUMENT
- PROPOSED ALIGNMENT
- TEMPORARY CONSTRUCTION EASEMENT
- TEMPORARY WORK AREA



AREA SECTION 35

TEMPORARY CONSTRUCTION EASEMENT	7.61 ACRES
TEMPORARY WORK AREA	0.25 ACRES

### LINE TABLE

Line #	Direction	Length
L126	S8°29'05"E	118.28
L127	S10°42'04"E	31.77
L128	S79°59'19"W	75.11
L129	S10°56'53"E	31.55
L130	S8°43'54"E	116.77
L131	N81°18'56"E	74.45

REGISTERED PROFESSIONAL LAND SURVEYOR  
RICHARD R. KITZ  
1853  
Expires 6-30-2015

REGISTERED PROFESSIONAL LAND SURVEYOR  
JAMES M. KLEIN  
59002  
Expires 6-30-2015

**EASTSIDE CONSULTANTS, INC.**  
ENGINEERS-SURVEYORS  
1330 N.W. MALL ST., SUITE 200  
GRESHAM, OREGON 97030  
PHONE: (503) 682-4477  
FAX: (503) 682-4478

**Klein & Associates, Inc.**  
ENGINEERING SURVEYING PLANNING  
1411 13th Street + Hood River, OR 97031  
TEL: 541-386-3322 + FAX: 541-386-2515

PACIFIC CONNECTOR GAS PIPELINE PROJECT  
PACIFIC CONNECTOR GAS PIPELINE, LP  
RECORD OF SURVEY  
SECTION 35  
TOWNSHIP 30 SOUTH, RANGE 3 WEST, W.M.  
DOUGLAS COUNTY OREGON

**Pacific Connector GAS PIPELINE**

DRAWN BY: LIS	DATE: 09-02-2014	ISSUED FOR BID:	SCALE: 1" = 200'
CHECKED BY: JK	DATE: 09-23-2014	ISSUED FOR CONSTRUCTION:	
APPROVED BY: JK	DATE: 09-23-2014	DRAWING NUMBER:	SHEET 5 OF 5