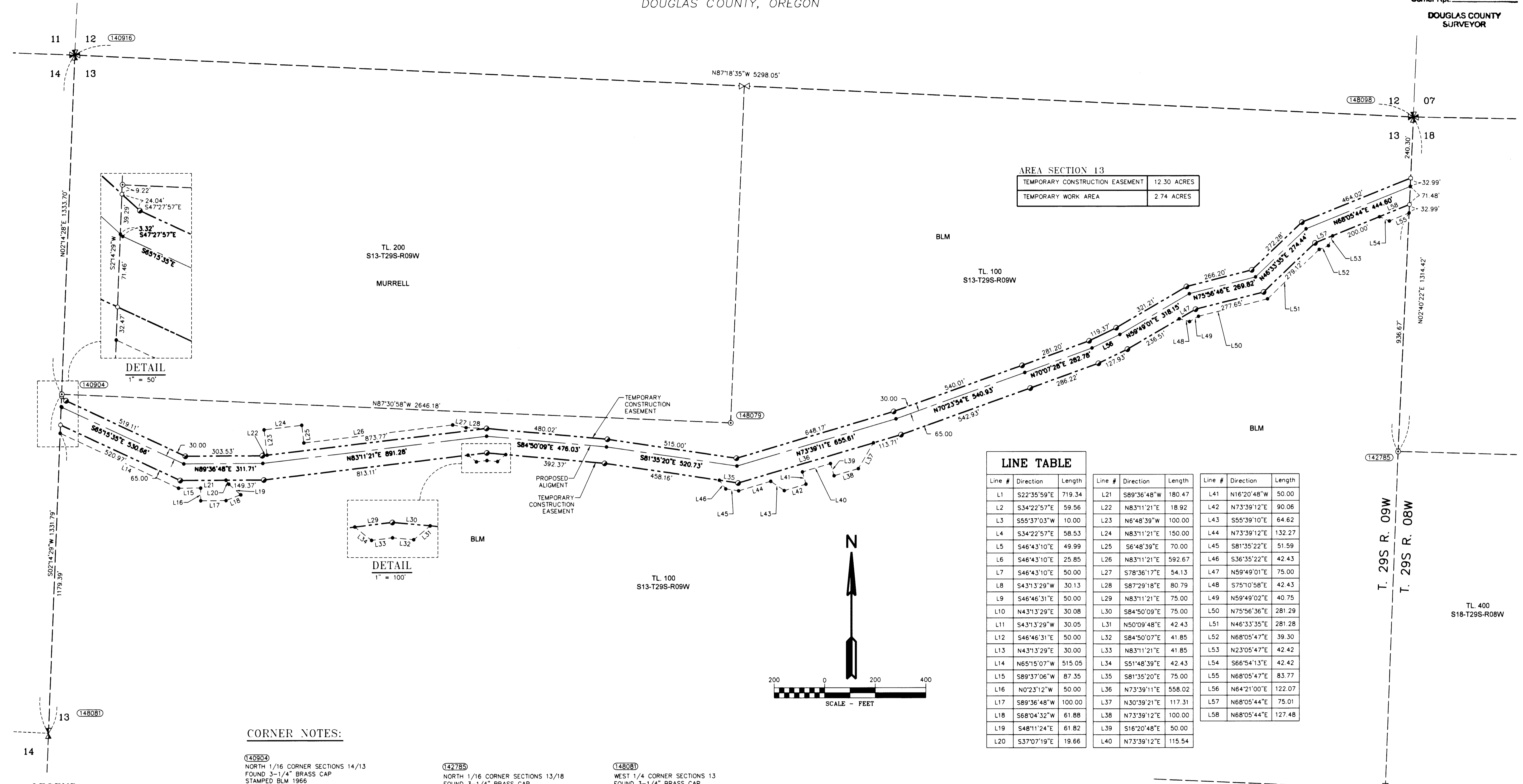


RECORD OF SURVEY

LOCATED IN
TOWNSHIP 29 SOUTH, RANGE 9 WEST, W.M.
DOUGLAS COUNTY, OREGON

FILED
Date: 10-1-2014 By: JC
This survey consists of:
Map: M1166-18A-C
Narrative:
Corner Rpt:

DOUGLAS COUNTY
SURVEYOR

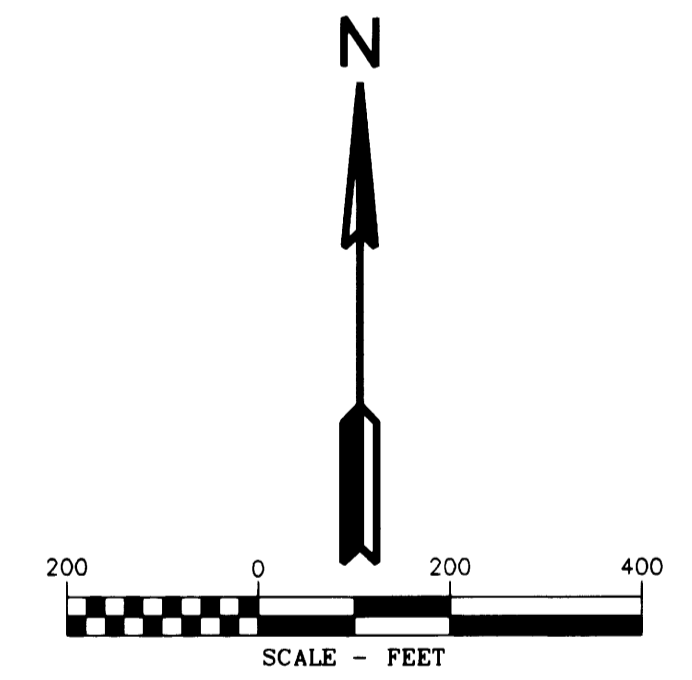


AREA SECTION 13

TEMPORARY CONSTRUCTION EASEMENT	12.30 ACRES
TEMPORARY WORK AREA	2.74 ACRES

LINE TABLE

Line #	Direction	Length	Line #	Direction	Length	Line #	Direction	Length
L1	S22°35'59"E	719.34	L21	S89°36'48"W	180.47	L41	N16°20'48"W	50.00
L2	S34°22'57"E	59.56	L22	N83°11'21"E	18.92	L42	N73°39'12"E	90.06
L3	S55°37'03"W	10.00	L23	N6°48'39"W	100.00	L43	S55°39'10"E	64.62
L4	S34°22'57"E	58.53	L24	N83°11'21"E	150.00	L44	N73°39'12"E	132.27
L5	S46°43'10"E	49.99	L25	S6°48'39"E	70.00	L45	S81°35'22"E	51.59
L6	S46°43'10"E	25.85	L26	N83°11'21"E	592.67	L46	S36°35'22"E	42.43
L7	S46°43'10"E	50.00	L27	S78°36'17"E	54.13	L47	N59°49'02"E	75.00
L8	S43°13'29"W	30.13	L28	S87°29'18"E	80.79	L48	S75°10'58"E	42.43
L9	S46°46'31"E	50.00	L29	N83°11'21"E	75.00	L49	N59°49'02"E	40.75
L10	N43°13'29"E	30.08	L30	S84°50'09"E	75.00	L50	N75°56'36"E	281.29
L11	S43°13'29"W	30.05	L31	N50°09'48"E	42.43	L51	N46°33'35"E	281.28
L12	S46°46'31"E	50.00	L32	S84°50'07"E	41.85	L52	N68°05'47"E	39.30
L13	N43°13'29"E	30.00	L33	N83°11'21"E	41.85	L53	N23°05'47"E	42.42
L14	N65°15'07"W	515.05	L34	S51°48'39"E	42.43	L54	S66°54'13"E	42.42
L15	S89°37'06"W	87.35	L35	S81°35'20"E	75.00	L55	N68°05'47"E	83.77
L16	N0°23'12"W	50.00	L36	N73°39'11"E	558.02	L56	N64°21'00"E	122.07
L17	S89°36'48"W	100.00	L37	N30°39'21"E	117.31	L57	N68°05'44"E	75.01
L18	S68°04'32"W	61.88	L38	N73°39'12"E	100.00	L58	N68°05'44"E	127.48
L19	S48°11'24"E	61.82	L39	S16°20'48"E	50.00			
L20	S37°07'19"E	19.66	L40	N73°39'12"E	115.54			




CORNER NOTES:

- (140904)** NORTH 1/16 CORNER SECTIONS 14/13
FOUND 3-1/4" BRASS CAP
STAMPED BLM 1966
BT REFERENCES:
1) 14" OAK WITH TAG DATED 9/66
N 67° E - 43.5'
2) 15" FIR WITH HEALED FACE
AND TAG DATED 6/02
S 08° E - 18.4'
- (140916)** NORTHWEST CORNER SECTIONS 13
FOUND 2-1/2" BRASS CAP
STAMPED COUNTY SURVEYOR 1958
BT REFERENCES:
1) 19.5" DEAD FIR WITH TAG DATED 1/63
N 45° E - 3.0'
2) 15" FIR WITH HEALED FACE
AND TAG DATED 2007
N 81° E - 12.7' TO NAIL IN SIDE CENTER
3) 13" FIR WITH HEALED FACE
AND TAG DATED 2007
S 59-1/4° E - 46.5' TO NAIL IN SIDE CENTER
4) 15" FIR WITH HEALED FACE
AND TAG DATED 2007
N 41-3/4° W - 32.5' TO NAIL IN SIDE CENTER
- (142785)** NORTH 1/16 CORNER SECTIONS 13/18
FOUND 3-1/4" BRASS CAP
STAMPED BLM 2002
BT REFERENCES:
1) 11-1/2" FIR WITH HEALED FACE
AND TAG DATED 7/02
S 32° E - 19.8' TO NAIL IN SIDE CENTER
2) 13" FIR WITH HEALED FACE
AND TAG DATED 7/02
S 60° W - 13.0' TO NAIL IN SIDE CENTER
- (148079)** CENTER-NORTH 1/16 CORNER SECTION 13
FOUND 3-1/4" BRASS CAP
STAMPED BLM 2002
BT REFERENCES:
1) 14" FIR WITH HEALED FACE
AND TAG DATED 7/02
S 60° E - 21.5' TO NAIL SIDE CENTER
2) 13" FIR WITH HEALED FACE
AND TAG DATED 7/02
S 48° W - 6.3' TO NAIL SIDE CENTER
- (148081)** WEST 1/4 CORNER SECTIONS 13
FOUND 3-1/4" BRASS CAP
STAMPED BLM 1966
BT REFERENCES:
1) 32" FIR WITH OLD TAG
N 10° E - 39.6'
2) 11.5" FIR WITH HEALED FACE
AND TAG DATED 6/02
N 70° W - 19.2' TO NAIL SIDE CENTER
- (148099)** NORTHEAST CORNER SECTION 13
FOUND 2-1/2" BRASS CAP
STAMPED COUNTY SURVEYOR 1966
BT REFERENCES:
1) 8.5" FIR WITH HEALED FACE
AND TAG DATED 7/02
N 46° E - 17.5' TO NAIL IN SIDE CENTER
2) 31" CEDAR WITH HEALED FACE
AND TAG DATED 7/02
S 17° E - 36.3'
3) 12.5" FIR WITH HEALED FACE
AND TAG DATED 07/02
S 40° W - 39.5' TO NAIL IN SIDE CENTER
4) 15.5" FIR WITH HEALED FACE
AND TAG DATED 07/02
N 14° W - 11.7' TO NAIL IN SIDE CENTER

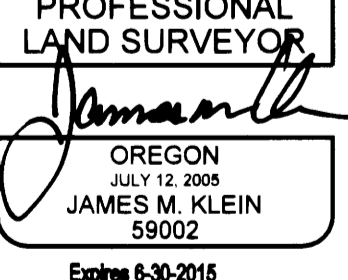
- ### LEGEND
- SET 5/8" x 24" REBAR WITH 1 1/4" YELLOW PLASTIC CAP (KLEIN & ASSOC LS 59002)
 - SET 5/8" x 24" REBAR WITH 1 1/4" YELLOW PLASTIC CAP (KITZ 1853LS)
 - FOUND MONUMENT AS NOTED (SEE CORNER NOTES)
 - COMPUTED POINT, NOT MONUMENTED
 - ⊗ FOUND QUARTER CORNER
SEE CORNER NOTES
 - ⊗ FOUND SECTION CORNER
SEE CORNER NOTES
 - ⊗ COMPUTED QUARTER CORNER
 - ⊗ COMPUTED SECTION CORNER
 - POINT NUMBER
 - PROPOSED ALIGNMENT
 - - - - - TEMPORARY CONSTRUCTION EASEMENT
 - - - - - TEMPORARY WORK AREA

REGISTERED
PROFESSIONAL
LAND SURVEYOR

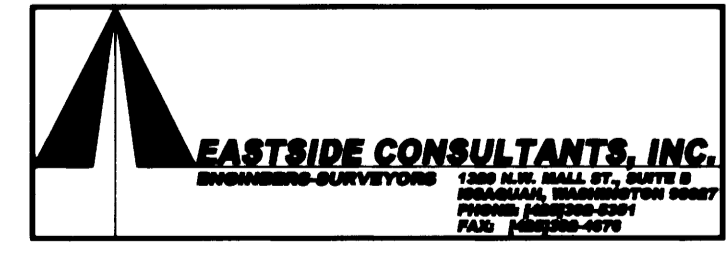


OREGON
JULY 15 1978
RICHARD R. KITZ
1853
Expires 6-30-2015


REGISTERED
PROFESSIONAL
LAND SURVEYOR



OREGON
JULY 12 2000
JAMES M. KLEIN
59002
Expires 6-30-2015



EASTSIDE CONSULTANTS, INC.
SURVEYING • PLANNING • ENGINEERING



Klein & Associates, Inc.
ENGINEERING • SURVEYING • PLANNING
1411 13th Street - Hood River, OR 97031
TEL: 541-386-3322 • FAX: 541-386-2615

PACIFIC CONNECTOR GAS PIPELINE PROJECT
PACIFIC CONNECTOR GAS PIPELINE, LP
SECTION 13
RECORD OF SURVEY
TOWNSHIP 29 SOUTH, RANGE 9 WEST, W.M.
DOUGLAS COUNTY, OREGON

DRAWN BY: LJS DATE: 09-16-2014 ISSUED FOR BID: SCALE: 1" = 200'

CHECKED BY: DATE: ISSUED FOR CONSTRUCTION:

APPROVED BY: DATE: DRAWING NUMBER: SHEET 3 OF 3

