

# RECORD OF SURVEY

LOCATED IN  
TOWNSHIP 29 SOUTH, RANGE 9 WEST, W.M.  
DOUGLAS COUNTY, OREGON

FILED

Date: 10-7-2014 By: J.C.  
This survey consists of:  
Map: M166-18B  
Narrative:  
Corner Rpt:

DOUGLAS COUNTY  
SURVEYOR

### CORNER NOTES:

- (142785)**  
EAST 1/4 CORNER SECTIONS 15  
FOUND 2" BRASS CAP  
STAMPED COUNTY SURVEYOR 1974  
BT REFERENCES:  
1) 11-1/2" FIR WITH HEALED FACE  
AND ROSEBURG RESOURCES TAG DATED 9/04  
N 2-1/2' E - 35.2' TO NAIL IN SIDE CENTER  
2) 19.5" FIR WITH  
ROSEBURG RESOURCE TAG DATED 9/04  
S 56° E - 33.7' TO NAIL IN SIDE CENTER  
3) 30" 22 FT TALL SNAG WITH HEALED FACE  
AND BLM TAG DATED 9/59  
S 3-1/2' E - 30.6'  
4) 11.5" FIR WITH HEALED FACE  
AND ROSEBURG RESOURCES TAG DATED 9/04  
S 80-1/2' W - 48.2' TO NAIL IN SIDE CENTER  
5) 28" FIR WITH HEALED FACE  
AND ROSEBURG RESOURCES TAG DATED 9/04  
N 63-1/2' W - 44.2' TO NAIL IN SIDE CENTER

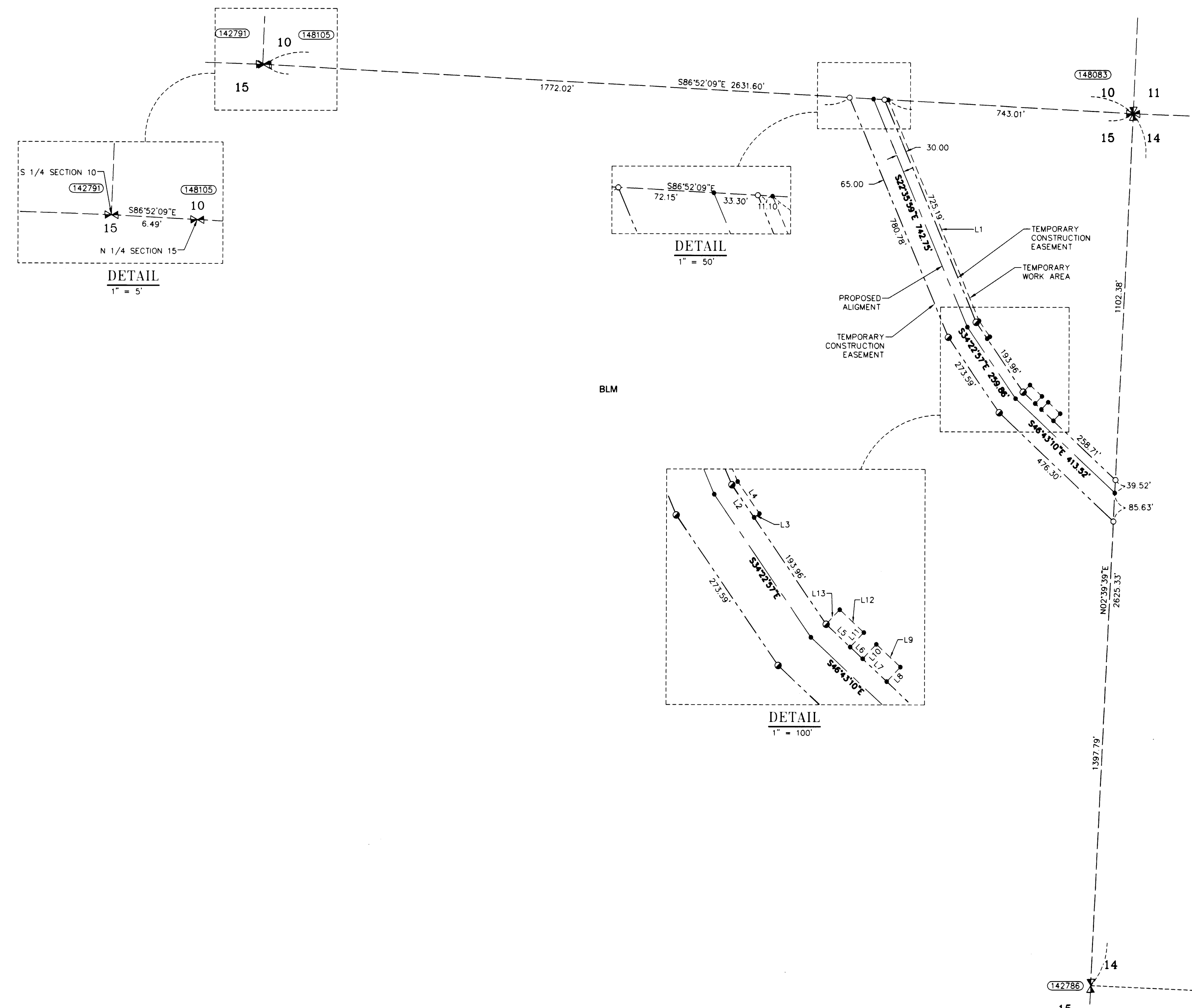
- (142791)**  
SOUTH 1/4 CORNER SECTION 10  
FOUND 2-1/2" BRASS CAP  
STAMPED COUNTY SURVEYOR 1959  
BT REFERENCES:  
1) 13" WHITE FIR WITH HEALED FACE  
WITH TAG DATED 01/01  
N 55° E - 9.1' TO NAIL IN SIDE CENTER

- (148083)**  
NORTHEAST CORNER SECTION 15  
FOUND 2-1/2" BRASS CAP  
STAMPED COUNTY SURVEYOR 1959  
STAMPED BLM 1966  
BT REFERENCES:  
1) 23-1/2" FIR WITH HEALED FACE  
AND ROSEBURG RESOURCES TAG DATED 9/04  
N 50° E - 11.8' TO NAIL IN SIDE CENTER  
2) 37" FIR WITH HEALED FACE  
AND ROSEBURG RESOURCES TAG DATED 9/04  
S 44-1/2' E - 21.15' TO NAIL IN SIDE CENTER  
3) 16" FIR WITH HEALED FACE  
AND ROSEBURG RESOURCES TAG DATED 09/04  
S 36-1/2' W - 3.5' TO NAIL IN SIDE CENTER  
4) 12" FIR WITH HEALED FACE  
AND ROSEBURG RESOURCES TAG DATED 09-04  
N 55° W - 14.8' TO NAIL IN SIDE CENTER  
5) 47" FIR WITH HEALED FACE  
AND ROSEBURG RESOURCES TAG DATED 09-04  
N 08° E - 33.8' TO NAIL IN SIDE CENTER

- (148105)**  
NORTH 1/4 CORNER SECTION 15  
FOUND 3-1/4" BRASS CAP  
STAMPED BLM 2005  
BT REFERENCES:  
4) 13" HEMLOCK WITH VISIBLE SCRIBE  
AND BLM TAG DATED 09/05  
S 68° E - 4.6' TO NAIL IN SIDE CENTER  
5) 7" HEMLOCK WITH VISIBLE SCRIBE  
AND BLM TAG DATED 09/05  
S 36° W - 6.9' TO NAIL IN SIDE CENTER

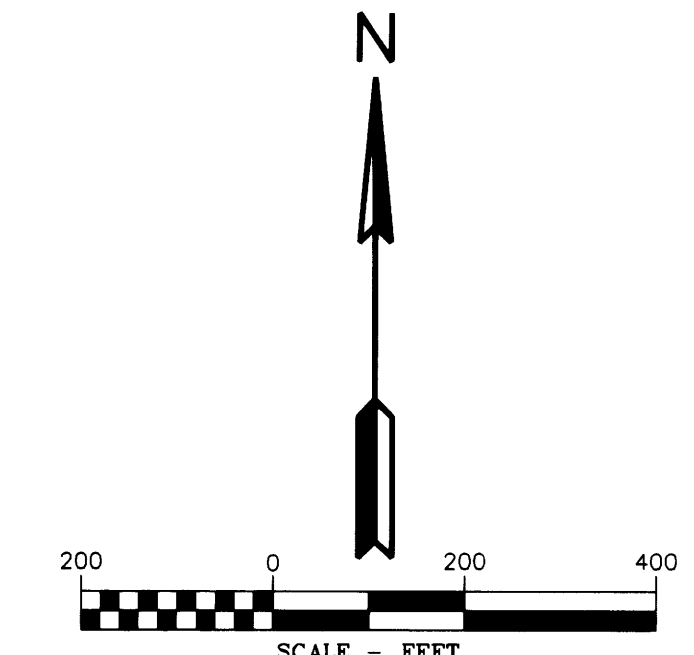
### LEGEND

- SET 5/8" X 24" REBAR WITH 1 1/4" YELLOW PLASTIC CAP (KLEIN & ASSOC. ILS 59002)
- SET 5/8" X 24" REBAR WITH 1 1/4" YELLOW PLASTIC CAP (KITZ 1853LS)
- ⊙ FOUND MONUMENT AS NOTED (SEE CORNER NOTES)
- COMPUTED POINT, NOT MONUMENTED
- ⊠ FOUND QUARTER CORNER  
SEE CORNER NOTES
- ⊠ FOUND SECTION CORNER  
SEE CORNER NOTES
- ⊠ COMPUTED QUARTER CORNER
- ⊠ COMPUTED SECTION CORNER
- ⑩ POINT NUMBER
- PROPOSED ALIGNMENT
- - - - - TEMPORARY CONSTRUCTION EASEMENT
- TEMPORARY WORK AREA



AREA SECTION 15

TEMPORARY CONSTRUCTION EASEMENT	3.15 ACRES
TEMPORARY WORK AREA	0.24 ACRES



### LINE TABLE

Line #	Direction	Length
L1	S22°35'59"E	719.34
L2	S34°22'57"E	59.56
L3	S55°37'03"W	10.00
L4	S34°22'57"E	58.53
L5	S46°43'10"E	49.99
L6	S46°43'10"E	25.85
L7	S46°43'10"E	50.00
L8	S43°13'29"W	30.13
L9	S46°46'31"E	50.00
L10	N43°13'29"E	30.08
L11	S43°13'29"W	30.05
L12	S46°46'31"E	50.00
L13	N43°13'29"E	30.00
L14	N65°15'07"W	515.05
L15	S89°37'06"W	87.35
L16	N0°23'12"W	50.00
L17	S89°36'48"W	100.00
L18	S68°04'32"W	61.88
L19	S48°11'24"E	61.82
L20	S37°07'19"E	19.66

REGISTERED  
PROFESSIONAL  
LAND SURVEYOR



OREGON  
JULY 13 1979  
RICHARD R. KITZ  
1853  
Expires 6-30-2015

REGISTERED  
PROFESSIONAL  
LAND SURVEYOR



OREGON  
JULY 12 2005  
JAMES M. KLEIN  
59002  
Expires 6-30-2015




**EASTSIDE CONSULTANTS, INC.**  
ENGINEERING • SURVEYING • PLANNING  
1309 N.W. 34th St., Suite 200  
Portland, Oregon 97210  
Phone: 503-255-9977  
Fax: 503-255-9978



**Klein & Associates, Inc.**  
ENGINEERING • SURVEYING • PLANNING  
1411 13th Street • Hood River, OR 97031  
TEL: 541-386-3322 • FAX: 541-386-2515

PACIFIC CONNECTOR GAS PIPELINE PROJECT  
PACIFIC CONNECTOR GAS PIPELINE, LP  
SECTION 15  
RECORD OF SURVEY  
TOWNSHIP 29 SOUTH, RANGE 9 WEST, W.M.  
DOUGLAS COUNTY, OREGON



DRAWN BY: LJS	DATE: 09-16-2014	ISSUED FOR BID:	SCALE: 1" = 200'
CHECKED BY:	DATE:	ISSUED FOR CONSTRUCTION:	
APPROVED BY:	DATE:	DRAWING NUMBER:	SHEET 2 OF 3