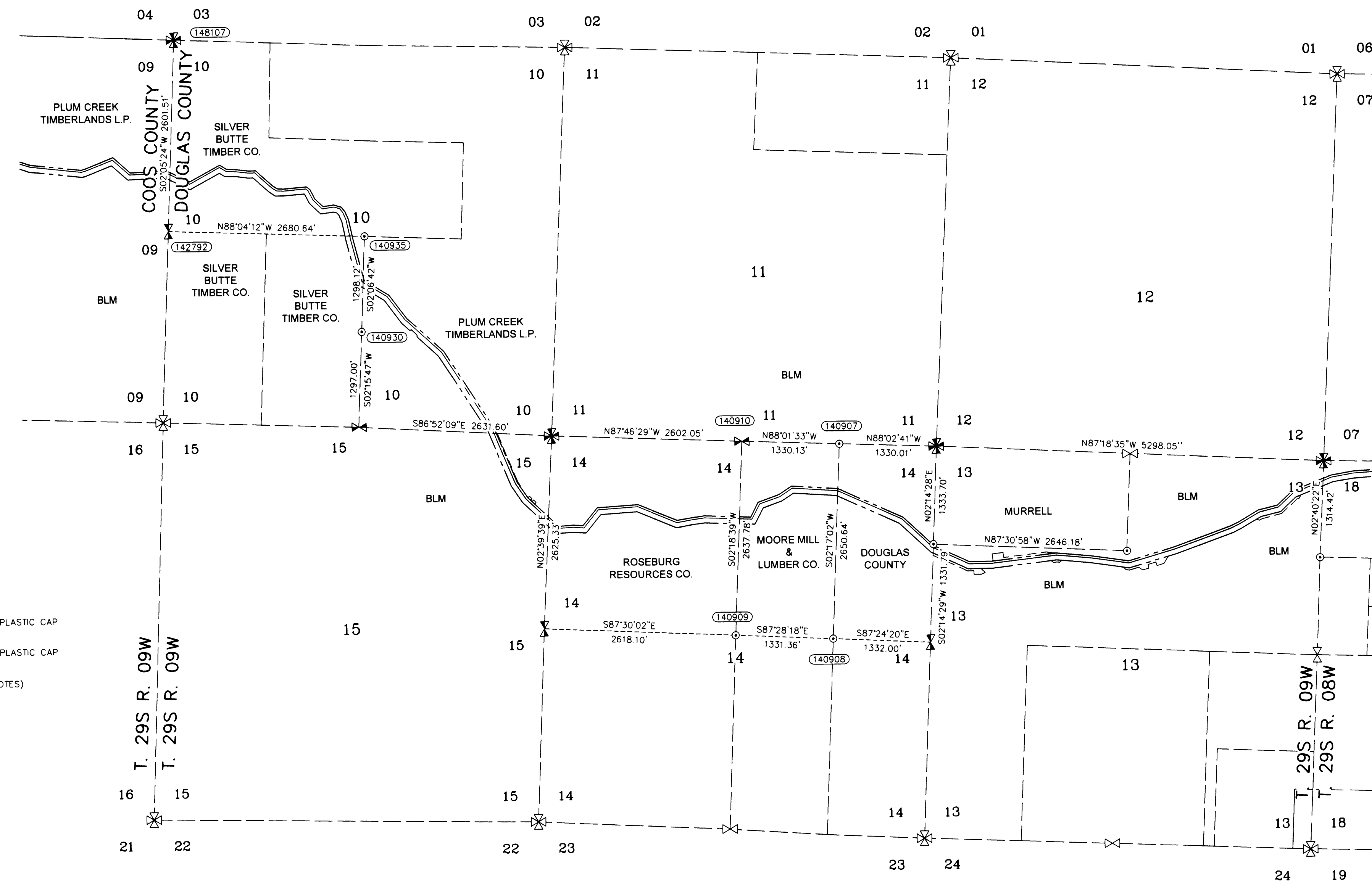


RECORD OF SURVEY

LOCATED IN
TOWNSHIP 29 SOUTH, RANGE 9 WEST, W.M.
DOUGLAS COUNTY, OREGON

FILED
Date: 10-7-2014 By: JC
This survey consists of:
Map: M166-18A-c
Narrative:
Corner Rpt:
DOUGLAS COUNTY
SURVEYOR



- CORNER NOTES:**
- (142792)**
EAST 1/16 CORNER SECTIONS 14/11
FOUND 2" ALUMINUM CAP
STAMPED AA SURVEYING SERVICE, INC.
BT REFERENCES:
1) 10.5" FIR WITH HEALED FACE AND TAG DATED 11/07
N 74-1/4° E - 10.9' TO NAIL
2) 7" FIR WITH AA TAG DATED 1/84
S 42° E - 7.5'
3) 11" FIR WITH HEALED FACE AND TAG DATED 11/07
S 0-1/4° E - 18.8' TO NAIL
4) 14.5" FIR WITH AA TAG DATED 01/84
S 36° W - 6.6'
- (142792)**
WEST 1/4 CORNER SECTIONS 10
FOUND 3-1/4" BRASS CAP ON 2-1/2" PIPE
STAMPED BLM 1968
BT REFERENCES:
1) 20" FIR WITH HEALED FACE AND TAG DATED 08/00
N 16° E - 52.4' TO NAIL IN SIDE CENTER
2) 35" 3 FT. TALL STUMP WITH HEALED "X"
N 39°15' E - 11.2'
3) 17" HEMLOCK WITH HEALED FACE AND TAG DATED 6/68
S 79° W - 106.3'
4) 19" WHITE FIR WITH HEALED FACE AND COOS COUNTY TAG DATED 8/00
N 41° W - 63.4' TO NAIL IN SIDE CENTER
- (140928)**
CENTER-EAST 1/16 CORNER SECTION 14
FOUND 2" ALUMINUM CAP ON 5/8" REBAR
STAMPED AA SURVEYING SERVICE, INC.
BT REFERENCES:
1) 18.5" ALDER WITH AA TAG DATED 01/84
N 60° W - 7.4'
- (148107)**
NORTHWEST CORNER SECTION 10
FOUND 2-1/2" BRASS CAP ON 1" PIPE
STAMPED COOS COUNTY 1959
BT REFERENCES:
1) 31" HEMLOCK WITH HEALED FACE AND BLM TAG DATED 5/68
N 18° E - 23.1'
2) 24" FIR WITH HEALED FACE AND BLM TAG DATED 05/68
S 37-1/2° E - 49.5'
3) 55" STUMP 6 FT. TALL WITH TAG DATED 1998
S 25° E - 31.7'
4) 31" CEDAR WITH TAG DATED 1998
S 58° W - 17.2'
5) 19.5" HEMLOCK WITH VISIBLE SCRIBE AND TAG DATED 05/03/05
N 10-1/4° W - 42.9' TO NAIL IN SIDE CENTER
- (140909)**
CENTER 1/4 CORNER SECTION 14
FOUND 2" ALUMINUM CAP ON 5/8" REBAR
STAMPED S 2485 2000.
BT REFERENCES:
1) 14" 5 FT. TALL STUMP
N 38° E - 18.7'
2) 13" 5 FT. TALL STUMP WITH TAG DATED 07/00
S 09° E - 5.0'
3) 15" 20 FT. SNAG WITH TAG DATED 07/00
S 84° W - 15.4'
- (140910)**
NORTH 1/4 CORNER SECTION 14
FOUND 2-1/2" BRASS CAP ON 1" PIPE
STAMPED COUNTY SURVEYOR OFFICE 1959
BT REFERENCES:
1) 12" FIR WITH HEALED FACE AND TAG DATED 09/04
N 48° E - 28.55'
2) 12.5" FIR WITH HEALED FACE AND TAG DATED 08/00
S 18° E - 30.6'
3) 13" FIR WITH VISIBLE SCRIBE AND TAG DATED 09/04
S 32° W - 44.7' TO NAIL
- (140930)**
CENTER-SOUTH 1/16 CORNER SECTION 10
FOUND 5/8" REBAR WITH YELLOW CAP
STAMPED I.E. ENG
BT REFERENCES:
1) 12" 6 FT. TALL SNAG WITH VISIBLE SCRIBE AND TAG DATED 01/01
N 44° E - 18.7' TO NAIL IN SIDE CENTER
2) 12" FIR SET NEW TAG SCRIBED KA 3/14
S 12° W - 35.7' TO NAIL IN SIDE CENTER
3) 12" HEMLOCK WITH VISIBLE SCRIBE AND TAG DATED 01/01
N 76-1/2° W - 48.0' TO NAIL
- (140935)**
CENTER 1/4 CORNER SECTION 10
FOUND 5/8" REBAR WITH YELLOW CAP
STAMPED I.E. ENG
BT REFERENCES:
1) 30" FIR WITH HEALED FACE AND TAG DATED 02/01
N 54-1/2° E - 11.4'
2) 7" FIR WITH HEALED FACE AND TAG DATED 02/01
S 14° W - 115.7' TO NAIL IN SIDE CENTER

LEGEND

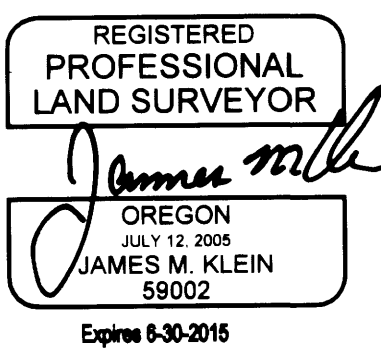
- SET 5/8" X 24" REBAR WITH 1 1/4" YELLOW PLASTIC CAP (KLEIN & ASSOC. LS 59002)
- SET 5/8" X 24" REBAR WITH 1 1/4" YELLOW PLASTIC CAP (KITZ 1853LS)
- ⊙ FOUND MONUMENT AS NOTED (SEE CORNER NOTES)
- COMPUTED POINT, NOT MONUMENTED
- ⊠ FOUND QUARTER CORNER (SEE CORNER NOTES)
- ⊞ FOUND SECTION CORNER (SEE CORNER NOTES)
- ⊠ COMPUTED QUARTER CORNER
- ⊞ COMPUTED SECTION CORNER
- (100000) POINT NUMBER
- PROPOSED ALIGNMENT
- - - TEMPORARY CONSTRUCTION EASEMENT
- - - TEMPORARY WORK AREA

SURVEYOR'S CERTIFICATE

I, JAMES M. KLEIN BEING DULY SWORN AS A PROFESSIONAL LAND SURVEYOR IN THE STATE OF OREGON DO HEREBY CERTIFY THAT THIS MAP CORRECTLY REPRESENTS A SURVEY CONDUCTED UNDER MY DIRECT SUPERVISION IN CONFORMANCE WITH THE REQUIREMENTS OF THE SURVEY RECORDING LAW, AS ESTABLISHED BY ORS CHAPTER 209, AND HAVE SET THE PROPER MONUMENTS AS REFERENCED IN THE LEGEND BY MY REGISTRATION NUMBER AND SEAL.

FURTHERMORE, I APPROVE THE LOCATION OF THE MONUMENTS AS DEPICTED ON THIS SURVEY DRAWING TO BE IN THEIR PROPER LOCATION.

James M. Klein
JAMES M. KLEIN PLS 59002
Expires 6-30-2015



SURVEYOR'S CERTIFICATE

I, RICHARD R. KITZ BEING DULY SWORN AS A PROFESSIONAL LAND SURVEYOR IN THE STATE OF OREGON DO HEREBY CERTIFY THAT THIS MAP CORRECTLY REPRESENTS A SURVEY CONDUCTED UNDER MY DIRECT SUPERVISION IN CONFORMANCE WITH THE REQUIREMENTS OF THE SURVEY RECORDING LAW, AS ESTABLISHED BY ORS CHAPTER 209, AND HAVE SET THE PROPER MONUMENTS AS REFERENCED IN THE LEGEND BY MY REGISTRATION NUMBER AND SEAL.

FURTHERMORE, I APPROVE THE LOCATION OF THE MONUMENTS AS DEPICTED ON THIS SURVEY DRAWING TO BE IN THEIR PROPER LOCATION.

Richard R. Kitz
RICHARD R. KITZ PLS 1853
Expires 6-30-2015



SURVEY PERFORMED FOR:
WILLIAMS
DATE OF MONUMENTATION: AUGUST 7, 2014
PROJECT: 14-02-05 DRAFT: GD, LS
FILE: RS-385-05E.DWG

SHEET INDEX:

- SHEET 1 = COVER PAGE TOWNSHIP OVERVIEW
- SHEET 2 = SECTION 15
- SHEET 3 = SECTION 13

NARRATIVE

THE PURPOSE OF THIS SURVEY IS TO MONUMENT THE TEMPORARY CONSTRUCTION CORRIDOR WITHIN THE FEDERAL LANDS FOR THE WILLIAMS PACIFIC CONNECTOR GAS LINE. THIS SURVEY IS LOCATED IN TOWNSHIP 29 SOUTH, RANGE 9 WEST, OF THE WILLAMETTE MERIDIAN.

THE PUBLIC LAND SURVEY SYSTEM MONUMENTS WERE FOUND AND TIED BY KLEIN & ASSOCIATES.

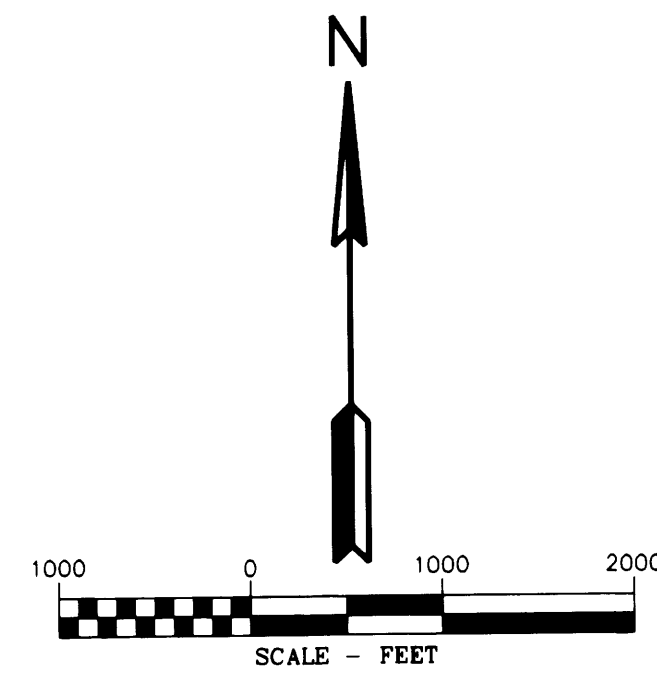
THE TEMPORARY CONSTRUCTION EASEMENT WAS SURVEYED AND MONUMENTED BY EASTSIDE CONSULTANTS, INC.

THE INTERSECTION OF THE TEMPORARY CONSTRUCTION EASEMENT AND THE FEDERAL LANDS WERE MONUMENTED BY KLEIN & ASSOCIATES.

SCALE FACTOR NOTE

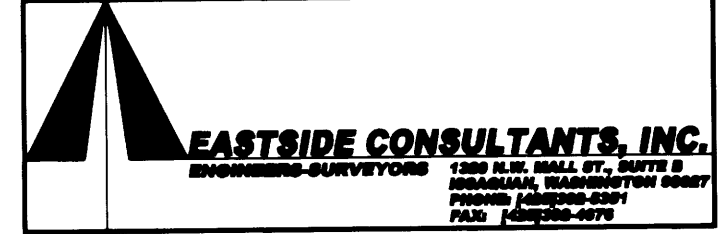
THE DISTANCES SHOWN ON THIS SURVEY ARE GRID DISTANCES.
THE COMBINED SCALE FACTOR = 0.999804944
TO CONVERT FROM GRID TO GROUND MULTIPLY THE DISTANCE BY 1.000195094.

EXAMPLE: 300.00' GRID DISTANCE
300.00' x 1.000195094 = 300.06' GROUND DISTANCE.



BASIS OF BEARINGS

OREGON STATE PLANE COORDINATE SYSTEM NAD 1983 (CONUS) OREGON SOUTH ZONE 3602 US SURVEY FOOT GRID NORTH



PACIFIC CONNECTOR GAS PIPELINE PROJECT
PACIFIC CONNECTOR GAS PIPELINE, LP

RECORD OF SURVEY
TOWNSHIP 29 SOUTH, RANGE 9 WEST, W.M.
DOUGLAS COUNTY, OREGON

Pacific Connector GAS PIPELINE

DRAWN BY: LJS	DATE: 09-16-2014	ISSUED FOR BID:	SCALE: 1" = 1000'
CHECKED BY:	DATE:	ISSUED FOR CONSTRUCTION:	
APPROVED BY:	DATE:	DRAWING NUMBER:	SHEET 1 OF 3

RECORD OF SURVEY

LOCATED IN
TOWNSHIP 29 SOUTH, RANGE 9 WEST, W.M.
DOUGLAS COUNTY, OREGON

FILED
Date: 10-7-2014 By: J.C.
This survey consists of:
Map: M166-18B
Narrative:
Corner Rpt:
DOUGLAS COUNTY
SURVEYOR

CORNER NOTES:

- (142785)**
EAST 1/4 CORNER SECTIONS 15
FOUND 2" BRASS CAP
STAMPED COUNTY SURVEYOR 1974
BT REFERENCES:
1) 11-1/2" FIR WITH HEALED FACE
AND ROSEBURG RESOURCES TAG DATED 9/04
N 2-1/2' E - 35.2' TO NAIL IN SIDE CENTER
2) 19.5" FIR WITH
ROSEBURG RESOURCE TAG DATED 9/04
S 56° E - 33.7' TO NAIL IN SIDE CENTER
3) 30" 22 FT TALL SNAG WITH HEALED FACE
AND BLM TAG DATED 9/59
S 3-1/2' E - 30.6'
4) 11.5" FIR WITH HEALED FACE
AND ROSEBURG RESOURCES TAG DATED 9/04
S 80-1/2' W - 48.2' TO NAIL IN SIDE CENTER
5) 28" FIR WITH HEALED FACE
AND ROSEBURG RESOURCES TAG DATED 9/04
N 63-1/2' W - 44.2' TO NAIL IN SIDE CENTER

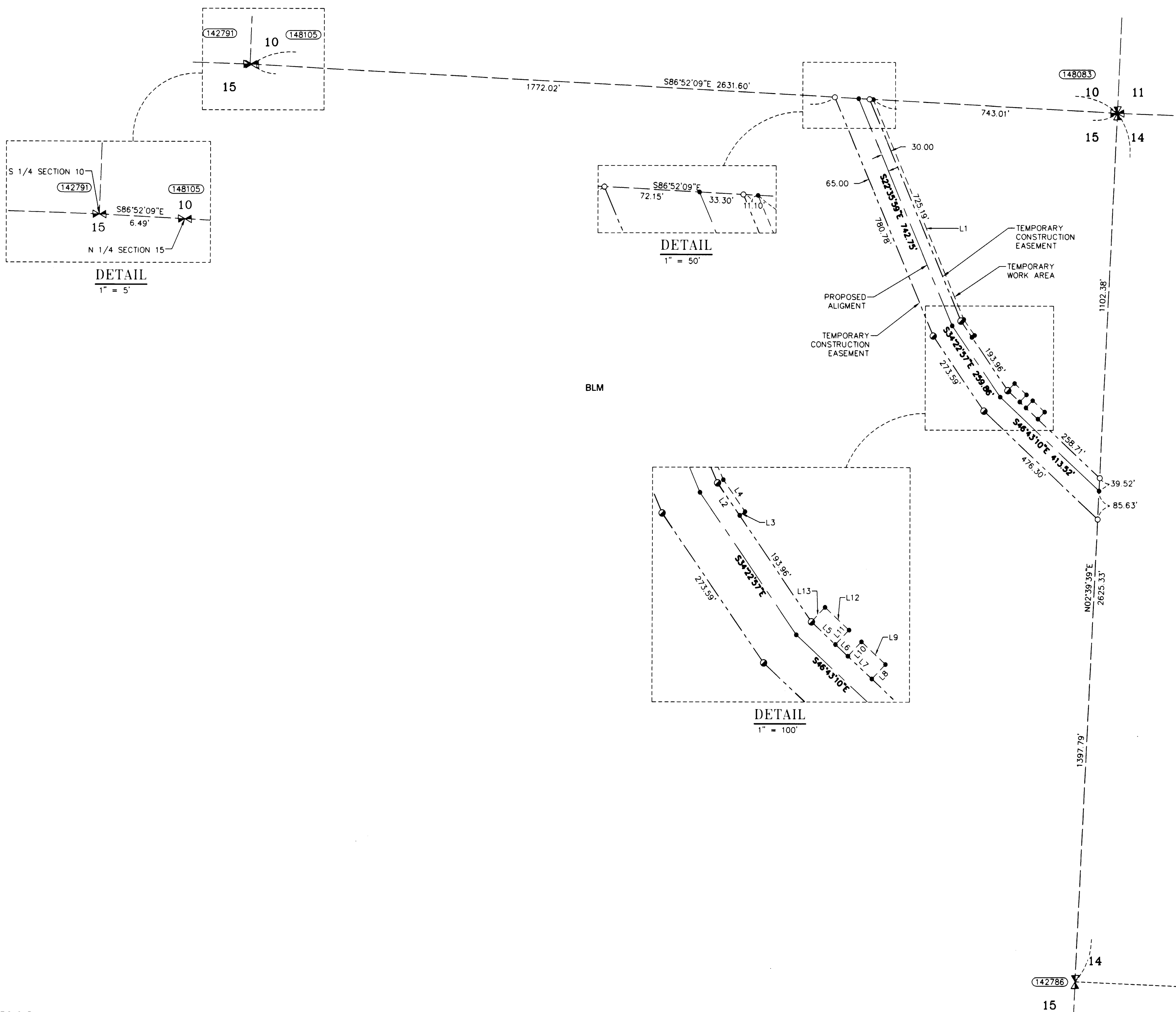
- (142791)**
SOUTH 1/4 CORNER SECTION 10
FOUND 2-1/2" BRASS CAP
STAMPED COUNTY SURVEYOR 1959
BT REFERENCES:
1) 13" WHITE FIR WITH HEALED FACE
WITH TAG DATED 01/01
N 55° E - 9.1' TO NAIL IN SIDE CENTER

- (148083)**
NORTHEAST CORNER SECTION 15
FOUND 2-1/2" BRASS CAP
STAMPED COUNTY SURVEYOR 1959
STAMPED BLM 1966
BT REFERENCES:
1) 23-1/2" FIR WITH HEALED FACE
AND ROSEBURG RESOURCES TAG DATED 9/04
N 50° E - 11.8' TO NAIL IN SIDE CENTER
2) 37" FIR WITH HEALED FACE
AND ROSEBURG RESOURCES TAG DATED 9/04
S 44-1/2' E - 21.15' TO NAIL IN SIDE CENTER
3) 16" FIR WITH HEALED FACE
AND ROSEBURG RESOURCES TAG DATED 09/04
S 36-1/2' W - 3.5' TO NAIL IN SIDE CENTER
4) 12" FIR WITH HEALED FACE
AND ROSEBURG RESOURCES TAG DATED 09-04
N 55° W - 14.8' TO NAIL IN SIDE CENTER
5) 47" FIR WITH HEALED FACE
AND ROSEBURG RESOURCES TAG DATED 09-04
N 08° E - 33.8' TO NAIL IN SIDE CENTER

- (148105)**
NORTH 1/4 CORNER SECTION 15
FOUND 3-1/4" BRASS CAP
STAMPED BLM 2005
BT REFERENCES:
4) 13" HEMLOCK WITH VISIBLE SCRIBE
AND BLM TAG DATED 09/05
S 68° E - 4.6' TO NAIL IN SIDE CENTER
5) 7" HEMLOCK WITH VISIBLE SCRIBE
AND BLM TAG DATED 09/05
S 36° W - 6.9' TO NAIL IN SIDE CENTER

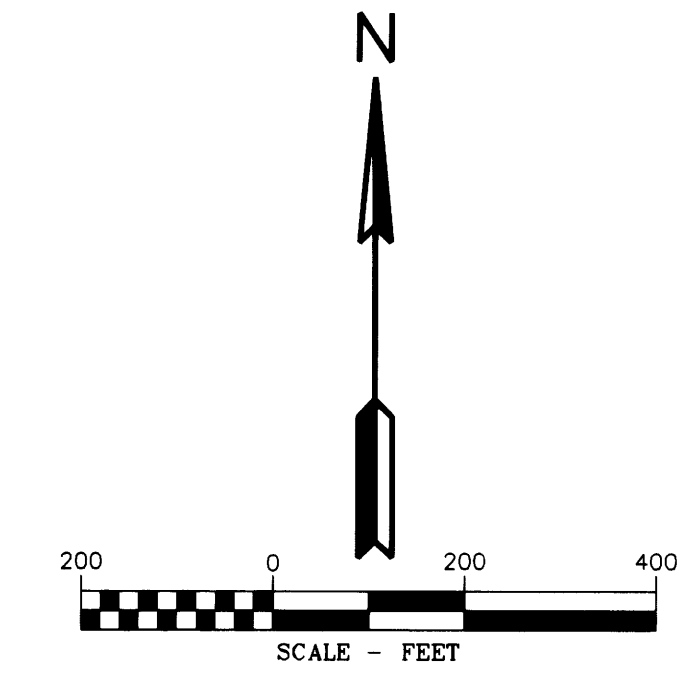
LEGEND

- SET 5/8" X 24" REBAR WITH 1 1/4" YELLOW PLASTIC CAP (KLEIN & ASSOC. ILS 59002)
- SET 5/8" X 24" REBAR WITH 1 1/4" YELLOW PLASTIC CAP (KITZ 1853LS)
- ⊙ FOUND MONUMENT AS NOTED (SEE CORNER NOTES)
- COMPUTED POINT, NOT MONUMENTED
- ⊠ FOUND QUARTER CORNER
SEE CORNER NOTES
- ⊠ FOUND SECTION CORNER
SEE CORNER NOTES
- ⊠ COMPUTED QUARTER CORNER
- ⊠ COMPUTED SECTION CORNER
- ⑩ POINT NUMBER
- PROPOSED ALIGNMENT
- - - - - TEMPORARY CONSTRUCTION EASEMENT
- TEMPORARY WORK AREA



AREA SECTION 15

TEMPORARY CONSTRUCTION EASEMENT	3.15 ACRES
TEMPORARY WORK AREA	0.24 ACRES



LINE TABLE

Line #	Direction	Length
L1	S22°35'59"E	719.34
L2	S34°22'57"E	59.56
L3	S55°37'03"W	10.00
L4	S34°22'57"E	58.53
L5	S46°43'10"E	49.99
L6	S46°43'10"E	25.85
L7	S46°43'10"E	50.00
L8	S43°13'29"W	30.13
L9	S46°46'31"E	50.00
L10	N43°13'29"E	30.08
L11	S43°13'29"W	30.05
L12	S46°46'31"E	50.00
L13	N43°13'29"E	30.00
L14	N65°15'07"W	515.05
L15	S89°37'06"W	87.35
L16	N0°23'12"W	50.00
L17	S89°36'48"W	100.00
L18	S68°04'32"W	61.88
L19	S48°11'24"E	61.82
L20	S37°07'19"E	19.66

REGISTERED
PROFESSIONAL
LAND SURVEYOR



OREGON
JULY 13 1979
RICHARD R. KITZ
1853
Expires 6-30-2015

REGISTERED
PROFESSIONAL
LAND SURVEYOR



OREGON
JULY 12 2005
JAMES M. KLEIN
59002
Expires 6-30-2015




EASTSIDE CONSULTANTS, INC.
ENGINEERING SURVEYING
1309 N.W. 22nd St., Suite 200
Portland, Oregon 97210
Phone: 503-281-0977
Fax: 503-281-0978



Klein & Associates, Inc.
ENGINEERING SURVEYING PLANNING
1411 13th Street • Hood River, OR 97031
TEL: 541-386-3322 • FAX: 541-386-2515

PACIFIC CONNECTOR GAS PIPELINE PROJECT
PACIFIC CONNECTOR GAS PIPELINE, LP
SECTION 15
RECORD OF SURVEY
TOWNSHIP 29 SOUTH, RANGE 9 WEST, W.M.
DOUGLAS COUNTY, OREGON



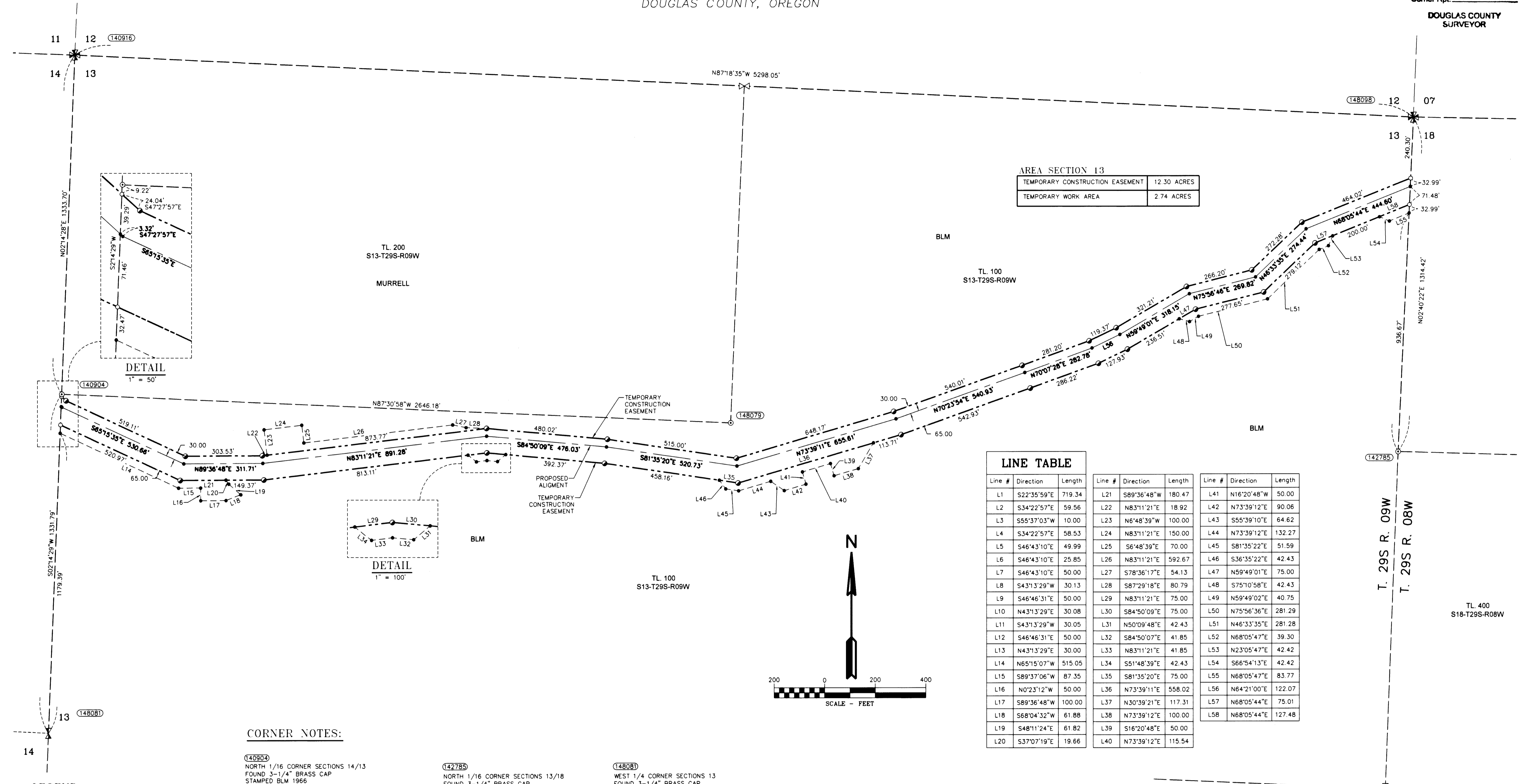
DRAWN BY: LJS	DATE: 09-16-2014	ISSUED FOR BID:	SCALE: 1" = 200'
CHECKED BY:	DATE:	ISSUED FOR CONSTRUCTION:	
APPROVED BY:	DATE:	DRAWING NUMBER:	SHEET 2 OF 3

RECORD OF SURVEY

LOCATED IN
TOWNSHIP 29 SOUTH, RANGE 9 WEST, W.M.
DOUGLAS COUNTY, OREGON

FILED
Date: 10-1-2014 By: JC
This survey consists of:
Map: M1166-18A-C
Narrative:
Corner Rpt:

DOUGLAS COUNTY
SURVEYOR

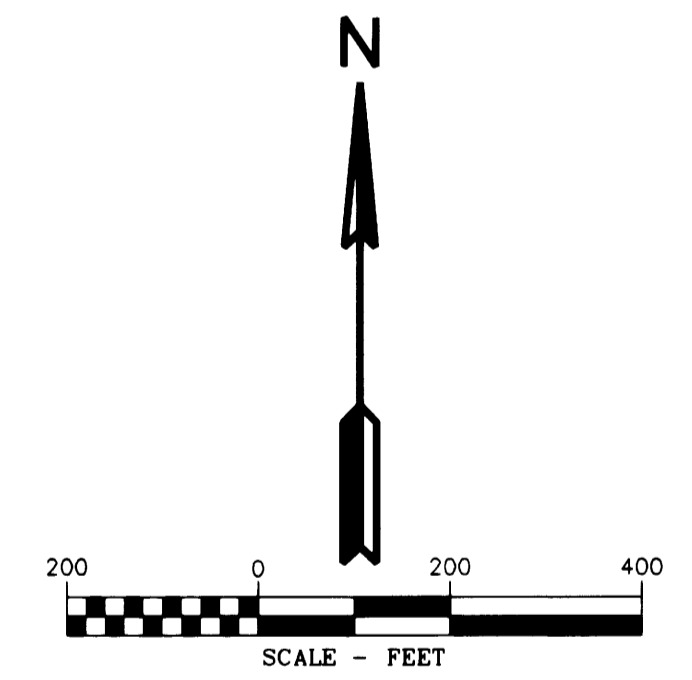


AREA SECTION 13

TEMPORARY CONSTRUCTION EASEMENT	12.30 ACRES
TEMPORARY WORK AREA	2.74 ACRES

LINE TABLE

Line #	Direction	Length	Line #	Direction	Length	Line #	Direction	Length
L1	S22°35'59"E	719.34	L21	S89°36'48"W	180.47	L41	N16°20'48"W	50.00
L2	S34°22'57"E	59.56	L22	N83°11'21"E	18.92	L42	N73°39'12"E	90.06
L3	S55°37'03"W	10.00	L23	N6°48'39"W	100.00	L43	S55°39'10"E	64.62
L4	S34°22'57"E	58.53	L24	N83°11'21"E	150.00	L44	N73°39'12"E	132.27
L5	S46°43'10"E	49.99	L25	S6°48'39"E	70.00	L45	S81°35'22"E	51.59
L6	S46°43'10"E	25.85	L26	N83°11'21"E	592.67	L46	S36°35'22"E	42.43
L7	S46°43'10"E	50.00	L27	S78°36'17"E	54.13	L47	N59°49'02"E	75.00
L8	S43°13'29"E	30.13	L28	S87°29'18"E	80.79	L48	S75°10'58"E	42.43
L9	S46°46'31"E	50.00	L29	N83°11'21"E	75.00	L49	N59°49'02"E	40.75
L10	N43°13'29"E	30.08	L30	S84°50'09"E	75.00	L50	N75°56'36"E	281.29
L11	S43°13'29"E	30.05	L31	N50°09'48"E	42.43	L51	N46°33'35"E	281.28
L12	S46°46'31"E	50.00	L32	S84°50'07"E	41.85	L52	N68°05'47"E	39.30
L13	N43°13'29"E	30.00	L33	N83°11'21"E	41.85	L53	N23°05'47"E	42.42
L14	N65°15'07"W	515.05	L34	S51°48'39"E	42.43	L54	S66°54'13"E	42.42
L15	S89°37'06"W	87.35	L35	S81°35'20"E	75.00	L55	N68°05'47"E	83.77
L16	N0°23'12"W	50.00	L36	N73°39'11"E	558.02	L56	N64°21'00"E	122.07
L17	S89°36'48"W	100.00	L37	N30°39'21"E	117.31	L57	N68°05'44"E	75.01
L18	S68°04'32"W	61.88	L38	N73°39'12"E	100.00	L58	N68°05'44"E	127.48
L19	S48°11'24"E	61.82	L39	S16°20'48"E	50.00			
L20	S37°07'19"E	19.66	L40	N73°39'12"E	115.54			




CORNER NOTES:

- (140904)** NORTH 1/16 CORNER SECTIONS 14/13
FOUND 3-1/4" BRASS CAP
STAMPED BLM 1966
BT REFERENCES:
1) 14" OAK WITH TAG DATED 9/66
N 67° E - 43.5'
2) 15" FIR WITH HEALED FACE
AND TAG DATED 6/02
S 08° E - 18.4'
- (140916)** NORTHWEST CORNER SECTIONS 13
FOUND 2-1/2" BRASS CAP
STAMPED COUNTY SURVEYOR 1958
BT REFERENCES:
1) 19.5" DEAD FIR WITH TAG DATED 1/63
N 45° E - 3.0'
2) 15" FIR WITH HEALED FACE
AND TAG DATED 2007
N 81° E - 12.7' TO NAIL IN SIDE CENTER
3) 13" FIR WITH HEALED FACE
AND TAG DATED 2007
S 59-1/4° E - 46.5' TO NAIL IN SIDE CENTER
4) 15" FIR WITH HEALED FACE
AND TAG DATED 2007
N 41-3/4° W - 32.5' TO NAIL IN SIDE CENTER
- (142785)** NORTH 1/16 CORNER SECTIONS 13/18
FOUND 3-1/4" BRASS CAP
STAMPED BLM 2002
BT REFERENCES:
1) 11-1/2" FIR WITH HEALED FACE
AND TAG DATED 7/02
S 32° E - 19.8' TO NAIL IN SIDE CENTER
2) 13" FIR WITH HEALED FACE
AND TAG DATED 7/02
S 60° W - 13.0' TO NAIL IN SIDE CENTER
- (148079)** CENTER-NORTH 1/16 CORNER SECTION 13
FOUND 3-1/4" BRASS CAP
STAMPED BLM 2002
BT REFERENCES:
1) 14" FIR WITH HEALED FACE
AND TAG DATED 7/02
S 60° E - 21.5' TO NAIL SIDE CENTER
2) 13" FIR WITH HEALED FACE
AND TAG DATED 7/02
S 48° W - 6.3' TO NAIL SIDE CENTER
- (148080)** WEST 1/4 CORNER SECTIONS 13
FOUND 3-1/4" BRASS CAP
STAMPED BLM 1966
BT REFERENCES:
1) 32" FIR WITH OLD TAG
N 10° E - 39.6'
2) 11.5" FIR WITH HEALED FACE
AND TAG DATED 6/02
N 70° W - 19.2' TO NAIL SIDE CENTER
- (148099)** NORTHEAST CORNER SECTION 13
FOUND 2-1/2" BRASS CAP
STAMPED COUNTY SURVEYOR 1966
BT REFERENCES:
1) 8.5" FIR WITH HEALED FACE
AND TAG DATED 7/02
N 46° E - 17.5' TO NAIL IN SIDE CENTER
2) 31" CEDAR WITH HEALED FACE
AND TAG DATED 7/02
S 17° E - 36.3'
3) 12.5" FIR WITH HEALED FACE
AND TAG DATED 07/02
S 40° W - 39.5' TO NAIL IN SIDE CENTER
4) 15.5" FIR WITH HEALED FACE
AND TAG DATED 07/02
N 14° W - 11.7' TO NAIL IN SIDE CENTER

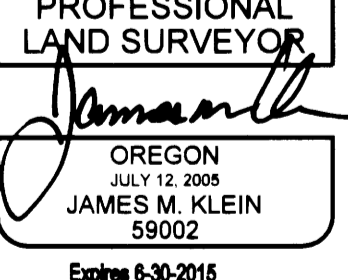
- ### LEGEND
- SET 5/8" x 24" REBAR WITH 1 1/4" YELLOW PLASTIC CAP (KLEIN & ASSOC LS 59002)
 - SET 5/8" x 24" REBAR WITH 1 1/4" YELLOW PLASTIC CAP (KITZ 1853LS)
 - FOUND MONUMENT AS NOTED (SEE CORNER NOTES)
 - COMPUTED POINT, NOT MONUMENTED
 - ⊗ FOUND QUARTER CORNER
SEE CORNER NOTES
 - ⊗ FOUND SECTION CORNER
SEE CORNER NOTES
 - ⊗ COMPUTED QUARTER CORNER
 - ⊗ COMPUTED SECTION CORNER
 - POINT NUMBER
 - PROPOSED ALIGNMENT
 - - - - - TEMPORARY CONSTRUCTION EASEMENT
 - - - - - TEMPORARY WORK AREA

REGISTERED
PROFESSIONAL
LAND SURVEYOR

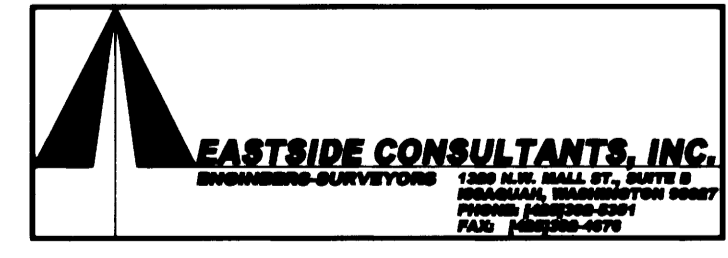


OREGON
JULY 15 1978
RICHARD R. KITZ
1853
Expires 6-30-2015


REGISTERED
PROFESSIONAL
LAND SURVEYOR



OREGON
JULY 12 2000
JAMES M. KLEIN
59002
Expires 6-30-2015




EASTSIDE CONSULTANTS, INC.
SURVEYING • PLANNING • ENGINEERING



Klein & Associates, Inc.
ENGINEERING • SURVEYING • PLANNING
1411 13th Street - Hood River, OR 97031
TEL: 541-386-3322 • FAX: 541-386-2615

PACIFIC CONNECTOR GAS PIPELINE PROJECT
PACIFIC CONNECTOR GAS PIPELINE, LP
SECTION 13
RECORD OF SURVEY
TOWNSHIP 29 SOUTH, RANGE 9 WEST, W.M.
DOUGLAS COUNTY, OREGON



DRAWN BY: LJS	DATE: 09-16-2014	ISSUED FOR BID:	SCALE: 1" = 200'
CHECKED BY:	DATE:	ISSUED FOR CONSTRUCTION:	
APPROVED BY:	DATE:	DRAWING NUMBER:	SHEET 3 OF 3