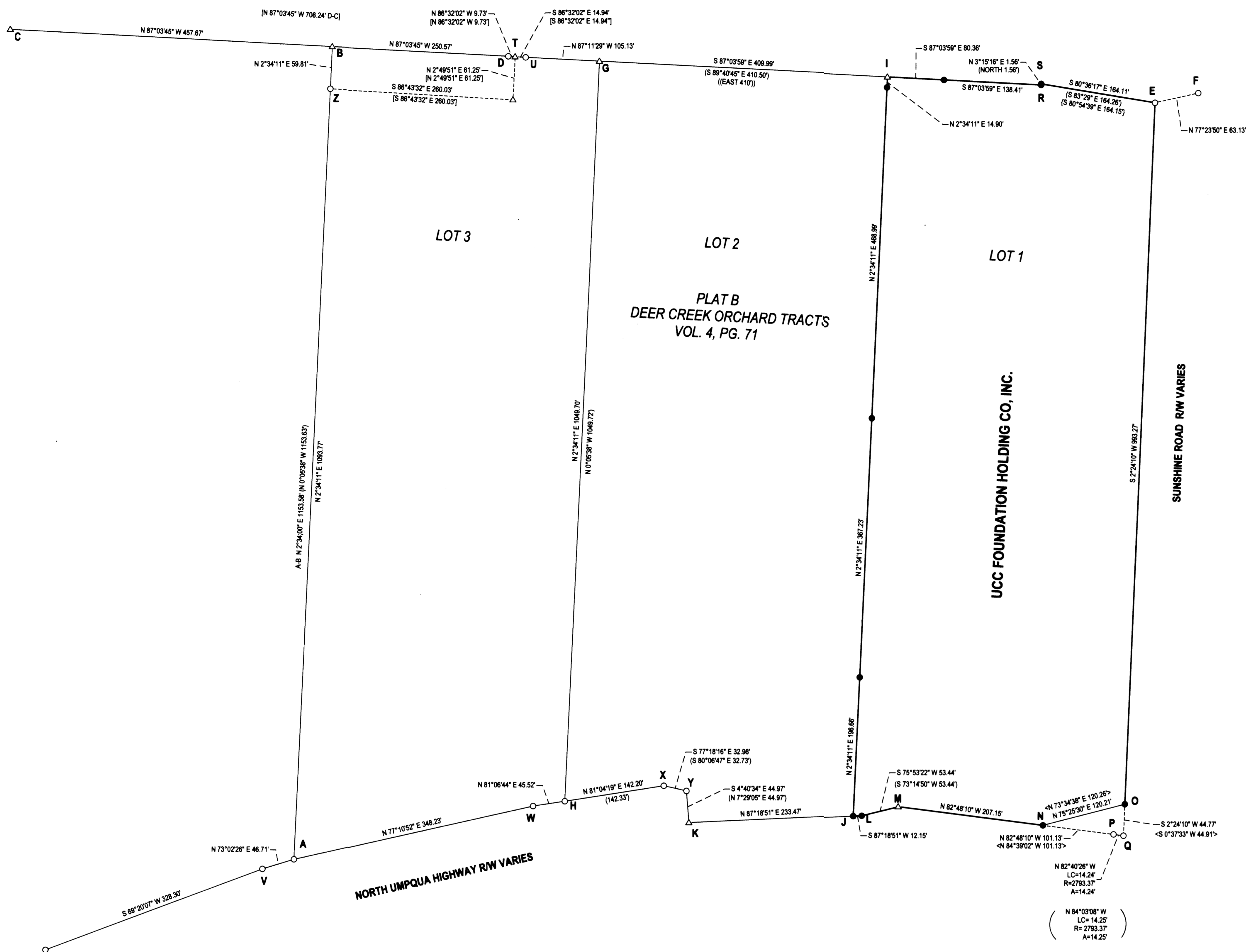


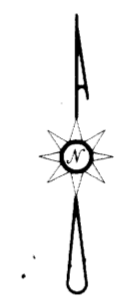
FILED
 Date: 10/1/2014 By: hwt
 This survey consists of:
 Map: M166-16
 Narrative:
 Corner Repl.:
 DOUGLAS COUNTY
 SURVEYOR



T-G S 87°06'34" E 120.07' (EAST 120')
 U-F S 87°04'48" E 957.79' (S 87°05'15" E 957.39')
 I-R S 87°03'59" E 218.77' (S 89°40'45" E 219.04')
 E-Q S 2°24'10" W 1308.05' (S 0°12'10" E 1038.39')
 V-W N 76°41'30" E 394.83' (N 74°05'27" E 394.97')
 W-X N 81°04'54" E 187.72' (N 78°29'05" E 187.90')
 K-L N 87°18'51" E 245.62' (N 84°42' E 245.52')
 M-P S 82°48'10" E 308.28' (S 85°26'42" E 308.32')
 M-Y 301.53' (301.57')

NOTE: POINT "T" LANDS IN A POND SO REFERENCE MONUMENTS WERE SET BOTH EAST AND SOUTH OF ACTUAL CORNER AS SHOWN.

BEARINGS ARE GRID, NAD83, OREGON SOUTH ZONE. DISTANCES CONVERTED TO GROUND



LEGEND

- FOUND 5/8" IRON ROD UNLESS OTHERWISE NOTED
- SET 5/8"x30" IRON ROD w/CAP STAMPED "HIBBS-LS 52989"
- △ CALCULATED POSITION
- () RECORD PER M90-19
- [] RECORD PER M149-28
- { } RECORD PER M137-59
- <> RECORD PER INST. NO. 2001-14855
- (()) RECORD PER PLAT B DEER CREEK ORCHARD TRACTS, VOL. 4, PG.71

FIELD CREW: NEIL HIBBS, SCOTT THOMPSON, ASHLEY MARTIN-ELLIOTT
 EQUIPMENT: TRIMBLE R-8 GPS RECEIVER AND BASE, NIKON DTM-522 TOTAL STATION
 OFFICE: NEIL HIBBS
 DRAFTING: NEIL HIBBS

NARRATIVE:
 THE PURPOSE OF THIS SURVEY WAS TO MONUMENT THE PROPERTY DESCRIBED IN INSTRUMENT NO. 2014-2443 OF THE DEED RECORDS OF DOUGLAS COUNTY, OREGON. POINT "B" WAS CALCULATED ON AN EXTENSION OF LINE "A-Z", AT A POINT THAT INTERSECTS LINE "C-D". POINT "G" WAS CALCULATED AT AN INTERSECTION OF LINE "D-F" (AS THIS LINE WAS STRAIGHT PER M90-19) AND A LINE THAT EXTENDS NORTHERLY FROM POINT "H", PARALLEL TO LINE "A-Z" PER BOTH M90-19 AND THE ORIGINAL PLAT B- DEER CREEK ORCHARD TRACTS. POINT "I" IS PROPORTIONED BETWEEN POINTS "G" AND "R" PER M90-19. POINT "S" IS SET AT RECORD ANGLE AND DISTANCE FROM LINE "R-G". POINT "M" WAS CALCULATED AT PROPORTIONED DISTANCE- DISTANCE INTERSECTION BETWEEN POINTS "Y" AND "P". POINT "K" WAS CALCULATED AT RECORD ANGLE FROM LINE "Y-X" AND RECORD DISTANCE FROM "Y". POINT "L" WAS SET AT RECORD ANGLE FROM LINE "M-P" AT RECORD DISTANCE FROM POINT "M". POINT "J" WAS SET ON A LINE RUNNING PARALLEL TO LINE "G-H" FROM POINT "I" AT THE INTERSECTION WITH LINE "K-L". POINT "N" WAS SET AT RECORD DISTANCE FROM POINT "P", ON LINE "P-M". POINT "O" WAS SET ON LINE "Q-W" AT RECORD ANGLE FROM LINE "N-P".

SURVEY		REGISTERED PROFESSIONAL LAND SURVEYOR
LYING IN THE SW 1/4 SEC. 15, T27S, R5W WILLAMETTE MERIDIAN, DOUGLAS COUNTY, OREGON		
CLIENT:	SURVEYOR:	 OREGON JANUARY 13, 1989 F. NEIL HIBBS 52989 EXPIRATION DATE 02/28/15
UCC FOUNDATION HOLDING CO. INC. 3019 NW STEWART PARKWAY SUITE 304 #125 ROSEBURG, OR. 97471	NEIL LAND SURVEYING, INC. HIBBS 4781 LOOMIS AVE. SE. ROSEBURG, OR. 97471 PHONE: 503-687-0394 FAX: 503-687-0398 WWW.NEILHIBBS.COM	
DWG SCALE: 1"=80'	JOB NO.: 00946-05	DATE: SEPTEMBER 2014