

CORNER DESCRIPTIONS:

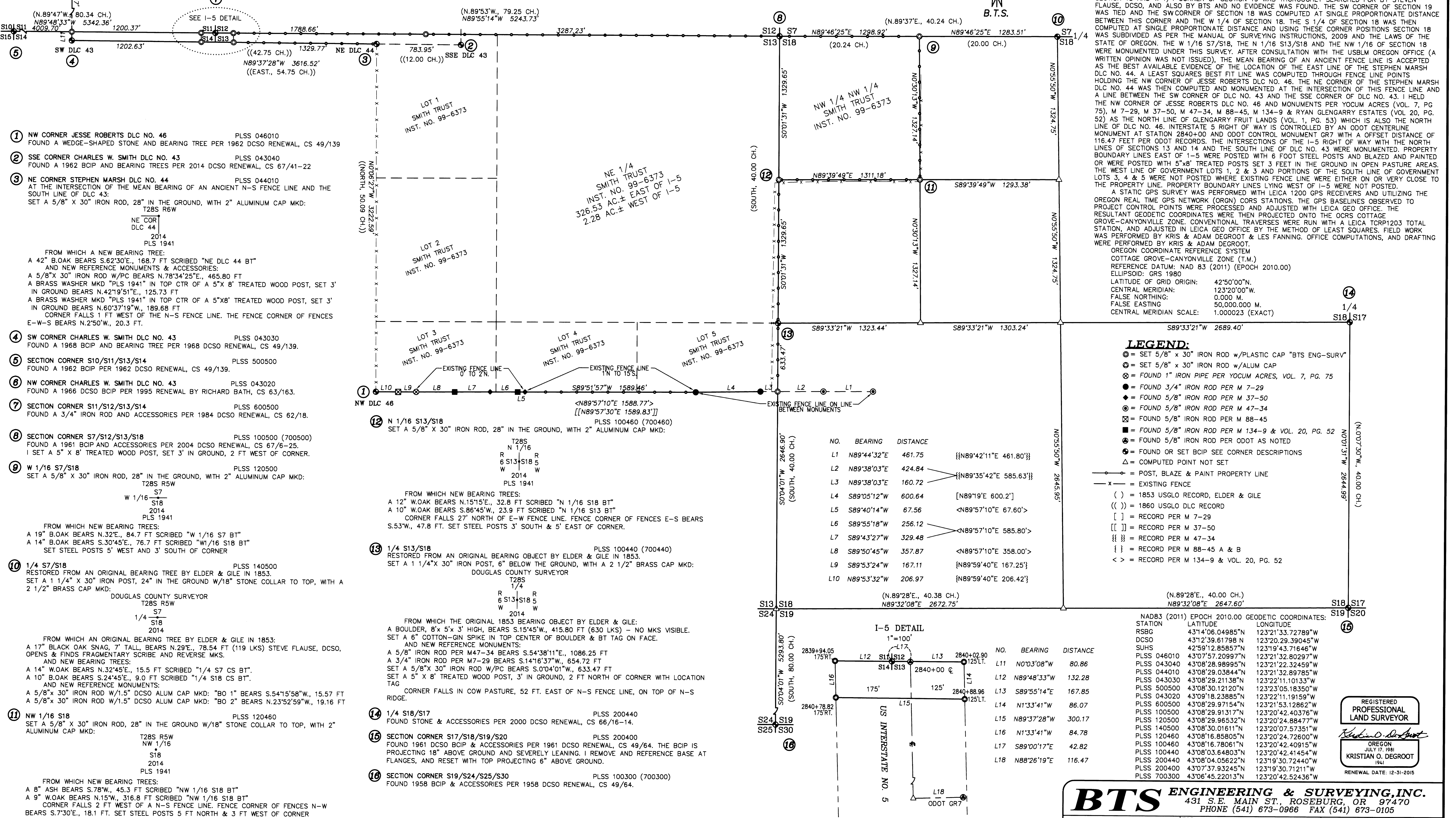
ALL NEW BEARING TREES HAVE DOUBLE BLAZED FACES WITH A BRASS WASHER STAMPED "PLS 1941" NAILED INTO THE LOWER BLAZE. BEARINGS ARE TAKEN TO THE CENTER OF THE TREE AT THE ROOT CROWN AND DISTANCES ARE MEASURED TO A NAIL IN THE ROOT CROWN AT THE SIDE AND CENTER OF THE TREE WITH A TOTAL STATION. ALL BEARING TREES HAVE A 6" RED BAND PAINTED AROUND THE TREE AND THE BLAZED FACE PAINTED RED AND BEARING TREE SIGNS NAILED TO THE TREE. ALL NEW 5/8" x 30" IRON ROD REFERENCE MONUMENTS HAVE A PLASTIC CAP STAMPED "BTS ENG-SURV".

RECORD OF SURVEY LOCATED IN SECTION 18, T28S, R5W, W.M. SECTION 13 & 14, T28S, R6W, W.M. DOUGLAS COUNTY, OREGON

NARRATIVE:

THE PURPOSE OF THIS SURVEY IS TO LOCATE, MONUMENT AND POST THE BOUNDARIES OF THE NW 1/4 NW 1/4 OF SECTION 18 AND ALSO LOTS 1, 2, 3, 4, 5 AND THE NE 1/4 OF SECTION 13 AND ALSO THAT PORTION OF THE CHARLES W. SMITH D.L.C. NO. 43 LYING IN SECTIONS 13 & 14, ALL AS DESCRIBED IN INSTRUMENT NO. 1993-6373 OF THE RECORDS OF DOUGLAS COUNTY. THE NW, E 1/4 AND SE CORNERS OF SECTION 18 ARE MONUMENTED ORIGINAL CORNERS. ORIGINAL CORNER EVIDENCE WAS RECOVERED BY STEVEN FLAUSE, DCSO, AT THE N 1/4 AND W 1/4 CORNERS OF SECTION 18 AND THESE CORNERS WERE MONUMENTED IN THEIR ORIGINAL POSITIONS BY BTS UNDER THIS SURVEY. ORIGINAL EVIDENCE OF THE S 1/4 & SW CORNER OF SECTION 18 AND W 1/4 CORNER OF SECTION 19 WAS THOROUGHLY SEARCHED FOR BY STEVEN FLAUSE, DCSO, AND ALSO BY BTS AND NO EVIDENCE WAS FOUND. THE SW CORNER OF SECTION 19 WAS TIED AND THE SW CORNER OF SECTION 18 WAS COMPUTED AT SINGLE PROPORTIONATE DISTANCE BETWEEN THIS CORNER AND THE W 1/4 OF SECTION 18. THE S 1/4 OF SECTION 18 WAS THEN COMPUTED AT SINGLE PROPORTIONATE DISTANCE AND USING THESE CORNER POSITIONS SECTION 18 WAS SUBDIVIDED AS PER THE MANUAL OF SURVEYING INSTRUCTIONS, 2009 AND THE LAWS OF THE STATE OF OREGON. THE W 1/16 S7/S18, THE N 1/16 S13/S18 AND THE NW 1/16 OF SECTION 18 WERE MONUMENTED UNDER THIS SURVEY. AFTER CONSULTATION WITH THE USBLM OREGON OFFICE (A WRITTEN OPINION WAS NOT ISSUED), THE MEAN BEARING OF AN ANCIENT FENCE LINE IS ACCEPTED AS THE BEST AVAILABLE EVIDENCE OF THE LOCATION OF THE EAST LINE OF THE STEPHEN MARSH D.L.C. NO. 44. A LEAST SQUARES BEST FIT LINE WAS COMPUTED THROUGH FENCE LINE POINTS HOLDING THE NW CORNER OF JESSE ROBERTS D.L.C. NO. 46, THE NE CORNER OF THE STEPHEN MARSH D.L.C. NO. 44 WAS THEN COMPUTED AND MONUMENTED AT THE INTERSECTION OF THIS FENCE LINE AND A LINE BETWEEN THE SW CORNER OF D.L.C. NO. 43 AND THE SSE CORNER OF D.L.C. NO. 43. I HELD THE NW CORNER OF JESSE ROBERTS D.L.C. NO. 46 AND MONUMENTS PER YOCUM ACRES (VOL. 7, PG. 75), M 7-29, M 37-50, M 47-34, M 88-45, M 134-9 & RYAN GLENGARRY ESTATES (VOL. 20, PG. 52) AS THE NORTH LINE OF GLENGARRY FRUIT LANDS (VOL. 1, PG. 53) WHICH IS ALSO THE NORTH LINE OF D.L.C. NO. 46. INTERSTATE 5 RIGHT OF WAY IS CONTROLLED BY AN ODOT CENTERLINE MONUMENT AT STATION 2840+00 AND ODOT CONTROL MONUMENT GR7 WITH AN OFFSET DISTANCE OF 116.47 FEET PER ODOT RECORDS. THE INTERSECTIONS OF THE I-5 RIGHT OF WAY WITH THE NORTH LINES OF SECTIONS 13 AND 14 AND THE SOUTH LINE OF D.L.C. NO. 43 WERE MONUMENTED. PROPERTY BOUNDARY LINES EAST OF I-5 WERE POSTED WITH 6 FOOT STEEL POSTS AND BLAZED AND PAINTED OR WERE POSTED WITH 5'x8" TREATED POSTS SET 3 FEET IN THE GROUND IN OPEN PASTURE AREAS. THE WEST LINE OF GOVERNMENT LOTS 1, 2 & 3 AND PORTIONS OF THE SOUTH LINE OF GOVERNMENT LOTS 3, 4 & 5 WERE NOT POSTED WHERE EXISTING FENCE LINE WERE EITHER ON OR VERY CLOSE TO THE PROPERTY LINE. PROPERTY BOUNDARY LINES LYING WEST OF I-5 WERE NOT POSTED. A STATIC GPS SURVEY WAS PERFORMED WITH LEICA 1200 GPS RECEIVERS AND UTILIZING THE OREGON REAL TIME GPS NETWORK (ORGN) CORS STATIONS. THE GPS BASELINES OBSERVED TO PROJECT CONTROL POINTS WERE PROCESSED AND ADJUSTED WITH LEICA GEO OFFICE. THE RESULTANT GEODETIC COORDINATES WERE THEN PROJECTED ONTO THE OCRS COTTAGE GROVE-CANYONVILLE ZONE. CONVENTIONAL TRAVERSES WERE RUN WITH A LEICA TCPR1203 TOTAL STATION, AND ADJUSTED IN LEICA GEO OFFICE BY THE METHOD OF LEAST SQUARES. FIELD WORK WAS PERFORMED BY KRIS & ADAM DEGROOT & LES FANNING. OFFICE COMPUTATIONS, AND DRAFTING WERE PERFORMED BY KRIS & ADAM DEGROOT. OREGON COORDINATE REFERENCE SYSTEM COTTAGE GROVE-CANYONVILLE ZONE (T.M.) REFERENCE DATUM: NAD 83 (2011) (EPOCH 2010.00) ELLIPSOID: GRS 1980 LATITUDE OF GRID ORIGIN: 42°50'00"N. CENTRAL MERIDIAN: 123°20'00"W. FALSE NORTHING: 0.000 M. FALSE EASTING: 50,000,000 M. CENTRAL MERIDIAN SCALE: 1.000023 (EXACT)

FILED Date: 6/11/2014 By: NUR This Survey Consists of: Map: M 166-12 Narrative: Corner Rpt.: DOUGLAS COUNTY SURVEYOR



LEGEND:

- Legend items: SET 5/8" x 30" IRON ROD w/PLASTIC CAP "BTS ENG-SURV", FOUND 1" IRON PIPE PER YOCUM ACRES, FOUND 3/4" IRON ROD PER M 7-29, FOUND 5/8" IRON ROD PER M 37-50, FOUND 5/8" IRON ROD PER M 47-34, FOUND 5/8" IRON ROD PER M 88-45, FOUND 5/8" IRON ROD PER M 134-9 & VOL. 20, PG. 52, FOUND 5/8" IRON ROD PER ODOT AS NOTED, FOUND OR SET BCIP SEE CORNER DESCRIPTIONS, COMPUTED POINT NOT SET, POST, BLAZE & PAINT PROPERTY LINE, EXISTING FENCE, 1853 USGLO RECORD, ELDER & GILE, 1860 USGLO DLC RECORD, RECORD PER M 7-29, RECORD PER M 37-50, RECORD PER M 47-34, RECORD PER M 88-45 A & B, RECORD PER M 134-9 & VOL. 20, PG. 52

Table with columns: NO., BEARING, DISTANCE. Lists monument points L1 through L10 with their respective bearings and distances.

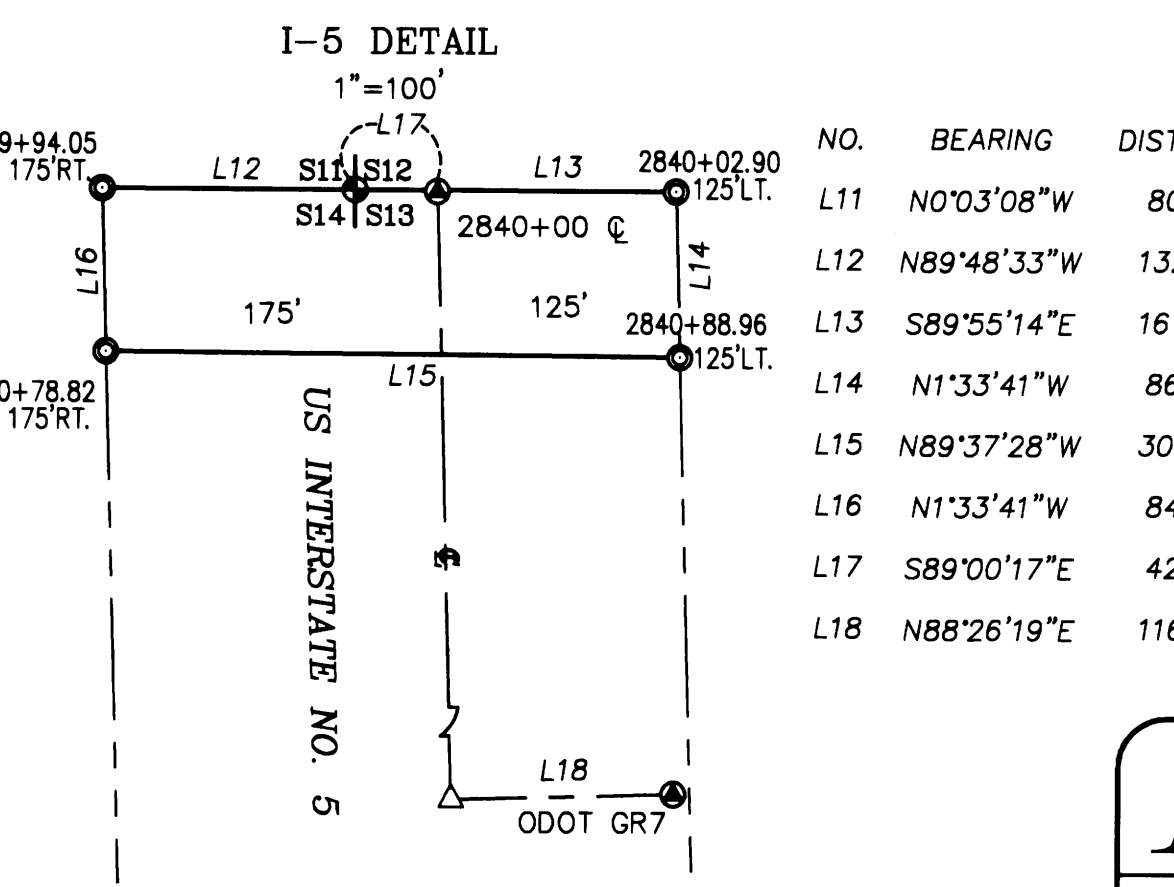


Table with columns: STATION, NAD83 (2011) EPOCH 2010.00 GEODETIC COORDINATES: LATITUDE, LONGITUDE. Lists station coordinates for S18, S17, S24, S19, S20, S25, S30.

REGISTERED PROFESSIONAL LAND SURVEYOR KRISTIAN O. DEGROOT

BTS ENGINEERING & SURVEYING, INC. 431 S.E. MAIN ST., ROSEBURG, OR 97470 PHONE (541) 673-0966 FAX (541) 673-0105

SCALE: 1" = 400' DATE: JUNE 5, 2014 FOR: EDWARD & FRANCES SMITH TRUST 3600 PARK RD APT H106 CHARLOTTE, NC 28209 JOB #: 14-022 FILE: SMITH PLAT.dwg SHEET 1 OF 1