

Date: 8-15-2013 by: JC  
This survey consists of:  
Map: M165-56  
Narrative:  
Corner Rpt:

DOUGLAS COUNTY  
SURVEYOR

# RECORD OF SURVEY OF SECTION 10, T. 31 S., R. 4 W. W. M. DOUGLAS COUNTY, OREGON - AUGUST 2013

MAP FILE M165-56

**NW CORNER SECT. 10**  
1976 DCSO 2 1/2" BRASS CAP UP 0.30' WITH  
3/4" IRON PIPE ALONG SIDE  
25" (32") D. FIR BT, N 79°W 60.0', SCAR VIS., TAG  
35" (44") D. FIR BT, S 20°W 54.0', BARK GONE, SCAR VIS., TAG  
15" (16") LAUREL BT, N 67°E 28.6', SCAR VIS., TAG  
9" D. FIR BT, N 71°E 17.4', SCAR VIS. TAG

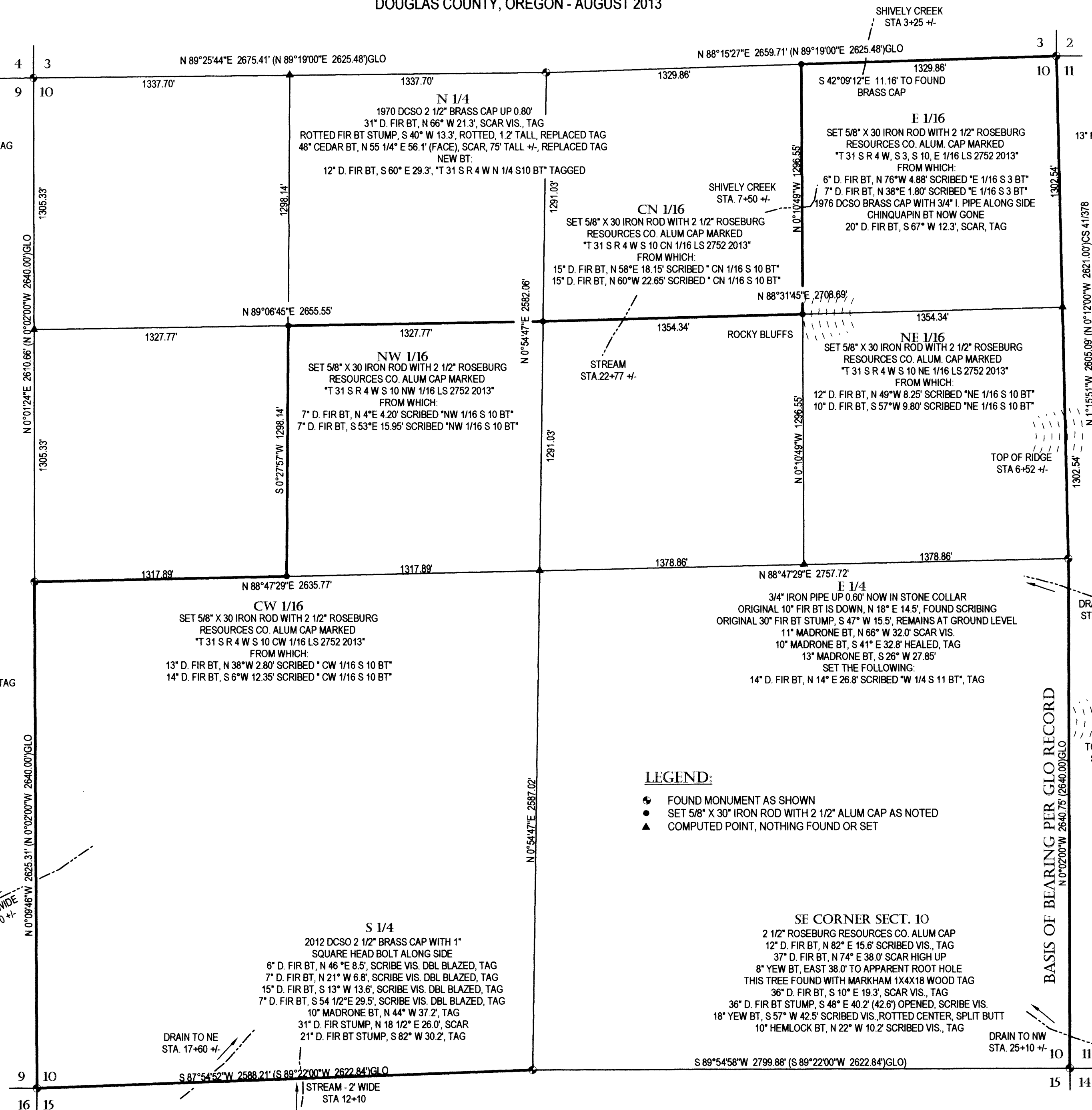
**NE CORNER SECT. 10**  
1976 DCSO 2 1/2" BRASS CAP UP 0.20'  
1 1/2" IRON PIPE ALONG SIDE  
43" D. FIR BT, N 1° W (N 10°10' W) 27.3', 2 TAGS  
31" FIR BT STUMP, S 5° E (S 13°40' E) 38.6' (36.6'), SCRIBE VIS.  
NEW B.T.S.  
13" MAPLE BT, N 50° E 2.73' TO FACE, "T 31 S R 4 W SW S2 BT", TAGGED  
12" D. FIR BT, S 55° E 19.48', "T 31 S R 4 W NW S11 BT", TAGGED

**NARRATIVE:**  
THIS SURVEY WAS COMPLETED TO SUBDIVIDE SECTION 10  
IN ACCORDANCE WITH THE 2009 MANUAL OF INSTRUCTIONS  
AND TO THEN RUN AND MARK THE LINES AS SHOWN. CORNERS  
WERE ESTABLISHED AS REQUESTED. THE BASIS OF BEARING  
WAS ESTABLISHED BETWEEN THE FOUND MARKERS AT THE  
SOUTHEAST CORNER AND EAST QUARTER CORNER OF THE  
SECTION. THE LINES IN BOLD WERE MARKED AS DIRECTED  
WITH BLAZES, FLAGGING AND STEEL POSTS ALL PAINTED  
RED IF THEY WERENT RED ALREADY.

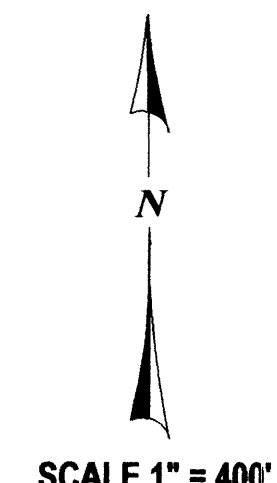
FIELD CREW: C. SWEEDEN AND E. WILDS  
EQUIPMENT: NIKON NIVO 3M W/ SUPPORT  
MAPPING AND CALC'S: C. SWEEDEN

**W 1/4**  
1976 DCSO 2 1/2" BRASS CAP UP 0.40' WITH  
3/4" IRON PIPE SOUTH OF CAP  
15" D. FIR BT, N 45°W 31.4', SCAR VIS., TAG  
11" LAURAL BT, S 26°W 9.0', SCAR VIS., TAG, DEAD  
17" LAUREL BT, N 15°W 34.5', SCAR VIS., TAG  
28" LAUREL BT, N 79°W 36.0', SCAR VIS., TAG  
9" LAUREL BT, N 47°W 17.0' (17.8'), SCAR VIS., TAG  
26" LAUREL BT, N 16°E (N 15 3/4') 26.45' (26.4), SCAR VIS. TAG

**SW CORNER SECT. 10**  
1966 DCSO 2 1/2" BRASS CAP UP 0.40'  
31" D. FIR BT, N 66°E 23.1', SCAR VIS., TAG  
51" D. FIR BT, S 57°W 11.2', SCAR VIS., TAG  
30" CEDAR BT, S 47°E 15.80', SCAR VIS., TAG  
18" D. FIR BT, N 14°W 29.0', SCAR VIS. TAG



- LEGEND:**
- FOUND MONUMENT AS SHOWN
  - SET 5/8" X 30" IRON ROD WITH 2 1/2" ALUM CAP AS NOTED
  - ▲ COMPUTED POINT, NOTHING FOUND OR SET



REGISTERED  
PROFESSIONAL  
LAND SURVEYOR  
*Carl A. Sweeden*  
OREGON  
CARL A. SWEEDEN  
2752  
JANUARY 16, 1996  
EXPIRES 6-30-14

**SURVEY FOR:**  
ROME CREEK TIMBER  
P. O. BOX 1088  
ROSEBURG, OREGON 97470

**Sweeden Land Surveying**  
Carl A. Sweeden  
P.L.S.  
Conventional & Global Positioning  
Surveying Systems  
558 S. E. Jackson St., Roseburg, OR. 97470  
Tel. 541-672-8344, Fax 541-672-1787

MAP FILE M165-56