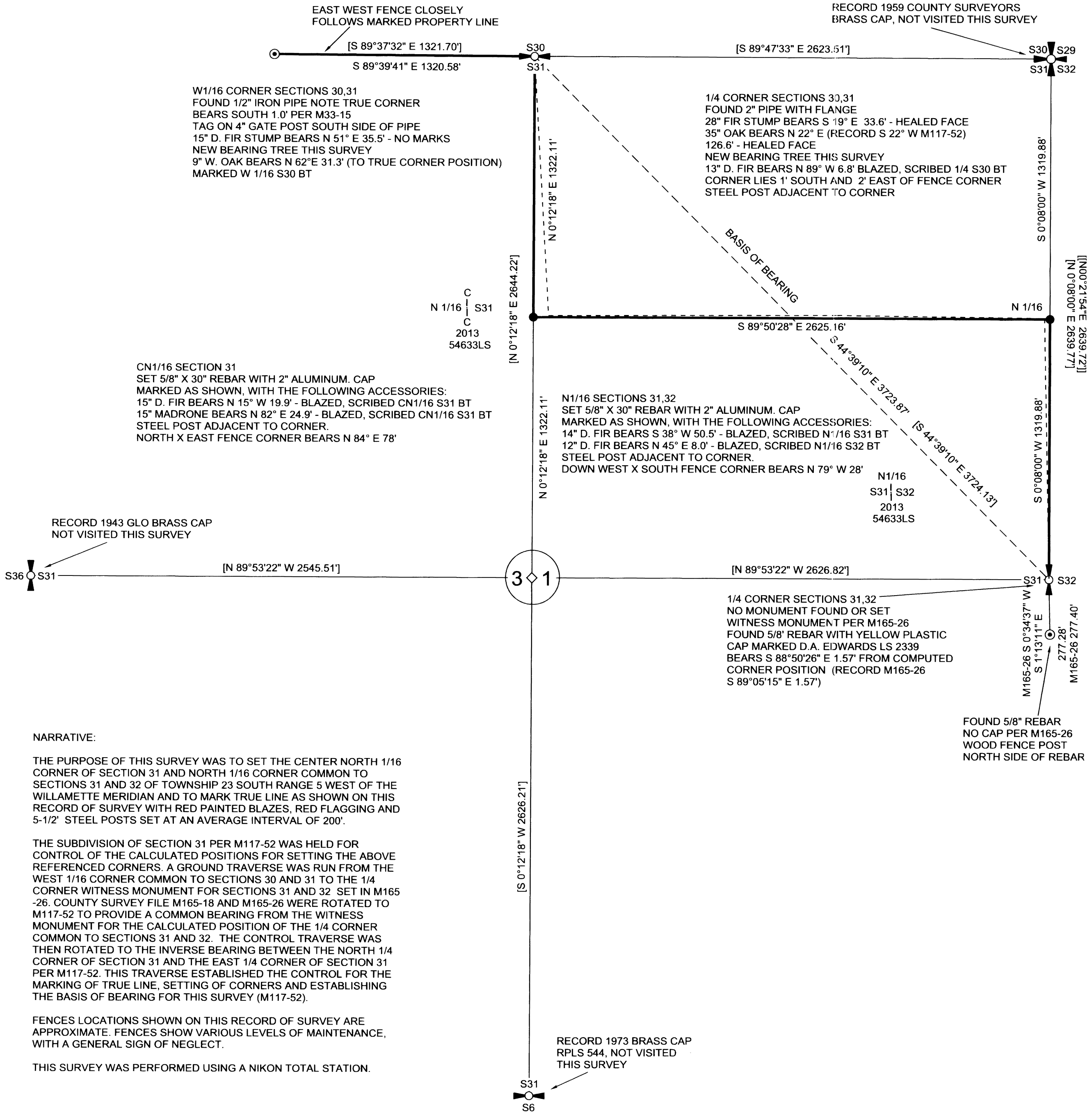
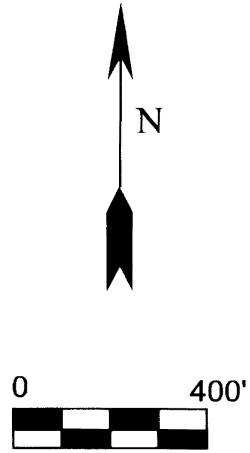


RECORD OF SURVEY  
 FOR: FRUIT GROWERS SUPPLY COMPANY &  
 GIUSTINA TREE FARM L.P.  
 NW1/4, NE1/4, SECTION 32, T.23 S., R.5 W., W.M.  
 DOUGLAS COUNTY, OREGON  
 18 JULY 2013

FILED  
 DATE: 8/6/2013 BY: RW  
 THIS SURVEY CONSISTS OF:  
 MAP: M165-54  
 NARRATIVE:  
 CORNER RPT: \_\_\_\_\_

DOUGLAS COUNTY  
 SURVEYOR



**NARRATIVE:**

THE PURPOSE OF THIS SURVEY WAS TO SET THE CENTER NORTH 1/16 CORNER OF SECTION 31 AND NORTH 1/16 CORNER COMMON TO SECTIONS 31 AND 32 OF TOWNSHIP 23 SOUTH RANGE 5 WEST OF THE WILLAMETTE MERIDIAN AND TO MARK TRUE LINE AS SHOWN ON THIS RECORD OF SURVEY WITH RED PAINTED BLAZES, RED FLAGGING AND 5-1/2" STEEL POSTS SET AT AN AVERAGE INTERVAL OF 200'.

THE SUBDIVISION OF SECTION 31 PER M117-52 WAS HELD FOR CONTROL OF THE CALCULATED POSITIONS FOR SETTING THE ABOVE REFERENCED CORNERS. A GROUND TRAVERSE WAS RUN FROM THE WEST 1/16 CORNER COMMON TO SECTIONS 30 AND 31 TO THE 1/4 CORNER WITNESS MONUMENT FOR SECTIONS 31 AND 32 SET IN M165-26. COUNTY SURVEY FILE M165-18 AND M165-26 WERE ROTATED TO M117-52 TO PROVIDE A COMMON BEARING FROM THE WITNESS MONUMENT FOR THE CALCULATED POSITION OF THE 1/4 CORNER COMMON TO SECTIONS 31 AND 32. THE CONTROL TRAVERSE WAS THEN ROTATED TO THE INVERSE BEARING BETWEEN THE NORTH 1/4 CORNER OF SECTION 31 AND THE EAST 1/4 CORNER OF SECTION 31 PER M117-52. THIS TRAVERSE ESTABLISHED THE CONTROL FOR THE MARKING OF TRUE LINE, SETTING OF CORNERS AND ESTABLISHING THE BASIS OF BEARING FOR THIS SURVEY (M117-52).

FENCES LOCATIONS SHOWN ON THIS RECORD OF SURVEY ARE APPROXIMATE. FENCES SHOW VARIOUS LEVELS OF MAINTENANCE, WITH A GENERAL SIGN OF NEGLECT.

THIS SURVEY WAS PERFORMED USING A NIKON TOTAL STATION.

- LEGEND**
- 1/4 CORNER OF RECORDED AS NOTED
  - SECTION CORNER OF RECORD AS NOTED
  - [ ] RECORD DATA M117-52
  - [ [ ] ] RECORD DATA M165-18
  - SET MONUMENT THIS SURVEY AS NOTED
  - ◇ CALCULATED C1/4 PER M117-52
  - FOUND MONUMENTED AS NOTED
  - EXISTING FENCES AS NOTED
  - LINE MARKED PER NARRATIVE

REGISTERED  
 PROFESSIONAL  
 LAND SURVEYOR  
*Ronald L. Rice*  
 OREGON  
 JULY 9, 2002  
 RONALD L. RICE  
 54633LS

EXPIRATION DATE: 12-31-2014

Northwest Land Surveying, Inc.  
 P. O. Box 2827  
 FLORENCE, OR 97439 541-997-9201

FILE NAME		
13-43.TRV		
SCALE	DATE	DRAWN BY
400 F/In	7-18-2013	RLR
JOB	REVISION	SHEET
RICE VALLEY	----	1/1

This map drawn with TRAVERSE PC Software