

**COUNTY SURVEYORS FILE DATA  
DO NOT REMOVE FROM OFFICE**

FILED  
Date: 6/19/2013 By: JE  
This survey consists of:  
Map: M165-36  
Narrative: CS 67/39  
Corner Rpt: CS 67/39-27  
CS 47/38-28  
DOUGLAS COUNTY  
SURVEYOR

**BOUNDARY LINE ADJUSTMENT SURVEY  
IN THE SOUTH 1/2 OF SECTION 26 AND THE  
NORTH 1/2 OF SECTION 35 T.21 S., R. 12 W., W.M.**

MAY 2013

**NARRATIVE:**

B.L.A. UNDERTAKEN AT THE REQUEST OF THE DOUGLAS COUNTY LAND DEPARTMENT. A SEARCH WAS MADE FOR ORIGINAL EVIDENCE OF GOVERNMENT CORNERS ON BOLONS ISLAND, NOTHING FOUND. I FOLLOWED PROCEDURES FOR RESTORATION OF LOST CORNERS AS OUTLINED BY THE 2009 MANUAL OF SURVEY INSTRUCTION 7-14 & 7-56. THE SW CORNER OF SEC. 26 WAS CALCULATED BY SINGLE PROPORTIONING BETWEEN THE NW CORNER OF SEC 26 AND THE 1/4 CORNER BETWEEN SEC.34 AND SEC 35. NO SURVEY TIES ON ORIGINAL SURVEYS MADE WEST OF THE SW CORNER OF 26 AND SURVEY EAST ENDED AT THE MEANDER CORNER ON EAST SIDE OF BOLONS ISLAND. THE 1/4 CORNER AND MEANDER CORNER ON BOLONS ISLAND ARE SET AT ORIGINAL RECORD DISTANCES TRUE EAST OF CALCULATED SW CORNER OF SEC. 26. THE 1/4 CORNER BETWEEN SEC.34 AND SEC.35 CALCULATED IN OREGON STATE GRID NAD83 FROM ST. HWY MAP 101-001B. THE NW CORNER OF SEC.26 HELD GRID COORDINATES AS SHOWN ON M153-34A-D. RESULTING SECTION LINES AGREE CLOSELY WITH RICHARD HINTZ M104-67. BASIS OF BEARING DETERMINED FROM ODOT CONTROL PTS 54 AND 56 TAKEN FROM ST. HWY. MAP 101-006B CALCULATED IN OREGON STATE GRID NAD 83. ALL COORDINATES AND DISTANCES ARE IN GRID, DIVIDE BY GRID FACTOR OF 0.99939130 FOR HORIZONTAL GROUND DISTANCES. ALL BEARINGS SHOWN IN GRID, ROTATE -2°27'57" TO TRUE. ONLY THE NORTH AND WEST LINES OF UNIT 2 WERE SURVEYED.

**SURVEY FOR  
DOUGLAS COUNTY LAND DEPARTMENT  
BY DOUGLAS COUNTY SURVEYORS OFFICE  
AND DOUGLAS COUNTY PUBLIC WORKS**

FIELD WORK: STEVE FLAUSE AND MIKE KOCH

OFFICE CALCULATIONS: RANDY SMITH

CHECKED BY: DON BEECROFT

ODOT CONTROL PT #54  
N 766783.881  
E 3970100.087  
5/8" I.R.

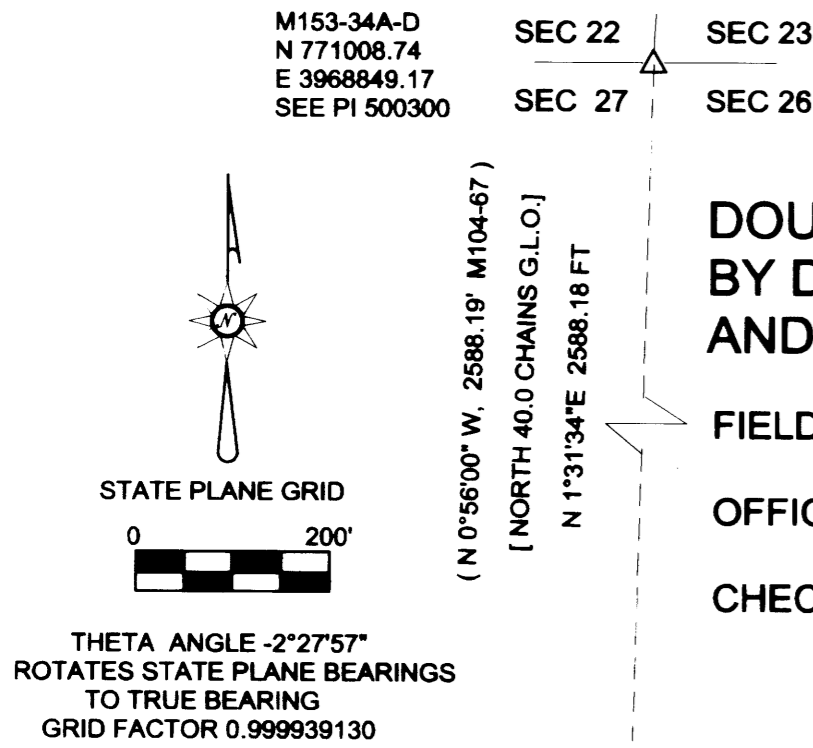
ROAD SEGMENT "A"- "B"		ROAD SEGMENT "B"- "F"		ROAD SEGMENT "B"- "C"	
S02°06'59"W	52.90'	S35°52'28"E	52.78'	S04°06'24"W	22.27'
S12°01'05"W	49.74'	S49°33'43"E	10.81'	S46°25'46"W	16.47'
S33°43'14"E	415.02'	S64°03'44"E	13.49'	S64°32'13"W	15.53'
		S76°38'29"E	38.55'	N87°39'17"W	84.60'
		S81°47'17"E	300.29'	S88°13'25"W	37.77'
		S85°22'00"E	136.21'	S82°46'52"W	41.38'
		S69°13'01"E	50.03'	S78°11'31"W	76.88'
		S52°20'36"E	38.27'	S85°54'37"W	136.90'
		S29°13'12"E	51.77'	S43°13'16"W	16.63'
		S11°57'32"E	49.04'	S19°51'56"E	14.43'
		S06°34'12"E	121.62'	S70°49'21"E	17.96'
		S16°22'46"E	53.51'	N88°37'47"E	101.15'
				S88°11'58"E	102.84'
				S81°10'46"E	61.86'
				S72°09'42"E	43.34'
				S60°57'42"E	63.51'
				S66°12'39"E	36.95'
				S76°41'46"E	29.38'
				S70°11'21"E	32.18'
				S37°13'59"E	25.91'
				S21°30'06"E	39.31'
				S46°18'18"E	31.00'
				N89°33'51"E	31.59'
				N61°24'46"E	46.28'
				N71°37'47"E	36.71'
				S71°45'21"E	37.48'
				S58°42'50"E	37.71'
				S43°21'36"E	31.47'
				S29°18'56"E	35.46'
				S18°21'48"E	50.78'
				S25°26'31"E	20.93'
				S30°49'26"E	32.87'

ROAD SEGMENT "C"- "D"

S30°51'12"E	11.82'
S14°16'58"E	24.59'
S20°58'35"W	21.60'
S59°38'26"W	22.23'
S74°42'23"W	119.21'
S83°05'35"W	47.98'
S89°23'43"W	25.55'
N77°56'53"W	21.98'
N62°38'19"W	28.33'
N48°26'06"W	77.97'
N56°12'37"W	30.80'
N73°39'53"W	28.19'
S86°25'40"W	30.95'
S75°36'36"W	79.30'
S67°16'08"W	29.09'
S55°55'40"W	25.47'
S50°53'02"W	23.05'
S55°09'07"W	21.40'
S60°11'25"W	25.03'

ROAD SEGMENT "D"- "E"

S60°11'26"W	53.43'
S74°18'57"W	30.18'
S85°49'26"W	55.96'
N85°56'10"W	68.39'
S89°03'29"W	61.09'
N83°16'56"W	63.76'
N71°56'52"W	32.95'
N63°09'02"W	41.80'



REGISTERED PROFESSIONAL LAND SURVEYOR  
*Randall W. Smith*  
OREGON  
Randall W. Smith  
July 25, 1990  
2469  
EXPIRES: June 30, 2014

**ACREAGE CALCULATED DIGITALLY  
FROM DOUGLAS COUNTY GIS MAPS**

ODOT CONTROL PT # 56  
N 766119.650  
E 3969947.318  
5/8" I.R.

(EAST, 2640.00 FT M104-67)  
[EAST 40.0 CHAINS GLO.]

S 87°32'03"E, 1989.88 FT. grid (1990.00 FT.)

APPROVAL  
*Keith L. Cubic* 6/19/13  
DOUGLAS COUNTY PLANNING DIRECTOR

PLANNING DEPARTMENT FILE # M13-001

CONVEYANCE INSTRUMENT # 2014-014319

RESTRICTIVE COVENANT # 2013-10422

**NOTE TRUE LOCATION  
OF UNDER GROUND  
WATER, SEWER AND  
POWER LINES UNKNOWN.  
LINES SHOWN ARE  
APPROX. ONLY.**

SURVEY TIES FROM 1/4 CORNER SEC. 26 & SEC. 35

LEGEND

△	CALCULATED POINT
○	FOUND AS NOTED
●	Set 2 1/2" B.C. ON A 1 1/2"x30" I.P.
●	5/8"x60" I.R. WITH DCSO ALUM.CAP

# 54 ODOT PT	N 49°35'04" W	1639.97 FT.
"A" R/W RD. BEG.	N 38°41'24" W	1106.23 FT.
"B" RD. FORK	N 48°38'36" W	630.73 FT.
"C" RD./ SEC.LINE	N 87°32'03" W	103.03 FT.
"D" RD./ B/LA LINE	S 82°23'11" W	682.35 FT.
"E" RD. END W.T.	S 85°15'00" W	1072.47 FT.
"F" RD./ SEC.LINE	S 87°32'03" E	190.03 FT.

(SEWER?)\*  
SHOWN AT THE REQUEST OF THE  
DOUGLAS COUNTY PLANNING DIRECTOR  
KEITH CUBIC. I MAKE NO CLAIM TO THE  
ACCURACY OR LOCATION OF THESE LINES.

*Randy Smith* 5-16-2013  
RANDY SMITH

C.S. File No. 67/39  
MAP FILE M165-36

C.S. File No. 67/39  
MAP FILE M165-36