

BOUNDARY SURVEY OF A PARCEL OF LAND LOCATED IN THE SW1/4 OF SECTION 14 AND IN THE NW1/4 OF SECTION 23, T.23S., R.05W., W.M., DOUGLAS COUNTY, OREGON W.O. 13-4341

FILED Date: 5/13/2013 By: SC This survey consists of: Map: M165-19 Narrative: Corner Rpt:

SURVEY FOR D&A BESSETT, L.L.C. P.O. BOX 369 YONCALLA, OR 97499 SURVEY BY ARMSTRONG SURVEYING & ENGINEERING, INC. 267 NE SECOND ST. STE. 100 PRINEVILLE, OR 97754 (541) 447-7791

DOUGLAS COUNTY SURVEYOR

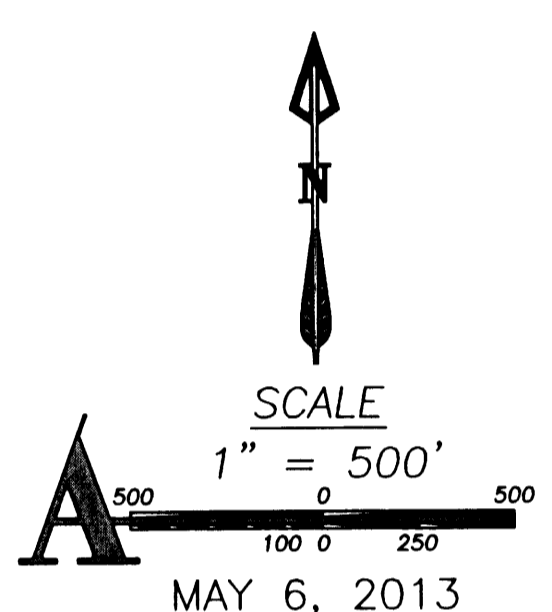
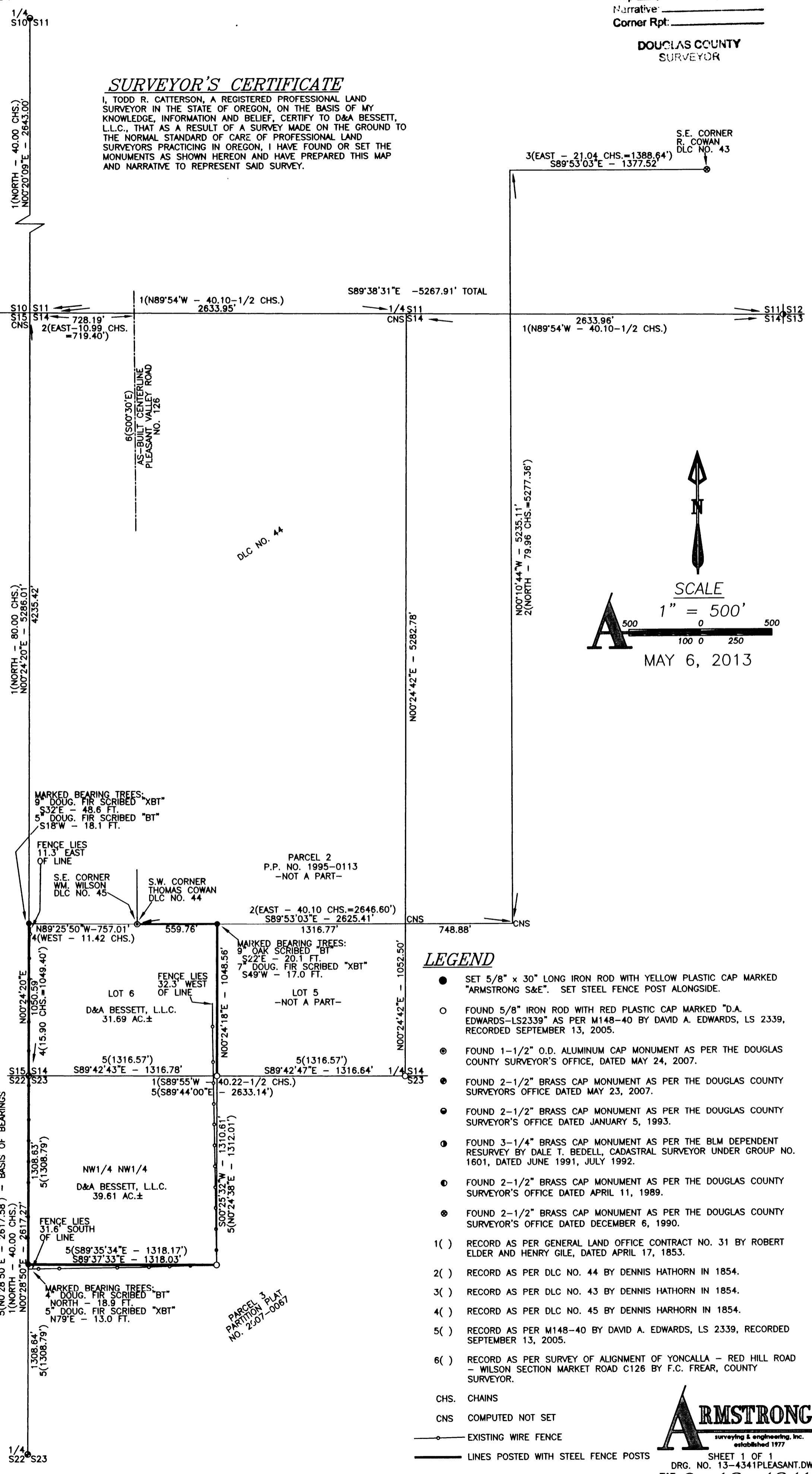
SURVEYOR'S CERTIFICATE

I, TODD R. CATTERSON, A REGISTERED PROFESSIONAL LAND SURVEYOR IN THE STATE OF OREGON, ON THE BASIS OF MY KNOWLEDGE, INFORMATION AND BELIEF, CERTIFY TO D&A BESSETT, L.L.C., THAT AS A RESULT OF A SURVEY MADE ON THE GROUND TO THE NORMAL STANDARD OF CARE OF PROFESSIONAL LAND SURVEYORS PRACTICING IN OREGON, I HAVE FOUND OR SET THE MONUMENTS AS SHOWN HEREON AND HAVE PREPARED THIS MAP AND NARRATIVE TO REPRESENT SAID SURVEY.

SURVEY NARRATIVE

WE WERE EMPLOYED BY D&A BESSETT, L.L.C. TO COMPLETE A BOUNDARY SURVEY OF THEIR PROPERTY DESCRIBED AS THE NW1/4 NW1/4 OF SECTION 23 AND GOVERNMENT LOT 6 OF SECTION 14. THIS PROPERTY WAS CONVEYED TO SAID OWNER UNDER DEEDS 1995-7808, RECORDS OF DOUGLAS COUNTY, OREGON. THE NW1/4 NW1/4 OF SECTION 23 WAS SURVEYED AS FOLLOWS: SECTION 23 WAS RETRACED AND SUBDIVIDED AND THE W1/16 BETWEEN SECTIONS 14 AND 23, THE CENTER 1/4 AND THE NW1/16 ESTABLISHED AND SET BY DAVID A. EDWARDS, LS 2339, IN 2005 RECORDED AS M148-40. WE RETRACED THE WEST LINE OF THE NW1/4 OF SECTION 23 AND ESTABLISHED THE SW CORNER OF THE NW1/4 NW1/4 AT SINGLE PROPORTIONATE POSITION BETWEEN THE W1/4 AND NW CORNERS OF SECTION 23. THE NE AND SE CORNERS OF SAID NW1/4 NW1/4 ESTABLISHED BY EDWARDS WERE RECOVERED AND HELD TO COMPLETE THE SURVEY.

RESEARCH OF THE RECORD REVEALED THAT GOVERNMENT LOT 6 WAS CREATED BY THE GENERAL LAND OFFICE FOLLOWING THE SURVEY OF D.L.C.'S NO. 43, 44 AND 45 IN 1854. GOVERNMENT LOT 6 WAS PLATTED TO BE THE SW1/4 SW1/4 OF SECTION 14 LYING SOUTHERLY OF D.L.C. NO. 44 AND DLC NO. 45. THE SW CORNER OF THE D.L.C. NO. 44 AND THE SE CORNER OF D.L.C. NO. 43 HAD BEEN RECOVERED AND REMONUMENTED. THE SOUTH LINE OF D.L.C. NO. 44 WAS RETRACED BY THE GRANT BOUNDARY METHOD OF THE BUREAU OF LAND MANAGEMENT MANUAL OF INSTRUCTIONS TO PRESERVE THE ANGLE AND DISTANCE RELATIONSHIPS OF THE ORIGINAL SURVEYS BY HATHORN. BECAUSE THE CORNER LOCATION WITHIN THE D.L.C. BOUNDARIES THE N1/4, NW AND W1/4 CORNERS OF SECTION 14 WERE LOST. THE N1/4 CORNER OF SECTION 15 WAS ALSO LOST. THE RETRACEMENT AND RE-ESTABLISHMENT OF THESE CORNERS BY CALCULATION WAS NECESSARY TO COMPLETE THIS SURVEY. THE NORTHING OF THE NW CORNER OF SECTION 14 WAS ESTABLISHED BY PROPORTION BETWEEN THE SW CORNER OF SECTION 14 AND THE W1/4 CORNER OF SECTION 11. THE EASTING OF SAID CORNER WAS ESTABLISHED BY PROPORTION BETWEEN THE NW CORNER OF SECTION 15 AND THE INTERSECTION OF THE PLEASANT VALLEY COUNTY ROAD NO. 126 CENTERLINE AS-BUILT AND THE NORTHERLY LINE OF SAID SECTION 14. COUNTY ROAD 126 WAS SHOWN BY F.C. FREAR, COUNTY SURVEYOR, AS BEING LOCATED ON THE COMMON D.L.C. LINE BETWEEN D.L.C. NO. 44 AND D.L.C. NO. 45 AS IT CROSSED THE SECTION LINE. D. HATHORN HAD MADE A TIE TO SAID NW CORNER OF SECTION 14 IN 1854 WHEN SURVEYING THE D.L.C.'S WHEN THE CORNER WAS STILL EVIDENT. THE POSITION OF THE NW CORNER IS HARMONIOUS TO THE ORIGINAL MEASUREMENTS WITH THE REESTABLISHED CORNER FALLING 2.14 FEET EAST OF THE LINE BETWEEN THE SW CORNER OF SECTION 14 AND THE W1/4 CORNER OF SECTION 11, WHICH CORNER WAS ESTABLISHED NORTH OF SAID SW CORNER OF SECTION 14. STANDARD DOUBLE PROPORTION WOULD PUT THE CORNER 23.39 FEET WEST OF THE POSITION CALCULATED FROM ROAD NO. 126 WHICH IS INCONSISTENT WITH THE ACCEPTED D.L.C. LINE. THE N1/4 CORNER OF SECTION 14 WAS REESTABLISHED AT SINGLE PROPORTIONATE POSITION BETWEEN THE NW AND NE SECTION CORNERS. THE NW CORNER OF GOVERNMENT LOT 6 WAS ESTABLISHED AT PROPORTIONATE POSITION ALONG THE WEST LINE OF SECTION 14 USING THE HATHORN TIE TO THE SW CORNER OF SECTION 14 FROM THE D.L.C. NO. 45 SURVEY IN 1854. THE NE CORNER OF GOVERNMENT LOT 5 WAS ESTABLISHED BY RUNNING FROM THE S1/4 CORNER OF SECTION 14 ON THE N-S CENTERLINE TO INTERSECTION WITH THE SOUTH LINE OF D.L.C. NO. 44 AS SURVEYED. THE NORTHEAST CORNER OF GOVERNMENT LOT 6 WAS ESTABLISHED ON THE SOUTH LINE OF D.L.C. NO. 44 FOR NORTHINGS AND AT THE EASTING SPLIT BETWEEN THE NE CORNER OF GOVERNMENT LOT 5 AND THE NW CORNER OF GOVERNMENT LOT 6. ALL PROPORTIONING COMPUTATIONS FOR THIS SURVEY WERE COMPUTED ON TRUE GEODETIC NORTH AND THEN THE DRAWING WAS ROTATED TO THE BASIS OF BEARINGS SHOWN. THIS SURVEY WAS PERFORMED USING A TRIMBLE R8 GPS SYSTEM IN RTK MODE AND A TRIMBLE S6 ROBOTIC TOTAL STATION.



LEGEND

- SET 5/8" x 30" LONG IRON ROD WITH YELLOW PLASTIC CAP MARKED "ARMSTRONG S&E". SET STEEL FENCE POST ALONGSIDE.
FOUND 5/8" IRON ROD WITH RED PLASTIC CAP MARKED "D.A. EDWARDS-LS2339" AS PER M148-40 BY DAVID A. EDWARDS, LS 2339, RECORDED SEPTEMBER 13, 2005.
FOUND 1-1/2" O.D. ALUMINUM CAP MONUMENT AS PER THE DOUGLAS COUNTY SURVEYOR'S OFFICE, DATED MAY 24, 2007.
FOUND 2-1/2" BRASS CAP MONUMENT AS PER THE DOUGLAS COUNTY SURVEYORS OFFICE DATED MAY 23, 2007.
FOUND 2-1/2" BRASS CAP MONUMENT AS PER THE DOUGLAS COUNTY SURVEYOR'S OFFICE DATED JANUARY 5, 1993.
FOUND 3-1/4" BRASS CAP MONUMENT AS PER THE BLM DEPENDENT RESURVEY BY DALE T. BEDELL, CADASTRAL SURVEYOR UNDER GROUP NO. 1601, DATED JUNE 1991, JULY 1992.
FOUND 2-1/2" BRASS CAP MONUMENT AS PER THE DOUGLAS COUNTY SURVEYOR'S OFFICE DATED APRIL 11, 1989.
FOUND 2-1/2" BRASS CAP MONUMENT AS PER THE DOUGLAS COUNTY SURVEYOR'S OFFICE DATED DECEMBER 6, 1990.
1 () RECORD AS PER GENERAL LAND OFFICE CONTRACT NO. 31 BY ROBERT ELDER AND HENRY GILE, DATED APRIL 17, 1853.
2 () RECORD AS PER DLC NO. 44 BY DENNIS HATHORN IN 1854.
3 () RECORD AS PER DLC NO. 43 BY DENNIS HATHORN IN 1854.
4 () RECORD AS PER DLC NO. 45 BY DENNIS HATHORN IN 1854.
5 () RECORD AS PER M148-40 BY DAVID A. EDWARDS, LS 2339, RECORDED SEPTEMBER 13, 2005.
6 () RECORD AS PER SURVEY OF ALIGNMENT OF YONCALLA - RED HILL ROAD - WILSON SECTION MARKET ROAD C126 BY F.C. FREAR, COUNTY SURVEYOR.
CHS. CHAINS
CNS COMPUTED NOT SET
EXISTING WIRE FENCE
LINES POSTED WITH STEEL FENCE POSTS

REGISTERED PROFESSIONAL LAND SURVEYOR Todd R. Catterson 5/10/13 OREGON JAN. 15, 2002 TODD R. CATTERSON 53270 RENEWS 12/31/13

ARMSTRONG surveying & engineering, inc. established 1977 SHEET 1 OF 1 DRG. NO. 13-4341PLEASANT.DWG W.O. 13-4341