

FILED

Date: 4-30-2013 By: J.C.
This survey consists of:
Map: M165-13
Narrative:
Corner Rpt:

DOUGLAS COUNTY
SURVEYOR

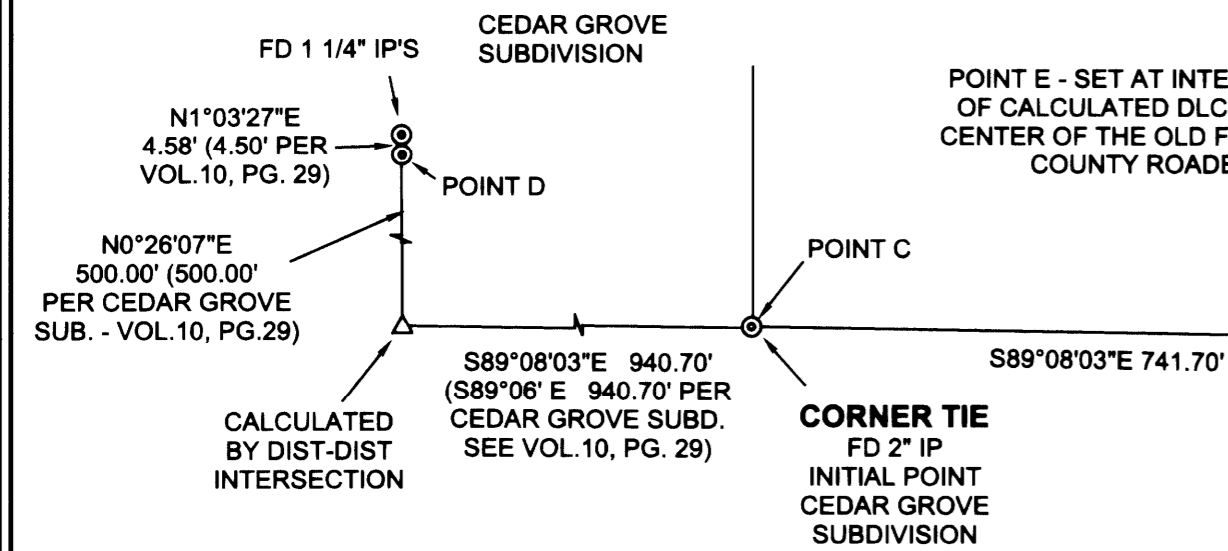
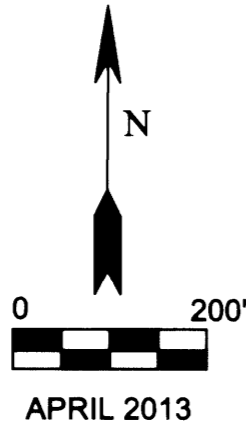
A SURVEY FOR BARNES AND ASSOCIATES

LOCATED IN THE SE 1/4 OF SECTION 21, TOWNSHIP 27 SOUTH, RANGE 4 WEST,
WILLAMETTE MERIDIAN, DOUGLAS COUNTY, OREGON

EAST - NORTHEAST
CORNER DLC #44 BURIED
IN DEEP FILL MATERIAL.
(POSITION CALC FROM
A NOW 10" W. OAK
BEARING TREE MARKED
BY MILO GODFREY IN 1963)

S2°00'00"W
66.80'
10" WHITE OAK
BEARING TREE

**BASIS OF BEARING PER CEDAR GROVE
SUBDIVISION - VOL. 10, PG. 29
"POINT C" TO "POINT D"**
N61°14'16"W 1068.64'
(1069.41' PER VOL. 10, PG. 29)



POINT E - SET AT INTERSECTION
OF CALCULATED DLC LINE AND
CENTER OF THE OLD FALL CREEK
COUNTY ROADBED.

FENCE - VARIES
FROM EDGE OF
ROADBED
IN THIS AREA

INSTRUMENT #92-22917
CLARIFIES THAT THE
CENTER OF THE ROAD IS
WHAT IS BEING MORE
PARTICULARLY DESCRIBED.

CENTER OF OLD
FALL CREEK COUNTY
ROAD PER DEED
(ROAD VACATED IN 1924 PER
DOCKET 527, RR 9, PG. 50)

FENCE AND NORTH
SIDE OF ROADBED

WOOD
BRIDGE

POINT F - CALCULATED
AT RECORD BEARING
AND DISTANCE
FROM POINT G

NOTE:
FENCES AND DEED LINES
ARE NOT IN THE SAME
LOCATION AT THE
NORTHEAST CORNER OF
PROPERTY. RECOMMEND
RESOLUTION.

FENCE - VARIES
FROM EDGE OF
ROADBED
IN THIS AREA

SOUTH SIDE OF
OLD ROADBED

S66°21'58"W
329.53' [330.0']

S83°51'58"W
527.24' [528.0']

S81°51'58"W
171.35' [171.6']

N45°14'40"W 714.00' [714']

N51°53'25"E
197.51' [197.82']

POINT A
(IN FENCE)

POINT G

BY DIST-DIST
INTERSECTION
FROM "POINT A"
AND "POINT B"
AS CALCULATED
PER PARTITION
PLAT 1997-0116

FENCE - VARIES
FROM EDGE OF
ROADBED
IN THIS AREA

S72°21'58"W
296.57' [297.0']

S66°51'58"W
428.39' [429.0']

S60°06'58"W
230.67' [231.0']

N17°38'50"W
110.05' [110.23']

N4°02'38"E
79.18' [79.31']

N51°53'25"E
197.51' [197.82']

N1°23'22"W
136.02' [136.25']

N1°23'22"W
136.02' [136.25']

N15°31'52"W
1168.481

IRON ROD FALLS
5.0' ON EAST
SIDE OF FENCE

RECORD ANGLE
PER DEED

FENCE - VARIES
FROM EDGE OF
ROADBED
IN THIS AREA

S72°21'58"W
296.57' [297.0']

S66°51'58"W
428.39' [429.0']

S60°06'58"W
230.67' [231.0']

N17°38'50"W
110.05' [110.23']

N4°02'38"E
79.18' [79.31']

N51°53'25"E
197.51' [197.82']

N1°23'22"W
136.02' [136.25']

N1°23'22"W
136.02' [136.25']

N15°31'52"W
1168.481

FENCE - VARIES
FROM EDGE OF
ROADBED
IN THIS AREA

S72°21'58"W
296.57' [297.0']

S66°51'58"W
428.39' [429.0']

S60°06'58"W
230.67' [231.0']

N17°38'50"W
110.05' [110.23']

N4°02'38"E
79.18' [79.31']

N51°53'25"E
197.51' [197.82']

N1°23'22"W
136.02' [136.25']

N1°23'22"W
136.02' [136.25']

N15°31'52"W
1168.481

FENCE - VARIES
FROM EDGE OF
ROADBED
IN THIS AREA

S72°21'58"W
296.57' [297.0']

S66°51'58"W
428.39' [429.0']

S60°06'58"W
230.67' [231.0']

N17°38'50"W
110.05' [110.23']

N4°02'38"E
79.18' [79.31']

N51°53'25"E
197.51' [197.82']

N1°23'22"W
136.02' [136.25']

N1°23'22"W
136.02' [136.25']

N15°31'52"W
1168.481

FENCE - VARIES
FROM EDGE OF
ROADBED
IN THIS AREA

S72°21'58"W
296.57' [297.0']

S66°51'58"W
428.39' [429.0']

S60°06'58"W
230.67' [231.0']

N17°38'50"W
110.05' [110.23']

N4°02'38"E
79.18' [79.31']

N51°53'25"E
197.51' [197.82']

N1°23'22"W
136.02' [136.25']

N1°23'22"W
136.02' [136.25']

N15°31'52"W
1168.481

FENCE - VARIES
FROM EDGE OF
ROADBED
IN THIS AREA

S72°21'58"W
296.57' [297.0']

S66°51'58"W
428.39' [429.0']

S60°06'58"W
230.67' [231.0']

N17°38'50"W
110.05' [110.23']

N4°02'38"E
79.18' [79.31']

N51°53'25"E
197.51' [197.82']

N1°23'22"W
136.02' [136.25']

N1°23'22"W
136.02' [136.25']

N15°31'52"W
1168.481

FENCE - VARIES
FROM EDGE OF
ROADBED
IN THIS AREA

S72°21'58"W
296.57' [297.0']

S66°51'58"W
428.39' [429.0']

S60°06'58"W
230.67' [231.0']

N17°38'50"W
110.05' [110.23']

N4°02'38"E
79.18' [79.31']

N51°53'25"E
197.51' [197.82']

N1°23'22"W
136.02' [136.25']

N1°23'22"W
136.02' [136.25']

N15°31'52"W
1168.481

FENCE - VARIES
FROM EDGE OF
ROADBED
IN THIS AREA

S72°21'58"W
296.57' [297.0']

S66°51'58"W
428.39' [429.0']

S60°06'58"W
230.67' [231.0']

N17°38'50"W
110.05' [110.23']

N4°02'38"E
79.18' [79.31']

N51°53'25"E
197.51' [197.82']

N1°23'22"W
136.02' [136.25']

N1°23'22"W
136.02' [136.25']

N15°31'52"W
1168.481

FENCE - VARIES
FROM EDGE OF
ROADBED
IN THIS AREA

S72°21'58"W
296.57' [297.0']

S66°51'58"W
428.39' [429.0']

S60°06'58"W
230.67' [231.0']

N17°38'50"W
110.05' [110.23']

N4°02'38"E
79.18' [79.31']

N51°53'25"E
197.51' [197.82']

N1°23'22"W
136.02' [136.25']

N1°23'22"W
136.02' [136.25']

N15°31'52"W
1168.481

FENCE - VARIES
FROM EDGE OF
ROADBED
IN THIS AREA

S72°21'58"W
296.57' [297.0']

S66°51'58"W
428.39' [429.0']

S60°06'58"W
230.67' [231.0']

N17°38'50"W
110.05' [110.23']

N4°02'38"E
79.18' [79.31']

N51°53'25"E
197.51' [197.82']

N1°23'22"W
136.02' [136.25']

N1°23'22"W
136.02' [136.25']

N15°31'52"W
1168.481

FENCE - VARIES
FROM EDGE OF
ROADBED
IN THIS AREA

S72°21'58"W
296.57' [297.0']

S66°51'58"W
428.39' [429.0']

S60°06'58"W
230.67' [231.0']

N17°38'50"W
110.05' [110.23']

N4°02'38"E
79.18' [79.31']

N51°53'25"E
197.51' [197.82']

N1°23'22"W
136.02' [136.25']

N1°23'22"W
136.02' [136.25']

N15°31'52"W
1168.481

FENCE - VARIES
FROM EDGE OF
ROADBED
IN THIS AREA

S72°21'58"W
296.57' [297.0']

S66°51'58"W
428.39' [429.0']

S60°06'58"W
230.67' [231.0']

N17°38'50"W
110.05' [110.23']

N4°02'38"E
79.18' [79.31']

N51°53'25"E
197.51' [197.82']

N1°23'22"W
136.02' [136.25']

N1°23'22"W
136.02' [136.25']

N15°31'52"W
1168.481

FENCE - VARIES
FROM EDGE OF
ROADBED
IN THIS AREA

S72°21'58"W
296.57' [297.0']

S66°51'58"W
428.39' [429.0']

S60°06'58"W
230.67' [231.0']

N17°38'50"W
110.05' [110.23']

N4°02'38"E
79.18' [79.31']

N51°53'25"E
197.51' [197.82']

N1°23'22"W
136.02' [136.25']

N1°23'22"W
136.02' [136.25']

N15°31'52"W
1168.481

FENCE - VARIES
FROM EDGE OF
ROADBED
IN THIS AREA

S72°21'58"W
296.57' [297.0']

S66°51'58"W
428.39' [429.0']

S60°06'58"W
230.67' [231.0']

N17°38'50"W
110.05' [110.23']

N4°02'38"E
79.18' [79.31']

N51°53'25"E
197.51' [197.82']

N1°23'22"W
136.02' [136.25']

N1°23'22"W
136.02' [136.25']

N15°31'52"W
1168.481

FENCE - VARIES
FROM EDGE OF
ROADBED
IN THIS AREA

S72°21'58"W
296.57' [297.0']

S66°51'58"W
428.39' [429.0']

S60°06'58"W
230.67' [231.0']

N17°38'50"W
110.05' [110.23']

N4°02'38"E
79.18' [79.31']

N51°53'25"E
197.51' [197.82']

N1°23'22"W
136.02' [136.25']

N1°23'22"W
136.02' [136.25']

N15°31'52"W
1168.481

FENCE - VARIES
FROM EDGE OF
ROADBED
IN THIS AREA

S72°21'58"W
296.57' [297.0']

S66°51'58"W
428.39' [429.0']

S60°06'58"W
230.67' [231.0']

N17°38'50"W
110.05' [110.23']

N4°02'38"E
79.18' [79.31']

N51°53'25"E
197.51' [197.82']

N1°23'22"W
136.02' [136.25']

N1°23'22"W
136.02' [136.25']

N15°31'52"W
1168.481

FENCE - VARIES
FROM EDGE OF
ROADBED
IN THIS AREA

S72°21'58"W
296.57' [297.0']

S66°51'58"W
428.39' [429.0']

S60°06'58"W
230.67' [231.0']

N17°38'50"W
110.05' [110.23']

N4°02'38"E
79.18' [79.31']

N51°53'25"E
197.51' [197.82']

N1°23'22"W
136.02' [136.25']

N1°23'22"W
136.02' [136.25']

N15°31'52"W
1168.481

FENCE - VARIES
FROM EDGE OF
ROADBED
IN THIS AREA

S72°21'58"W
296.57' [297.0']

S66°51'58"W
428.39' [429.0']

S60°06'58"W
230.67' [231.0']

N17°38'50"W
110.05' [110.23']

N4°02'38"E
79.18' [79.31']

N51°53'25"E
197.51' [197.82']

N1°23'22"W
136.02' [136.25']

N1°23'22"W
136.02' [136.25']

N15°31'52"W
1168.481

FENCE - VARIES
FROM EDGE OF
ROADBED
IN THIS AREA