

SURVEY FOR: JUNIPER PROPERTIES LIMITED PARTNERSHIP LLC
THE NE 1/4 OF SECTION 16 TOWNSHIP 23 SOUTH RANGE 6 WEST, W. M.
SURVEYED BY: LONE ROCK TIMBER MANAGEMENT COMPANY
P. O. BOX 1127 ROSEBURG, OREGON 97470
DOUGLAS COUNTY

DATE: JAN. 2013

FILED
 Date: 3/13/2013 By: hwl
 This survey consists of:
 Map: M 164-72
 Narrative:
 Corner Rpt:

DOUGLAS COUNTY
 SURVEYOR

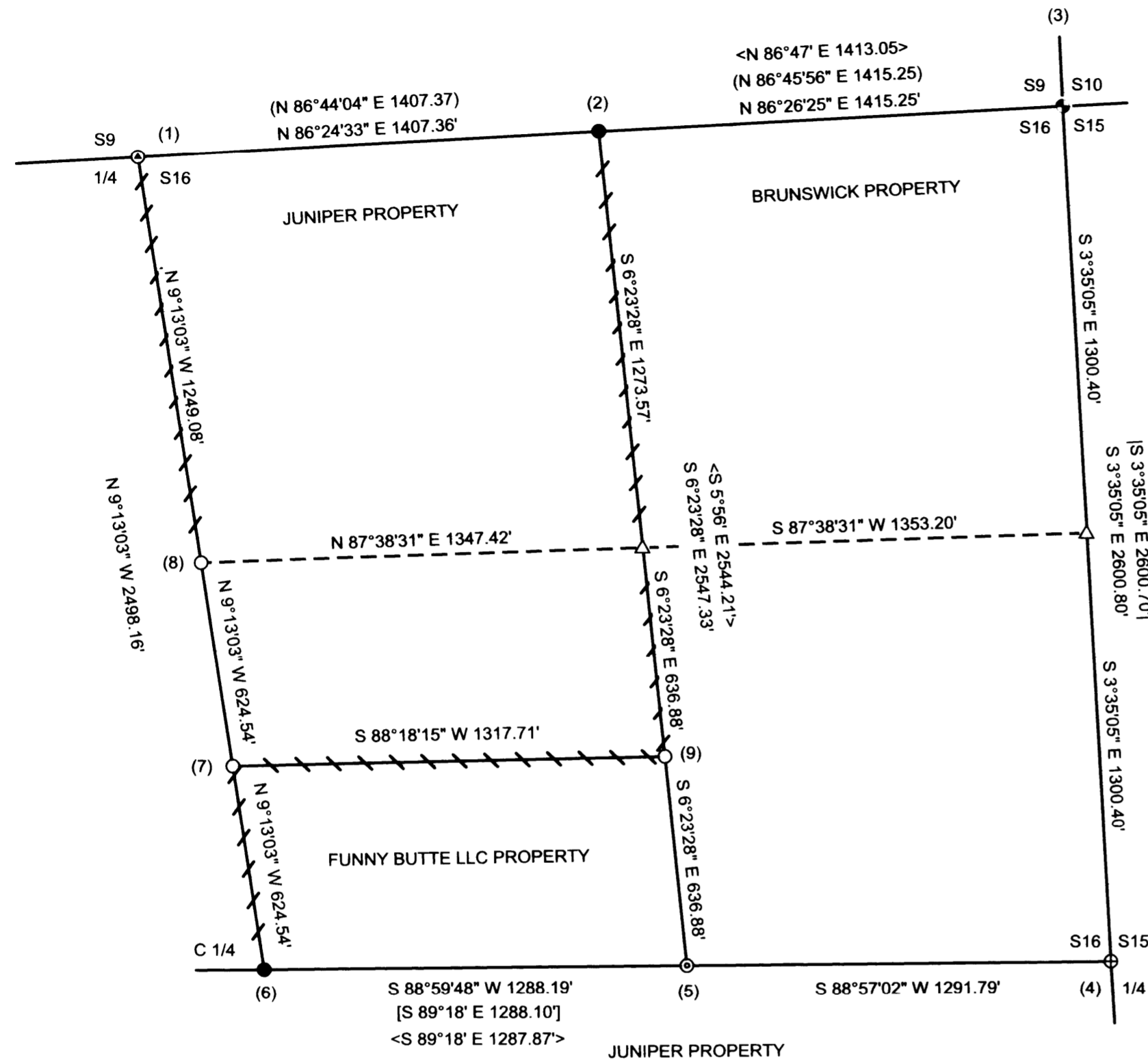
NARRATIVE:

THE PURPOSE OF THIS SURVEY IS TO SUBDIVIDE AND ESTABLISH PROPERTY CORNERS AND PROPERTY LINES OF THE NE 1/4 OF SECTION 16 FOR TIMBER MANAGEMENT PURPOSES. SECTION 16 WAS SURVEYED AND SUBDIVIDED BY WILFORD HAINES IN 1957, WITH WILFORD ESTABLISHING MONUMENTS FOR SECTION 16 AT THE NE CORNER, NORTH 1/4, CENTER 1/4, EAST 1/4 AND THE EAST 1/16 BETWEEN SECTION 9 AND 16. SHORTLY AFTERWARDS IN 1957 THE GLO USED HAINES LOCATION FOR THE NE CORNER OF SECTION 16 TO SET GLO BRASS CAPS FOR THE NORTH 1/4 AND EAST 1/4, 4.45 FEET AND 6.49 FEET RESPECTIVELY FROM HAINES MONUMENTS. SUBSEQUENTLY FOR THE LAST 50 YEARS OWNERS OF THE NE 1/4 OF SECTION 16 HAVE RECOGNIZED AND USED THE BLM MONUMENTS WHERE ESTABLISHED AS CONTROL FOR PROPERTY OWNERSHIP. IN 2005 FOUND REMAINS OF AN ORIGINAL BEARING TREE REESTABLISHED THE ORIGINAL LOCATION OF THE NE CORNER OF SECTION 16, FIFTY FEET AWAY FROM THE HAINES AND GLO 1955 MONUMENT. BLM AFFIRMED PRO BONO RIGHTS OF LAND OWNERS TO THE LONG STANDING USE OF THE 1955 MONUMENT TO REMAIN AS THE LOCATION FOR THE NE CORNER OF SECTION 16. SUBDIVISION OF SECTION 16 WAS DONE BY HAINES WITH MAP RMI-17 WITH THE ESTABLISHMENT OF THE CENTER 1/4, CENTEREAST 1/16 AND THE EAST 1/16 BETWEEN SECTIONS 9 AND 16. ALTHOUGH HAINES USED HIS OWN MONUMENTS FOR CONTROL ON THE EXTERIOR OF SECTION 16 TO ESTABLISH THE SUBDIVISION OF SECTION 16 CORNERS, USE OF THE HAINES MONUMENTS (WHERE NO BLM MONUMENT ARE PRESENT) FOR LAND OWNERSHIP AND MANAGEMENT OF THESE FORESTRY LANDS HAS BEEN THE STANDARD. I THEREFORE ACCEPTED AND USED THE HAINES MONUMENTS IN THE SUBDIVISION OF THE NE 1/4 OF SECTION 16 WHERE THERE ARE NO BLM MONUMENTS.

WE INITIATED OUR SURVEY AT THE NORTH 1/4 OF SECTION 16 A BLM BRASS CAP AND WE RAN RANDOM CLOSED LOOP TRAVERSES AROUND THE EAST 1/2 AND WEST 1/2 OF THE NORTHEAST QUARTER OF SECTION 16 AS WELL AS A RANDOM TRAVERSE WESTERLY THRU THE CENTER OF THE SW 1/4 NE 1/4 OF SECTION 16. WE COMPUTED AND SET THE CENTER NORTH 1/16, AND THE CENTER SOUTH NORTH AND CENTER SOUTH NORTH EAST 1/64 CORNERS AS SHOWN ON THIS MAP. WE THEN RIBBONED, BLAZED, PAINTED AND TAGGED THE PROPERTY LINES SHOWN ON THIS MAP. THIS SURVEY WAS DONE WITH A NIKON DTM 522 WITH GARY ANGIOLET, IGNACIO ROMAN AND JOSH FOWLER ASSISTING ME.

CORNER INFORMATION:

- 1) THE QUARTER CORNER BETWEEN SECTIONS 9 AND 16
 FOUND 1957 BLM CAP 0.8 FEET ABOVE GROUND.
 --HAINES T-IRON BEARS N79°W 4.45 FEET AS PER MAP M161-9
 -- 12" DOUGLAS FIR BEARS N58 3/4°W 8.0 FEET AS PER MAP M 161-9 HEALED FACE AND TAG.
 -- 17" DOUGLAS FIR BEARS S85 1/4°E 6.7 FEET AS PER MAP M 161-9 HEALED FACE AND TAG.
 CORNER LIES ON WEST FACING SLOPE APPROX. 400 FEET WEST OF NEWLY CONSTRUCTED ROCK ROAD.
- 2) THE EAST 1/16 CORNER BETWEEN SECTIONS 9 AND 16
 FOUND HAINES T-IRON AT GROUND LEVEL
 -- 49" DOUGLAS FIR BEARS N7 1/2°E 103.4 FEET AS PER MAP M 161-9 HEALED FACE AND TAG
 -- 27" DOUGLAS FIR BEARS N62°E 144.9 FEET AS PER MAP M 161-9 HEALED FACE AND TAG.
 -- 12" DOUGLAS FIR STUMP BEARS S30 3/4°E 12.5 FEET AS PER MAP M 161-9 VISIBLE SCRIBING AND TAG.
 CORNER LIES IN MOUND OF STONES AT EAST EDGE OF LARGE BENCH.
- 3) THE NORTHEAST SECTION CORNER FOR SECTION 16
 FOUND 1955 GLO BRASS CAP
 THIS CORNER HAS BEEN RENEWED MULTIPLE TIMES SO WE DID NOT RESHOOT BEARING TREES.
 FOR INFORMATION SEE CORNER RENEWAL T.23 S. R.6 W. 400500
- 4) THE QUARTER CORNER BETWEEN SECTIONS 15 AND 16
 FOUND 1957 GLO CAP 0.2 FEET ABOVE GROUND
 -- 9" DOUGLAS FIR BEARS S45 1/2°E 22.4 FEET (RECORD S46°E 23.1 FEET) HEALED FACE AND TAG.
 -- ROTTEN REMAINS BEARS S62 1/2°W 45.5 FEET AS PER RECORD
 -- 12" WHITE FIR BEARS S35 3/4°W 20.1 FEET (RECORD S35 1/2°W 19.8 FEET) VISIBLE SCRIBING AND TAG.
 -- HAINES T-IRON BEARS N80°25'44"W 6.49 FEET (RECORD N80°23'53"W 6.51 FEET).
 -- 54" FIR BT FOR HAINES T-IRON BEARS N50 3/4°E 8.5 FEET FROM T-IRON (RECORD N49 1/2°E 9.4 FEET) HEALED FACE AND TAG.
 -- 32" FIR BT FOR HAINES T-IRON BEARS S29°E 35.15 FEET FROM T-IRON (RECORD S28 3/4°E 35.4 FEET) HEALED FACE AND TAG.
 CORNER LIES ON WEST SLOPE APPROX. 400 FEET SOUTH AND 500 FEET WEST OF BLM ROAD 23-6-15.1. AN ALUMINUM ANGLE IRON BEARS APPROX. 1.5 FEET NORTH OF CORNER.
- 5) THE CENTEREAST 1/16 CORNER FOR SECTION 16
 FOUND 1993 LONE ROCK TIMBER CAP AT GROUND LEVEL
 -- 46" FIR BEARS N29°W 39.4 FEET (RECORD S26 1/2°E 39.3 FEET) HEALED FACE AND TAG.
 -- 32" FIR STUMP BEARS N80°E 3.8 FEET (RECORD N88°E 2.9 FEET) VISIBLE SCRIBE AND TAG.
 CORNER LIES ON STEEP NORTH SLOPE APPROX. 100 FEET SOUTH OF CREEK.
- 6) THE CENTER QUARTER FOR SECTION 16
 FOUND HAINES T-IRON 0.8 FEET ABOVE GROUND.
 -- 18" DOUGLAS FIR BEARS N5°W 8.1 FEET AS PER RECORD HEALED FACE AND TAG.
 -- 12" DOUGLAS FIR BEARS S50°W 1.7 FEET AS PER RECORD HEALED FACE AND TAG.
 CORNER LIES ON SMALL BENCH, APPROX. 100 FEET NORTH OF ROCK ROAD AT SWITCHBACK.
- 7) THE CENTER SOUTH NORTH 1/64 TH CORNER FOR SECTION 16
 SET 5/8" X 40" IRON ROD WITH 2 1/2" ALUMINUM CAP MARKED LONE ROCK TIMBER S16
 CSN 1/64 2013 PLS 2291
 --14" DOUGLAS FIR BEARS N52°W 28.0 FEET WE SCRIBE CSN 1/64 BT AND TAG TREE
 --11" DOUGLAS FIR BEARS S28°W 24.3 FEET WE SCRIBE CSN 1/64 BT AND TAG TREE
 CORNER SITS ON FLAT GROUND WITH RECENT LOGGING UNIT TO SOUTHEAST. PUT METAL FENCE POST APPROX. 1.0 FEET NORTH OF CORNER
- 8) THE CENTER NORTH 1/16 CORNER FOR SECTION 16
 SET 5/8" X 40" IRON ROD WITH 2 1/2" ALUMINUM CAP MARKED LONE ROCK TIMBER
 CN 1/16 S16 2013 PLS 2291
 -- 12" DOUGLAS FIR BEARS N78 3/4°E 39.9 FEET WE SCRIBE CN1/16 S16 BT AND TAG TREE
 -- 13" DOUGLAS FIR BEARS S51 1/2°W 39.1 FEET WE SCRIBE CN 1/16 S16 BT AND TAG TREE
 CORNER LIES ON FLAT GROUND IN SMALL GRASSY AREA. PUT METAL FENCE POST APPROX. 1.0 FEET NORTH OF CORNER
- 9) THE CENTER SOUTH NORTH EAST 1/64 TH CORNER FOR SECTION 16
 SET 5/8" X 40" IRON ROD WITH 2 1/2" ALUMINUM CAP MARKED LONE ROCK TIMBER S16
 CSNE 1/64 2013 PLS 2291
 -- 12" DOUGLAS FIR BEARS S45 1/4°W 39.5 FEET WE SCRIBE CSNE 1/64 BT AND TAG TREE
 -- 12" DOUGLAS FIR BEARS S89 1/4°E 62.1 FEET WE SCRIBE CSNE 1/64 BT AND TAG TREE
 CORNER LIES ON FLAT GROUND IN SMALL TIMBER. PUT METAL FENCE POST APPROX. 2.0 FEET NORTH OF CORNER

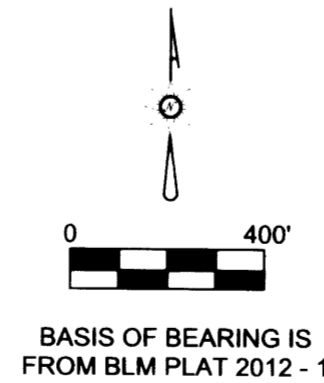


LEGEND

⊙	1957 BLM CAP
●	HAINES T - IRON PER ROLL MAP 1 -17
⊕	1955 GENERAL LAND OFFICE CAP
⊗	1957 GENERAL LAND OFFICE CAP
⊙	1993 LONE ROCK TIMBER CAP AT HAINES POSITION PER ROLL MAP 1 - 17
○	SET 5/8" X 40" IRON ROD WITH 2 1/2" ALUMINUM CAP
△	CALCULATED POSITION
()	HOFFINE 2010 SURVEY M161-9 FILED IN DOUGLAS COUNTY SURVEYORS OFFICE
< >	HAINES 1957 SURVEY ROLL MAP RM1-17 FILED IN DOUGLAS COUNTY SURVEYORS OFFICE
[]	HOFFINE 1993 CORNER RENEWAL MAP CS 63/15348 FILED IN DOUGLAS COUNTY SURVEYORS OFFICE
{ }	BLM FIELD NOTES PAGES 19490 - 19491 FILED IN DOUGLAS COUNTY SURVEYORS OFFICE
	BLM PLAT 2012 - 1 FILED IN DOUGLAS COUNTY SURVEYORS OFFICE
\ \	BLM FIELD NOTES PAGES 12685 - 12686 FILED IN DOUGLAS COUNTY SURVEYORS OFFICE
/ /	ORIGINAL GLO FIELD NOTES FILED IN DOUGLAS COUNTY SURVEYORS OFFICE
	LINES BLAZED, PAINTED, AND TAGGED DURING THIS SURVEY
—	PROJECTED LINES

REGISTERED PROFESSIONAL LAND SURVEYOR

 OREGON
 JULY 16, 1987
 KEN W. HOFFINE
 LICENSE # 2291
 EXPIRES: JULY 30, 2013



MAP FILE M 164-72