

# MAP OF SURVEY

LOCATED in the SW 1/4 of Section 35, T. 29 S., R. 7 W., W.M.  
in Douglas County, Oregon.

February 20, 2013

FILED  
Date: 2-22-2013 By: JC  
This survey consists of:  
Map: M164-66  
Narrative: \_\_\_\_\_  
Corner Rpt: \_\_\_\_\_

DOUGLAS COUNTY  
SURVEYOR

SURVEYED FOR: *JONATHAN BOOTH*  
*P.O. BOX 946*  
*DILLARD, OREGON 97432*

SURVEYED BY: *DAVID EDWARDS LAND SURVEYING*  
*P.O. BOX 361*  
*OAKLAND, OREGON 97462*  
*PHONE: (541) 459-0512*

REGISTERED  
PROFESSIONAL  
LAND SURVEYOR

*David A. Edwards*

OREGON  
JULY 26, 1998  
DAVID A. EDWARDS  
2339  
RENEWS 12/31/13

## LEGEND

- ⊙ INDICATES B.L.M. OR COUNTY SURVEYOR BRASS CAP FOUND.
- INDICATES 1 1/2" DIAM. AXLE FOUND.
- ▲ INDICATES STONE WITH "X" FOUND AT WEST 1/16 CORNER.
- INDICATES 5/8" X 30" STEEL REBAR W/RED PLASTIC CAP MKD. "D.A. EDWARDS-LS 2339" SET.

( ) DENOTES RECORD DATA AS NOTED.

SCALE: 1" = 500'

COMP. = COMPUTED

BASIS OF BEARINGS: M 86-77 AS SHOWN.

## NARRATIVE

THE PURPOSE OF THIS SURVEY IS TO MARK THE WEST LINE OF THE BOOTH PROPERTY AND TO SET THE NORTHWEST AND SOUTHWEST CORNERS OF SAME. TIES WERE MADE TO THE NORTH, EAST AND SOUTH 1/4 CORNERS AND TO THE IRON PIPE NEAR THE CENTER 1/4 CORNER AND TO THE WEST 1/16 CORNER AS SHOWN. FINDING THE DATA FROM M 81-4 TO BE ADEQUATELY ACCURATE, I COMPUTE THE POSITION OF THE WEST 1/4 CORNER BY PROJECTING A LINE FROM THE EAST 1/4 CORNER, THROUGH THE FOUND 3/4" DIAM. IRON PIPE, THE M 81-4 RECORD DISTANCE TO THE WEST 1/4 CORNER. USING RECORD DATA FROM M 86-77 TO COMPUTE A POSITION FOR THE SOUTHWEST SECTION CORNER RETURNS A FAVORABLE COMPARTIVE DISTANCE WITH THE 1976 B.L.M. RESURVEY ALONG THE WEST SECTION LINE AS SHOWN HEREON. BEARING TREES SCRIBED FOR THE SET CORNERS WERE SCRIBED ACCORDING TO THE 2009 B.L.M. MANUAL, MEASURED TO CENTER OF TREE AT ROOT CROWN, AND ARE SITUATED AS FOLLOWS:

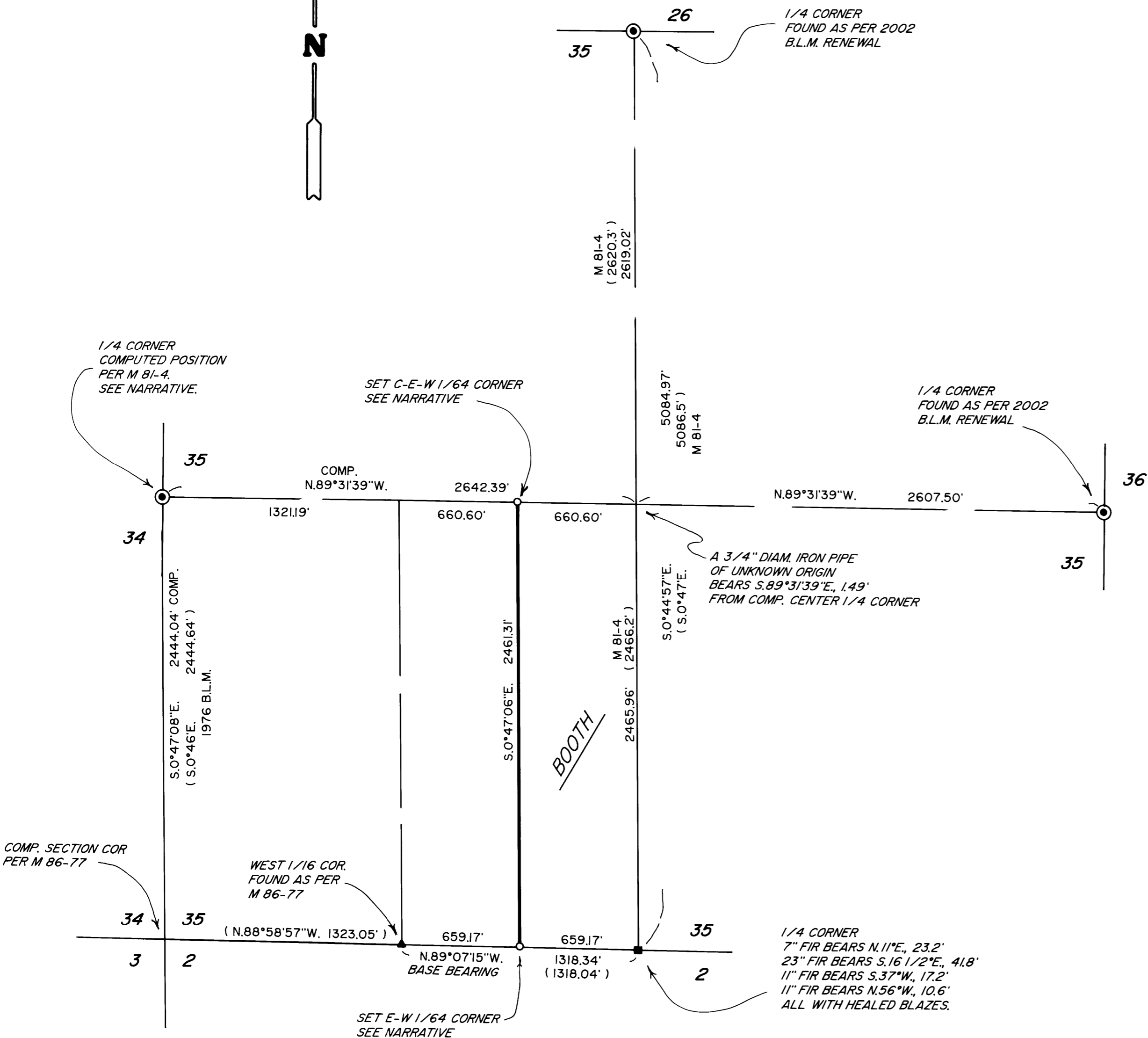
AT THE E-W 1/64 CORNER: AN 11" DIAM. PINE BEARS S.47°E., 9.03 FEET.  
A 9" DIAM. PINE BEARS S.60°W., 1.40 FEET.  
SET A 6 FOOT STEEL POST 2 FEET NORTH

AT THE C-E-W 1/64 CORNER: REBAR IS DRIVEN 15" IN GROUND TO REJECTION.  
BUILD MOUND OF STONES AROUND REBAR.  
A 10" DIAM. CEDAR BEARS S.57°E., 69.0 FEET.  
A 21" DIAM. CEDAR BEARS N.63°W., 64.7 FEET.  
SET A 6 FOOT STEEL POST 2 FEET SOUTH.

FIELD CREW: BRANT MILLER, ERIC SPRINKLE AND JON BOOTH.

EQUIPMENT: NIKON TOTAL STATION.

COMPUTATIONS AND DRAFTING: DAVID EDWARDS.



MAP FILE M164-66

MAP FILE M164-66