

RECORD OF SURVEY
 FOR: ROSEBURG RESOURCES CO.
 ALL QUARTERS, SECTION 11, T.25 S., R.7 W., W.M.
 DOUGLAS COUNTY, OREGON
 7 DECEMBER 2012

FILED
 DATE: 12-21-2012 BY: JC
 THIS SURVEY CONSISTS OF:
 MAP: M164-50
 NARRATIVE:
 CORNER RPT: _____

DOUGLAS COUNTY
 SURVEYOR

NARRATIVE:

THE PURPOSE OF THIS SURVEY WAS TO MONUMENT THE CENTER NORTH 1/16 CORNER OF SECTION 11, TOWNSHIP 25 SOUTH, RANGE 7 WEST, WILLAMETTE MERIDIAN AND MARK THE LINES NOTED AS POSTED ON THIS RECORD OF SURVEY.

CONTROLLING CORNERS WERE LOCATED WITH A COMBINATION OF TRAVERSE TIE TO EXISTING CORNERS AND PROJECTED POSITION FROM PRIOR SURVEYS OF RECORD.

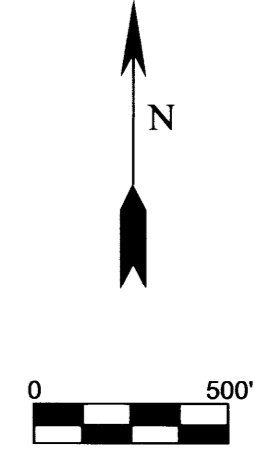
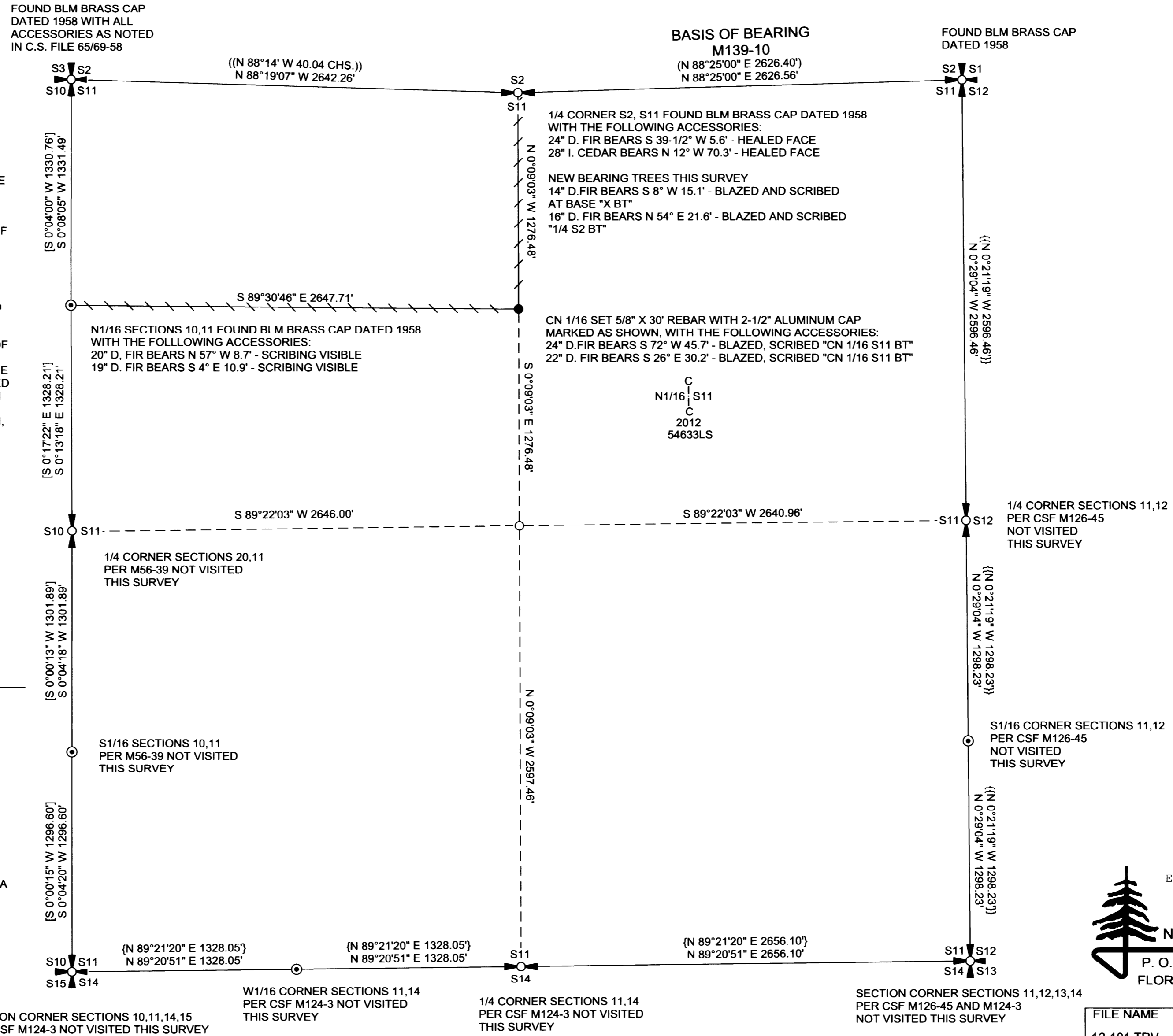
THE NORTH LINE OF SECTION 11 AND THE NORTH 1/16 CORNER COMMON TO SECTIONS 10 AND 11 WERE TIED BY GROUND TRAVERSE. COUNTY SURVEY FILE M56-39 WAS THEN TRANSLATED TO THE NORTH 1/16 CORNER AND ROTATED TO THE BASIS OF BEARING FOR THIS SURVEY. THIS PROVIDED A PROJECTED POSITION FOR THE CONTROLLING CORNERS ON THE WEST LINE OF SECTION 11. COUNTY SURVEY FILE M126-45 WAS USED TO ESTABLISH THE POSITION OF THE CONTROLLING CORNERS ON THE EAST LINE OF SECTION 11. COUNTY SURVEY FILE M124-3 WAS USED TO ESTABLISH THE POSITION OF THE CONTROLLING CORNERS ON THE SOUTH LINE OF SECTION 11. THE SOUTHEAST CORNER POSITION WAS CREATED BY DISTANCE - DISTANCE INTERSECTION, HOLDING THE AS-TIED POSITION OF THE NORTHEAST CORNER OF SECTION 11 AND THE PROJECTED POSITION OF THE SOUTHWEST CORNER OF SECTION 11. SECTION 11 WAS THEN SUBDIVIDED PER THE 2009 BLM MANUAL ON SURVEYING INSTRUCTION.

THE BASIS OF BEARING FOR THIS SURVEY WAS THE EAST HALF MILE OF THE NORTH LINE OF SECTION 11 AS REFERENCED IN COUNTY SURVEY FILE M139-10.

THIS SURVEY WAS PERFORMED USING A NIKON TOTAL STATION.

LEGEND

- SET MONUMENT THIS SURVEY AS NOTED
- ⊙ 1/16 CORNER AS NOTED
- ⊕ QUARTER CORNER OF RECORD AS NOTED
- ⊗ SECTION CORNER OF RECORD AS NOTED
- CALCULATED POSITION NO MONUMENT SET
- ////// LINE MARKED WITH RED PAINTED BLAZES
 RED FLAGGING AND 5-1/2" GALVANIZED
 STEEL POST SET ON LINE AT 200' INTERVALS +/-
- () RECORD DATA CSF M139-10
- (()) 1959 BUREAU OF LAND MANAGEMENT RECORD DATA
- [] RECORD DATA CSF M56-39
- { } RECORD DATA CSF M124-3
- {{ }} RECORD DATA CSF M126-45
- BLM BUREAU OF LAND MANAGEMENT
- CSF COUNTY SURVEY FILE



REGISTERED
 PROFESSIONAL
 LAND SURVEYOR
Ronald L. Rice
 OREGON
 JULY 9, 2002
 RONALD L. RICE
 54633LS

EXPIRATION DATE: 12-31-2012

Northwest Land Surveying, Inc.
 P. O. Box 2827
 FLORENCE, OR 97439 541-997-9201

FILE NAME		
12-101.TRV		
SCALE	DATE	DRAWN BY
500 Ft/In	12-7-2012	RLR
JOB	REVISION	SHEET
LONG LEAD	-----	1/1

This map drawn with TRAVERSE PC Software

MAP FILE M164-50

MAP FILE M164-50