

MAP OF SURVEY

LOCATED in Section 28, T. 20 S., R. 7 W., W.M.
in Douglas County, Oregon.

November 12, 2012

FILED
Date: 11/26/2012 By: NW
This survey consists of:
Map: M 164-39
Narrative:
Corner Rpt:

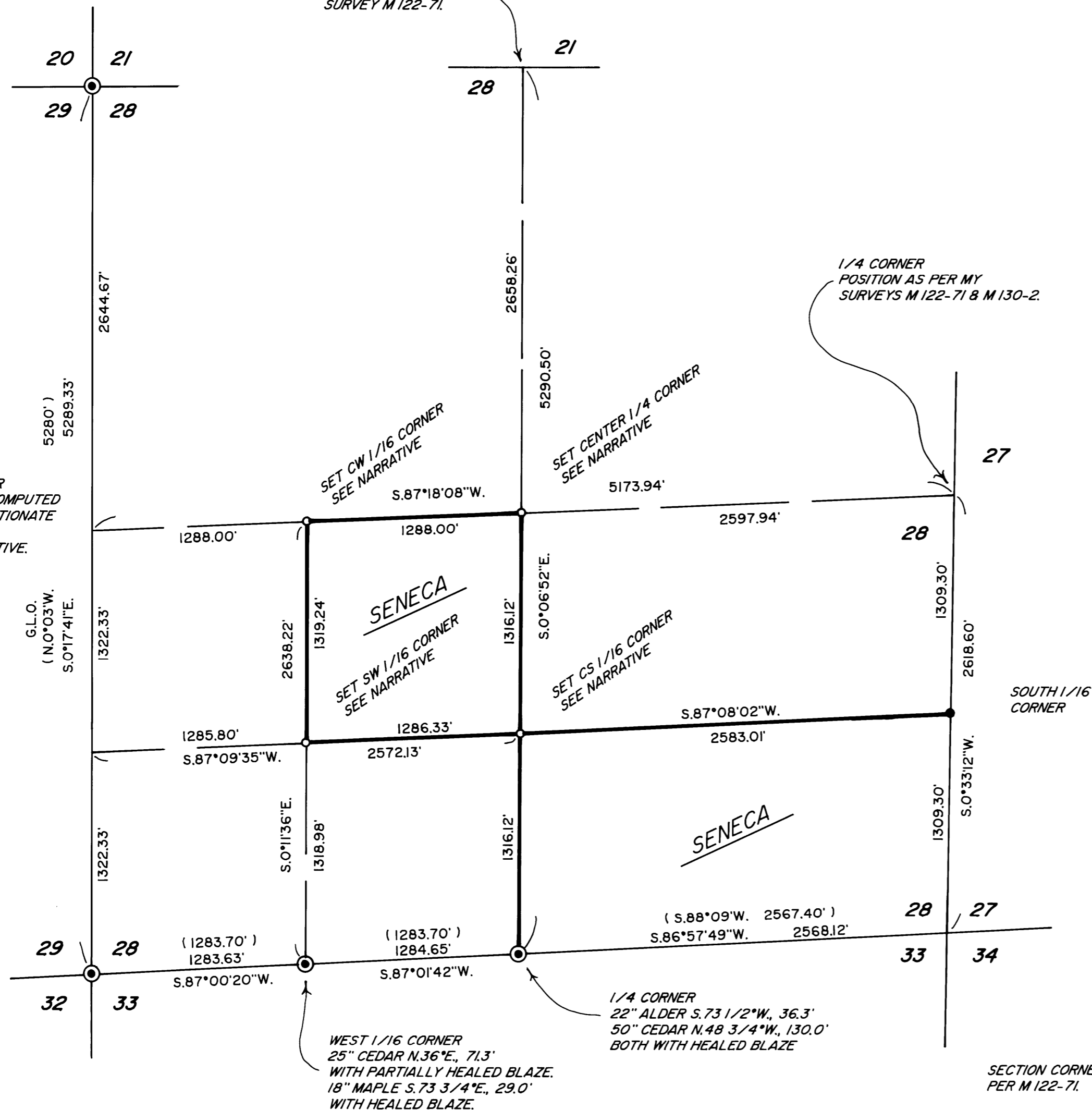
DOUGLAS COUNTY
SURVEYOR

SECTION CORNER
HAINES' 24" CEDAR SNAG N.16°W., 71.4'
FOUND STEEL FENCE POST S.21°E., 16'
NEW B.T.'S SCRIBED PER B.L.M. MANUAL:
15" DIA. FIR S.54°E., 5.2'
12" DIA. FIR S.35°W., 11.2'
SET 6 FOOT STEEL POST 2' NORTH

1/4 CORNER
POSITION AS PER MY
SURVEY M 122-71.

1/4 CORNER
POSITION AS PER MY
SURVEYS M 122-71 & M 130-2.

1/4 CORNER
POSITION COMPUTED
BY PROPORTIONATE
METHOD.
SEE NARRATIVE.



SECTION CORNER
PER 2012 B.L.M.
FIELD WORK.
SEE C.S. 42/404.

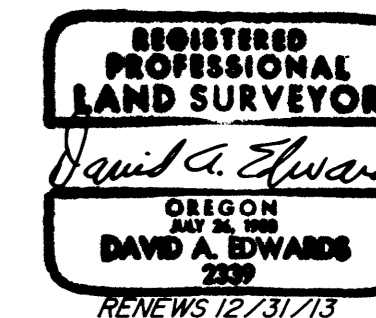
WEST 1/16 CORNER
25" CEDAR N.36°E., 71.3'
WITH PARTIALLY HEALED BLAZE.
18" MAPLE S.73 3/4°E., 29.0'
WITH HEALED BLAZE.

1/4 CORNER
22" ALDER S.73 1/2°W., 36.3'
50" CEDAR N.48 3/4°W., 130.0'
BOTH WITH HEALED BLAZE

SECTION CORNER
PER M 122-71.

SURVEYED FOR: *SENECA JONES TIMBER CO.*
P.O. BOX 10265
EUGENE, OREGON 97440

SURVEYED BY: *DAVID EDWARDS LAND SURVEYING*
P.O. BOX 361
OAKLAND, OREGON 97462
PHONE: (541) 459-0512



LEGEND

- INDICATES B.L.M. OR COUNTY SURVEYOR BRASS CAP FOUND.
 - INDICATES 5/8" DIAM. STEEL REBAR WITH ALUMINUM CAP FOUND PER M 130-2.
 - INDICATES 5/8" X 30" STEEL REBAR WITH 2 1/2" DIAM. ALUMINUM CAP MKD. AS PER THE 2009 B.L.M. MANUAL AND ALSO MKD. "LS 2339" AND "2012".
 - () DENOTES B.L.M. RECORD DATA UNLESS OTHERWISE NOTED.
- SCALE: 1" = 600'
- INDICATES LINE BLAZED AND POSTED THIS SURVEY.

BASIS OF BEARINGS: EXISTING CONTROL PER MY SURVEYS M 122-71 AND M 130-2.

NARRATIVE

THE PURPOSE OF THIS SURVEY IS TO MARK THOSE BOUNDARIES SHOWN AS BOLD LINES HEREON AND TO SET CERTAIN CORNERS OF THE SENECA OWNERSHIP AS SHOWN. EXISTING CONTROL POINTS AND DATA PER MY SURVEYS M 122-71 AND M 130-2 WERE UTILIZED TO CONTROL THIS SURVEY. ADDITIONAL TIES WERE MADE TO CONTROLLING MONUMENTS AS SHOWN. A TRAVERSE WAS RUN INTO THE VICINITY OF THE MID-POINT ON THE WEST LINE OF SECTION 28 IN HOPES OF FINDING THE ORIGINAL WEST 1/4 CORNER. A DILIGENT 2 DAY SEARCH BY ME, MY CREW AND THE COUNTY SURVEYOR'S CREW WAS UNSUCCESSFUL. BEARING TREES SCRIBED ON THIS SURVEY ARE MEASURED TO CENTER OF TREE AT ROOT CROWN AND ARE SITUATED AS FOLLOWS:

AT THE CENTER 1/4 CORNER: A 9" DIA. FIR BEARS N.23°E., 4.7 FEET.
A 9" DIA. FIR BEARS S.12°E., 18.5 FEET. ALL SCRIBED "C1/4 S28 BT"
A 15" DIA. FIR BEARS S.68°W., 7.4 FEET.
A 6 FOOT STEEL POST IS SET 2 FEET SOUTH.

AT THE CS 1/16 CORNER: A 17" DIA. FIR BEARS N.45°E., 37.0 FEET.
AN 8" DIA. ALDER BEARS S.38°E., 3.2 FEET. BOTH SCRIBED "CS1/16 S28 BT"
A 6 FOOT STEEL POST IS SET 2 FEET NORTH.

AT THE SW 1/16 CORNER: A 25" DIA. FIR BEARS S.88°E., 22.0 FEET. BOTH SCRIBED "SW 1/16 S28 BT"
A 27" DIA. FIR BEARS N.52°W., 2.9 FEET.
A 6 FOOT STEEL POST IS SET 2 FEET NORTH.

AT THE CW 1/16 CORNER: A 16" DIA. FIR BEARS N.8°E., 7.5 FEET.
A 9" DIA. ALDER BEARS S.24°W., 13.25 FEET. BOTH SCRIBED "CW 1/16 S28 BT"
A 6 FOOT STEEL POST IS SET 2 FEET SOUTH.

THE LINES WERE MARKED BY BLAZING TREES ON EACH SIDE OF LINE, BY SETTING 6 FOOT STEEL POSTS ALONG THE BOUNDARIES AT INTERVALS OF 200' OR LESS AND BY HANGING LIBERAL AMOUNTS OF RED FLAGGING ALONG THE TRUE LINES.

FIELD CREW: DAVID EDWARDS AND BRANT MILLER.

EQUIPMENT: NIKON TOTAL STATION.

COMPUTATIONS AND DRAFTING: DAVID EDWARDS.