

MAP OF SURVEY

LOCATED in Section 24, T. 26 S., R. 3 W., W.M.
in Douglas County, Oregon.

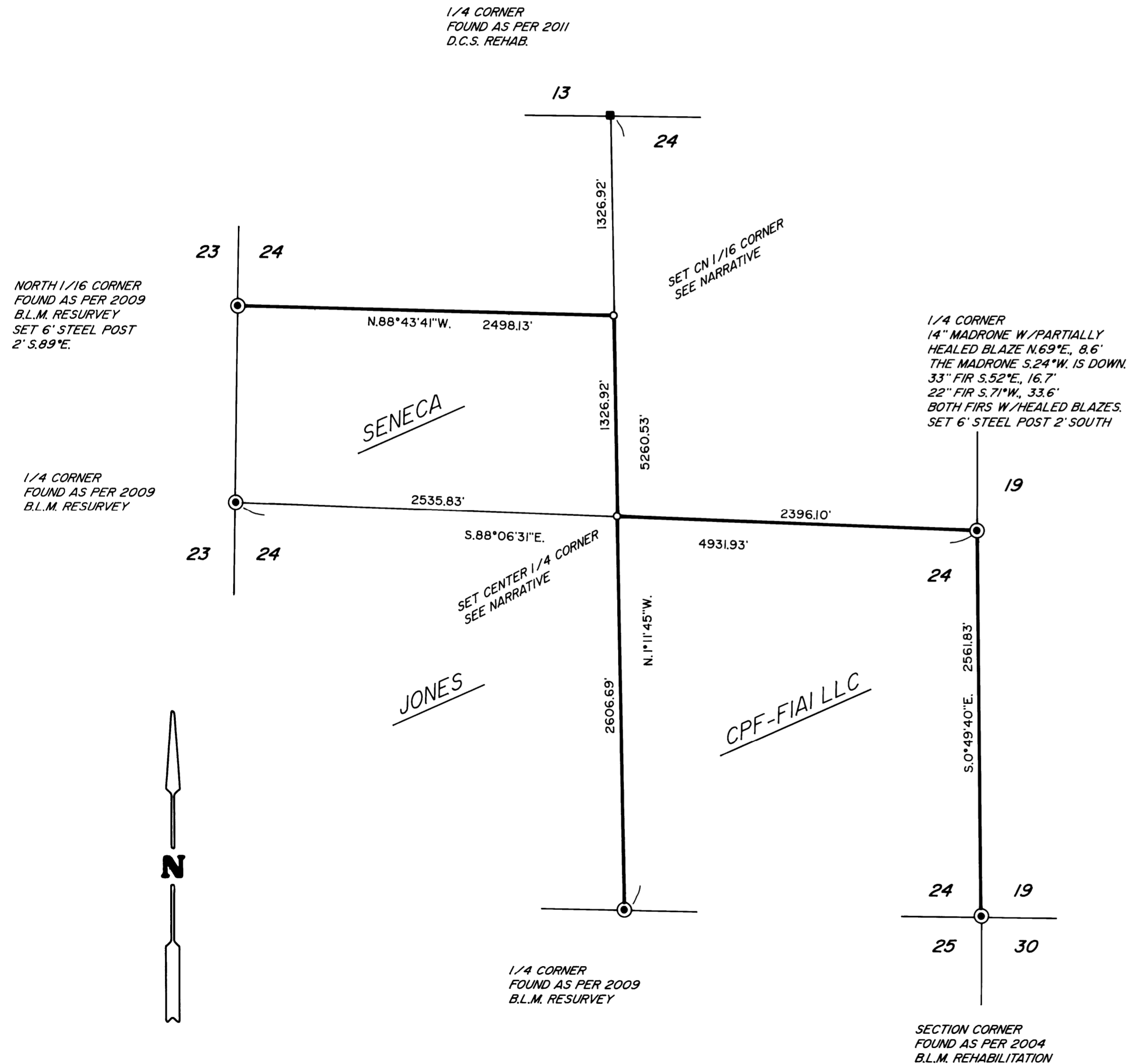
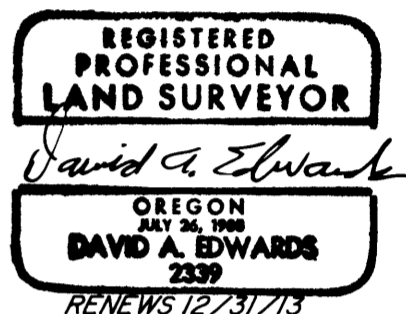
October 30, 2012

FILED
Date: 11-7-2012 By: NLR
This survey consists of:
Map: M164-32
Narrative:
Corner Rpt:
DOUGLAS COUNTY
SURVEYOR

SURVEYED FOR: CPF-FIAI LLC
C/O BARNES & ASSOCIATES, INC.
2000 STEWART PKWY. #204
ROSEBURG, OREGON 97471

SENECA JONES TIMBER CO.
P.O. BOX 2129
ROSEBURG, OREGON 97470

SURVEYED BY: DAVID EDWARDS LAND SURVEYING
P.O. BOX 361
OAKLAND, OREGON 97462
PHONE: (541) 459-0512



LEGEND

- ⊙ INDICATES BRASS CAP FOUND.
 - INDICATES 5/8" X 30" STEEL REBAR WITH 2 1/2" DIAM. ALUMINUM CAP MARKED AS PER THE 2009 B.L.M. MANUAL AND ALSO MARKED "LS 2339" AND "2012".
 - () DENOTES B.L.M. RECORD DATA.
 - INDICATES BOUNDARY BLAZED AND POSTED THIS SURVEY.
- SCALE: 1" = 600'
- BASIS OF BEARINGS: WEST 1/4 CORNER TO SOUTH 1/4 CORNER = S.43°54'15"E, 3733.26' A.M.
(S.43°54'15"E, 3733.49')
2009 B.L.M. RESURVEY

NARRATIVE

THE PURPOSE OF THIS SURVEY IS TO SET THE CENTER 1/4 CORNER AND CN 1/16 CORNER OF SECTION 24 AND TO MARK THOSE BOUNDARIES SHOWN AS A BOLD LINE HEREON. THE 1" DIAM. IRON PIPE SET IN 1960 BY WEYERHAUSER COULD NOT BE FOUND. MY POSITION, HOWEVER, FITS THE REMAINING 1960 BEARING TREE QUITE WELL. THE SUBJECT LINES WERE MARKED BY BLAZING TREES ON EACH SIDE OF LINE, BY SETTING 6 FOOT STEEL POSTS ON LINE AT INTERVALS OF 200' OR LESS AND BY HANGING LIBERAL AMOUNTS OF RED FLAGGING ALONG THE TRUE LINES. BEARING TREES SCRIBED ON THIS SURVEY ARE MEASURED TO CENTER OF TREE AT ROOT CROWN AND ARE SITUATED AS FOLLOWS:

AT THE CENTER 1/4 CORNER: A 5" DIAM. FIR BEARS N.42°E., 15.0 FEET. ALL SCRIBED
A 6" DIAM. ALDER BEARS S.29°E., 5.65 FEET. "C 1/4 S24 BT"
A 17" DIAM. CEDAR BEARS N.52°W., 11.2 FEET.
THE 1960 B.T., A 30" DIAM. HEMLOCK SNAG BEARS N.37°E., 15.8 FEET.
A 6 FOOT STEEL POST IS SET 1.6 FEET NORTH.

AT THE CENTER-NORTH 1/16 CORNER:
A 9" DIAM. HEMLOCK BEARS S.22°W., 14.15 FEET.
A 14" DIAM. HEMLOCK BEARS N.53°W., 10.95 FEET.
A 1" DIAM. ALUM. PIPE LYING ON GROUND BEARS S.86°W., 3.6 FEET.
SET A 6FOOT STEEL POST 2' SOUTH.

FIELD CREW: DAVID EDWARDS AND BRANT MILLER.
EQUIPMENT: NIKON TOTAL STATION.
COMPUTATIONS AND DRAFTING: DAVID EDWARDS.

MAP FILE M164-32

MAP FILE M164-32