

SURVEY FOR: LONE ROCK TIMBERLAND CO. & SENECA JONES TIMBER COMPANY
SURVEYED BY: LONE ROCK TIMBER MANAGEMENT CO.
SECTION 30 TOWNSHIP 27 SOUTH RANGE 3 WEST W. M.
DOUGLAS COUNTY OREGON
P.O. BOX 1127 ROSEBURG, OR 97470
TRACT: CONIFER #2

DATE: JULY 2012

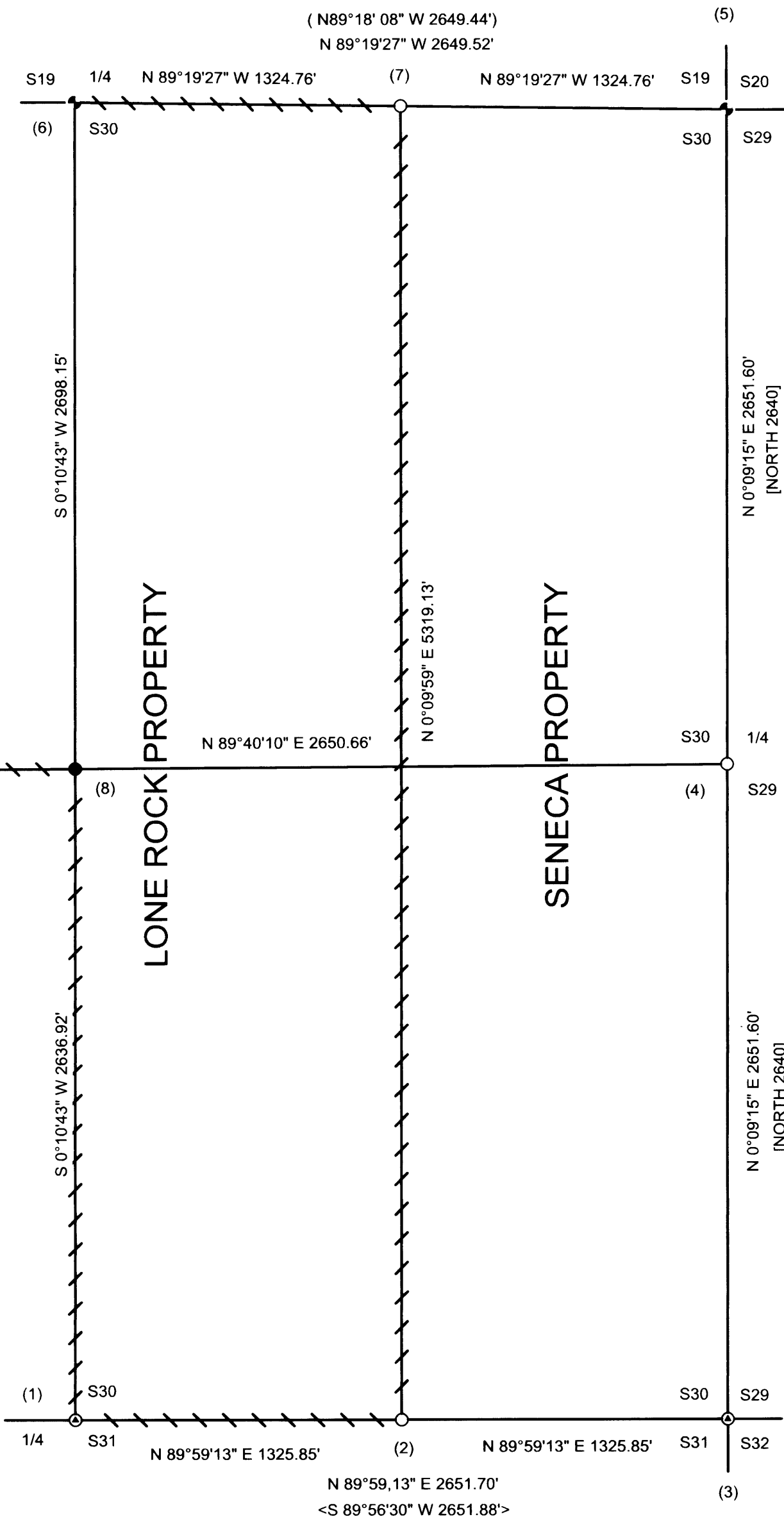
NARRATIVE:

THE PURPOSE OF THIS SURVEY IS TO ESTABLISH PROPERTY CORNERS AND MARK PROPERTY LINES FOR FOREST MANAGEMENT PURPOSES. WE INITIATED THIS SURVEY AT THE NORTH 1/4 OF SECTION 30, WHICH IS A COUNTY BCIP SET FROM ORIGINAL EVIDENCE. WE THEN BEGAN A RANDOM CONVENTIONAL SURVEY TRAVERSE ALONG PROPERTY AND SECTION LINES TO THE FOUND CORNER MONUMENTS SHOWN ON THIS MAP; THE NORTHEAST CORNER, THE SOUTHEAST CORNER AND THE SOUTH 1/4 OF SECTION 30, ALL OF WHICH HAVE BEEN RE-ESTABLISHED FROM ORIGINAL EVIDENCE. FROM OUR TRAVERSE ALONG THE EAST LINE OF SECTION 30 WE ESTABLISHED A POINT FOR THE EAST 1/4 OF SECTION 30. WITHIN 8 FEET OF THIS POINT WE FOUND A 53" DOUGLAS FIR STUMP AND A 12" DOUGLAS FIR STUB REMAINS NEAR ORIGINAL RECORD FACE DISTANCE AND NEAR RECORD BEARINGS FOR THE CORRESPONDING ORIGINAL BEARING TREES. WE EXAMINED THESE TREE REMAINS WITH RANDY SMITH, DOUGLAS COUNTY SURVEYOR AND DECIDED THERE WAS NOT ENOUGH CONCLUSIVE EVIDENCE FOUND TO RESET THE EAST 1/4 CORNER FROM THESE REMAINS. NEAR EACH OF THE FOUND MONUMENTS AS SHOWN ON THIS MAP WE ESTABLISHED GPS CONTROL POINTS TO ADJUST OUR CONVENTIONAL TRAVERSES. FROM OUR BALANCED SURVEY TRAVERSES WE COMPUTED AND SET AT PROPER PROPORTIONAL MEASURE FOR THE EAST 1/4 AND THE EAST 1/16 CORNERS AS SHOWN ON THIS MAP. THIS SURVEY WAS DONE WITH TRIMBLE 4000SSE AND 4400 FAST STATIC GPS AND NIKON DTM450 AND 522 TOTAL STATIONS WITH GARY ANGIOLET, DAN SAILY AND IGNACIO ROMAN ASSISTING ME.

FILED
 Date: 9/7/2012 By: NW
 This survey consists of:
 Map: M 164-13
 Narrative:
 Corner Rpt.:
 DOUGLAS COUNTY
 SURVEYOR

CORNER INFORMATION:

- 1) THE QUARTER CORNER BETWEEN SECTIONS 30 AND 31 FOUND 1989 BLM CAP 6" ABOVE GROUND
 -- FIR SNAG BEARS N20°E 5.3 FEET AS PER RECORD NO VISIBLE MARKS
 -- 15" HEMLOCK BEARS N29 1/2°E 14.5 FEET AS PER RECORD HEALED FACE AND TAG
 -- 19" CEDAR BEARS N73°W 34.2 FEET (RECORD N73 1/4°W 34.32 FEET) HEALED FACE AND TAG
 -- 16" DOULAS FIR STUMP BEARS S36 1/2°W 49.3 FEET (RECORD S36°W 49.5 FEET) NO MARKS
 CORNER LIES ON WEST EDGE OF DIRT ROAD CUT BANK AND APPROX. 75 FEET WEST OF ROCK ROAD
- 2) THE EAST 1/16 TH CORNER BETWEEN SECTIONS 30 AND 31 SET 5/8" X 40" IRON ROD WITH 2 1/2" ALUMINUM CAP MARKED LONE ROCK TIMBER E 1/16 S30 S31 2012 PLS 2291
 -- 21" DOUGLAS FIR BEARS N48°W 14.3 FEET WE SCRIBE E1/16 S30 BT AND TAG
 -- 26" DOUGLAS FIR BEARS S45 3/4°E 22.5 FEET WE SCRIBE E1/16 S31 BT AND TAG
 CORNER LIES ON STEEP NORTHEAST SLOPE APPROX. 70 FEET EAST OF MAIN RIDGETOP ROCK ROAD. PUT METAL FENCE POST APPROX. 1.0 FEET WEST OF CORNER
- 3) THE SOUTHEAST SECTION CORNER FOR SECTION 30 FOUND 1989 BLM CAP AT GROUND LEVEL
 -- 72" FIR STUMP BEARS S35 1/4°E 31.6 FEET (RECORD S35°E 31.35 FEET) NO VISIBLE MARKS
 -- 13" HEMLOCK LOW STUMP BEARS N34 3/4° E 17.9 FEET (RECORD N35°W 17.82 FEET) NO VISIBLE MARKS
 -- 15" HEMLOCK BEARS N34°E 72.9 FEET (RECORD N34°E 72.6 FEET) HEALED FACE AND TAG
 -- 15" HEMLOCK BEARS N89 1/2°E 49.15 FEET (RECORD S89 3/4°E 49.5 FEET) HEALED FACE AND TAG
 -- 14" HEMLOCK BEARS N43 1/4°W 7.7 FEET (RECORD N43 1/4°W 7.59 FEET) HEALED FACE AND TAG
 CORNER LIES ON NORTHEAST SLOPE APPROX. 60 FEET WEST OF DRAW
- 4) THE QUARTER CORNER BETWEEN SECTIONS 29 AND 30 SET 5/8" X 40" IRON ROD WITH 2 1/2" ALUMINUM CAP MARKED T 27 S R 3 W 1/4 S30 S29 2012 PLS 2291
 -- 10" DOUGLAS FIR BEARS N72 1/4°E 8.3 FEET WE SCRIBE T27 S R 3 W S29 BT AND TAG
 -- 10" DOUGLAS FIR BEARS S4°E 16.2 FEET WE SCRIBE T 27 S R 3 W S29 BT AND TAG
 -- 10" DOUGLAS FIR BEARS N30 1/4°W 14.8 FEET WE SCRIBE T 27 S R 3 W S30 BT AND TAG
 -- 10" DOUGLAS FIR BEARS S64°W 15.2 FEET WE SCRIBE T 27 S R 3 W S30 BT AND TAG
 CORNER LIES ON NORTHEAST SLOPE APPROX. 150 FEET EAST OF OLD ROCK ROAD, IN UNIFORM 9" TO 12" YOUNG TIMBER
- 5) THE NORTHEAST SECTION CORNER FOR SECTION 30 FOUND 1976 DOUGLAS COUNTY CAP WITH SMALL CAP ALONG SIDE MARKED PROPERTY CORNER AN ALUMINUM ANGLE IRON BEARS APPROX. 1.0 FEET NORTH OF CORNER
 -- 30" ROTTEN FIR SNAG BEARS S40 1/4°E 4.6 FEET (RECORD S34 1/4°E 4.6 FEET) VISIBLE BARK SCRIBE
 -- 13" CEDAR SNAG BEARS N31 1/2°W 22.5 FEET (RECORD N32°W 22.6 FEET) BURNED OUT FACE
 -- 6" DOUGLAS FIR BEARS S4 3/4°E 18.3 FEET (RECORD S4 1/2°E 18.3 FEET) VISIBLE SCRIBING AND TAG
 -- 6" DOUGLAS FIR BEARS N56°E 3.1 FEET AS PER RECORD VISIBLE SCRIBING AND TAG
 -- 6" DOUGLAS FIR BEARS S27 3/4°W 28.35 FEET (RECORD S28°W 28.4 FEET) VISIBLE SCRIBING AND TAG
 -- 7" CHINQUAPIN BEARS N58°W 23.2 FEET (RECORD N58°W 23.3 FEET) VISIBLE SCRIBING AND TAG
 CORNER LIES ON WEST FACING SLOPE APPROX. 35 FEET NORTH OF SMALL DRAW
- 6) THE QUARTER CORNER BETWEEN SECTIONS 19 AND 30 FOUND 1976 DOUGLAS COUNTY CAP AT GROUND LEVEL
 -- 30" FIR STUMP WITH BRIDGE SPIKE IN CENTER BEARS S44°E 17.5 FEET (RECORD S43°E 17.2 FEET) NO VISIBLE MARKS
 -- 43" FIR STUMP WITH IRON ROD AND ALUMINUM CAP IN MIDDLE BEARS S29 1/4°W 11.3 FEET (RECORD S29°W 11.2 FEET) NO VISIBLE MARKS
 -- 12" DOUGLAS FIR BEARS S57 1/4°W 29.2 FEET (RECORD S57 1/4°W 29.2 FEET) VISIBLE SCRIBING AND TAG
 -- 14" DOUGLAS FIR BEARS N35 3/4°W 22.0 FEET (RECORD N35 1/4°W 21.9 FEET) VISIBLE SCRIBING AND TAG
 CORNER LIES ON STEEP EAST FACING SLOPE APPROX. 130 FEET EAST OF DIRT ROAD. A SIGN POST BEARS APPROX. 3 FEET SOUTH OF CORNER
- 7) THE EAST 1/16 CORNER BETWEEN SECTIONS 19 AND 30 SET 5/8" IRON ROD WITH 2 1/2" ALUMINUM CAP MARKED LONE ROCK TIMBER E 1/16 S19 S30 2012 PLS 2291
 -- 16" DOUGLAS FIR BEARS N44°W 26.0 FEET WE SCRIBE E 1/16 S19 BT AND TAG
 -- 16" DOUGLAS FIR BEARS S36°E 31.0 FEET WE SCRIBE E 1/16 S30 BT AND TAG TREE
 CORNER LIES AT EAST EDGE OF MASS OF DOWN ROTTEN LOGS AND IS APPROX. 40 FEET SOUTH OF CREEK. PUT METAL FENCE POST APPROX. 0.2 FEET NORTH OF CORNER.
- 8) THE CENTER QUARTER CORNER FOR SECTION 30 DAVE EDWARDS SET 5/8" X 30" IRON ROD WITH 2 1/2" ALUMINUM CAP MARKED LONE ROCK TIMBER T 27 S R3 W C1/4 S30 2012 PLS 2291
 -- 7" HEMLOCK BEARS S13°W 9.3 FEET SCRIBED 1/4 S30 BT AND TAGGED
 -- 14" HEMLOCK BEARS S77°W 21.0 FEET SCRIBED 1/4 S30 BT AND TAGGED
 -- 6" DOUGLAS FIR BEARS N18 3/4°W 8.2 FEET SCRIBED 1/4 S30 BT AND TAGGED
 -- 16" HEMLOCK BEARS N55°W 19.8 FEET BLAZED FACE AND TAGGED
 -- 6 FOOT METAL POST BEARS SOUTH 2.0 FEET
 CORNER LIES ON VERY STEP SIDESLOPE BEARING S30°E DOWN SHALLOW DRAW AND APPROX. 10 FEET EAST OF DRAW BOTTOM
- 9) WEST QUARTER CORNER FOR SECTION 30 ONLY FOUND 1917 US CADASTRAL SURVEY CAP
 -- 18" FIR STUMP BEARS N11 1/4°E 71.1 FEET AS PER RECORD HEALED DOUBLE BLAZES AND TAG
 -- 34" FIR BEARS S20 1/2°E 42.4 FEET AS PER RECORD HEALED DOUBLE BLAZES TAG FRONT AND BACK
 -- 38" FIR BEARS S1 1/4°W 2.4 FEET AS PER RECORD NO MARKS VISIBLE
 -- 17" FIR BEARS N15 1/2°E 72.7 FEET AS PER RECORD HEALED BLAZE AND TAGS FRONT AND BACK
 THE QUARTER CORNER FOR SECTION 25 ONLY T. 27 S. R. 4 W. BEARS N0°19'22"E 40.76 FEET AS PER RECORD THE BEARING TREES FOR THE QUARTER CORNER FOR SECTION 25 ONLY ARE
 -- 6" FIR BEARS S67 1/4°W 19.4 AS PER RECORD VISIBLE SCRIBING AND TAG
 -- 8" FIR BEARS N35 1/4°W 28.8 FEET (RECORD N35 1/4°W 28.3 FEET) VISIBLE SCRIBING AND TAG
 THE CORNERS LIE ON FLAT RIDGE SLOPING UPWARD TO THE NORTH WITH 15 YEAR OLD REPROD TO THE WEST AND SMALL MEADOW AND SCATTERED TIMBER TO THE EAST

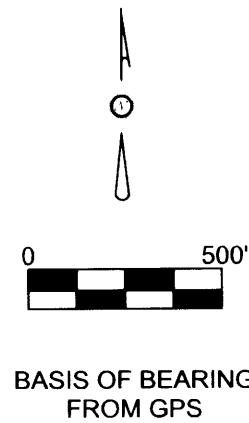


LONE ROCK PROPERTY

SENECA PROPERTY

LONE ROCK PROPERTY

SENECA PROPERTY



REGISTERED
 PROFESSIONAL
 LAND SURVEYOR

 OREGON
 JULY 16, 1987
 KEN W. HOFFINE
 LICENSE # 2291
 EXPIRES: JULY 30, 2013

LEGEND	
	1989 BLM BCIP
	1976 DOUGLAS COUNTY CAP
	SET 5/8" X 40" IRON ROD WITH 2 1/2" ALUMINUM CAP
	EDWARDS SET 5/8" X 30" IRON ROD WITH 2 1/2" ALUMINUM CAP MARKED LONE ROCK TIMBER T27S R3W C1/4 S30 2012 PLS 2291
	1917 US CADASTRAL SURVEY CAP
	LINES BLAZED AND TAGGED
	PROJECTED LINES
	BLM DEPENDENT RESURVEY PAGE 22492 FILED IN DOUGLAS COUNTY SURVEYORS OFFICE
	BLM DEPENDENT RESURVEY PAGE 18837 FILED IN DOUGLAS COUNTY SURVEYORS OFFICE
	ORIGINAL LINE NOTES PAGE 5021 FILED IN DOUGLAS COUNTY SURVEYORS OFFICE