

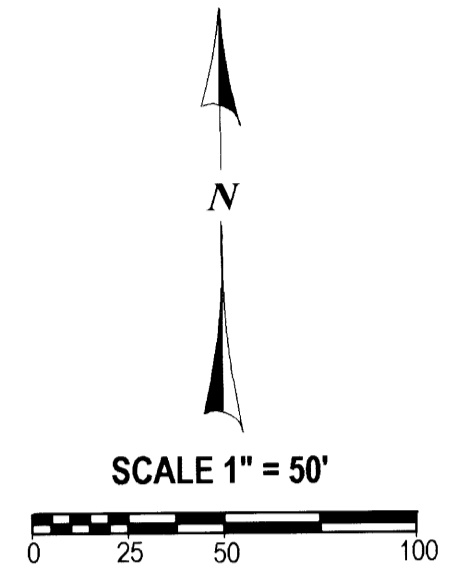
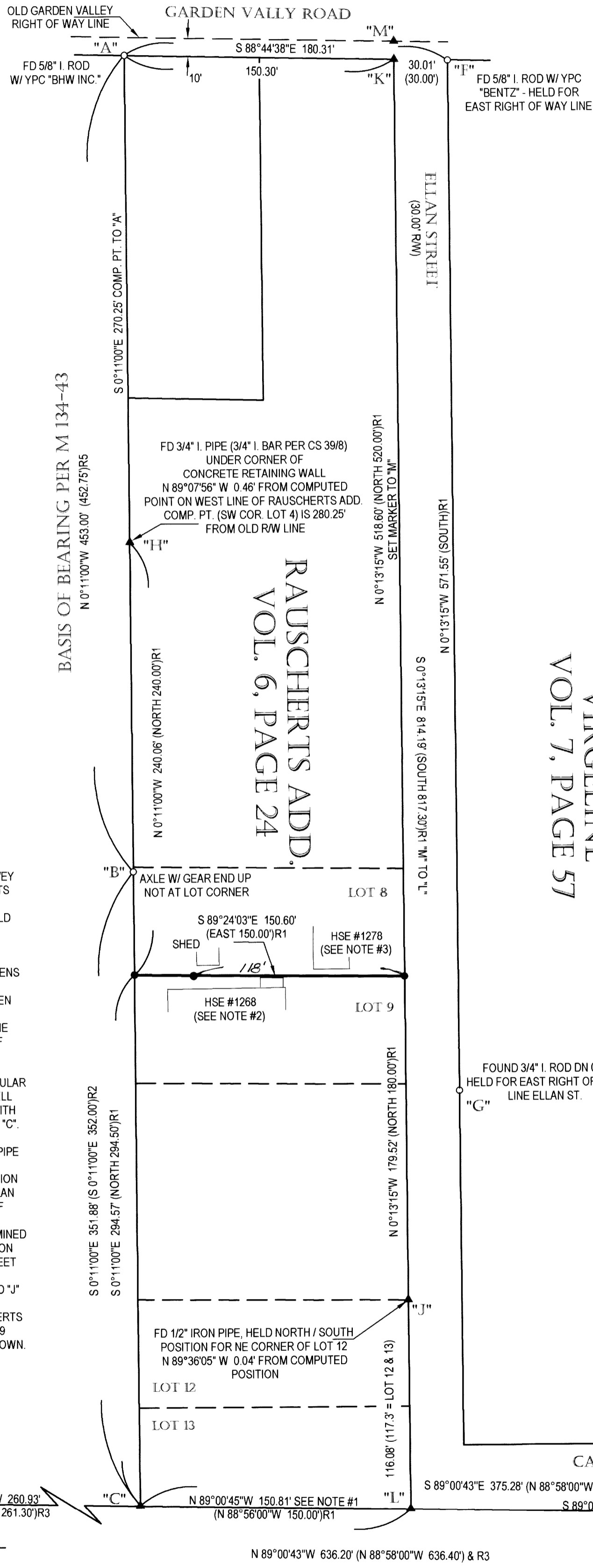
# RECORD OF SURVEY

## OF LOTS 8 AND 9, RAUSCHERTS ADDITION, VOL. 6, PAGE 24

IN THE NORTHWEST 1/4, SEC. 13, T. 27 S., R. 6 W., W. M.  
CITY OF ROSEBURG, DOUGLAS COUNTY, OREGON  
JUNE 2012

FILED  
Date: 6/22/2012 By: JC  
This survey consists of:  
Map: M163-69  
Narrative: \_\_\_\_\_  
Corner Rpt: \_\_\_\_\_

DOUGLAS COUNTY  
SURVEYOR



**LEGEND:**

- FOUND MONUMENT AS SHOWN
- SET 5/8" X 30" IRON ROD W/ RED PLASTIC CAP "SWEEDEN LS 2752"
- ▲ COMPUTED POINT, NOTHING FOUND OR SET
- ( ) RECORD PER M 134-43 MEAS. = REC. UNLESS NOTED
- ( ) R1 RECORD PER RAUSCHERTS ADDITION
- ( ) R2 RECORD PER CS 39/8
- ( ) R3 RECORD PER M 1-55 & CS 45/255
- ( ) R4 RECORD PER RM 1-16
- ( ) R5 RECORD PER M 91-64

**NARRATIVE:**

THIS SURVEY WAS COMPLETED AT THE REQUEST OF THE OWNER SHOWN TO ESTABLISH THE LOT LINE BETWEEN LOTS 8 AND 9, RAUSCHERTS ADDITION. A FIELD SEARCH AND TRAVERSE WAS COMPLETED TO LOCATE AND MAKE SURVEY TIES TO MARKERS OF RECORD FROM THE FOLLOWING SURVEYS: RAUSCHERTS ADDITION, VIRGELINE PLAT, M 134-43, CS 32/9, CS 55/59-3, CS 39/8, CS 51/40, M 91-64 AND RM 1/16. WITH THIS COMPLETED THE BASIS OF BEARING WAS HELD PER M 134-43 BETWEEN THOSE MARKERS SHOWN AT POSITIONS "A" AND "B" BEING A PORTION OF THE WEST LINE OF RAUSCHERTS ADDITION AND THEN EXTENDING THIS LINE SOUTH TO THE NORTHLINE OF ROSEBURG MEMORIAL GARDENS AT POSITION "C". THE NORTH LINE OF ROSEBURG MEMORIAL GARDENS WAS HELD AS ESTABLISHED IN M 134-43 BEING THE LINE BETWEEN "D" AND COMPUTED POSITION "E". THE EAST LINE OF RAUSCHERTS ADDITION WAS THEN ESTABLISHED PARALLEL WITH AND 30 FEET FROM THE LINE DETERMINED BY THOSE FOUND MARKERS AT "F" AND "G" WHICH WERE HELD TO ESTABLISH THE EAST LINE OF ELLAN STREET. THE 3/4" I. PIPE FOUND UNDER THE CORNER OF A CONCRETE RETAINING WALL AT POSITION "H" WAS USED AS THE NORTH / SOUTH POSITION OF THE NW CORNER OF LOT 5 AND A COMPUTED POINT ESTABLISHED ON THE WEST LINE OF RAUSCHERTS ADD. USING A PERPENDICULAR INTERSECTION FROM POSITION "H". THIS COMPUTED POSITION FITS VERY WELL WITH THE COMPUTED OLD SOUTH R/W LINE OF GARDEN VALLEY AND ALSO WITH THE COMPUTED SOUTHWEST CORNER OF RAUSCHERTS ADDITION, POSITION "C". THE OLD SOUTH R/W LINE OF GARDEN VALLEY WAS ESTABLISHED 10 FEET NORTHERLY OF THE LINE BETWEEN MARKERS AT "A" AND "F". THE 1/2" IRON PIPE FOUND AT POSITION "J" WAS HELD AS THE NORTH / SOUTH POSITION OF THE NORTHEAST CORNER OF LOT 12 AGAIN USING A PERPENDICULAR INTERSECTION TO ESTABLISH A COMPUTED POINT ON THE WEST RIGHT OF WAY LINE OF ELLAN STREET. THIS 1/2" IRON PIPE FIT VERY WELL WITH THE RIGHT OF WAY LINE OF ELLAN STREET AND IT FALLS REASONABLY WELL WHEN COMPARED TO A PROPORTIONED POSITION FOR THE NORTHEAST CORNER OF LOT 12 DETERMINED BY USING THE COMPUTED NE CORNER OF RAUSCHERTS ADDITION AT POSITION "M" AND THE POINT "L" WHERE THE WEST RIGHT OF WAY LINE OF ELLAN STREET WOULD INTERSECT WITH THE SOUTH LINE OF RAUSCHERTS ADDITION. THE SOUTHEAST CORNER OF LOT 8 WAS THEN PROPORTIONED BETWEEN "M" AND "J" AND THE SOUTHWEST CORNER PROPORTIONED BETWEEN THE COMPUTED NORTHWEST CORNER OF LOT 5 AND THE SOUTHWEST CORNER OF RAUSCHERTS ADDITION, POSITION "C". THE MARKERS FOR THE LINE BETWEEN LOTS 8 AND 9 WERE THEN SET AND ALSO A REFERENCE POINT SET ALONG THE LINE AS SHOWN.

FIELD CREW: C. SWEEDEN & E. WILDS  
EQUIPMENT: TRIMBLE S6 W/ SUPPORT  
MAPPING AND CALC'S: C. SWEEDEN

REGISTERED  
PROFESSIONAL  
LAND SURVEYOR

*Carl A. Sweeden*

OREGON  
CARL A. SWEEDEN  
2752  
JANUARY 16, 1996  
EXPIRES 6-30-12

**NOTES:**

- #1 THE PLAT OF RAUSCHERTS ADDITION DOES NOT CLOSE CORRECTLY
- #2 THE PORCH ROOF OF HOUSE #1268 IS 0.95 FEET SOUTH OF THE LOT LINE
- #3 HOUSE #1278 IS 3.7 FEET NORTH OF THE LOT LINE

**SURVEY FOR:**

EDWARD RANDALL  
1260 ELLAN STREET  
ROSEBURG, OREGON 97470

**Sweeden Land Surveying**  
Carl A. Sweeden  
P.L.S.  
Conventional & Global Positioning  
Surveying Systems  
558 S. E. Jackson St., Roseburg, OR. 97470  
Tel. 541-672-8344, Fax 541-672-1787