

BOUNDARY LINE ADJUSTMENT/PROPERTY SURVEY - PORTION OF BLOCK 4 & 22.
TOWN OF GARDINER, DOUGLAS COUNTY, OREGON
IN THE SW1/4 SE1/4 OF SECTION 22. T.21S.. R.12W.. W.M.

FLED
Date: 6/14/2012 By: JC
This survey consists of:
Map: M 163-66
Narrative:
Corner Rpt:
DOUGLAS COUNTY
SURVEYOR

PREPARED FOR:
DIXIE HASH
P.O. BOX 222
GARDINER, OR 974441

PREPARED BY:
MULKINS & RAMBO, LLC
P.O. BOX 809
NORTH BEND, OR 97459

REGISTERED
PROFESSIONAL
LAND SURVEYOR

Troy Rambo
OREGON
JULY 14, 1998
TROY J. RAMBO
2865

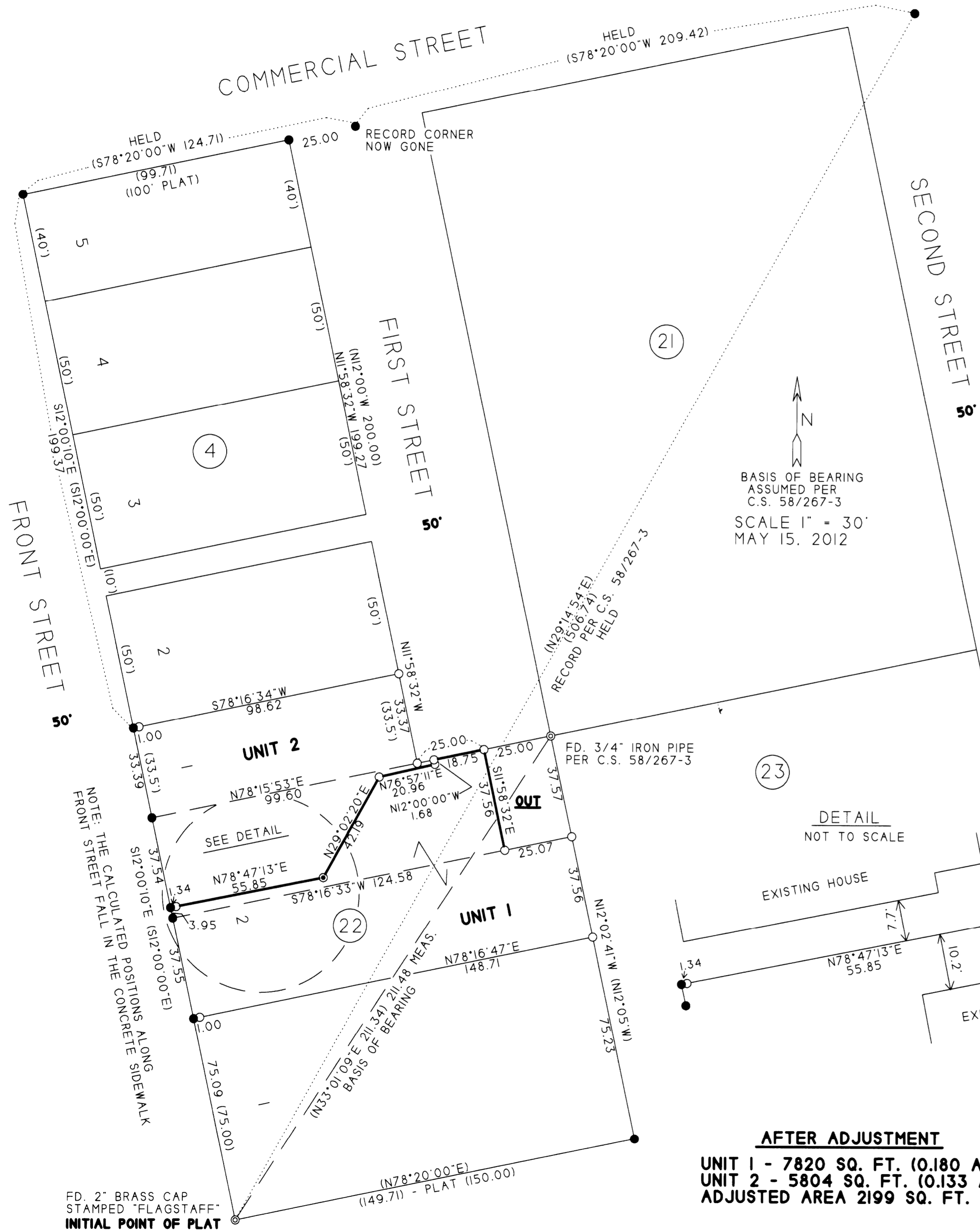
RENEWAL 12-31-12

LEGEND

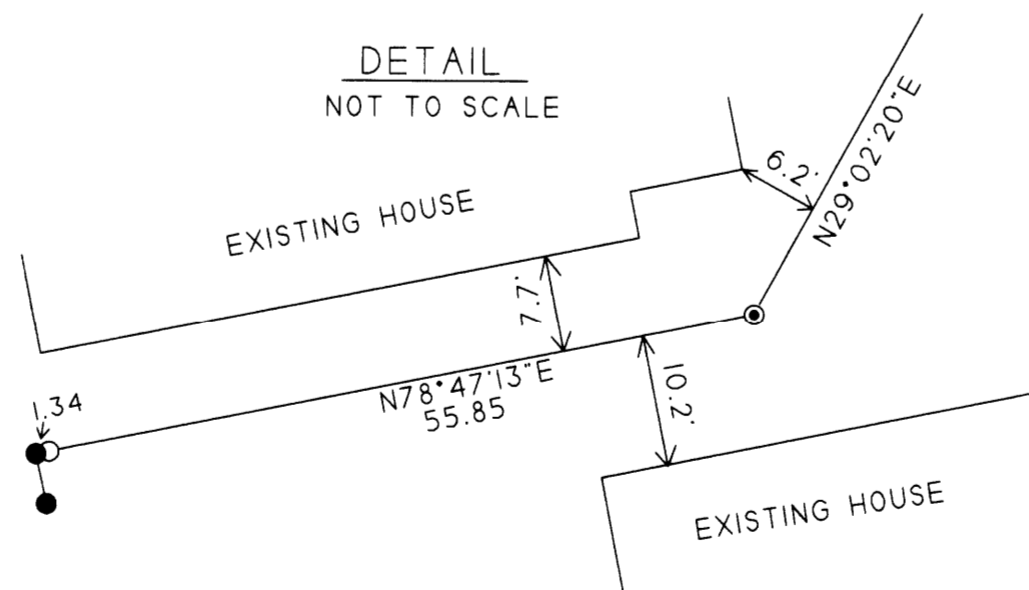
- ⊙ FD. CORNER AS SHOWN
- SET 5/8" X 30" REBAR WITH A PLASTIC CAP MKD. "LS 2865"
- ⊙ SET 1/4" X 1 1/2" MAG NAIL WITH A BRASS WASHER STAMPED "LS 2865" IN CONCRETE
- CALCULATED POSITION - NOT SET
- () RECORD BEARING / DISTANCE
- ADJUSTED LINE

NARRATIVE

THE PURPOSE OF THIS SURVEY WAS TO SET THE CORNERS AS SHOWN AND TO PREPARE A DESCRIPTION FOR A PROPERTY LINE ADJUSTMENT DEED. CONTROL FOR THIS SURVEY WAS BASED ON C.S. 58/267-3. RECORD DEEDS USED INCLUDE 1987-11937 & 1996-17853. THE FOUND CORNERS, AS SHOWN, WERE TIED TO GET ON THE COORDINATE BASIS OF C.S. 58/267-3. THE RECORD BEARINGS AND DISTANCES PER C.S. 58/267-3 WERE HELD TO CALCULATE THE BLOCK CORNERS AS SHOWN. THE RECORD PLAT DISTANCES WERE THEN PROPORTIONED ACCORDINGLY. THE FIELD WORK WAS PERFORMED BETWEEN MAY 7 AND MAY 15 BY MYSELF.



DETAIL
NOT TO SCALE



Keith L. Culbreth
PLANNING DEPT. DIRECTOR APPROVAL
PLANNING DEPT. FILE NO. 12-M028

6/14/12
DATE

AFTER ADJUSTMENT

UNIT 1 - 7820 SQ. FT. (0.180 ACRES)
UNIT 2 - 5804 SQ. FT. (0.133 ACRES)
ADJUSTED AREA 2199 SQ. FT. (0.05 ACRES)

SEE INST. NO. 2012 - 008428 FOR THE BOUNDARY LINE ADJUSTMENT DEED

MAP FILE M 163-66

MAP FILE M 163-66