

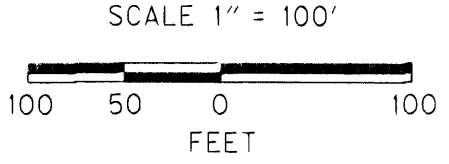
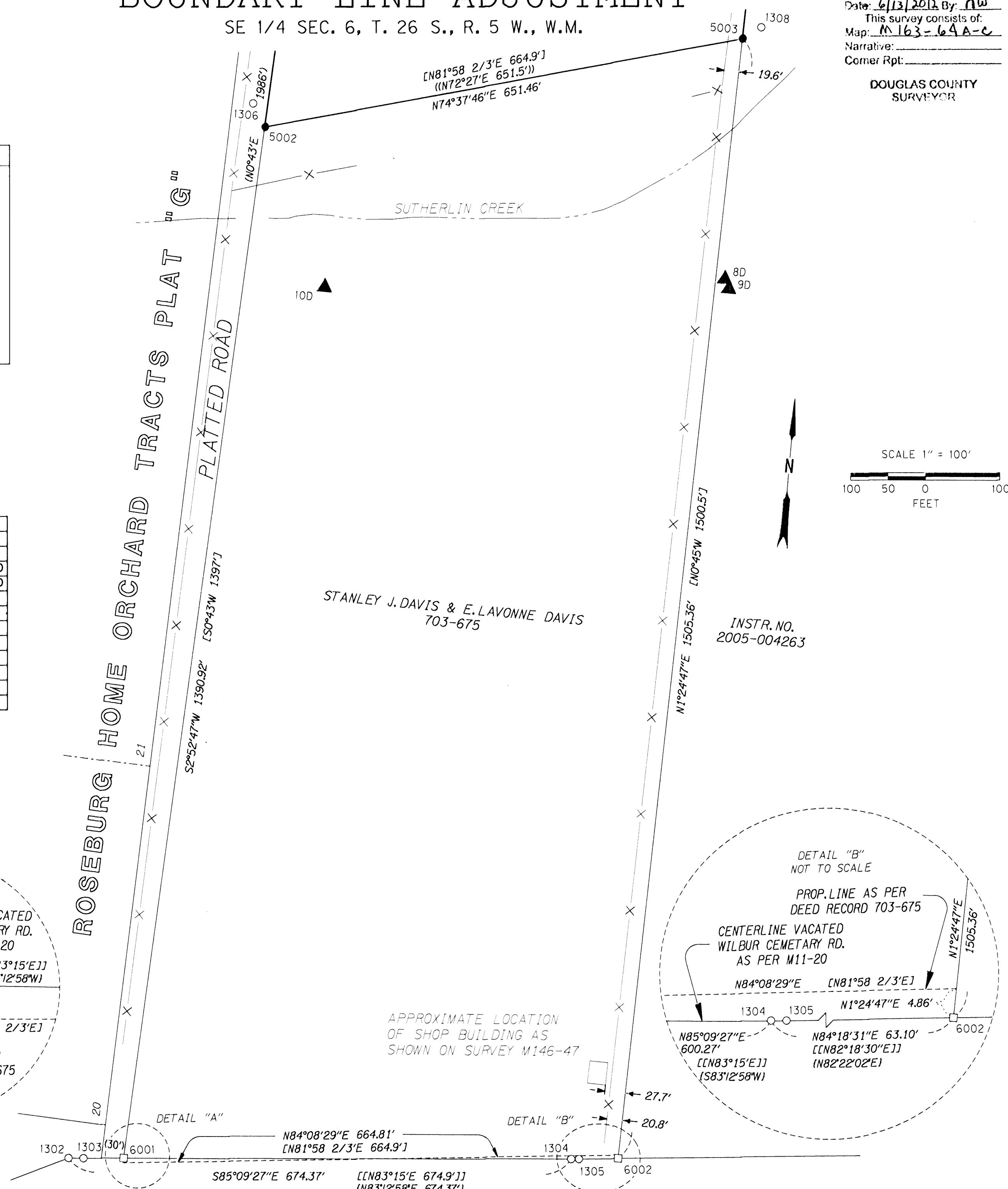
# BOUNDARY LINE ADJUSTMENT

SE 1/4 SEC. 6, T. 26 S., R. 5 W., W.M.

FILED  
 Date: 6/13/2012 By: nw  
 This survey consists of:  
 Map: M163-64A-c  
 Narrative: \_\_\_\_\_  
 Corner Rpt: \_\_\_\_\_  
**DOUGLAS COUNTY SURVEYOR**

RECORD DATA	
( )	ROSEBURG HOME ORCHARD TRACTS "PLAT G"
( )	INSTRUMENT NO. 2009-018525
[ ]	DEED RECORD 703-675
( )	SURVEY M11-20
( )	SURVEY M146-47
< >	RAILROAD SURVEY V-16/39
NO BRACKET	MEASURED/RESOLVED SUPERCEDES RECORD

NETWORK OBSERVATIONS	
OCCUPIED	MEASURED
GPS2	GPS1, 1, 2
1	GPS2, 3D, 4D, 6D, 7D
2	GPS2, 3D, 4D, 6D, 7D
3	1D, 2D, 5D
4	1D, 2D, 4D, 5D
5	3D, 4D
6	1D, 2D, 8D, 9D
7	1D, 2D, 8D, 9D
8	6D, 7D, 10D
9	6D, 7D, 10D
10	8D, 9D



CALCULATED POINTS

PT. NO.	LDP NORTHING	LDP EASTING	DESCRIPTION
6001	619257.244	4168088.819	CALCULATED POINT AT SW CORNER OF PROPERTY DESCRIBED IN DEED RECORD 703-675
6002	619314.161	4168749.732	CALCULATED POINT AT SE CORNER OF PROPERTY DESCRIBED IN DEED RECORD 703-675

RECOVERED MONUMENTS

PT. NO.	LDP NORTHING	LDP EASTING	DATE	DESCRIPTION	REFERENCE
1302	619251.111	4168014.964	8/11/11	FD. 3/4" IRON ROD W 1 1/4" CARRIAGE BOLT TYPE HEAD 0.1 FT. BELOW SURFACE IN BAD CONDITION, BENT WESTERLY, TIED WHERE ENTERS GROUND IN CENTER OF GRAVEL ROAD	M11-20
1303	619252.666	4168034.933	8/11/11	FD. 1 1/4" YELLOW PLASTIC CAP STAMPED "PLS 2287 LAND MARK" FLUSH WITH SURFACE, GOOD CONDITION, LOCATED IN CENTER OF GRAVEL ROAD	M146-47
1304	619308.010	4168687.090	8/11/11	FD. 3/4" IRON ROD 0.2 FT. BELOW SURFACE IN BAD CONDITION, BENT IN TWO PLACES, TIED WHERE ENTERS GROUND AT SOUTH EDGE OF GRAVEL ROAD	M11-20
1305	619308.946	4168697.407	8/11/11	FD. 1 1/4" YELLOW PLASTIC CAP STAMPED "PLS 2287 LAND MARK" 0.1 FT. BELOW SURFACE, GOOD CONDITION, LOCATED AT SOUTH EDGE OF GRAVEL ROAD	M146-47
1306	620676.262	4168140.412	8/11/11	FD. 5/8" IRON REBAR WITH 1 1/4" YELLOW PLASTIC CAP STAMPED "PLS 2287 LAND MARK", 0.2 FT. ABOVE SURFACE, GOOD CONDITION	M146-47
1308	620835.975	4168810.570	8/25/11	FD. 5/8" IRON REBAR WITH 1 1/4" YELLOW PLASTIC CAP STAMPED "PLS 2287 LAND MARK", 0.1 FT. ABOVE SURFACE, GOOD CONDITION	M146-47

**SI FEET** OREGON DEPARTMENT OF TRANSPORTATION  
 HORIZONTAL CONTROL, RECOVERY AND RETRACEMENT,  
 RIGHT OF WAY BOUNDARY MONUMENTATION,  
 & BOUNDARY LINE ADJUSTMENT MAP  
 I-5: DEL RIO ROAD / WINCHESTER INTERCHANGE (DECOITE PROPERTY)  
 PACIFIC HIGHWAY DOUGLAS COUNTY  
 FILE: 15186RW.DGN MODEL: RWM-DECOITE  
 FOR ODOT REGION 3 JUNE 7, 2012  
 3500 NW. STEWART PKWY. SCALE: 1" = 100'  
 ROSEBURG, OR. 97470 SHEET 3 OF 3

REGISTERED PROFESSIONAL LAND SURVEYOR  
*Andrew David Ausland*  
 OREGON  
 JULY 15, 2003  
 ANDREW DAVID AUSLAND  
 56136  
 EXPIRES: 12/31/2013

SEE LINE LEGEND ON SHEET 1

POINT LEGEND	
○	FOUND MONUMENT
▲	SET NETWORK POINT *
●	SET BOUNDARY MONUMENT
□	CALCULATED POINT

\* SEE CONTROL MONUMENT TABLE SHEET 2