

CES|NW

13190 SW 68TH PKWY, STE 150
TIGARD, OREGON 97223
503.968.6655 WWW.CESNW.COM
PROJECT NUMBER: 2611
DRAWING: 2611-ROS

RECORD OF SURVEY

FOR: PACLAND
A PORTION OF PARCEL 1, PARTITION PLAT NO. 1990-0023,
LOCATED IN THE N.E. 1/4 & S.E. 1/4 OF SECTION 11
TOWNSHIP 27 SOUTH, RANGE 6 WEST, W.M.,
DOUGLAS COUNTY, OREGON

FILED
Date: 11-23-2011 By: NW
This survey consists of:
Map: M 163-6
Narrative:
Corner Pgt:

DOUGLAS COUNTY
SURVEYOR

REGISTERED
PROFESSIONAL
LAND SURVEYOR

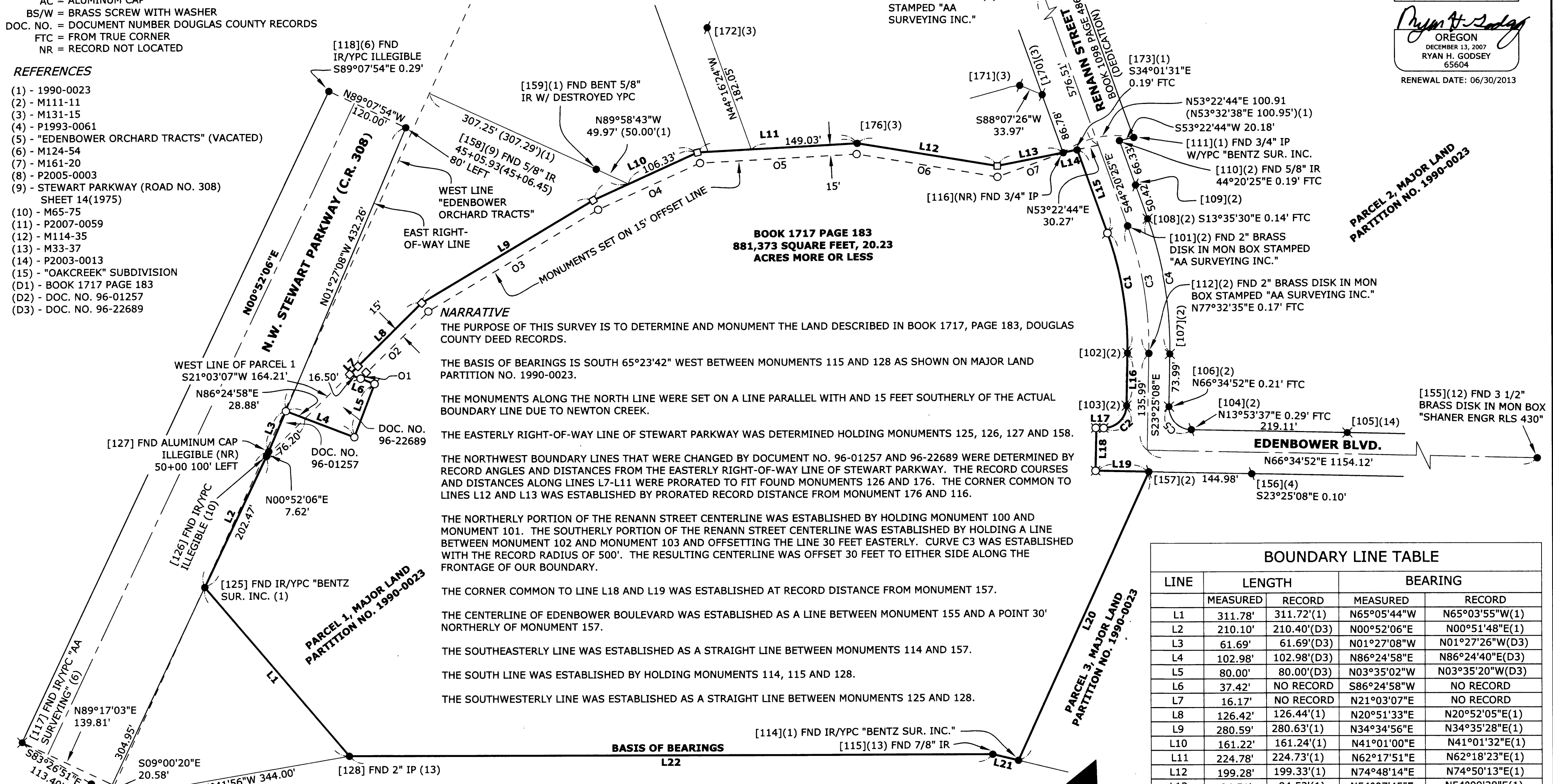
Ryan H. Godsey
OREGON
DECEMBER 13, 2007
RYAN H. GODSEY
65604
RENEWAL DATE: 06/30/2013

PARCEL 2 MAJOR LAND
PARTITION NO. 1990-0023

PARCEL 3 MAJOR LAND
PARTITION NO. 1990-0023

- LEGEND**
- = FOUND 5/8" IR W/YPC "I.E. ENG." HELD UNLESS OTHERWISE NOTED
 - = FOUND 5/8" IR W/YPC "AA SURVEYING" HELD UNLESS OTHERWISE NOTED
 - = FOUND MONUMENT HELD UNLESS OTHERWISE NOTED
 - = SET 5/8" X 30" IR W/OPC INSCRIBED "CESNW INC." ON OCTOBER 26, 2011
 - = SET 1" DIAMETER COPPER PLUG INSCRIBED "CESNW INC." ON OCTOBER 26, 2011
 - = SET 5/8" X 30" IR WITH 2" AC INSCRIBED "CESNW INC." ON OCTOBER 26, 2011
 - = CALCULATED CORNER
 - () = INDICATES RECORD VALUE PER REFERENCE NUMBER
 - (C) = INDICATES CALCULATED VALUE
 - (D#) = INDICATES DEED REFERENCE NUMBER
 - [###] = INDICATES MONUMENT NUMBER
 - IR = IRON ROD
 - W/OPC = WITH ORANGE PLASTIC CAP
 - W/YPC = WITH YELLOW PLASTIC CAP
 - AC = ALUMINUM CAP
 - BS/W = BRASS SCREW WITH WASHER
 - DOC. NO. = DOCUMENT NUMBER DOUGLAS COUNTY RECORDS
 - FTC = FROM TRUE CORNER
 - NR = RECORD NOT LOCATED

- REFERENCES**
- (1) - 1990-0023
 - (2) - M111-11
 - (3) - M131-15
 - (4) - P1993-0061
 - (5) - "EDENBOWER ORCHARD TRACTS" (VACATED)
 - (6) - M124-54
 - (7) - M161-20
 - (8) - P2005-0003
 - (9) - STEWART PARKWAY (ROAD NO. 308)
SHEET 14(1975)
 - (10) - M65-75
 - (11) - P2007-0059
 - (12) - M114-35
 - (13) - M33-37
 - (14) - P2003-0013
 - (15) - "OAKCREEK" SUBDIVISION
 - (D1) - BOOK 1717 PAGE 183
 - (D2) - DOC. NO. 96-01257
 - (D3) - DOC. NO. 96-22689



NARRATIVE

THE PURPOSE OF THIS SURVEY IS TO DETERMINE AND MONUMENT THE LAND DESCRIBED IN BOOK 1717, PAGE 183, DOUGLAS COUNTY DEED RECORDS.

THE BASIS OF BEARINGS IS SOUTH 65°23'42" WEST BETWEEN MONUMENTS 115 AND 128 AS SHOWN ON MAJOR LAND PARTITION NO. 1990-0023.

THE MONUMENTS ALONG THE NORTH LINE WERE SET ON A LINE PARALLEL WITH AND 15 FEET SOUTHERLY OF THE ACTUAL BOUNDARY LINE DUE TO NEWTON CREEK.

THE EASTERLY RIGHT-OF-WAY LINE OF STEWART PARKWAY WAS DETERMINED HOLDING MONUMENTS 125, 126, 127 AND 158.

THE NORTHWEST BOUNDARY LINES THAT WERE CHANGED BY DOCUMENT NO. 96-01257 AND 96-22689 WERE DETERMINED BY RECORD ANGLES AND DISTANCES FROM THE EASTERLY RIGHT-OF-WAY LINE OF STEWART PARKWAY. THE RECORD COURSES AND DISTANCES ALONG LINES L7-L11 WERE PRORATED TO FIT FOUND MONUMENTS 126 AND 176. THE CORNER COMMON TO LINES L12 AND L13 WAS ESTABLISHED BY PRORATED RECORD DISTANCE FROM MONUMENT 176 AND 116.

THE NORTHERLY PORTION OF THE RENANN STREET CENTERLINE WAS ESTABLISHED BY HOLDING MONUMENT 100 AND MONUMENT 101. THE SOUTHERLY PORTION OF THE RENANN STREET CENTERLINE WAS ESTABLISHED BY HOLDING A LINE BETWEEN MONUMENT 102 AND MONUMENT 103 AND OFFSETTING THE LINE 30 FEET EASTERLY. CURVE C3 WAS ESTABLISHED WITH THE RECORD RADIUS OF 500'. THE RESULTING CENTERLINE WAS OFFSET 30 FEET TO EITHER SIDE ALONG THE FRONTAGE OF OUR BOUNDARY.

THE CORNER COMMON TO LINE L18 AND L19 WAS ESTABLISHED AT RECORD DISTANCE FROM MONUMENT 157.

THE CENTERLINE OF EDENBOWER BOULEVARD WAS ESTABLISHED AS A LINE BETWEEN MONUMENT 155 AND A POINT 30' NORTHERLY OF MONUMENT 157.

THE SOUTHEASTERLY LINE WAS ESTABLISHED AS A STRAIGHT LINE BETWEEN MONUMENTS 114 AND 157.

THE SOUTH LINE WAS ESTABLISHED BY HOLDING MONUMENTS 114, 115 AND 128.

THE SOUTHWESTERLY LINE WAS ESTABLISHED AS A STRAIGHT LINE BETWEEN MONUMENTS 125 AND 128.

CURVE TABLE

CURVE	RADIUS	LENGTH	CHORD	CHORD BEARING	DELTA
C1	470.00'	171.62'	170.67'	S33°52'46"E	20°55'17"
C2	470.00'	171.72'	170.77'	S33°52'02"E	20°56'01"
C3	32.00'	50.27'	45.25'	S21°34'52"W	90°00'00"
C4	32.00'	50.25'	45.25'	S21°35'58"W	90°00'00"
C5	500.00'	182.57'	181.56'	S33°52'46"E	20°55'17"
C6	530.00'	193.53'	192.45'	S33°52'46"E	20°55'17"
C7	32.00'	50.27'	45.25'	S68°25'08"E	90°00'00"

OFFSET LINE TABLE

LINE	LENGTH	BEARING
O1	9.32'	N21°03'07"E
O2	124.64'	N20°51'33"E
O3	277.94'	N34°34'56"E
O4	157.55'	N41°01'00"E
O5	220.32'	N62°17'51"E
O6	200.37'	N74°48'14"E
O7	98.40'	N45°21'39"E

BOUNDARY LINE TABLE

LINE	LENGTH		BEARING	
	MEASURED	RECORD	MEASURED	RECORD
L1	311.78'	311.72'(1)	N65°05'44"W	N65°03'55"W(1)
L2	210.10'	210.40'(D3)	N00°52'06"E	N00°51'48"E(1)
L3	61.69'	61.69'(D3)	N01°27'08"W	N01°27'26"W(D3)
L4	102.98'	102.98'(D3)	N86°24'58"E	N86°24'40"E(D3)
L5	80.00'	80.00'(D3)	N03°35'02"W	N03°35'20"W(D3)
L6	37.42'	NO RECORD	S86°24'58"W	NO RECORD
L7	16.17'	NO RECORD	N21°03'07"E	NO RECORD
L8	126.42'	126.44'(1)	N20°51'33"E	N20°52'05"E(1)
L9	280.59'	280.63'(1)	N34°34'56"E	N34°35'28"E(1)
L10	161.22'	161.24'(1)	N41°01'00"E	N41°01'32"E(1)
L11	224.78'	224.73'(1)	N62°17'51"E	N62°18'23"E(1)
L12	199.28'	199.33'(1)	N74°48'14"E	N74°50'13"E(1)
L13	94.51'	94.53'(1)	N54°07'45"E	N54°09'38"E(1)
L14	20.18'	20.19'(1)	N53°22'44"E	N53°32'38"E(1)
L15	124.76'	124.60'(1)	S44°20'25"E	S44°20'03"E(1)
L16	73.99'	73.75'(1)	S23°25'08"E	S23°23'59"E(1)
L17	9.86'	10.00'(1)	S66°34'52"W	S66°36'01"W(1)
L18	60.00'	60.00'(1)	S23°25'08"E	S23°23'59"E(1)
L19	74.82'	74.82'(1)	N66°34'52"E	N66°36'01"E(1)
L20	443.48'	443.52'(1)	S00°01'07"E	SOUTH(1)
L21	37.04'	36.98'(1)	S78°52'16"W	S78°52'52"W(1)
L22	903.67'	903.64'(1)	S65°23'42"W	S65°23'42"W(1)

