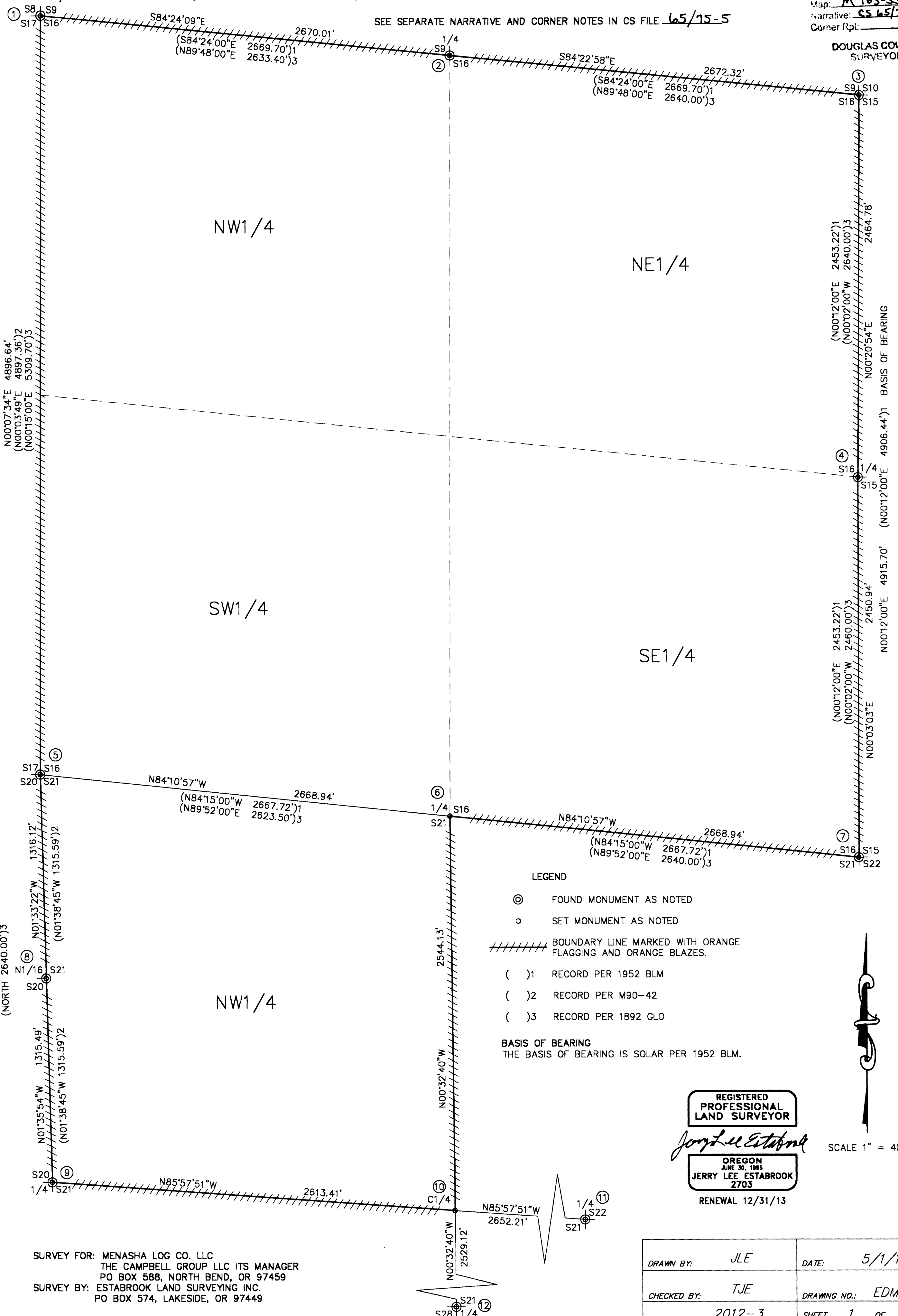


PROPERTY SURVEY LOCATED IN THE NE1/4, NW1/4, SW1/4 & SE1/4 OF SECTION 16 AND THE NW1/4 OF SECTION 21, TOWNSHIP 20 SOUTH, RANGE 10 WEST, W.M., DOUGLAS COUNTY, OREGON.

FILED
 Date: 5/17/2012 By: NW
 This survey consists of:
 Map: M 163-55
 Narrative: CS 65/15-5A thru D
 Corner Rpt: _____

DOUGLAS COUNTY
 SURVEYOR

SEE SEPARATE NARRATIVE AND CORNER NOTES IN CS FILE 65/15-5



LEGEND

- ⊙ FOUND MONUMENT AS NOTED
- SET MONUMENT AS NOTED
- ////// BOUNDARY LINE MARKED WITH ORANGE FLAGGING AND ORANGE BLAZES.
- ()1 RECORD PER 1952 BLM
- ()2 RECORD PER M90-42
- ()3 RECORD PER 1892 GLO

BASIS OF BEARING
 THE BASIS OF BEARING IS SOLAR PER 1952 BLM.

REGISTERED
 PROFESSIONAL
 LAND SURVEYOR

Jerry Lee Estabrook

OREGON
 JUNE 30, 1985
 JERRY LEE ESTABROOK
 2703

RENEWAL 12/31/13

SCALE 1" = 400'

SURVEY FOR: MENASHA LOG CO. LLC
 THE CAMPBELL GROUP LLC ITS MANAGER
 PO BOX 588, NORTH BEND, OR 97459
 SURVEY BY: ESTABROOK LAND SURVEYING INC.
 PO BOX 574, LAKESIDE, OR 97449

DRAWN BY: <u>JLE</u>	DATE: <u>5/1/12</u>
CHECKED BY: <u>TJE</u>	DRAWING NO.: <u>EDMONDS</u>
JOB NO.: <u>2012-3</u>	SHEET <u>1</u> OF <u>1</u>

Date: 5/1/2012

Property survey located in the NE $\frac{1}{4}$, NW $\frac{1}{4}$, SW $\frac{1}{4}$, and SE $\frac{1}{4}$ of Section 16 and the NW $\frac{1}{4}$ of Section 21, Township 20 South, Range 10 West W.M., Douglas County, Oregon.

Survey for: Menasha Log Co. LLC, The Campbell Group LLC, It's Manager. PO Box 588, North Bend, Oregon 97459

Survey by: Estabrook Land Surveying, Inc. PO Box 574 Lakeside, Oregon 97449

Narrative:

The purpose of this survey was to mark boundary lines for logging purposes.

The procedure was as follows: I located and tied the Northeast, Northwest, Southwest, Southeast North $\frac{1}{4}$ and East $\frac{1}{4}$ corners of Section 16. I searched for the original West $\frac{1}{4}$ corner, but could not find it. Richard Hintz calculated this corner at a midpoint between the section corners when he subdivided Section 17 as shown on M90-42. However, the GLO notes call for the $\frac{1}{4}$ corner to be 40.45 chains from the section corner to the north and 40.00 chains from the section corner to the south. The GLO notes also say that the $\frac{1}{4}$ corner falls on a ridge. For these considerations a lot of thought and reasoning is going to be needed to establish the $\frac{1}{4}$ corner in question. My clients own all of Section 16, so there is no need to establish the West $\frac{1}{4}$ of Section 16. I then searched for the South $\frac{1}{4}$ corner of Section 16. BLM established this corner in 1952 at a midpoint between section corners. The corner falls in a washed out draw. I could not find this corner. I therefore establish it at a midpoint between section corners. The draw has been washed out to bedrock on the bottom and sides. This made it impractical to drive an iron rod for a monument. I therefore chopped an X in the rock face at the corner position and set a reference monument and marked bearing trees for the X chop marking the corner. I then marked the west, north, east and east $\frac{1}{2}$ of the south boundaries of Section 16 as shown on separate map. I then located and tied the North $\frac{1}{16}$ corner on the west boundary of Section 21 and the West $\frac{1}{4}$ corner of Section 21. I then marked the boundary line from the Northwest corner of Section 21 to said North $\frac{1}{16}$ corner and then to the said West $\frac{1}{4}$ corner. I then located and tied the South and East $\frac{1}{4}$ corners of Section 21 and subdivided the section to establish the center $\frac{1}{4}$ corner. I then marked the east and south boundaries of the Northwest $\frac{1}{4}$ of Section 21.

Equipment used was a Topcon 312 Total Station with HP48/TDS data collector.

Assisting personnel were Jed Massey and Josh Maxwell.

FILED

Date: 5/17/2012 By: HW
 This survey consists of:
 Map: M 163-55
 Narrative: CS 65/75-5 A thru end
 Corner Rpt: _____

DOUGLAS COUNTY
 SURVEYOR

C.S. File No 65/75-5 A

Corner Notes:

1. Corner Sections 8, 9, 16 & 17 – Found monument: 2" iron pipe with brass cap marked T20S R10W S8 S9 S17 S16 1951. Per BLM
 Found BTs: 40" fir stump with healed face and tags, bears N35 3/4°E 33.3'
 A rotten stob with no visible marks bears S69 1/2°E 38.5'
 An 18" fir stump with healed face bears S25°E 10.5'.
 An 18" fir stump with healed face bears S20°W 8.6'.
 A 22" fir stump no visible marks bears N32°W 20.8'.
 New BT's marked:
 A 12" fir face scribed "NW S16 BT" with x-chop and tag bears S80°E 7.8' to a spike at side center.
 An 8" fir face scribed "NE S17 BT" with x-chop and tag bears S60°W 2.9' to a spike at side center.
 A 10" fir face scribed "SE S8 BT" with x-chop and tag bears N27°W 10.9' to a spike at side center.
2. ¼ Corner Sections 9 & 16
 Found monument: A 1" iron pipe with 2 ½" brass cap marked "1/4 S9 S16 1952" in mound of stones. Per BLM
 Found BTs: A 48" fir snag with tag and no visible marks bears S 77 1/2°W 25.7'.
 New BTs marked: 9" fir face scribed "N1/4 S16 BT" with x-chop and tag bears S49°E 2.4' to a spike at side center.
 A 10" fir face scribed "N1/4 S16 BT" with x-chop and tag bears S54°W 19.5' to a spike at side center.
 A 10" fir face scribed "S1/4 S9 BT" with x-chop and tag bears N65°W 8.4' to a spike at side center.
3. Corner Sections 9, 10, 15 & 16
 Found monument: A 2" iron pipe with 2 ½" brass cap marked "T20S R10W S9 S10 S15 & S16 1952. Per BLM
 Found BTs: A 36" fir stump with healed face and tag bears N76°E 7.9'.
 A 56" fir stump with healed face and tag bears S24 1/2°E 8.6'.
 A 28" hemlock stump with rotten face bears S76°W 46.2'.
 New BTs marked: A 12" fir face scribed "NE S16 BT" with x-chop and tag bears S38°W 22.5' to a spike at side center.
 A 13" fir face scribed "SE S9 BT" with x-chop and tag bears N61°W 9.7' to a spike at side center.
4. ¼ Corner Sections 15 & 16
 Found monument: A 1" iron pipe with 2 ½" brass cap marked "1/4 S15 S16 1952" Per BLM
 Found BTs: A 32" fir stump with visible scribe and new tag bears S18°E 26.4' to face.
 A 20" cedar stump with no visible marks and new tag bears N08°W 13.2'.
 New BTs marked: A 13" fir face scribed "W1/4 S15 BT" with x-chop and tag bears N73°E 5.5' to a spike at side center. A 17" fir face scribed "W1/4 S15 BT" with x-chop and tag bears S07°E 10.4' to a spike at side center.
5. Corner Sections 16, 17, 20 & 21
 Found monument: A brass cap marked " County Surveyors office T20S R10W S16 S17 S20 S21 1968" Per Douglas County.

Found BTs: A 66" fir stump with no visible marks and tag bears N 52 3/4°E 132.0'.

A 30" fir stump with healed face and tag bears N 58 1/2°E 130.0'.

New BTs marked: A 32" triple trunk hemlock face scribed "SW S16 BT" with x-chop and tag bears N87°E 89.3' to a spike at side center.

A 31" double trunk maple face scribed "BT" with x-chop and tag bears S04°E 59.1' to a spike at side center.

An 11" alder bark scribed "NE S20 BT" with x-chop and tag bears S20°W 16.0' to a spike at side center.

An 11" alder bark scribed "NE S20 BT" with x-chop and tag bears S70°W 5.9' to a spike at side center.

6. ¼ Corner Sections 16 & 21

Marked corner location with x-chop in rock face.

Set reference monument: A 5/8" x 30" iron rod with plastic cap marked "Estabrook LS 2703" bears N84°08'30"E 43.84' from x-chop marking ¼ corner.

BTs marked for the ¼ corner position:

A 10" alder bark scribed "S1/4 S16 BT" with x-chop and tag bears N56°E 46.8' to a spike at side center.

A 29" fir face scribed "N1/4 S21 BT" with x-chop and tag bears S60°E 84.1' to a spike at side center.

An 18" fir face scribed "N1/4 S21 BT" with x-chop and tag bears S12°W 32.0' to a spike at side center.

A 14" alder bark scribed "N1/4 S21 BT" with x-chop and tag bears S62°W 7.0' to a spike at side center.

Note: Centerline of draw bears east 15.0'

7. Corner Sections 15, 16, 21 & 22

Found monument: A 2" iron pipe with 2 1/2" brass cap marked "T20S R10W S15 S16 S21 S22 1952". Per BLM

Found BTs: A 54" fir stump with no visible marks and new tag bears S63 1/2°E 50.2'.

A 60" fir stump with healed face and new tag bears N61°W 56.8'.

New BTs marked: A 20" fir face scribed "NW S22 BT" with x-chop and tag bears S86°E 31.5' to a spike at side center.

A 20" fir face scribed "NW S22 BT" with x-chop and tag bears S37°E 19.7' to a spike at side center.

A 12" fir face scribed "SE S16 BT" with x-chop and tag bears N39°W 32.1' to a spike at side center.

8. N 1/16 corner Sections 20 & 21

Found monument: A 1 ¼" iron pipe with 2 ½" brass cap marked "T20S R10W S20 S21 PLS 497" Per M90-42.

Found BT: A 42" maple with tag and new bark scribed "X" bears N47°E 44.4'

New BT marked: A 15" fir face scribed "N1/16 S20 BT" with x-chop and tag bears S40°W 54.0' to a spike at side center.

9. ¼ corner Sections 20 & 21

Found monument: A 1 ¼" iron pipe with 2 ½" brass cap marked "T20S R10W S20 ¼ S21 PLS 497".
Per M90-42

Found BT: A 64" fir stump with no visible marks bears N62°W 101.4'.

New BTs marked: A 6" fir face scribed "W1/4 S21 BT" with x-chop and tag bears N58°E 2.4' to a spike at side center.

An 8" fir face scribed "E1/4 S20 BT" with x-chop and tag bears S40°W 8.7' to a spike at side center.

An 11" fir face scribe "E1/4 S20 BT" with x-chop and tag bears N39°W 8.6' to a spike at side center.

10. C1/4 Corner Section 21

Set monument: A 3/4" x 30" iron rod with 2" aluminum cap marked "C1/4 S21 2012 LS2703".

BTs marked: A 13" fir face scribed "C1/4S21BT" with x-chop and tag bears N11°E 6.7' to a spike at side center.

A 10" fir face scribed "C1/4S21BT" with x-chop and tag S49°E 13.2' to a spike at side center.

A 17" fir face scribed "C1/4S21BT" with x-chop and tag bears S01°E 7.7' to a spike at side center.

A 20" fir face scribed "C1/4S21BT" with x-chop and tag bears S77°W 15.4' to a spike at side center.

11. ¼ Corner Sections 21 & 22

Found monument: A 1" iron pipe with 2 1/2" brass cap marked "1/4 S21 S22 1952". Per BLM
Found BTs: A 60" fir stump with no visible marks and new tag bears N05°E 25.1'.

A 50" fir stump with healed face and new tag bears N17°W 34.3'.

New BTs marked: A 19" fir face scribed "W1/4 S22 BT" with x-chop and tag bears S77°E 9.4' to a spike at side center.

A 17" fir face scribed "E1/4 S21 BT" with x-chop and tag bears S17°W 5.8' to a spike at side center.

12. ¼ Corner Sections 21 & 28

Found monument: A ¾" iron pipe per M42-2.

Found BTs: A 21" maple with tag bears S06 1/2°E 37.4'.

A dead maple with tag bears N70 1/2°W 44.5'.

New BTs marked: A 21" fir face scribed "S1/4 S21 BT" with x-chop and tag bears N70°E 57.0' to a spike at side center.

A 17" fir face scribed "N1/4 S28 BT" with x-chop and tag bears S44°E 36.4' to a spike at side center.

