

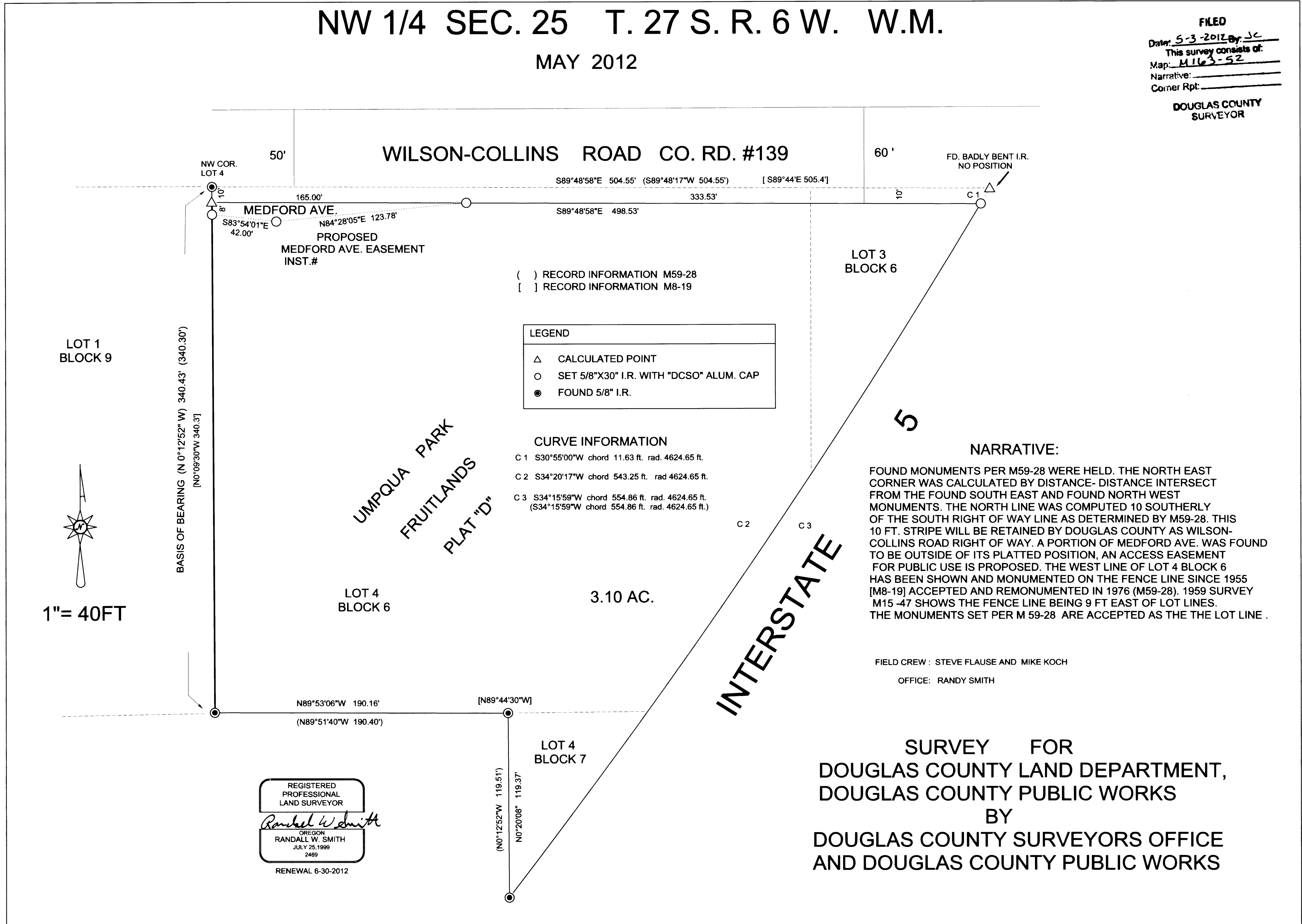
# NW 1/4 SEC. 25 T. 27 S. R. 6 W. W.M.

MAY 2012

FILED  
 Date: 5-3-2012 By: JC  
 This survey consists of:  
 Map: M163-52  
 Narrative: \_\_\_\_\_  
 Corner Rpt: \_\_\_\_\_

DOUGLAS COUNTY  
 SURVEYOR

MAP FILE M163-52



- ( ) RECORD INFORMATION M59-28
- [ ] RECORD INFORMATION M8-19

LEGEND	
△	CALCULATED POINT
○	SET 5/8"X30" I.R. WITH "DCSO" ALUM. CAP
●	FOUND 5/8" I.R.

- CURVE INFORMATION**
- C 1 S30°55'00"W chord 11.63 ft. rad. 4624.65 ft.
  - C 2 S34°20'17"W chord 543.25 ft. rad 4624.65 ft.
  - C 3 S34°15'59"W chord 554.86 ft. rad. 4624.65 ft.  
 (S34°15'59"W chord 554.86 ft. rad. 4624.65 ft.)

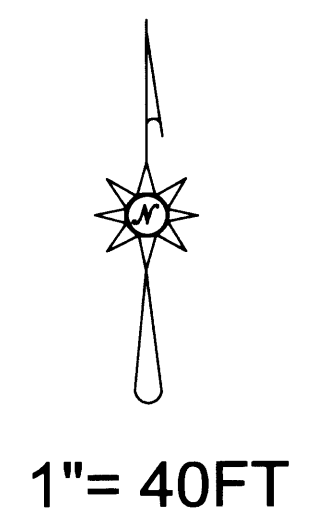
**NARRATIVE:**

FOUND MONUMENTS PER M59-28 WERE HELD. THE NORTH EAST CORNER WAS CALCULATED BY DISTANCE- DISTANCE INTERSECT FROM THE FOUND SOUTH EAST AND FOUND NORTH WEST MONUMENTS. THE NORTH LINE WAS COMPUTED 10 SOUTHERLY OF THE SOUTH RIGHT OF WAY LINE AS DETERMINED BY M59-28. THIS 10 FT. STRIPE WILL BE RETAINED BY DOUGLAS COUNTY AS WILSON-COLLINS ROAD RIGHT OF WAY. A PORTION OF MEDFORD AVE. WAS FOUND TO BE OUTSIDE OF ITS PLATTED POSITION, AN ACCESS EASEMENT FOR PUBLIC USE IS PROPOSED. THE WEST LINE OF LOT 4 BLOCK 6 HAS BEEN SHOWN AND MONUMENTED ON THE FENCE LINE SINCE 1955 [M8-19] ACCEPTED AND REMONUMENTED IN 1976 (M59-28). 1959 SURVEY M15-47 SHOWS THE FENCE LINE BEING 9 FT EAST OF LOT LINE. THE MONUMENTS SET PER M 59-28 ARE ACCEPTED AS THE THE LOT LINE .

FIELD CREW : STEVE FLAUSE AND MIKE KOCH  
 OFFICE: RANDY SMITH

**SURVEY FOR**  
**DOUGLAS COUNTY LAND DEPARTMENT,**  
**DOUGLAS COUNTY PUBLIC WORKS**  
**BY**  
**DOUGLAS COUNTY SURVEYORS OFFICE**  
**AND DOUGLAS COUNTY PUBLIC WORKS**

REGISTERED  
 PROFESSIONAL  
 LAND SURVEYOR  
*Randall W. Smith*  
 OREGON  
 RANDALL W. SMITH  
 JULY 25, 1999  
 2489  
 RENEWAL 6-30-2012



MAP FILE M163-52