

PROPERTY SURVEY LOCATED IN THE NE1/4 OF SECTION 29, T20S, R10W, WM, DOUGLAS COUNTY, OREGON.

SURVEY FOR: MENASHA LOG CO. LLC
 THE CAMPBELL GROUP, LLC ITS MANAGER
 PO BOX 588, NORTH BEND, OR 97459

SURVEY BY: ESTABROOK LAND SURVEYING INC.
 PO BOX 574, LAKESIDE, OR 97449

FILED
 Date: 3/28/2012 By: JLE
 This survey consists of:
 Map: M 163-41
 Narrative:
 Corner Rpt:
 DOUGLAS COUNTY
 SURVEYOR

NARRATIVE:

THE PURPOSE OF THIS SURVEY WAS TO MARK BOUNDARY LINES FOR LOGGING OPERATIONS. THE PROCEDURE WAS TO PERFORM A RETRACEMENT SURVEY OF RECORD SURVEY M42-2 WHICH WAS A RETRACEMENT SURVEY OF RECORD SURVEY M1-56. I SURVEYED BETWEEN FOUND MONUMENTS AND MARKED BOUNDARY LINE AS SHOWN HEREON. I THEN CALCULATED CENTER SOUTH 1/16 CORNER AND THE SOUTH 1/16 CORNER PER M42-2 AND THE EAST 1/4 CORNER PER GLO PLAT. I THEN SURVEYED TO THE WEST 1/4 CORNER AND TIED THE FOUND MONUMENT THERE. I THEN CALCULATED THE CENTER 1/4 CORNER POSITION AND MONUMENTED IT AS SHOWN. EQUIPMENT USED WAS A TOPCON 312 TOTAL STATION WITH HP48/ TDS DATA COLLECTOR. ASSISTING PERSONNEL WAS JED MASSEY AND JOSH MAXWELL.

BASIS OF BEARING:

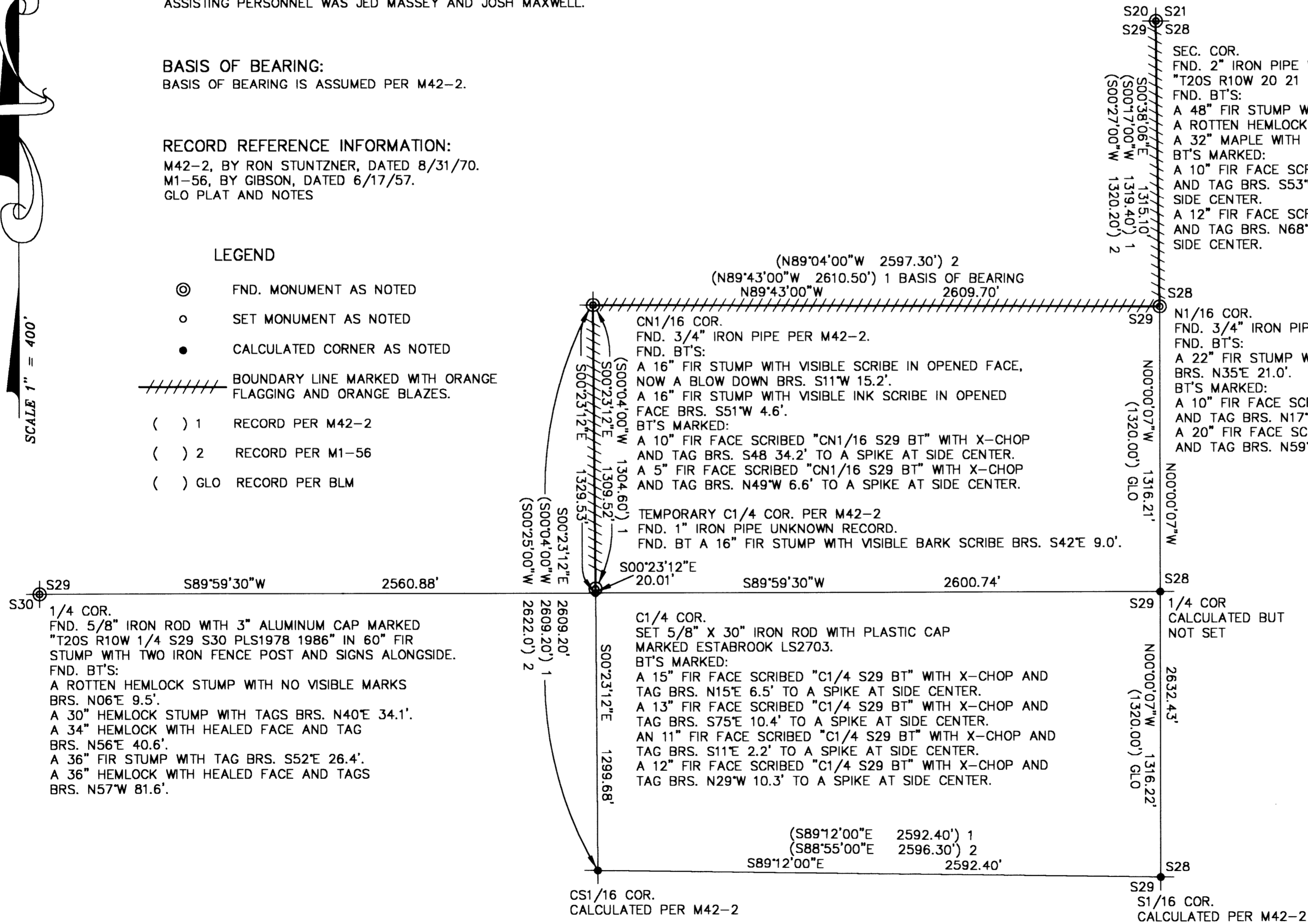
BASIS OF BEARING IS ASSUMED PER M42-2.

RECORD REFERENCE INFORMATION:

M42-2, BY RON STUNTZNER, DATED 8/31/70.
 M1-56, BY GIBSON, DATED 6/17/57.
 GLO PLAT AND NOTES

LEGEND

- ⊙ FND. MONUMENT AS NOTED
- SET MONUMENT AS NOTED
- CALCULATED CORNER AS NOTED
- ////// BOUNDARY LINE MARKED WITH ORANGE FLAGGING AND ORANGE BLAZES.
- () 1 RECORD PER M42-2
- () 2 RECORD PER M1-56
- () GLO RECORD PER BLM



S20 S21
 S29 S28
 SEC. COR.
 FND. 2" IRON PIPE WITH BRASS CAP MARKED
 "T20S R10W 20 21 28 29 1970 650" PER CS 55/148.
 FND. BT'S:
 A 48" FIR STUMP WITH NO VISIBLE MARKS BRS. N35°E 46.4'.
 A ROTTEN HEMLOCK STUMP WITH NO VISIBLE MARKS BRS. S01°E 54.5'.
 A 32" MAPLE WITH HEALED FACE BRS. N68°W 26.2'.
 BT'S MARKED:
 A 10" FIR FACE SCRIBED "NE S29 BT" WITH X-CHOP
 AND TAG BRS. S53°W 13.7' TO A SPIKE AT
 SIDE CENTER.
 A 12" FIR FACE SCRIBED SE "S20 BT" WITH X-CHOP
 AND TAG BRS. N68°W 26.2' TO A SPIKE AT
 SIDE CENTER.

S28
 S29
 N1/16 COR.
 FND. 3/4" IRON PIPE PER M42-2.
 FND. BT'S:
 A 22" FIR STUMP WITH VISIBLE SCRIBING IN OPENED FACE
 BRS. N35°E 21.0'.
 BT'S MARKED:
 A 10" FIR FACE SCRIBED "N1/16 S28 BT" WITH X-CHOP
 AND TAG BRS. N17°E 21.7' TO A SPIKE AT SIDE CENTER.
 A 20" FIR FACE SCRIBED "N1/16 S28 BT" WITH X-CHOP
 AND TAG BRS. N59°E 25.6' TO A SPIKE AT SIDE CENTER.

S28
 S29
 1/4 COR
 CALCULATED BUT
 NOT SET

REGISTERED
 PROFESSIONAL
 LAND SURVEYOR

 OREGON
 JUNE 30, 1995
 JERRY LEE ESTABROOK
 2703
 RENEWAL 12/31/13

DRAWN BY: JLE	DATE: 3/21/12
CHECKED BY: TJE	DRAWING NO.: RAILRD
JOB NO.: 2012-2	SHEET 1 OF 1

MAP FILE M 163-41

MAP FILE M 163-41