

BOUNDARY SURVEY IN
NE 1/4 AND SE 1/4 OF SECTION 30, T23S, R1W, W.M.
DOUGLAS AND LANE COUNTIES, OREGON
 DECEMBER 15, 2011

FILED
 Date: 1/25/2012 By: DLW
 This survey consists of:
 Map: M 163-26
 Narrative:
 Corner Rpt:
 DOUGLAS COUNTY
 SURVEYOR

MAP FILE M 163-26

SCALE 1"=500'

① SECTION CORNER 19, 20, 29, 30
 FOUND: 1 1/2" IRON PIPE PER COUNTY SURVEY FILE NO. 10707
 26" HEMLOCK, N87°W, 53.1'-1977 GEORGIA-PACIFIC BEARING TREE
 MARKED: 15" FIR, N42°E, 31.0'-SCRIBED "T23SR1WS20 BT"
 6" FIR, S86°E, 5.3' - SCRIBED "X S29 BT"
 10" FIR, S34°W, 34.2' - SCRIBED "T23SS1WS30 BT"
 SET 6 FOOT STEEL POST ALONGSIDE CORNER

② 1/4 CORNER 29 & 30
 FOUND: 28" HEMLOCK, S50°E, 6.0' TO CENTER-ORIGINAL BEARING TREE
 SET: 5/8" X 36" REBAR WITH 2 1/2" ALUMINUM CAP
 MARKED: 10" HEMLOCK, N56°E, 25.6' - SCRIBED "1/4S29 BT"
 9" HEMLOCK, S37°W, 28.8' - SCRIBED "1/4S30 BT"
 14" CEDAR, N73°W, 35.3' - SCRIBED "1/4S30 BT"
 NOTE: 60" BROKEN FIR, BEARS NORTH, 6.0 FEET (POSSIBLE LINE TREE
 AS CALLED IN ORIGINAL NOTE AT NORTH 9 LINKS)
 SET 6 FOOT STEEL POST ALONGSIDE CORNER



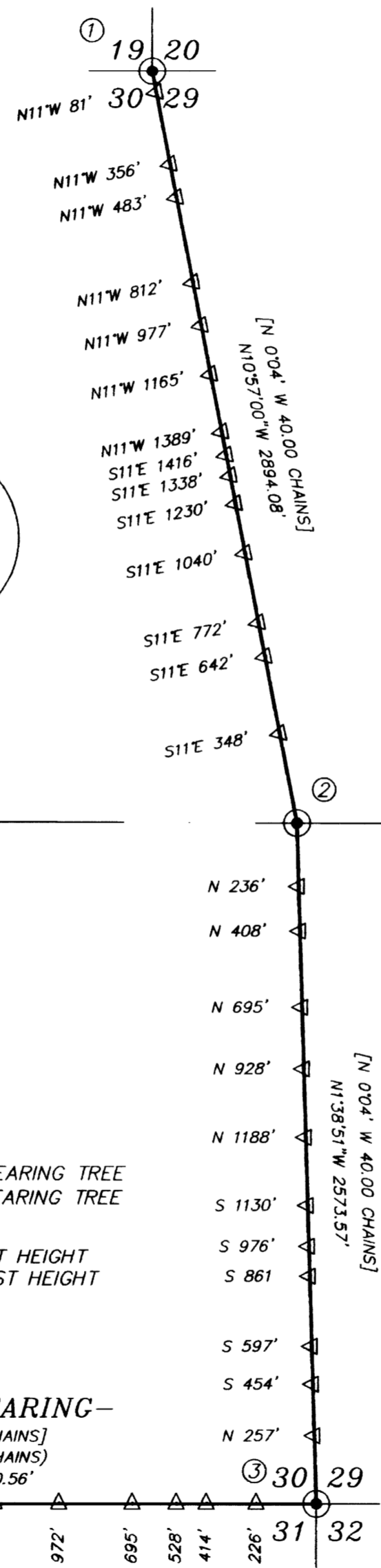
③ SECTION CORNER 29, 30, 31, 32
 FOUND: 3-1/4" BLM BRASS CAP "1964"
 39" CAPPED FIR STUMP (5' HIGH), S84°W, 10.5'-ORIGINAL BEARING TREE
 36" CAPPED FIR STUMP (5' HIGH), S24°E, 12.5'-ORIGINAL BEARING TREE
 57" FIR STUMP, N18°W, 38.8'- ORIGINAL BEARING TREE
 MARKED: 5" FIR, S24°W, 5.3'-SCRIBED "S30 BT" AND "X" AT BREAST HEIGHT
 6" FIR, N63°W, 54' - SCRIBED "S31 BT" AND "X" AT BREAST HEIGHT
 SET 6 FOOT STEEL POST ALONGSIDE CORNER

-BASIS OF BEARING-
 [N89°45'E 40.00 CHAINS]
 [N89°58'W 4.3.00 CHAINS]
 N89°58'00"W 2820.56'

④ 1/4 CORNER 30 & 31
 FOUND: 3-1/4" BLM BRASS CAP "1964"
 26" FIR, N60°E, 20.0' (RECORD=18.8')-2004-CS65/52-2
 25" FIR, S5°E, 31.1'-1964 BLM BEARING TREE
 35" FIR, N20°W, 33.6'-BLM BEARING TREE
 29" FIR, N65°W, 12.3'-ORIGIN UNKNOWN
 SET 6 FOOT STEEL POST ALONGSIDE CORNER

ASSESSOR'S MAP NO. 2301W00 TAX LOT 700

MAP FILE M 163-26



-NARRATIVE-

THIS SURVEY WAS MADE IN OCTOBER, NOVEMBER AND DECEMBER, 2011 BY DANIEL W. BAKER OF BAKER AND ASSOCIATES SURVEYORS, INC. FOR WEYERHAEUSER COMPANY. THE PURPOSE OF THIS SURVEY WAS TO LOCATE AND MARK IN THE FIELD THE SECTION LINE COMMON TO SECTIONS 29 AND 30 AND THE EAST 1/2 OF THE SECTION LINE COMMON TO SECTIONS 30 AND 31, TOWNSHIP 23 SOUTH, RANGE 1 WEST, WILLAMETTE MERIDIAN. THE BASIS OF BEARING FOR THIS SURVEY WAS THE THE EAST 1/2 OF THE SECTION LINE COMMON TO SECTIONS 30 AND 31, TOWNSHIP 23 SOUTH, RANGE 1 WEST, WILLAMETTE MERIDIAN PER THE 1966 BUREAU OF LAND MANAGEMENT SURVEY. CLOSED TRAVERSES, WITH A MINIMUM ERROR OF CLOSURE OF 1' IN 10,000' BEFORE ANGULAR ADJUSTMENT, WERE RUN BETWEEN CONTROLLING CORNERS FOR CONTROL. THE 1/4 CORNER COMMON TO SECTIONS 30 AND 31 AND THE SECTION CORNER COMMON TO SECTIONS 29, 30, 31 AND 32 WERE MONUMENTED WITH A BUREAU OF LAND MANAGEMENT 2 1/2" IRON POST AND 3 1/4" BRASS CAP. THE SECTION CORNER COMMON TO SECTIONS 19, 20, 29 AND 30 WAS MONUMENTED WITH A 1 1/2" IRON PIPE SET IN LANE COUNTY SURVEY FILE NO. 10707. AT THE 1/4 CORNER COMMON TO SECTIONS 29 AND 30, THE ORIGINAL 1894 SOUTHEAST BEARING TREE WAS FOUND AND A 5/8" X 36" REBAR WITH A 2 1/2" ALUMINUM CAP WAS SET AT RECORD BEARING AND DISTANCE FROM THIS ORIGINAL BEARING TREE. THIS LOCATION ALSO FIT THE REMAINS OF WHAT WAS ASSUMED TO BE THE ORIGINAL 60" LINE TREE, WHICH WAS 9 LINKS N0°04'W FROM THE 1/4 CORNER POSITION (THERE WERE NO MARKS FOUND ON WHAT WAS ASSUMED TO BE THE LINE TREE). THE TRUE PROPERTY LINES (SECTION LINES) WERE MARKED BY BLAZING TREES ON EITHER SIDE OF THE TRUE LINE (BLAZES PAINTED ORANGE) AND BY SETTING 6 FOOT STEEL POSTS AT RANDOM INTERVALS ALONG THE TRUE LINE, AS SHOWN. NO NEW CORNERS WERE ESTABLISHED IN THIS SURVEY.

BASIS OF BEARING: EAST 1/2 OF THE SOUTH LINE OF SECTION 30, T23S, R1W, W.M. PER 1966 BLM SURVEY

LEGEND

- - CORNERS FOUND (AS NOTED)
- - CORNERS SET - 5/8" X 36" REBAR WITH 2 1/2" ALUMINUM CAP MARKED AS SHOWN
- - CALCULATED POINT (NOTHING SET)
- - BLAZED AND PAINTED PROPERTY LINE
- [] - RECORD DATA - 1872 GLO SURVEY
- () - RECORD DATA - PRIVATE SURVEYS AS SHOWN
- △ - 6 FOOT STEEL POSTS SET ON PROPERTY LINE (DISTANCES AND CARDINAL DIRECTION ARE TO THE NEAREST CORNER I.E. = SOUTH 123')
- CSF - LANE COUNTY SURVEY FILE NO.
- CS - COUNTY SURVEY NO. - DOUGLAS COUNTY

REGISTERED
 PROFESSIONAL
 LAND SURVEYOR
 DANIEL W. BAKER
 1978

EXPIRES 12/31/13

I CERTIFY THAT THIS MAP WAS PREPARED USING A HP51645A INK CARTRIDGE ON JPC-4M2 DOUBLE MATTE FILM

| | |
|--|------------------------------------|
| BOUNDARY SURVEY IN NE 1/4 & SE 1/4 OF SECTION 30, T23S, R1W, W.M. DOUGLAS & LANE COUNTIES, OREGON | |
| CLIENT: | WEYERHAEUSER COMPANY |
| DRAWN BY: DWB | BAKER AND ASSOCIATES, SURVEYORS |
| DATE: 12/15/11 | 1347 MARKET STREET |
| FILE: PL230130 | SPRINGFIELD, OREGON (541) 343-7243 |