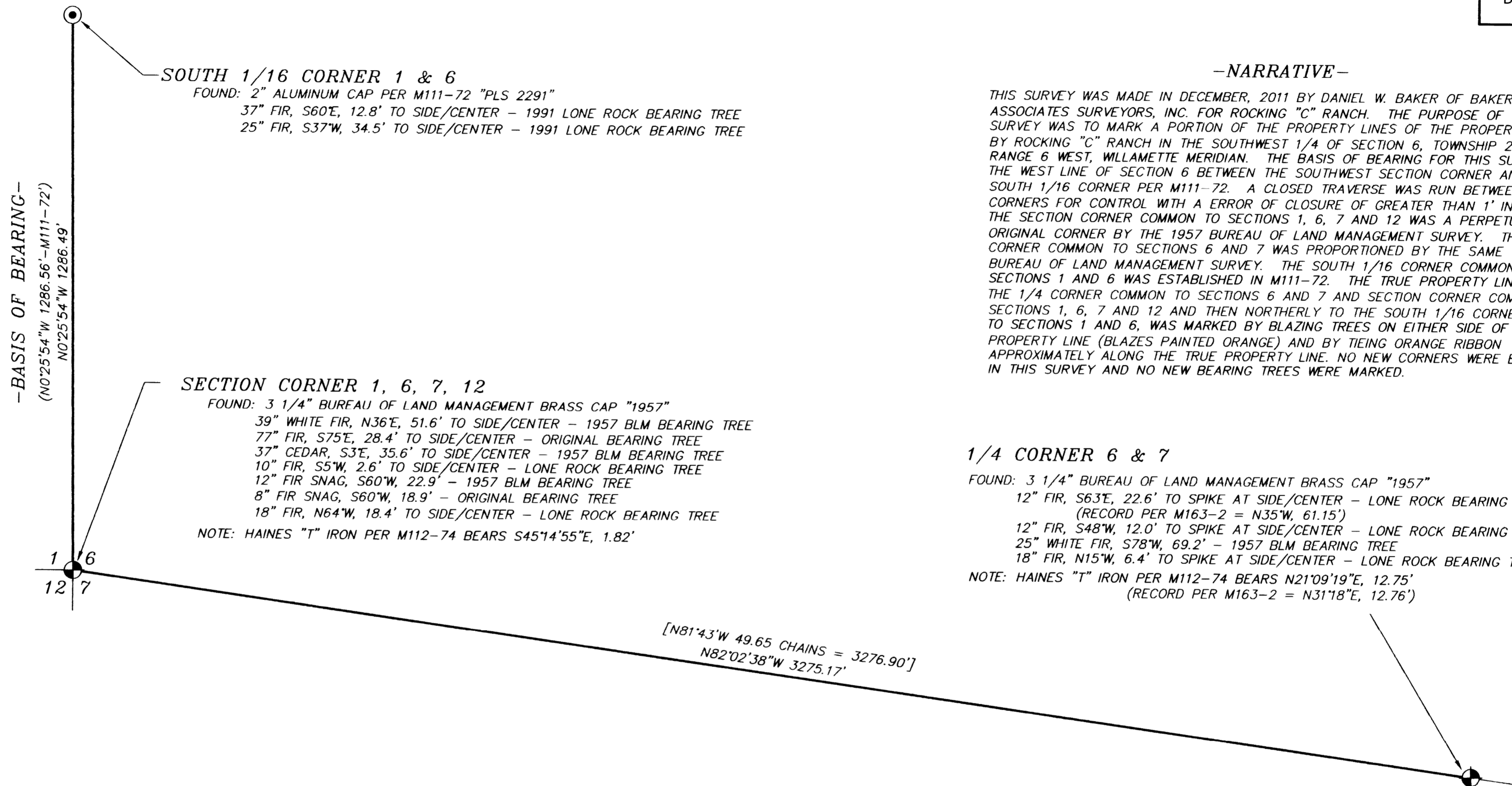


PROPERTY LINE SURVEY
IN THE
SOUTHWEST 1/4 OF SECTION 6, T23S, R6W, W.M.
DOUGLAS COUNTY, OREGON
DECEMBER 14, 2011

FILED
Date: 1/25/2012 By: DWB
This survey consists of:
Map: M 163-25
Narrative: _____
Corner Rpt: _____
DOUGLAS COUNTY
SURVEYOR

SCALE 1"=200'



-NARRATIVE-
THIS SURVEY WAS MADE IN DECEMBER, 2011 BY DANIEL W. BAKER OF BAKER AND ASSOCIATES SURVEYORS, INC. FOR ROCKING "C" RANCH. THE PURPOSE OF THIS SURVEY WAS TO MARK A PORTION OF THE PROPERTY LINES OF THE PROPERTY OWNED BY ROCKING "C" RANCH IN THE SOUTHWEST 1/4 OF SECTION 6, TOWNSHIP 23 SOUTH, RANGE 6 WEST, WILLAMETTE MERIDIAN. THE BASIS OF BEARING FOR THIS SURVEY WAS THE WEST LINE OF SECTION 6 BETWEEN THE SOUTHWEST SECTION CORNER AND THE SOUTH 1/16 CORNER PER M111-72. A CLOSED TRAVERSE WAS RUN BETWEEN FOUND CORNERS FOR CONTROL WITH A ERROR OF CLOSURE OF GREATER THAN 1' IN 20,000'. THE SECTION CORNER COMMON TO SECTIONS 1, 6, 7 AND 12 WAS A PERPETUATED ORIGINAL CORNER BY THE 1957 BUREAU OF LAND MANAGEMENT SURVEY. THE 1/4 CORNER COMMON TO SECTIONS 6 AND 7 WAS PROPORTIONED BY THE SAME 1957 BUREAU OF LAND MANAGEMENT SURVEY. THE SOUTH 1/16 CORNER COMMON TO SECTIONS 1 AND 6 WAS ESTABLISHED IN M111-72. THE TRUE PROPERTY LINE BETWEEN THE 1/4 CORNER COMMON TO SECTIONS 6 AND 7 AND SECTION CORNER COMMON TO SECTIONS 1, 6, 7 AND 12 AND THEN NORTHERLY TO THE SOUTH 1/16 CORNER COMMON TO SECTIONS 1 AND 6, WAS MARKED BY BLAZING TREES ON EITHER SIDE OF THE TRUE PROPERTY LINE (BLAZES PAINTED ORANGE) AND BY TIEING ORANGE RIBBON APPROXIMATELY ALONG THE TRUE PROPERTY LINE. NO NEW CORNERS WERE ESTABLISHED IN THIS SURVEY AND NO NEW BEARING TREES WERE MARKED.

BASIS OF BEARING: WEST LINE OF SECTION 6 BETWEEN SOUTHWEST SECTION CORNER AND WEST 1/16 CORNER PER M111-72

LEGEND

- ⊙ - CORNERS FOUND - 5/8" REBAR WITH 2" ALUMINUM CAP PER M111-72
- ⊕ - PUBLIC LAND SURVEY CORNERS FOUND -AS NOTED
- - BLAZED AND PAINTED PROPERTY LINE
- () - RECORD SURVEY DATA, AS SHOWN

REGISTERED
PROFESSIONAL
LAND SURVEYOR
Daniel W. Baker
OREGON
JULY 16, 1982
DANIEL W. BAKER
1978

EXPIRES 12/31/13

I CERTIFY THAT THIS MAP WAS PREPARED USING A HP51645A INK CARTRIDGE ON JPC-4M2 DOUBLE MATTE FILM

PROPERTY LINE SURVEY IN SOUTHWEST 1/4 OF SECTION 6, T23S, R6W, W.M. DOUGLAS COUNTY, OREGON	
CLIENT:	ROCKING "C" RANCH
DRAWN BY:	DWB
DATE:	12/14/11
FILE:	RC230606-SW
BAKER AND ASSOCIATES, SURVEYORS 1347 MARKET STREET SPRINGFIELD, OREGON 97477 (541) 343-7243	