

FILED

Date: 9-26-2011 By: J.C.  
This survey consists of:  
Map: M162-73  
Narrative: \_\_\_\_\_  
Corner Rpt: \_\_\_\_\_

# A SURVEY FOR DOYLE FAMILY TRUST

LOCATED IN THE NE 1/4 OF SECTION 13, T27S, R6W, W.M., DOUGLAS COUNTY, OREGON  
ALSO LOCATED IN LOTS 1,2,&3, BLOCK 15, RIVERSIDE ADDITION TO ROSEBURG

DOUGLAS COUNTY  
SURVEYOR

### NARRATIVE:

THE PURPOSE OF THIS SURVEY IS TO MONUMENT LOT 1, AND ALSO THE PROPERTY CORNER NEAR THE NW CORNER OF LOT 2, ALL IN BLOCK 15, RIVERSIDE ADDITION.

THE SW CORNER OF LOT 1 WAS FOUND. THE SE CORNER OF LOT 1 WAS CALCULATED BY DISTANCE-DISTANCE INTERSECTION AS SHOWN. TWO MONUMENTS WERE SET ON THE TRIANGLE GIVEN FOR CITY R/W. THESE WERE PLACED 20' NORTHERLY AND 20' WESTERLY FROM THE SE CORNER OF LOT 1. THE NE CORNER OF LOT 1 WAS PLACED ON THE EAST LINE OF BLOCK 15, 50.00' NORTHERLY OF SAID SE CORNER OF LOT 1.

THE NW CORNER OF LOT 3 WAS ALSO CALCULATED BY DISTANCE-DISTANCE INTERSECTION USING THE RECORDS SHOWN. THE NW CORNER OF LOT 1 WAS SET BY PROPORTION. THE PROPERTY CORNER NEAR THE NW CORNER OF LOT TWO WAS SET AT RECORD DISTANCE FROM THE CALCULATED NW CORNER OF LOT 3 ACCORDING TO THE DISTANCE SHOWN ON SURVEY CS 55/72-3.

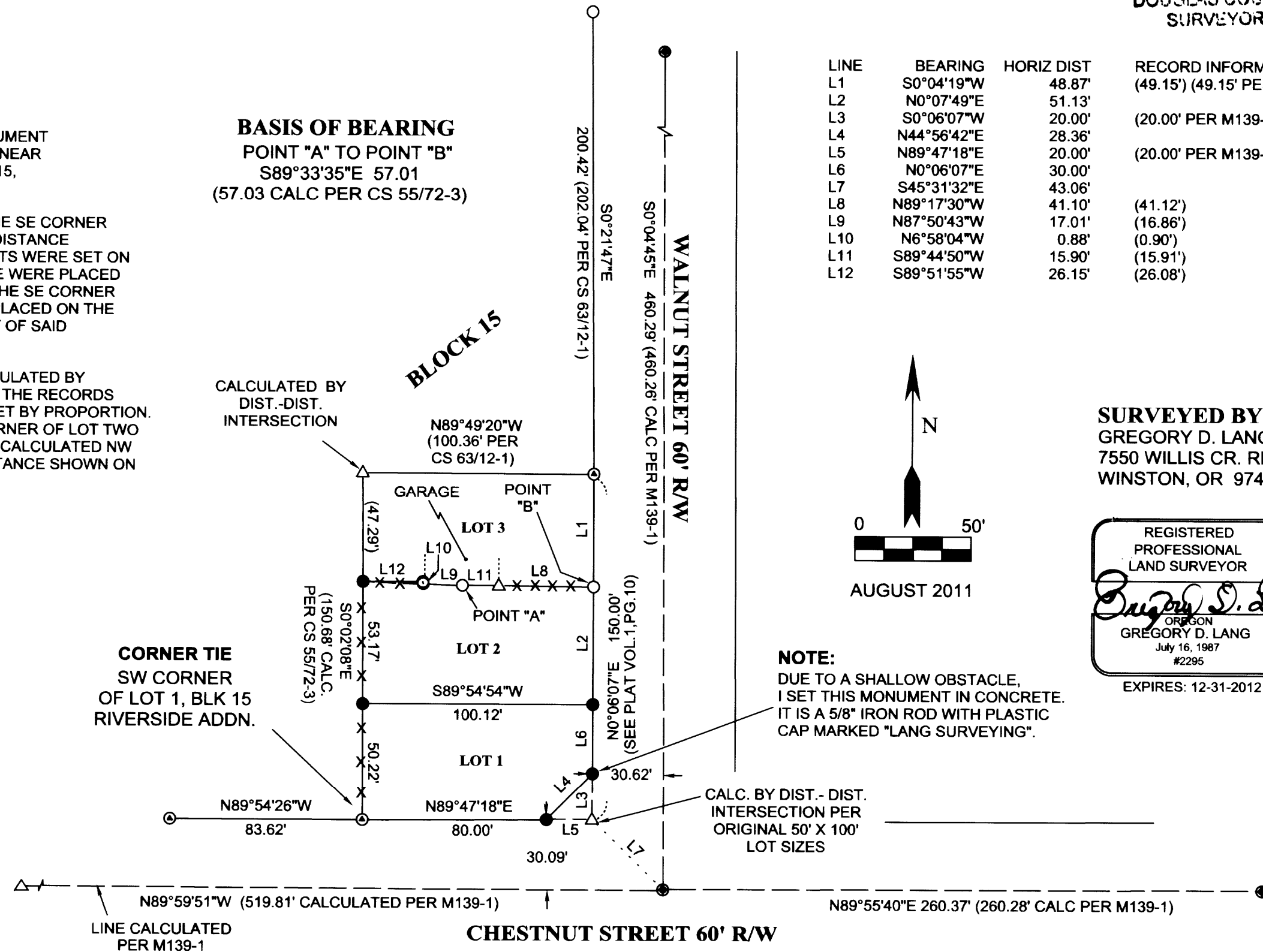
FIELD CREW: G.LANG  
CALCULATIONS: G.LANG  
DRAWING: G.LANG  
EQUIPMENT: NIKON DTM 420

### LEGEND:

- △ CALCULATED POINT
- FOUND 5/8" IRON ROD
- SET 5/8" X 30" IRON ROD WITH PLASTIC CAP MARKED "LANG SURVEYING" UNLESS OTHERWISE NOTED
- ⊙ FOUND 3/4" IRON ROD
- ⊙ FOUND BRASS CAP STREET MONUMENT IN STEEL CASE
- ( ) RECORD PER CS 55/72-3 UNLESS OTHERWISE NOTED

**BASIS OF BEARING**  
POINT "A" TO POINT "B"  
S89°33'35"E 57.01  
(57.03 CALC PER CS 55/72-3)

LINE	BEARING	HORIZ DIST	RECORD INFORMATION
L1	S0°04'19"W	48.87'	(49.15') (49.15' PER CS 63/12-1)
L2	N0°07'49"E	51.13'	
L3	S0°06'07"W	20.00'	(20.00' PER M139-1)
L4	N44°56'42"E	28.36'	
L5	N89°47'18"E	20.00'	(20.00' PER M139-1)
L6	N0°06'07"E	30.00'	
L7	S45°31'32"E	43.06'	
L8	N89°17'30"W	41.10'	(41.12')
L9	N87°50'43"W	17.01'	(16.86')
L10	N6°58'04"W	0.88'	(0.90')
L11	S89°44'50"W	15.90'	(15.91')
L12	S89°51'55"W	26.15'	(26.08')



**SURVEYED BY:**  
GREGORY D. LANG  
7550 WILLIS CR. RD.  
WINSTON, OR 97496

REGISTERED  
PROFESSIONAL  
LAND SURVEYOR

*Gregory D. Lang*

OREGON  
GREGORY D. LANG  
July 16, 1987  
#2295

EXPIRES: 12-31-2012

**NOTE:**  
DUE TO A SHALLOW OBSTACLE,  
I SET THIS MONUMENT IN CONCRETE.  
IT IS A 5/8" IRON ROD WITH PLASTIC  
CAP MARKED "LANG SURVEYING".

MAP FILE M162-73

MAP FILE M162-73