

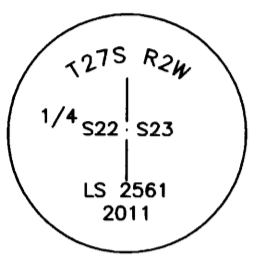
LITTLE RIVER PROPERTY LINE MAINTENANCE RECORD OF SURVEY FOR THE UMPQUA NATIONAL FOREST IN THE SW 1/4 OF THE NW 1/4 OF SECTION 23 T.27 S., R.2 W., W.M. DOUGLAS COUNTY, OREGON JUNE 20, 2011

FILED
Date: 7-14-2011 By: JC
This survey consists of:
Map: M162-52
Narrative:
Corner Rpt:
DOUGLAS COUNTY
SURVEYOR



A: Quarter Corner S22 & S23

Set a 3-1/2" Aluminum Cap on 2-1/2" Aluminum Pipe projecting 8" above ground in mound of stone, marked as shown, set directly over found 1" Iron Pipe vertical sub-surface, found 2-1/4" Aluminum cap with 4" of rusted off pipe attached laying nearby. From which:
[] = K. DeGroot Record () = CSF# M79-44 Record when differs from DeGroot



- A 60" Cedar Stump bears N38°15'W[N37°W] 52.7 FT.[53.0'], with rotting face.
- A 25" Fir bears S40°15'E[S39°E] 44.6 FT.[45.5'], Healed Double Blaze.
- A 30" Cedar Stump bears S59°15'E[S58°E] 38.1 FT.[39.6'], with visible scribe "1/4 S23 BT" on barkless stump, new 7" fir growing out of stump.
- A 19" Hemlock bears N53°15'W[N50°W](N53°W) 47.4 FT.[47.2'], with Healed Double Blaze.

B: North 1/16 S22 & S23

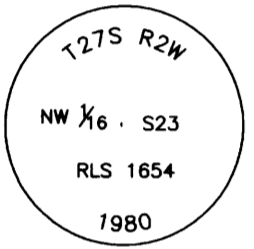
Found a 2-1/2" Brass Cap on 2-1/2" Galvanized Iron Pipe, marked as shown, flush with mound of stone and earth. From which;



- A 21" Hemlock bears [N58°W 39.1 FT. Record], with Healed Double Blaze.
- A 16" Fir bears [S3°30'E 12.1 FT. Record](S8°E), with Healed Double Blaze.
- A 1-1/2" Iron Pipe bears [West 2.0 FT. Record] (N88W-1.95FT)

C: North West 1/16 S23

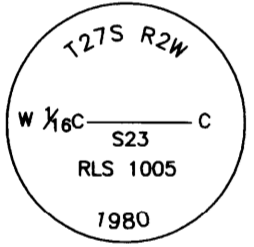
Found a 2-1/2" Brass Cap on 2-1/2" Galvanized Iron Pipe, marked as shown, Projecting 1 inch above loose mound of stone. From which;



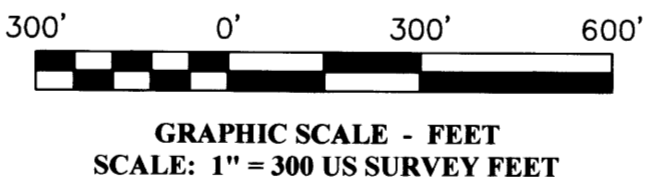
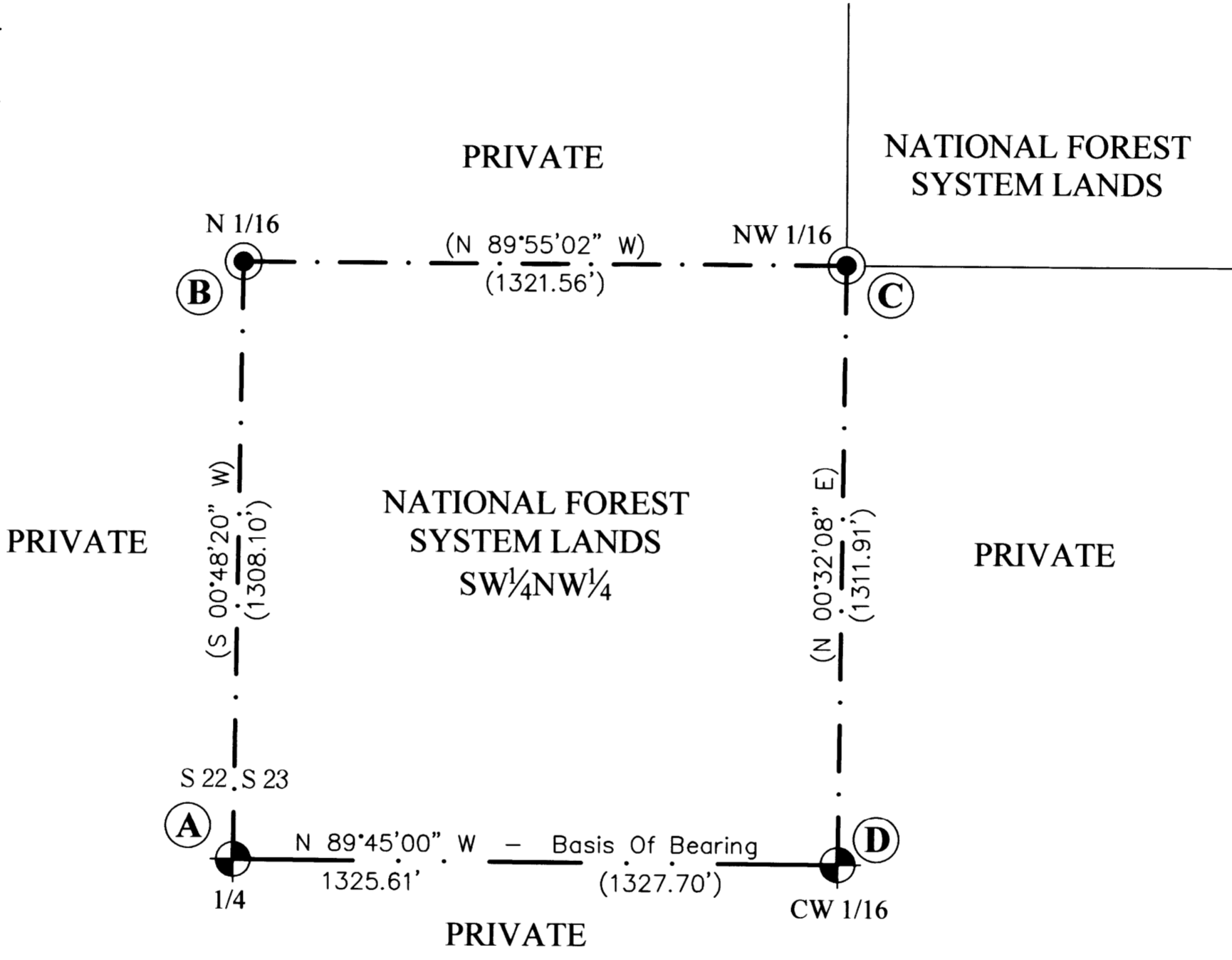
- A 16" Fir bears [S1°30'W 31.2 FT. Record](S4°W - 31.4FT), with Healed Single Blaze.
- A 19" Fir bears [S41°30'W 47.8 FT. Record](S33°W - 48.0FT), with Healed Single Blaze.
- A 3/4" Iron Rod bears Southwesterly 7.0 FT.

D: Center West 1/16 S23

Found a 2-1/2" Brass Cap on 2-1/2" Galvanized Iron Pipe, marked as shown, projecting 4 inches above mound of stone and earth. From which;



- A 16" Fir bears [S59°E 12.3 FT. Record](S50°E), with Healed Blaze.
- A 15" Fir bears [S45°W 10.0 FT. Record](S40°W), with Healed Blaze.
- A 3/4" Iron Rod bears Southeasterly 12.5 FT.



PURPOSE

The purpose of this survey was to mark and maintain a portion of the boundary between National Forest System Lands and adjacent private ownership lands in the Umpqua National Forest. Also to maintain property corners as needed. These lines were previously marked as stated in CSF#M79-44 & CSF#M70-25.

PROCEDURES

The survey was performed with Leica 1203+ total station. An open true line traverse was run between corners A & D for posting purposes. Traverse distance closed on Trimble R8 RTK-GPS obtained on both ends of traverse. The boundary line was previously posted with 6 ft. carsonite posts and property boundary signs on lines B-C, C-D, & D-A. Line A-B was previously posted with 6 ft. steel posts and property boundary signs. Where the line was maintained/posted, aluminum posts were added. Trees near the boundary true line were blazed, and brush was cleared from line per US Forest Service Standards.

Basis of bearing for this survey is CSF# M79-44, or N89°45'00"W, between corners A & D. All distance measurements are U.S. Survey Foot and all BT diameters are at breast height. Bearings and distances to measured BT's are to nearest 1/4° and 0.1 ft. All monument sizes are measured outside diameter in inches.

All computations and field notes are on file at the Willamette National Forest Supervisors Office, Springfield, OR.

HISTORY

- 1913 - Morris Wygant, Compassman for Zachariah M. Derrick, for GLO under contract no. 779, original and resurvey of subdivisional lines in T27S R2W. Set cedar post and 2 bearing trees at quarter corner Section 22&23.
- 1954 - Thomas E. Shrum Jr., for US Plywood Corp, set 1.5" Iron Pipe at quarter corner Section 22&23 from original evidence.
- 1962 - Thomas E. Shrum Jr., for US Plywood Corp, reset Iron Pipe with 2.5" Aluminum Cap, marked new trees.
- 1968 - V. Tracy, F. Johnes & V. Perron, for Douglas County Surveyors Office, found the quarter corner to Sections 22&23 in good condition, marked new bearing trees.
- 1978 - Romanso E. Ware, LS 1005, in CSF# M70-25, Subdivided Section 22, tied to quarter corner reset heron.
- 1980 - Romanso E. Ware, LS 1005, and Ronald A. Quimby, LS 1656, in CSF# M79-44, subdivided Section 23, setting corners B, C, & D. Tied to the quarter corner of Sections 22&23.
- 1992 - K. DeGroot, LS 1941, Douglas County Restoration File no. 63/138, visited corners B, C, & D with revised measurements to BT's used in this survey. Only recorded Corner 'C' in visitation with county.
- April 2011 - J. Ransom, LS 2561, remonumented the 1/4 corner in C.S. 65/72-18

LEGEND:

- Found/Measured Monument (circle with crosshair)
- Found/Maintained Monument (circle with dot)
- Interior Section Line (solid line)
- Measured/Maintained Property Boundary (dashed line)
- Maintained Property Boundary (dotted line)
- Record Per (CSF#M79-44) (circle with horizontal line)

I, John C. Ransom, a Registered Land Surveyor in the State of Oregon, hereby certify that this plat and the notes hereon are a true and correct representation of a survey I performed in December 2010, at the request of the USDA Forest Service, in accordance with the statutes of the State of Oregon and the BLM Manual of Surveying Instructions, 2009.

John Ransom
John C. Ransom, PLS
3106 Pierce Parkway
Suite D
Springfield, OR 97477

REGISTERED
PROFESSIONAL
LAND SURVEYOR

John Ransom
OREGON
PLS 21, 1992
JOHN C. RANSOM
2561
Expires: 12/31/2012

REVIEWED BY
Mine Schwartz 6-20-2011
SIGNATURE DATE
I CERTIFY THAT THIS SURVEY WAS PERFORMED AT THE
REQUEST OF THE
UMPQUA NATIONAL FOREST SUPERVISOR
Steve Johnson 7/14/2011
SIGNATURE DATE

PLOTTER: HP DESIGNJET 500
INK: BLACK C4844A
MEDIA: CONTINENTAL MILANO JPC-4M1
TAX LOT MAP NO.: 27-2-00-3100