

# A SURVEY FOR NATHAN ALLER

LOCATED IN SECTION 12, TOWNSHIP 30 SOUTH, RANGE 6 WEST, WILLAMETTE MERIDIAN,  
DOUGLAS COUNTY, OREGON

FILED  
Date: 7-5-2011 By: JC  
This survey consists of:  
Map: M1162-47  
Narrative: \_\_\_\_\_  
Corner Rpt: \_\_\_\_\_

DOUGLAS COUNTY  
SURVEYOR

**NARRATIVE:**

THE PURPOSE OF THIS SURVEY IS MONUMENTATION AND LINE MARKING OF A PORTION OF THE N-S CENTERLINE OF SECTION 12 AND ALSO OF LINES RUNNING EAST AND WEST FROM THE NORTHWEST CORNER OF DLC #37 AS SHOWN.

THE NORTH ONE-QUARTER CORNER ESTABLISHED BY BLM IN 1990 WAS FOUND. THIS CORNER WAS USED TOGETHER WITH THE PROPORTIONED POSITION OF THE SOUTH 1/4 CORNER TO ESTABLISH THE NORTH-SOUTH CENTERLINE OF THE SECTION.

THE NW CORNER OF DLC #37 WAS ALSO FOUND AND FIELD LOCATED. LINES PROJECTING EAST AND WEST FROM THIS CORNER WERE ACCEPTED AS PREVIOUSLY MONUMENTED BY SURVEY M22-65. THE LINE TO THE WEST WAS EXTENDED UNTIL IT INTERSECTED THE N-S CENTERLINE OF SECTION 12. THIS INTERSECTION WAS MONUMENTED AS A COMMON PROPERTY CORNER FOR NATHAN ALLER & SILVER BUTTE TIMBER COMPANY.

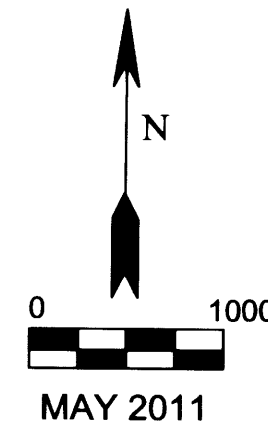
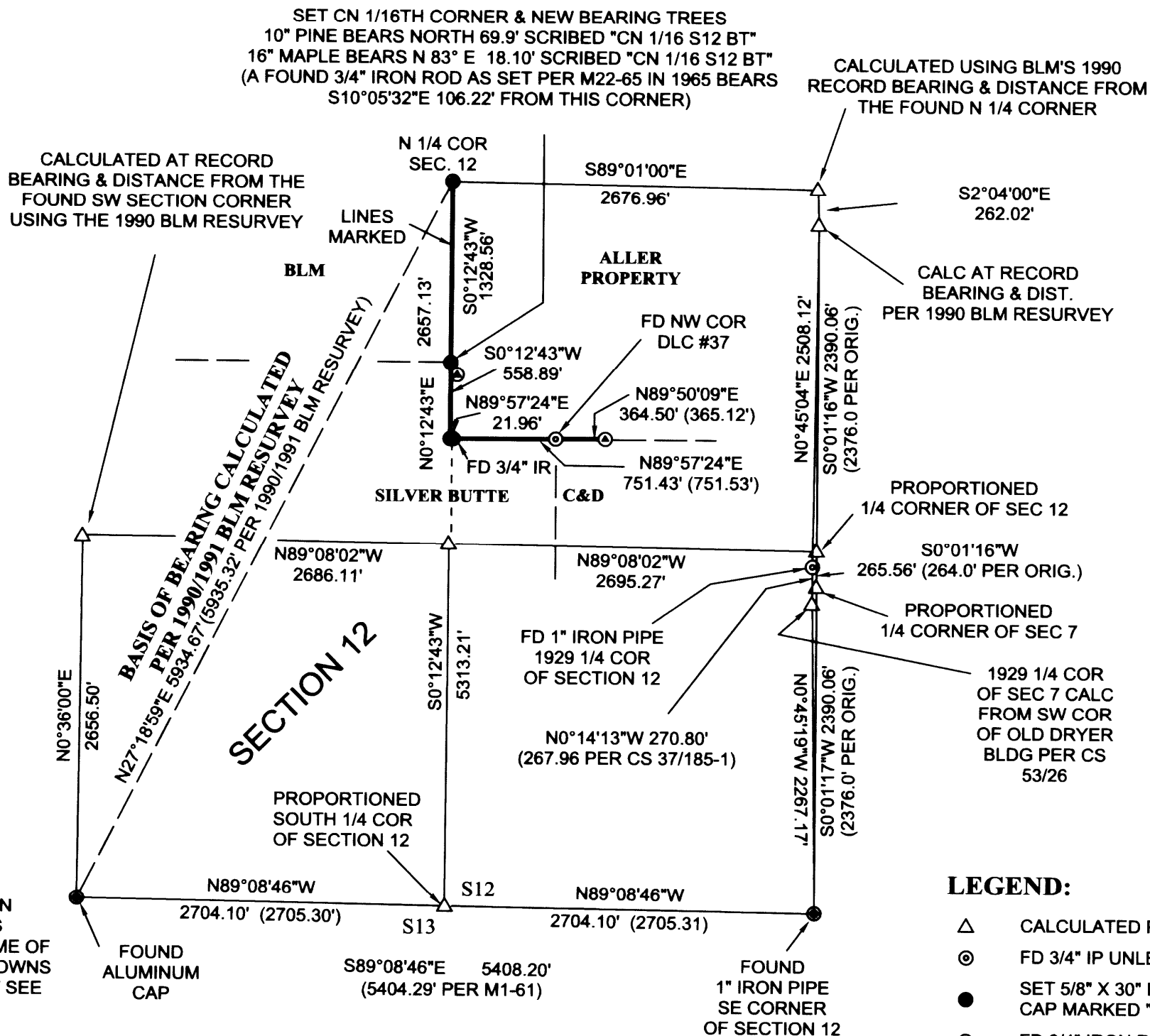
THE CENTER 1/4 CORNER WAS CALCULATED BY CENTERLINE INTERSECTION USING FOUND MONUMENTS AND COMPUTED CORNERS AS SHOWN. THE CN 1/16TH CORNER OF SECTION 12 WAS THEN MONUMENTED MIDWAY BETWEEN THE FOUND NORTH 1/4 CORNER AND SAID CALCULATED CENTER 1/4 CORNER.

NOTE: THE 1965 LOCATION OF THE CN 1/16TH CORNER WAS BASED ON THE NORTH 1/4 CORNER POSITION NOT ACCEPTED BY BLM IN 1990; THE 1965 LOCATION OF THE CN 1/16TH CORNER WAS ALSO BASED ON A 1929 POSITION FOR THE EAST 1/4 CORNER WHICH DOES NOT REASONABLY MATCH THE ACTUAL PROPORTIONED POSITION.

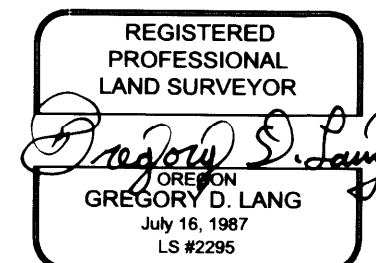
FOR THE PURPOSES OF THIS SURVEY, I USED BLM'S 1990 N1/4 CORNER POSITION AND THE ACTUAL PROPORTIONED POSITION FOR THE EAST 1/4 CORNER OF SECTION 12 TO CONTROL THE CENTER OF THE SECTION AND FOR SETTING THE CN 1/16TH CORNER.

BUT PLEASE NOTE THAT SECTION 12 WAS PREVIOUSLY SUBDIVIDED IN 1929 AND THEN AGAIN IN 1965. IN 1965, SEVERAL INTERIOR CORNERS WERE ALSO SET. (SEE SURVEYS M1-61 & M22-65). EVEN THOUGH SOME OF THE CONTROLLING CORNERS USED FOR THESE SECTIONAL BREAKDOWNS HAVE NOT PROVED OUT WELL FOR POSITION, SOME OWNERS MIGHT SEE LONGSTANDING LINES AND CORNERS AS CONTROLLING THE ACTUAL OWNERSHIP LINES.

FIELD CREW: G.LANG, T.LANG  
EQUIPMENT: NIKON DTM 420  
CALCULATIONS: G. LANG



**SURVEYED BY:**  
GREGORY D. LANG  
7550 WILLIS CR. RD.  
WINSTON, OR 97496



EXPIRES: 12-31-2012

**LEGEND:**

- △ CALCULATED POINT
- ⊙ FD 3/4" IP UNLESS OTHERWISE NOTED
- SET 5/8" X 30" IRON ROD WITH PLASTIC CAP MARKED "LANG SURVEYING"
- ⊙ FD 3/4" IRON ROD
- FOUND BRASS CAP UNLESS OTHERWISE NOTED
- ( ) RECORD PER M22-65 UNLESS OTHERWISE NOTED