

PROPERTY SURVEY

**SECTION 10, T 30 S, R 2 W, W.M.
DOUGLAS COUNTY, OREGON
APRIL 2011**

**SURVEY BY:
HOSTETTER LAND SURVEYING
63538 PINTAIL DRIVE
COOS BAY, OREGON 97420**

SURVEY FOR:

SENECA JONES TIMBER COMPANY
P O BOX 2129
ROSEBURG, OREGON 9740

ROSEBURG RESOURCES COMPANY
P O BOX 1088
ROSEBURG, OREGON 97470

FOUND: 3/4" IRON PIPE BY
MARKHAM (42/421).
FROM WHICH:
9" FIR SNAG, SCRIBING VISIBLE,
N33°E, 21.7 FEET (MARKHAM BT).
9" FIR SNAG, SCRIBING VISIBLE,
N59°E, 27.0 FEET (MARKHAM BT).
NEW BTS:
10" CEDAR, SCRIBED "S10 1/4 BT",
S37°E, 10.5 FEET TO SPIKE.
14" MADRONE, SCRIBED "S9 1/4 BT"
N50°W, 10.3 FEET TO SPIKE.

FOUND: 1974 BRASS CAP AND
BEARING TREES AS DESCRIBED BY
DOUGLAS COUNTY SURVEYORS
OFFICE (57/12).

LEGEND

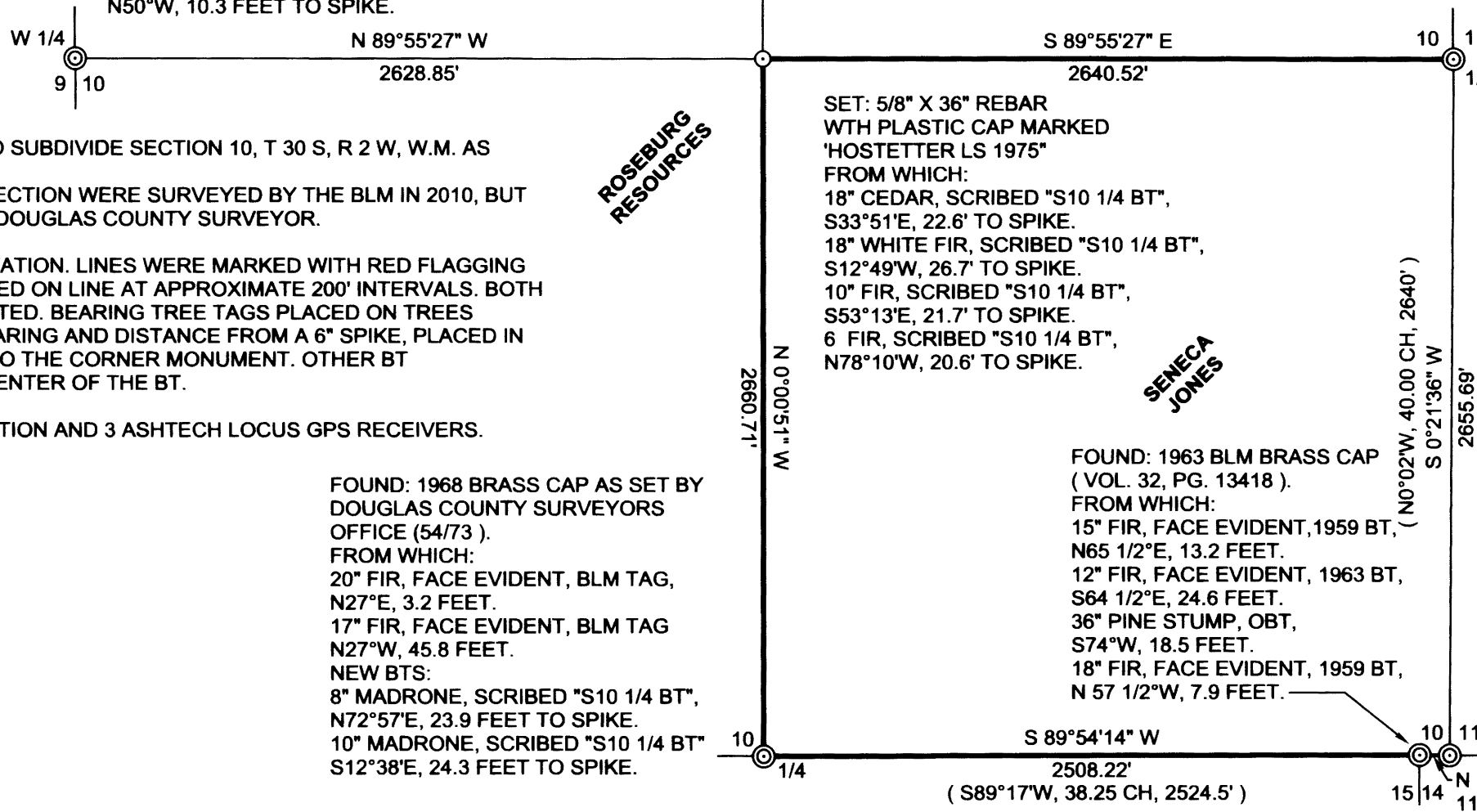
- CORNER SET
- ⊙ CORNER FOUND
- LINE MARKED
- (N0°02'W, 40.00 CH, 2640') GLO RECORD
- [S89°36'E, 1.74 CH, 114.84'] 1963 BLM

FILED
Date: 5-5-2011 By: HLW
This survey consists of:
Map: M 162-29
Narrative: _____
Corner Rpt: _____

DOUGLAS COUNTY
SURVEYOR



BASIS OF BEARING: GPS OBSERVATION



NARRATIVE:
THE PURPOSE OF THIS SURVEY WAS TO SUBDIVIDE SECTION 10, T 30 S, R 2 W, W.M. AS SHOWN
THE EAST AND NORTH LINES OF THIS SECTION WERE SURVEYED BY THE BLM IN 2010, BUT HAVE NOT BEEN RECORDED WITH THE DOUGLAS COUNTY SURVEYOR.

BEARINGS ARE BASED ON GPS OBSERVATION. LINES WERE MARKED WITH RED FLAGGING AND 6' GALVANIZED POSTS WERE PLACED ON LINE AT APPROXIMATE 200' INTERVALS. BOTH SIDES OF LINE WERE BLAZED AND PAINTED. BEARING TREE TAGS PLACED ON TREES MARKED BY THIS SURVEY, LIST THE BEARING AND DISTANCE FROM A 6" SPIKE, PLACED IN THE ROOT COLLAR BELOW THE FACE, TO THE CORNER MONUMENT. OTHER BT MEASUREMENTS LISTED ARE TO THE CENTER OF THE BT.

EQUIPMENT: NIKON NIVO 5C TOTAL STATION AND 3 ASHTECH LOCUS GPS RECEIVERS.

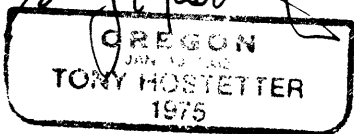
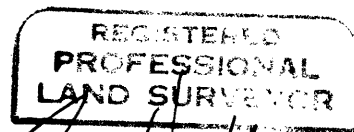
FOUND: 2010 BLM BRASS CAP
NOT YET RECORDED
FROM WHICH:
11" FIR, SCRIBING VISIBLE, 2010 BLM BT,
S89°E, 32.7 FEET.
19" CEDAR, FACE EVIDENT, 1960 BT,
S75°E, 25.7 FEET.
24" WHITE FIR, FACE EVIDENT, 1960 BT,
S 18°W, 34.0 FEET.
17" CEDAR SNAG, FACE EVIDENT, 1960 BT,
N11°W, 41.0 FEET.

SET: 5/8" X 36" REBAR
WTH PLASTIC CAP MARKED
'HOSTETTER LS 1975'
FROM WHICH:
18" CEDAR, SCRIBED "S10 1/4 BT",
S33°51'E, 22.6' TO SPIKE.
18" WHITE FIR, SCRIBED "S10 1/4 BT",
S12°49'W, 26.7' TO SPIKE.
10" FIR, SCRIBED "S10 1/4 BT",
S53°13'E, 21.7' TO SPIKE.
6" FIR, SCRIBED "S10 1/4 BT",
N78°10'W, 20.6' TO SPIKE.

FOUND: 1968 BRASS CAP AS SET BY
DOUGLAS COUNTY SURVEYORS
OFFICE (54/73).
FROM WHICH:
20" FIR, FACE EVIDENT, BLM TAG,
N27°E, 3.2 FEET.
17" FIR, FACE EVIDENT, BLM TAG
N27°W, 45.8 FEET.
NEW BTS:
8" MADRONE, SCRIBED "S10 1/4 BT",
N72°57'E, 23.9 FEET TO SPIKE.
10" MADRONE, SCRIBED "S10 1/4 BT"
S12°38'E, 24.3 FEET TO SPIKE.

FOUND: 1963 BLM BRASS CAP
(VOL. 32, PG. 13418).
FROM WHICH:
15" FIR, FACE EVIDENT, 1959 BT,
N65 1/2°E, 13.2 FEET.
12" FIR, FACE EVIDENT, 1963 BT,
S64 1/2°E, 24.6 FEET.
36" PINE STUMP, OBT,
S74°W, 18.5 FEET.
18" FIR, FACE EVIDENT, 1959 BT,
N 57 1/2°W, 7.9 FEET.

FOUND: 1963 BLM BRASS CAP
(VOL. 32, PG. 13418).
FROM WHICH:
15" FIR, FACE EVIDENT, 1959 BT,
N29 1/4°E, 12.5 FEET.
10" FIR SNAG, FACE EVIDENT, 1959 BT,
S55°E, 25.1 FEET.
15" MADRONE, BLM TAG, 1963 BT,
N45°W, 19.8 FEET.
28" FIR, FACE EVIDENT, OBT,
N 14 1/2°W, 50.2 FEET.



EXPIRES: 6/30/11