

RECORD OF SURVEY

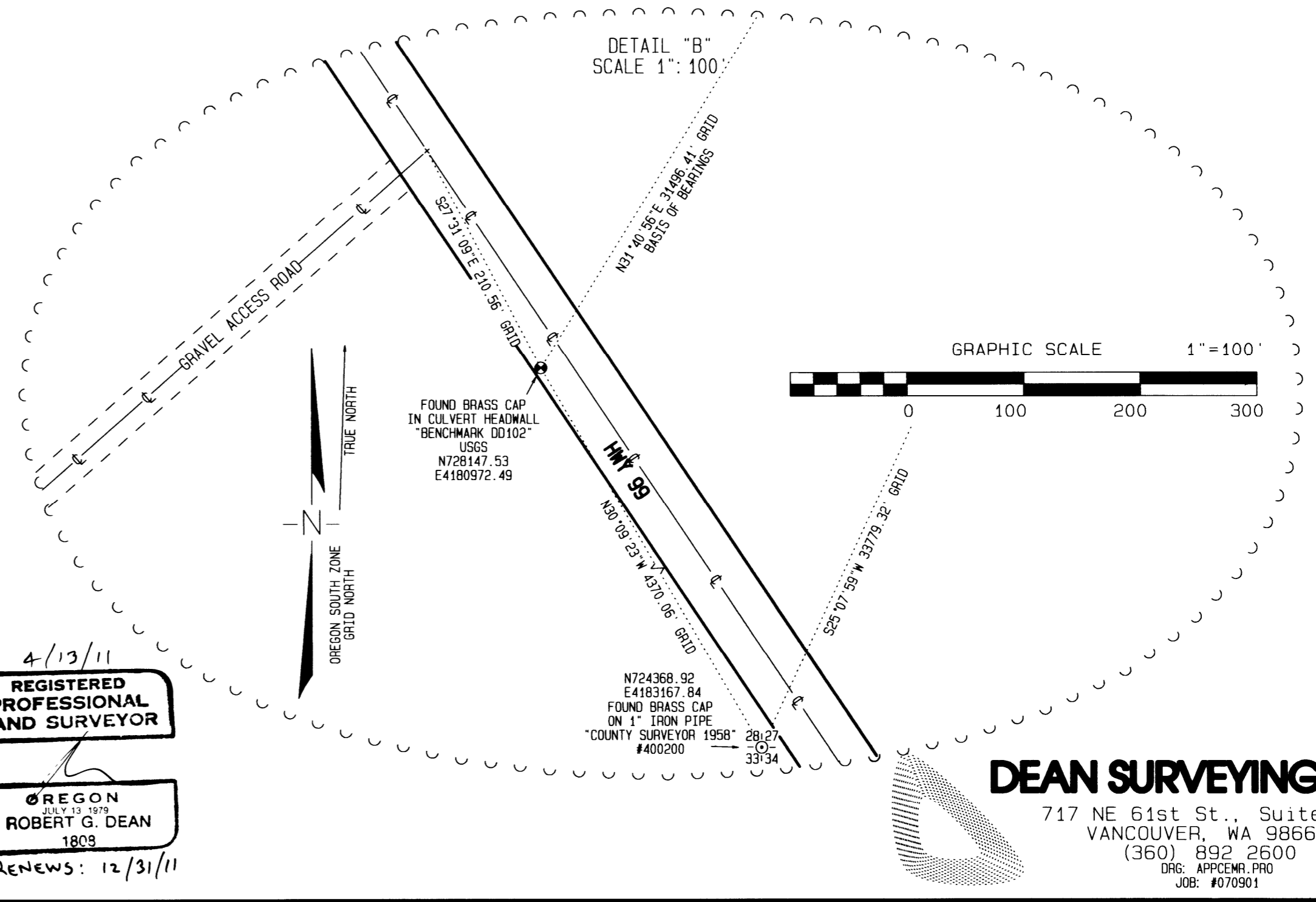
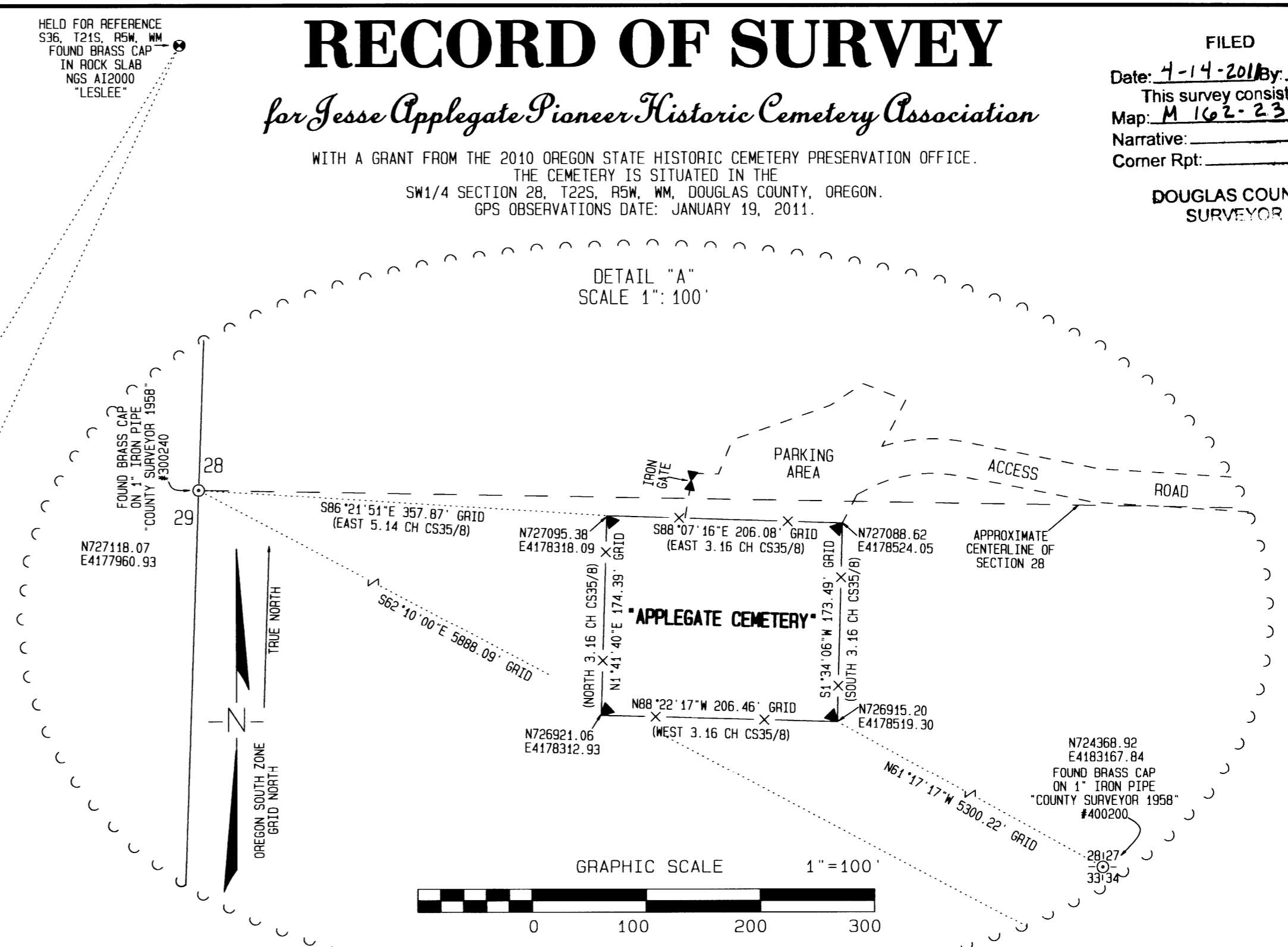
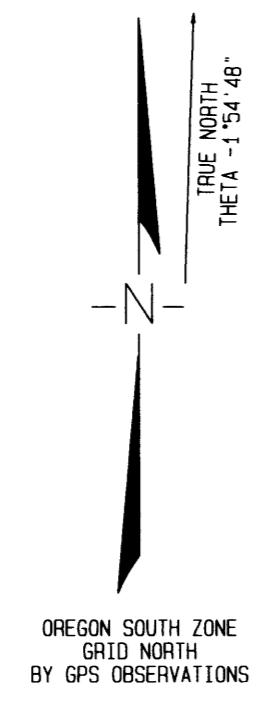
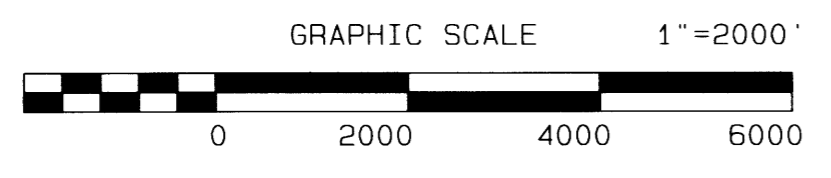
for Jesse Applegate Pioneer Historic Cemetery Association

FILED
 Date: 4-14-2011 By: JC
 This survey consists of:
 Map: M 162-23
 Narrative:
 Corner Rpt:
 DOUGLAS COUNTY SURVEYOR

WITH A GRANT FROM THE 2010 OREGON STATE HISTORIC CEMETERY PRESERVATION OFFICE.
 THE CEMETERY IS SITUATED IN THE
 SW1/4 SECTION 28, T22S, R5W, WM, DOUGLAS COUNTY, OREGON.
 GPS OBSERVATIONS DATE: JANUARY 19, 2011.

STATE PLANE COORDINATE SYSTEM OREGON SOUTH ZONE, HORIZONTAL & VERTICAL NAD 83(2007), INTERNATIONAL FEET

LATITUDE	LONGITUDE	NORTH	EAST	ELLIPSOID HEIGHT	CONVERGENCE	GRID FACTOR	COMBINED FACTOR	NAME
43°42'20.4476"	123°14'15.1549"	754950.15	4197514.66	300.09	-1°52'22"	0.999938515	0.99992417	LESLEE
43°37'50.4745"	123°17'48.0586"	728147.53	4180972.49	259.40	-1°54'48"	0.999927095	0.999918301	DD102



LEGEND

- ▲ APEX OF ANGLE IRON FENCE CORNER POST IN CONCRETE
- ⊙ FOUND DOUGLAS COUNTY SURVEYOR'S OFFICE BRASS CAP
- ⊕ FOUND BRASS DISC IN CONCRETE HEADWALL OR ROCK SLAB
- + CALCULATED LOCATION, NOT MARKED
- () RECORD DATA AS SHOWN
- CONTRACTED LINE; LENGTH NOT TO SCALE
- - - LIMIT OF EASEMENT
- SITE PERIMETER
- CENTERLINE AS TRAVELED
- PUBLIC RIGHT OF WAY LINE
- DIMENSIONED LINE
- DIMENSIONING LINE
- PROJECTED 1/4 SECTION LINES
- VERY OLD (ABOUT 80 YEARS)
- X ANGLE IRON & HOGWIRE FENCE

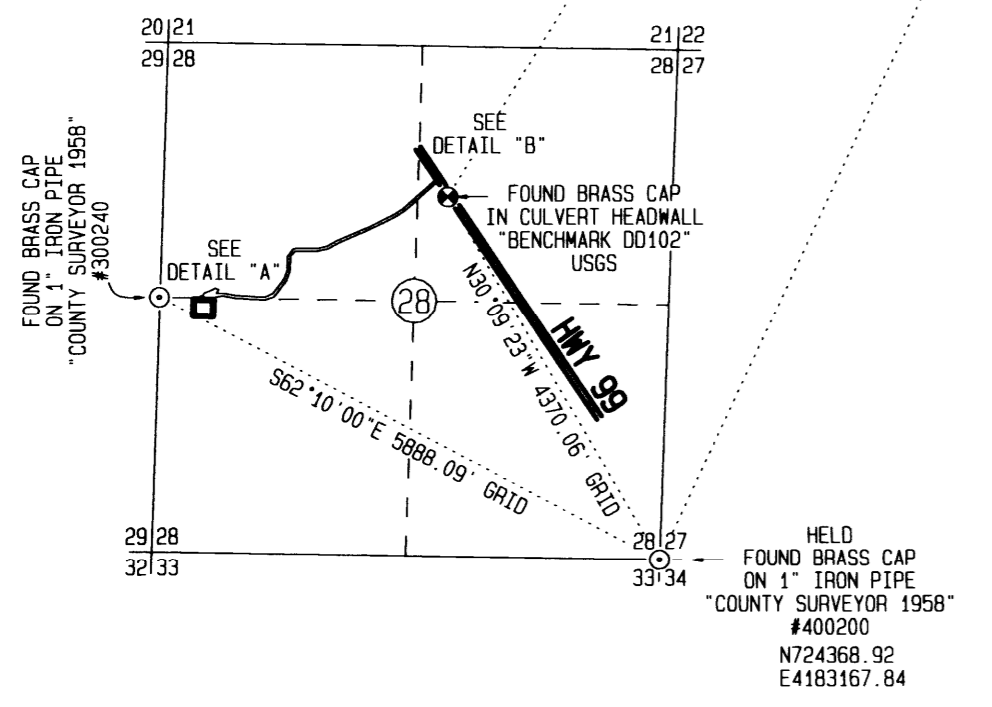
SURVEY NARRATIVE

THE PURPOSE OF THIS SURVEY IS TO MAP AND DESCRIBE THE EXISTING HISTORIC "APPLEGATE CEMETERY" AND ITS ACCESS ROAD AND PARKING LOT AREA. THE SURVEY IS PARTLY FUNDED BY OREGON PARKS AND RECREATION DEPARTMENT, HERITAGE PROGRAMS, 2010 HISTORIC CEMETERY GRANT (CG-10-10).

THIS SURVEY USED A TOPCON 3" TOTAL STATION AND THREE SOKKIA L1 STRATUS GPS RECEIVERS TO ACHIEVE POSITIONAL PRECISIONS THAT MEET OR EXCEED THE REQUIREMENTS OF THE ALTA/ACSM 2005 STANDARDS AND OF ORS 209.250 (6) (K).

THE GPS CONTROL SURVEY REFERENCES NGS AT2000 "LESLEE" HAVING A NETWORK ACCURACY ESTIMATED 95% ELLIPSE OF 1.35CM. THE TRIANGLE WAS OBSERVED WITH A COMMON OCCUPATION TIME OF 2.5 HOURS AND ADJUSTED TO YIELD A 95% ELLIPSE OF 0.2CM.

THE CEMETERY AND ROADS WERE CONNECTED TO THE GPS NETWORK WITH CLOSED LOOP TRAVERSES USING A TOTAL STATION (4 REPETITIONS, COMPASS RULE ADJUSTMENT) WITH PRECISIONS EXCEEDING 1:78,000 (0.07 FEET TOTAL MISCLOSE).



4/13/11
REGISTERED PROFESSIONAL LAND SURVEYOR
 OREGON JULY 13 1979
ROBERT G. DEAN
 1809
 RENEWS: 12/31/11

DEAN SURVEYING, Inc.
 717 NE 61st St., Suite 100
 VANCOUVER, WA 98665
 (360) 892 2600
 DRG: APPCENR.PRO
 JOB: #070901

MAP FILE M/162-23

MAP FILE M/162-23