

# CORNER RENEWAL MAP: SURVEY FOR: LONE ROCK TIMBERLAND COMPANY

SECTION 18 TOWNSHIP 25 SOUTH, RANGE 3 WEST, W.M.

SURVEYED: BY LONE ROCK TIMBER MANAGEMENT CO.

PO BOX 1127 ROSEBURG, OREGON 97470 SURVEY: MT SCOTT #3

DOUGLAS COUNTY, OREGON

DATE: MARCH 2011

FILED

Date: 4-6-2011 By: JC

This survey consists of:

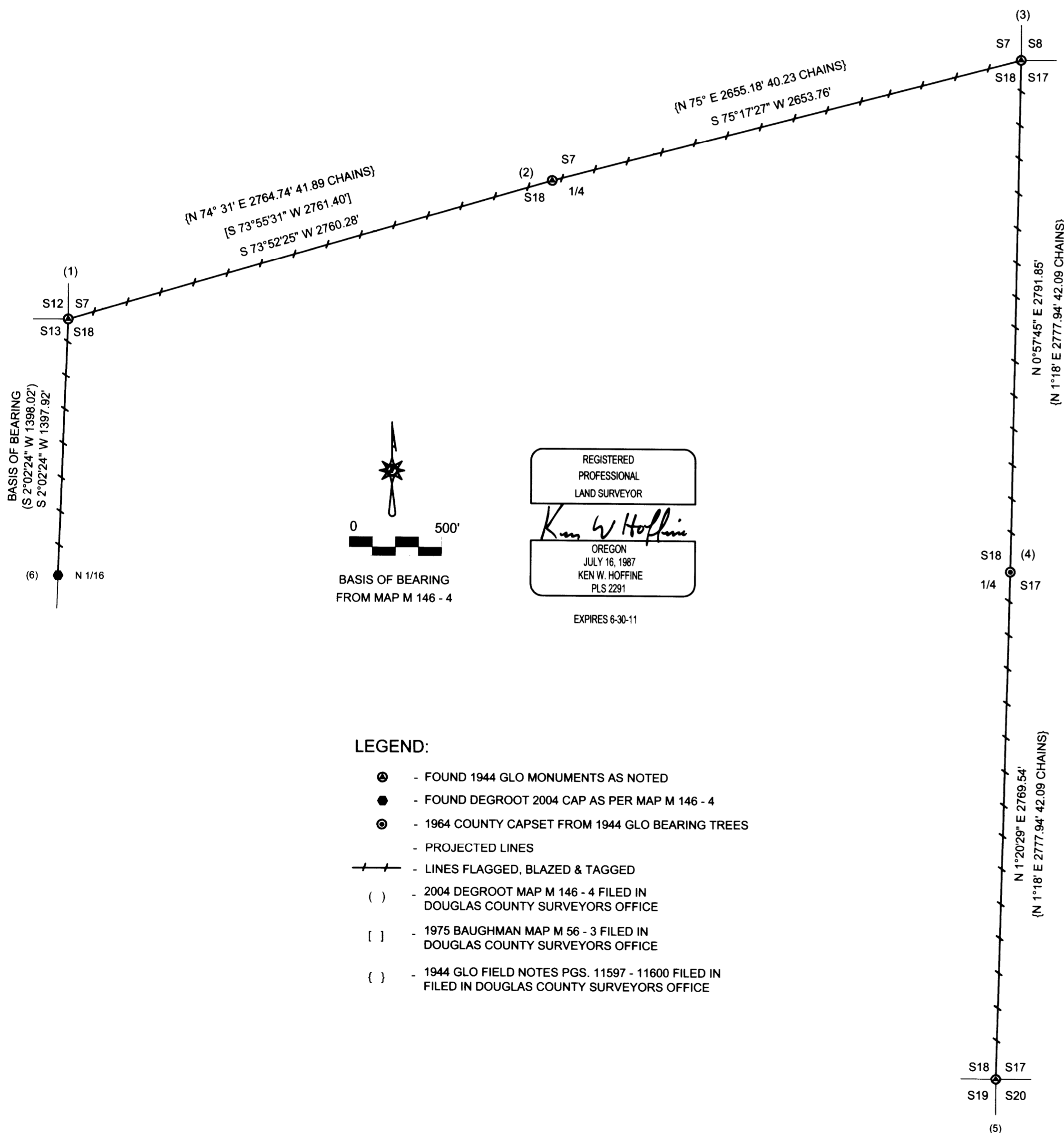
Map: M162-21

Narrative:

Corner Rpt:

DOUGLAS COUNTY  
SURVEYOR

MAP FILE M162-21



### NARRATIVE:

THE PURPOSE OF THIS SURVEY WAS TO MARK PROPERTY LINES BETWEEN FOUND GLO MONUMENTS ON THE EXTERIOR OF SECTION 18 FOR TIMBER MANAGEMENT PURPOSES. WE INITIATED THIS SURVEY AT THE NORTHWEST CORNER OF SECTION 18, A GLO BRASS CAP SET FROM ORIGINAL EVIDENCE. WE THEN RAN A CLOSED LOOP RANDOM SURVEY ALONG THE SECTION LINES SHOWN EASTERLY AND SOUTHERLY TYING IN THE NORTH QUARTER, NORTHEAST, EAST QUARTER AND SOUTHEAST CORNERS OF SECTION 18 WHICH ARE GLO MONUMENTS SET BY PROPORTIONAL MEASUREMENT IN 1944. THE EAST QUARTER MONUMENT WAS LOST AND THEN REESTABLISHED IN 1964 BY DOUGLAS COUNTY SURVEYORS OFFICE FROM BEARING TREES MARKED BY GLO IN 1944. WE THEN CONTINUED OUR RANDOM TRAVERSE NORTHWESTERLY ALONG AN EXISTING ROADWAY TO TIE IN THE NORTH SIXTEENTH CORNER BETWEEN SECTIONS 13 AND 18 SET BY B.T.S. DEGROOT IN 2004 AND THEN CLOSED OUR SURVEY BACK AT THE INITIAL POINT. WE MARKED THE SECTION LINES AS SHOWN BETWEEN THE MONUMENTS BY FLAGGING, BLAZING TREES, PAINTING BLAZES AND INSTALLING ALUMINUM TAGS. THIS SURVEY WAS DONE WITH A NIKON DTM 522 TOTAL STATION WITH GARY ANGIOLET, IGNACIO ROMAN, DAVE RING, JR. AND DAN SAILY ASSISTING ME.

### CORNER INFORMATION:

- 1) THE NORTHWEST SECTION CORNER OF SECTION 18  
FOUND 1944 GLO CAP  
-- 20" DOUGLAS FIR BEARS S 25 1/2° E 17.0 FEET (RECORD UNKNOWN)  
-- 49" DOUGLAS FIR BEARS N 18 3/4° W 21.7 FEET (RECORD N 18 3/4° W 21.12 FEET) HEALED FACE AND TAG.  
-- 28" DOUGLAS FIR BEARS N 24 1/2° E 31.0 FEET (RECORD N 25° E 31.68 FEET) HEALED FACE AND TAG.  
-- 42" DOUGLAS FIR BEARS N 50 3/4° E 17.2 FEET (RECORD N 52° E 16.50 FEET) OPEN FACE AND TAG.  
CORNER LIES ON SOUTHWEST SLOPE APPROX. 75 FEET NORTH OF CREEK. 10 YEAR OLD CLEARCUT TO NORTHWEST, NOT REPLANTED
- 2) THE QUARTER CORNER BETWEEN SECTIONS 7 AND 18  
FOUND 1944 GLO CAP 18" ABOVE GROUND AND LEANING SLIGHTLY IN A WESTERLY DIRECTION.  
-- 18" DOUGLAS FIR BEARS N 79 1/2° W 35.6 FEET (RECORD N 80° W 35.7 FEET) HEALED FACE AND TAG.  
-- 29" DOUGLAS FIR BEARS S 58° E 20.3 FEET (RECORD S 60° E 21.0 FEET) HEALED FACE AND TAG.  
CORNER LIES ON WEST FACING SLOPE APPROX. 110 FEET NORTHEAST ALONG SECTION LINE FROM AN OLD SKID ROAD.
- 3) THE NORTHEAST SECTION CORNER OF SECTION 18  
FOUND 1944 GLO GAP  
-- 13" DOUGLAS FIR BEARS S 70 1/4° W 29.4 FEET (RECORD S 71 1/2° W 29.6 FEET) HEALED FACE AND TAG.  
-- 41" DOUGLAS FIR BEARS S 43 1/2° E 58.4 FEET (RECORD S 42° E 57.4 FEET) HEALED FACE AND TAG.  
-- 28" DOUGLAS FIR BEARS N 77 1/2° E 12.3 FEET (RECORD N 78° E 12.7 FEET) HEALED FACE AND TAG.  
-- 11" MADRONE BEARS N 56 3/4° W 26.8 FEET (RECORD N 56° W 26.6 FEET) HEALED FACE AND TAG.  
CORNER LIES ON TOP OF ROCKY RIDGETOP.
- 4) THE QUARTER CORNER BETWEEN SECTIONS 17 AND 18  
FOUND 1964 COUNTY SURVEYORS OFFICE CAP 0.5 ABOVE GROUND SET FROM 1944 GLO BEARING TREES  
-- 34" DOUGLAS FIR STUMP BEARS S 17° E 22.4 FEET AS PER RECORD HEALED FACE AND TAG.  
-- 34" DOUGLAS FIR BEARS N 7 1/2° W 29.7 FEET AS PER RECORD HEALED FACE AND TAG.  
CORNER LIES ON NORTHWEST FACING SLOPE APPROX. 150 FEET FROM RIDGETOP.
- 5) THE SOUTHEAST SECTION CORNER OF SECTION 18  
FOUND 1944 GLO CAP  
-- 25" CEDAR BEARS N 7° E 149.6 FEET (RECORD N 8 1/2° E 150.5 FEET) HEALED FACE AND TAG.  
-- 15" MAPLE BEARS N 73 1/2° E 15.7 FEET (RECORD N 73 1/2° E 16.0 FEET) HEALED FACE AND TAG.  
-- 23" DOUGLAS FIR BEARS S 69 3/4° E 41.7 FEET (RECORD S 70 1/2° E 41.7 FEET) HEALED FACE AND TAG.  
-- 18" DOUGLAS FIR BEARS S 4 1/4° W 56.6 FEET (RECORD S 4 1/2° W 56.6 FEET) HEALED FACE AND TAG.  
CORNER LIES APPROX. 10 FEET NORTH OF OLD ROAD GRADE AND APPROX. 50 FEET SOUTH OF CREEK.
- 6) THE NORTH 1/16 CORNER BETWEEN SECTIONS 13 AND 18  
FOUND DEGROOT ALUMINUM CAP AS PER MAP M 146 - 4, 0.4 FEET ABOVE GROUND  
-- 16" DOUGLAS FIR BEARS N 29° W 29.2 FEET AS PER RECORD HEALED FACE AND TAG.  
-- 10" DOUGLAS FIR BEARS N 70 1/2° E 15.5 FEET AS PER RECORD HEALED FACE AND TAG.  
CORNER LIES ON NORTHEAST SLOPE AT SOUTH EDGE OF RECENTLY CUT UNIT.

### LEGEND:

- - FOUND 1944 GLO MONUMENTS AS NOTED
- - FOUND DEGROOT 2004 CAP AS PER MAP M 146 - 4
- - 1964 COUNTY CAPSET FROM 1944 GLO BEARING TREES
- - - PROJECTED LINES
- / - LINES FLAGGED, BLAZED & TAGGED
- ( ) - 2004 DEGROOT MAP M 146 - 4 FILED IN DOUGLAS COUNTY SURVEYORS OFFICE
- [ ] - 1975 BAUGHMAN MAP M 56 - 3 FILED IN DOUGLAS COUNTY SURVEYORS OFFICE
- { } - 1944 GLO FIELD NOTES PGS. 11597 - 11600 FILED IN DOUGLAS COUNTY SURVEYORS OFFICE

MAP FILE M162-21