

# MAP OF SURVEY

LOCATED in Section 24, T. 31 S., R. 4 W., W.M.  
in Douglas County, Oregon.

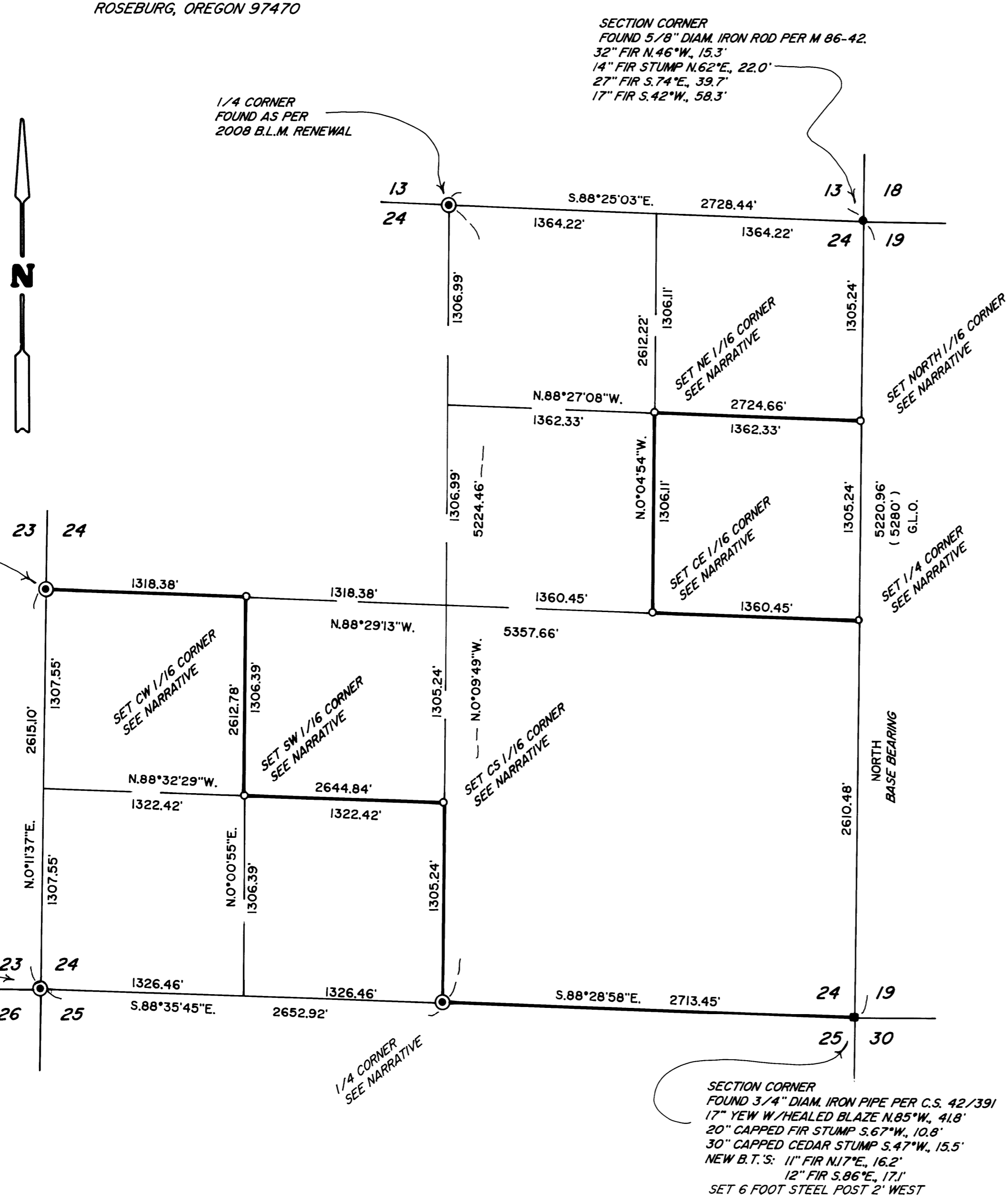
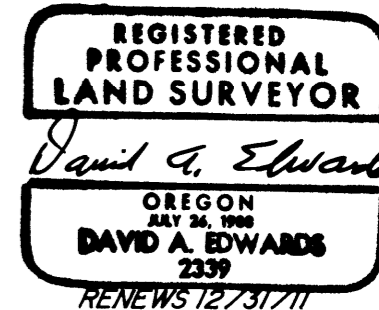
February 15, 2011

FILED  
Date: 3-16-2011 By: JC  
This survey consists of:  
Map: M 162-12  
Narrative: \_\_\_\_\_  
Corner Rpt: \_\_\_\_\_

DOUGLAS COUNTY  
SURVEYOR

SURVEYED FOR: ROSEBURG RESOURCES CO.  
P.O. BOX 1088  
ROSEBURG, OREGON 97470

SURVEYED BY: DAVID EDWARDS LAND SURVEYING  
P.O. BOX 361  
OAKLAND, OREGON 97462  
PHONE: (541) 459-0512



### LEGEND

- ⊙ INDICATES B.L.M. OR COUNTY SURVEYOR BRASS CAP FOUND UNLESS NOTED OTHERWISE.
- INDICATES 5/8" X 30" STEEL REBAR WITH 2 1/2" DIAM. ALUM. CAP MKD. AS PER B.L.M. MANUAL AND MARKED "ROSEBURG RESOURCES CO.", "LS 2339" AND "2011".
- ( ) DENOTES RECORD DATA AS NOTED.
- INDICATES BOUNDARY BLAZED AND POSTED THIS SURVEY.

SCALE: 1" = 600'

BASIS OF BEARINGS: G.L.O. RECORD NORTH ON EAST LINE OF SECTION 24.

### NARRATIVE

THE PURPOSE OF THIS SURVEY IS TO MARK THOSE BOUNDARIES SHOWN AS BOLD LINES HEREON. NO TRACE OF ORIGINAL EVIDENCE COULD BE FOUND FOR THE EAST 1/4 CORNER AND IT WAS THEREFORE SET BY PROPORTIONATE MEASURE. MONUMENTS SET BY MARKHAM IN 1958 (SEE FIELD NOTES IN C.S. FILE 42/391), ARE SIGNIFICANTLY OUT OF POSITION AND ARE THEREFORE DISREGARDED. THE LINES IN QUESTION WERE MARKED BY BLAZING TREES ON EACH SIDE OF LINE, BY SETTING 6 FOOT STEEL POSTS ALONG THE BOUNDARY AT INTERVALS OF 200 FEET OR LESS AND BY HANGING LIBERAL AMOUNTS OF RED FLAGGING ALONG THE TRUE LINE. BEARING TREES WERE SCRIBED ACCORDING TO THE B.L.M. MANUAL, MEASURED TO CENTER OF TREE AT ROOT CROWN AND ARE SITUATED AS FOLLOWS:

AT THE 1/4 CORNER COMMON TO SECTIONS 24 AND 19: AN 8" DIAM. CEDAR BEARS S.34°E., 17.6 FEET.  
AN 8" DIAM. MADRONE BEARS N.71°W., 14.1 FEET.  
A 6 FOOT STEEL POST IS SET 2' WEST.  
THE 5/8" DIAM. IRON ROD PER C.S. 42/391 BEARS S.17°52'32"E., 52.28'.

AT THE NORTH 1/16 COR. TO SECTIONS 24 AND 19: A 12" DIAM. HEMLOCK BEARS S.65°E., 29.4 FEET.  
A 19" DIAM. HEMLOCK BEARS S.15°W., 9.0 FEET.  
A 6 FOOT STEEL POST IS SET 2' WEST.

AT THE NE 1/16 CORNER OF SECTION 24: A 13" DIAM. FIR BEARS N.66°E., 8.9 FEET.  
A 9" DIAM. FIR BEARS S.44°E., 14.4 FEET.  
A 6 FOOT STEEL POST IS SET 2' SOUTH.

AT THE CE 1/16 CORNER OF SECTION 24: A 7" DIAM. FIR BEARS N.49°E., 12.0 FEET.  
AN 8" DIAM. FIR BEARS S.71°W., 8.25 FEET.  
A 6 FOOT STEEL POST IS SET 2' NORTH.

AT THE CW 1/16 CORNER OF SECTION 24: A 6" DIAM. FIR BEARS N.89°E., 5.1 FEET  
A 10" DIAM. FIR BEARS N.47°W., 3.6 FEET.  
A 6 FOOT STEEL POST IS SET 2' SOUTH.

AT THE SW 1/16 CORNER OF SECTION 24: A 14" DIAM. FIR BEARS S.68°W., 16.6 FEET.  
A 12" DIAM. FIR BEARS N.37°W., 5.0 FEET.  
A 6 FOOT STEEL POST IS SET 2' NORTH.

AT THE CS 1/16 CORNER OF SECTION 24: A 6" DIAM. FIR BEARS N.71°E., 44.0 FEET.  
A 14" DIAM. FIR BEARS S.18°W., 11.7 FEET.  
A 6 FOOT STEEL POST IS SET 2' NORTH.

AT THE 1/4 CORNER COMMON TO SECTIONS 24 AND 25:

FOUND 12" DIAM. FIR S.11°W., 6.1 FEET WITH NO MARKS VISIBLE.  
FOUND 53" DIAM. FIR SNAG WITH HEALED BLAZE N.51°E., 27.0 FEET.  
NEW BEARING TREES: A 6" DIAM. FIR BEARS N.12°E., 13.0 FEET.  
A 5" DIAM. MADRONE BEARS S.50°W., 16.1 FEET.  
A 6 FOOT STEEL POST IS SET 2' NORTH.

FIELD CREW: BRANT MILLER AND ERIC SPRINKLE.

EQUIPMENT: NIKON TOTAL STATION.

COMPUTATIONS AND DRAFTING: DAVID EDWARDS.

MAP FILE M162-12

MAP FILE M162-12