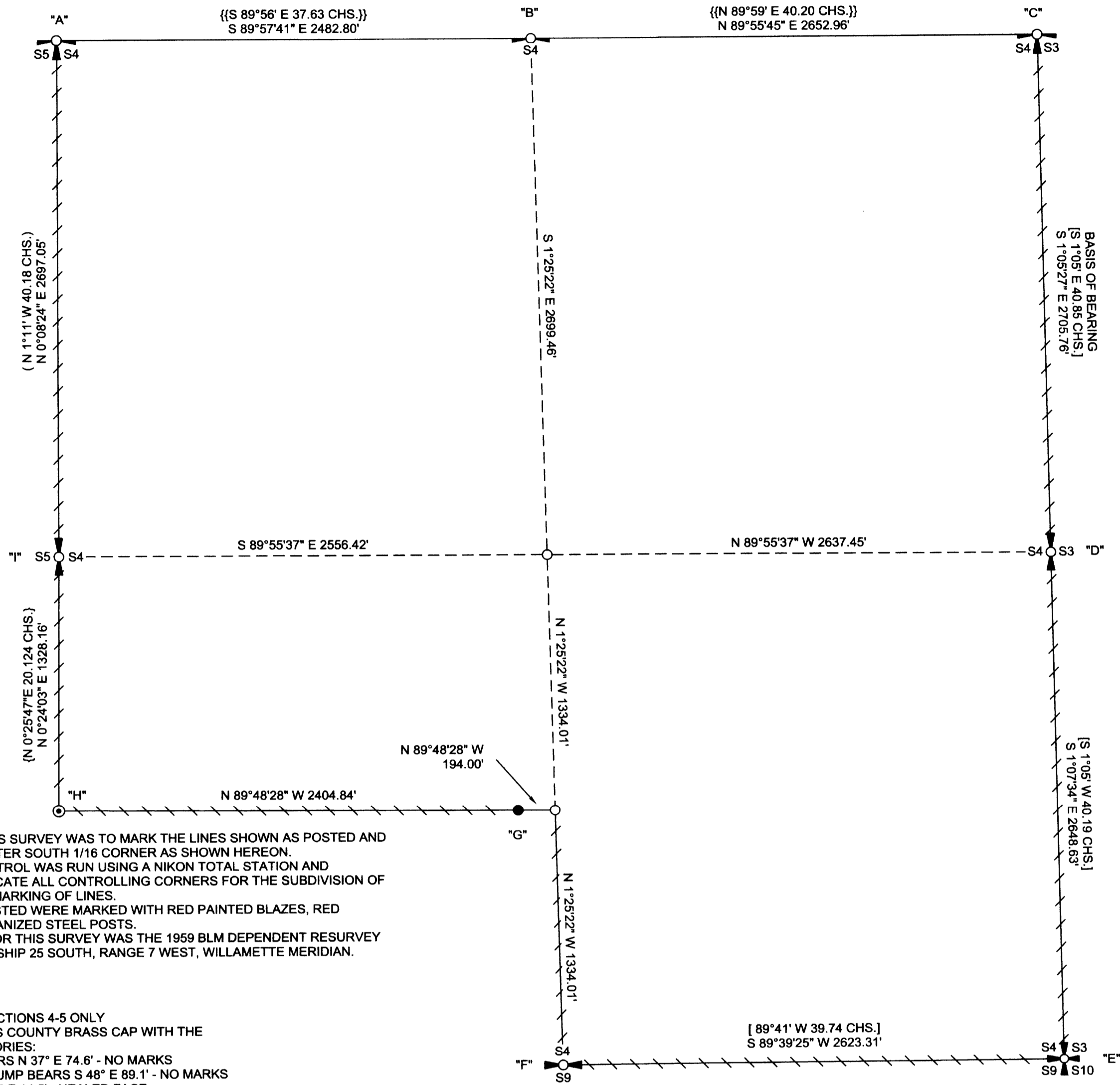


RECORD OF SURVEY
 FOR: ROSEBURG RESOURCES CO.
 NW1/4, NE1/4, SE1/4, SW1/4, SECTION 4, T25S, R7W, W.M.
 DOUGLAS COUNTY, OREGON
 28 JANUARY 2011

FILED
 DATE 2/9/2011 BY: *RLR*
 This survey consists of:
 Map: *M162-1*
 Narrative:
 Corner Rpt:
 DOUGLAS COUNTY
 SURVEYOR



NARRATIVE:
 THE PURPOSE OF THIS SURVEY WAS TO MARK THE LINES SHOWN AS POSTED AND MONUMENT THE CENTER SOUTH 1/16 CORNER AS SHOWN HEREON. A CLOSED LOOP CONTROL WAS RUN USING A NIKON TOTAL STATION AND ASHTECH GPS TO LOCATE ALL CONTROLLING CORNERS FOR THE SUBDIVISION OF SECTION 4 AND THE MARKING OF LINES. LINES SHOWN AS POSTED WERE MARKED WITH RED PAINTED BLAZES, RED FLAGGING AND GALVANIZED STEEL POSTS. BASIS OF BEARING FOR THIS SURVEY WAS THE 1959 BLM DEPENDENT RESURVEY OF SECTION 4, TOWNSHIP 25 SOUTH, RANGE 7 WEST, WILLAMETTE MERIDIAN.

"A"
 SECTION CORNER SECTIONS 4-5 ONLY
 FOUND 1962 DOUGLAS COUNTY BRASS CAP WITH THE FOLLOWING ACCESSORIES:
 78" D. FIR STUMP BEARS N 37° E 74.6' - NO MARKS
 36" ROTTED D. FIR STUMP BEARS S 48° E 89.1' - NO MARKS
 48" W. FIR BEARS S 12° E 14.5' - HEALED FACE
 31" D. FIR BEARS S 17° W 14.5' - HEALED FACE
 CLOSING CORNER SECTION CORNERS 32 AND 33, T. 24 S., R. 7 W. BEARS S 89° 53' 00" E 51.81' PER 2000 BLM RECORDS

"B"
 1/4 CORNER SECTION 4 ONLY
 FOUND 1966 DOUGLAS COUNTY BRASS CAP WITH THE FOLLOWING ACCESSORIES:
 33" W. FIR BEARS N 8° E 64.8' - HEALED FACE
 24" D. FIR BEARS S 22-1/4° W 59.1' - SCRIBING VISIBLE (BLM TAGGED 2006)
 11" D. FIR BEARS S 84-1/2° W 44.7' - SCRIBING VISIBLE (BLM TAGGED 2006)
 1/4 CORNER SECTION 33, T. 24 S., R. 7 W. BEARS N 89° 59' E 213.18' PER 1983 BLM RECORDS
 NEW BT THIS SURVEY
 21" D. FIR BEARS N 82° W 16.7' - BLAZED, SCRIBED "X BT"

"C"
 SECTION CORNER SECTIONS 3-4 ONLY
 FOUND 1973 BLM BRASS CAP WITH THE FOLLOWING ACCESSORIES:
 INDETERMINATE DIAMETER D. FIR STUMP BEARS N 39-1/2° E 14.5' - SCRIBING VISIBLE
 30" I. CEDAR STUMP BEARS S 31° W 21.5' - NO MARKS
 20" D. FIR BEARS S 12-1/2° E 20.8' - HEALED FACE
 22" D. FIR BEARS S 81° W 40.6' - HEALED FACE

"D"
 1/4 CORNER SECTIONS 3-4
 FOUND 1958 BLM BRASS CAP WITH THE FOLLOWING ACCESSORIES:
 31" I. CEDAR BEARS N 29° E 33.7' - HEALED FACE
 28" D. FIR BEARS N 45° W 46.9' - SCRIBING VISIBLE
 NEW BT'S THIS SURVEY
 26" MADRONE BEARS N 5° W 23.4' - BLAZED, SCRIBED "1/4 S4 BT"
 25" D. FIR BEARS S 2° E 5.1' - BLAZED, SCRIBED "1/4 S3 BT"

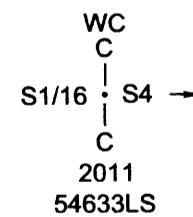
"F"
 1/4 CORNER SECTIONS 4-9
 FOUND 1958 BLM BRASS CAP WITH THE FOLLOWING ACCESSORIES:
 70" D. FIR BEARS N 87° W 132.0' - BARK SCRIBING VISIBLE
 31" MADRONE BEARS S 88° E 108.9' - ROTTED FACE
 37" D. FIR BEARS N 5-3/4° W 43.9' - HEALED FACE
 28" D. FIR BEARS S 18-1/2° E 22.1' - HEALED FACE

"H"
 S1/16 CORNER SECTIONS 4-5
 FOUND 1997 BLM BRASS CAP WITH THE FOLLOWING ACCESSORIES:
 21" D. FIR BEARS N 51-3/4° E 13.2' - HEALED FACE
 21" D. FIR BEARS N 50-1/4° W 12.2' - HEALED FACE

"I"
 1/4 CORNER SECTIONS 4-5
 FOUND 1969 DOUGLAS COUNTY BRASS CAP WITH THE FOLLOWING ACCESSORIES:
 48" D. FIR STUMP BEARS N 2° W 23.8' - BARK SCRIBING VISIBLE
 19" W. FIR BEARS S 19° E 20.8' - HEALED FACE
 21" W. FIR BEARS N 60-3/4° W 42.2' - HEALED FACE
 NEW BT THIS SURVEY
 32" I. CEDAR BEARS N 78° E 19.4' - BLAZED, SCRIBED "1/4 S4 BT"

"E"
 SECTION CORNER SECTIONS 3-4-9-10
 FOUND 1958 BLM BRASS CAP WITH THE FOLLOWING ACCESSORIES:
 27" W. FIR STUMP BEARS N 68-1/4° E 111.7' - SCRIBING VISIBLE
 27" W. FIR BEARS S 13-1/2° E 51.6' - HEALED FACE
 26" W. FIR BEARS S 40° W 45.5' - HEALED FACE
 24" W. FIR BEARS N 40° W 38.9' - HEALED FACE
 32" W. FIR BEARS N 64-1/2° E 173.5' - SCRIBING VISIBLE

"G"
 WC CS1/16 SECTION 4
 SET 2-1/2" ALUMINUM CAP MARKED AS SHOWN ON 5/8" X 30" REBAR, WHICH BEARS N 89°48'28" W 194.00' FROM TRUE CORNER POSITION, WHICH FALLS ON STEEP ROCK FACE. THE FOLLOWING ACCESSORIES WERE ESTABLISHED FOR THE WC:
 26" D. FIR BEARS N 56° E 8.7' - BLAZED, SCRIBED BREST HIGH "X"
 AND "BT" AT BASE
 22" I. CEDAR BEARS S 15° E 21.5' - BLAZED, SCRIBED BREST HIGH "X" AND "BT" AT BASE



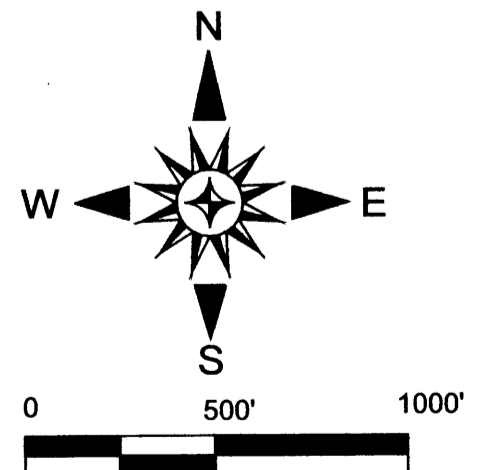
LEGEND

- CALCULATED POSITION NO MONUMENT SET
- SET 5/8" X 30" REBAR WITH 2-1/2" ALUMINUM CAP MARKED AS SHOWN
- ⊙ FOUND 1/16 CORNER AS NOTED
- FOUND SECTION CORNER COMMON TO TWO SECTIONS ONLY AS NOTED
- ⊙ FOUND 1/4 CORNER AS NOTED
- ⊙ FOUND SECTION CORNER AS NOTED
- FOUND 1/4 CORNER ONE SECTION ONLY AS NOTED
- { } BLM RECORD DATA 2000
- {{ }} BLM RECORD DATA 1983
- [] BLM RECORD DATA 1959
- () GLO RECORD DATA 1897
- POSTED LINE AS NOTED
- GLO GENERAL LAND OFFICE
- BLM BUREAU OF LAND MANAGEMENT

REGISTERED
 PROFESSIONAL
 LAND SURVEYOR
Ronald L. Rice
 OREGON
 JULY 9, 2002
 RONALD L. RICE
 54633LS

EXPIRATION DATE: 12-31-2012

Ward NorthWest, Inc.
 1732 Laurel PL Ste A FLORENCE, OR 97439
 (541) 997-9201 FAX: 541-902-0743



FILE NAME		
10-62.TRV	DATE	DRAWN BY
SCALE	1-28-11	RLR
500 FT/in	REVISION	SHEET
JOB	OSPREY RIDGE	1/1

This map drawn with TRAVERSE PC Software