

SURVEY FOR: JUNIPER PROPERTIES LIMITED PARTNERSHIP

SECTION 9 THE S 1/2 OF THE S1/2 T. 23 S. R. 6 W. W. M. DOUGLAS COUNTY OREGON

SURVEYED BY: LONE ROCK TIMBER MANAGEMENT CO.

P. O. BOX 1127 ROSEBURG, ORE. TRACT: J 23-6-9 JULY 2010

FILED
Date: 8-2-2010 By: JC
This survey consists of:
Map: M161-9
Narrative:
Corner Rpt:
DOUGLAS COUNTY
SURVEYOR

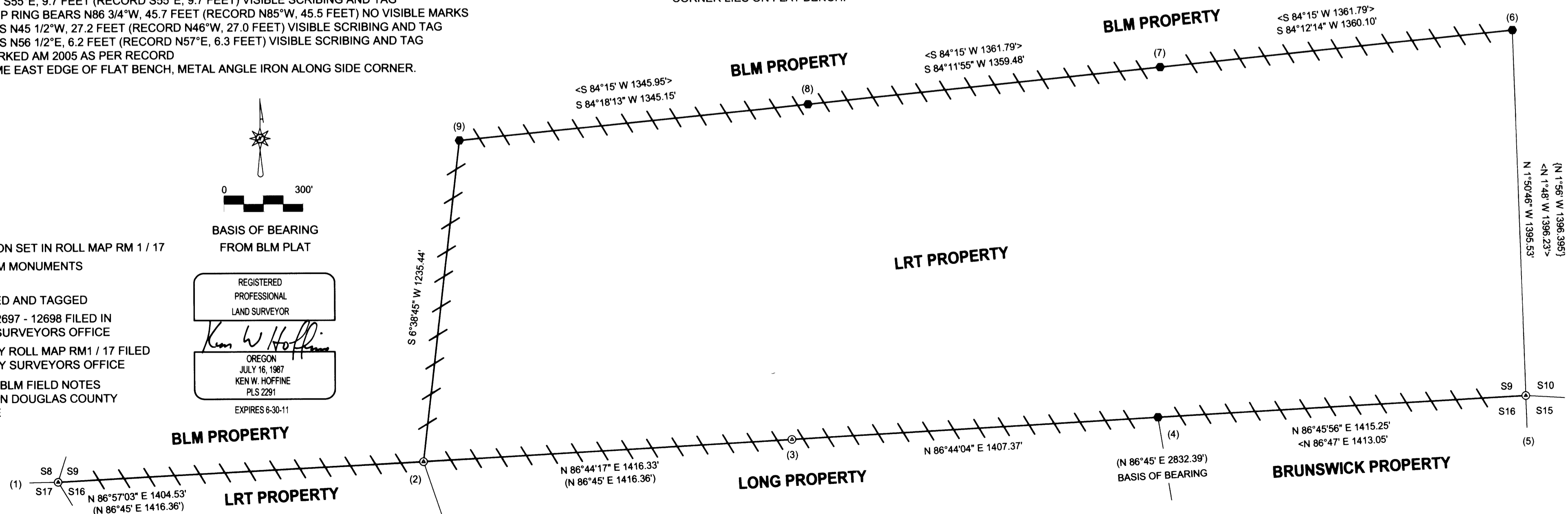
NARRATIVE:

THIS SURVEY WAS CONDUCTED TO ESTABLISH PROPERTY LINES FOR TIMBER CUTTING PURPOSES. SECTION 9 WAS SURVEYED AND SUBDIVIDED BY WILFORD HAINES IN 1956. SUBSEQUENTLY GLO SURVEYED THIS SECTION IN 1957 WITH NO MENTION OF HAINES SURVEY IN THE GLO OFFICIAL FIELD NOTES SETTING MONUMENTS AT A DIFFERENT LOCATION FROM HAINES AT THE SOUTHWEST SECTION CORNER AND SOUTH 1/4 CORNER. TIMBER HARVESTING HAS TAKEN PLACE THE LAST 50 YEARS USING THE HAINES AND BLM CORNERS. WE RAN CLOSED LOOP RANDOM TRAVERSES TO ALL CORNERS SHOWN ON THIS MAP. WE THEN MET WITH BLM CADASTRAL SURVEYORS, TIM MOORE AND AL SKEESICK AND DISCUSSED THE RELATIVE POSITION OF BLM AND HAINES MONUMENTS USING LRT MEASUREMENTS. BASED ON THE LONG STANDING USE OF THE MONUMENTS IN THE GROUND, WE DECIDED TO USE THE FOLLOWING MONUMENTS FOR RE-ESTABLISHING BOUNDARIES BETWEEN NEIGHBORING PROPERTIES. WE HELD BLM MONUMENTS AT THE SOUTHWEST CORNER, SOUTH 1/4 AND SOUTHWEST CORNERS OF SECTION 9 AS THE CONTROL MONUMENTS. WE HELD HAINES 1/16 CORNER MONUMENTS AS SHOWN ON THIS MAP TO CONTROL THE SUBDIVISION BOUNDARIES OF SECTION 9. LRT THEN COMPUTED AND MARKED THE PROPERTY BOUNDARY LINES AS SHOWN BY RIBBONING, BLAZING, PAINTING AND TAGGING. THIS SURVEY WAS DONE WITH A NIKON DTM 522 TOTAL STATION WITH GARY ANGIOLET, IGNACIO ROMAN AND DAVE RING, JR. ASSISTING ME.

CORNER INFORMATION:

- 1) THE SOUTHWEST CORNER OF SECTION 9
FOUND 1957 BLM BRASS CAP 0.8 FEET ABOVE GROUND.
-- 18" MADRONE STUMP BEARS N24 3/4"W, 51.8 FEET (RECORD N26"W, 51.48 FEET) UNREADABLE TAG, NO VISIBLE MARKS
-- 20" DOUGLAS FIR BEARS S17 3/4"W, 102.2 FEET (RECORD S17"W, 102.3 FEET) UNREADABLE TAG, HEALED FACE
-- HAINES T-IRON BEARS S89°48'W, 8.37 FEET
-- HAINES B.T. 51" CEDAR STUMP BEARS N10 3/4"W, 104.8 FEET (RECORD N7 15"W, 103.0 FEET) VISIBLE SCRIBING AND TAG
-- HAINES B.T. 42" CEDAR STUMP BEARS S30 1/4"E, 86.3 FEET (RECORD S32°24'E, 94.6 FEET) VISIBLE FACE AND TAG
-- HAINES B.T. 32" DOUGLAS FIR BEARS S3 1/2"E, 72.3 FEET (RECORD S4°38'E, 73.0 FEET) WELL HEALED FACE AND TAG
-- HAINES B.T. 42" DOUGLAS FIR BEARS N77°E, 37.9 FEET (RECORD N79°E, 42.9 FEET) NO VISIBLE MARKS AND TAG
CORNER LIES ON WEST SIDE OF MAIN RIDGE TOP.
- 2) THE WEST 1/16 CORNER BETWEEN SECTIONS 9 & 16
FOUND 1957 BLM BRASS CAP.
-- HAINES T-IRON BEARS N22 1/2"W, 3.27 FEET
-- 26" METAL CAPPED DOUGLAS FIR STUMP BEARS N27 1/2"W, 24.7 FEET, THIS IS A B.T. FOR HAINES T-IRON HEALED FACE AND TAG
-- 21" METAL CAPPED DOUGLAS FIR STUMP BEARS N65 1/4"W, 25.5 FEET (RECORD N66"W, 25.74 FEET) ROTTEN FACE AND TAG
-- NEW 19" DOUGLAS FIR BEARS S10 1/4"E, 27.5 FEET, WE SCRIBE W 1/16 S16 B.T. AND TAG
-- NEW 9" DOUGLAS FIR BEARS N13 1/2"E, 16.7 FEET, WE SCRIBE W 1/16 S9 B.T. AND TAG
CORNER LIES ON STEEP WEST FACING SLOPE APPROXIMATELY 40 FEET EAST OF ROCK ROAD 22-7-14.1. METAL FENCE POST 0.5 FEET NORTH OF CORNER.
- 3) THE SOUTH QUARTER CORNER BETWEEN SECTIONS 9 AND 16
FOUND 1957 BLM BRASS CAP 0.8 FEET ABOVE GROUND.
-- HAINES T-IRON BEARS N79°21'W, 4.45 FEET
-- 10" DOUGLAS FIR BEARS N58 3/4"W, 8.0 FEET (NO RECORD) HEALED FACE AND BLM TAG THAT READS S61°E, 7.9 FEET
-- 15" DOUGLAS FIR BEARS S85 1/4"E, 6.7 FEET (NO RECORD) HEALED FACE AND BLM TAG THAT READS N83°W, 6.6 FEET
CORNER LIES ON WEST FACING SLOPE.
- 4) THE EAST 1/16 CORNER BETWEEN SECTIONS 9 AND 16
FOUND HAINES T-IRON AT GROUND LEVEL.
-- 49" DOUGLAS FIR BEARS N7 1/2"E, 103.4 FEET (RECORD N8°E, 104.2 FEET), HEALED FACE AND TAG
-- 27" DOUGLAS FIR STUMP BEARS N62°E, 144.9 FEET (RECORD N62°50'E, 145.0 FEET) HEALED FACE AND TAG
-- NEW 12" DOUGLAS FIR STUMP BEARS S30 3/4"E, 12.5 FEET, WE SCRIBE E 1/16 S16 B.T. AND TAG
CORNER LIES IN MOUND OF STONES AT WEST EDGE OF LARGE BENCH.
- 5) THE SOUTHWEST SECTION CORNER OF SECTION 9
FOUND 1955 GLO BRASS CAP.
-- 24" DOUGLAS FIR STUMP BEARS S59 3/4"E, 38.3 FEET (RECORD S59 1/2"E, 38.28 FEET) HEALED FACE AND TAG
-- 42" MAPLE BEARS S43 1/2"W, 57.1 FEET (RECORD S42°W, 57.42 FEET) NO VISIBLE MARKS AND TAG
-- 7" DOUGLAS FIR BEARS S55°E, 9.7 FEET (RECORD S55°E, 9.7 FEET) VISIBLE SCRIBING AND TAG
-- 14" DOUGLAS FIR STUMP RING BEARS N86 3/4"W, 45.7 FEET (RECORD N85°W, 45.5 FEET) NO VISIBLE MARKS
-- 14" DOUGLAS FIR BEARS N45 1/2"W, 27.2 FEET (RECORD N46°W, 27.0 FEET) VISIBLE SCRIBING AND TAG
-- 10" DOUGLAS FIR BEARS N56 1/2"E, 6.2 FEET (RECORD N57°E, 6.3 FEET) VISIBLE SCRIBING AND TAG
-- FOUND BRASS CAP MARKED AM 2005 AS PER RECORD
CORNER LIES AT EXTREME EAST EDGE OF FLAT BENCH, METAL ANGLE IRON ALONG SIDE CORNER.

- 6) SOUTH 1/16 CORNER BETWEEN SECTIONS 9 AND 10
FOUND HAINES T-IRON 0.5 FEET ABOVE GROUND.
-- 28" DOUGLAS FIR STUMP BEARS S72 1/2"E, 18.2 FEET (RECORD S73°E, 19.0 FEET) VISIBLE SCRIBING AND TAG
-- 16" DOUGLAS FIR SNAG BEARS S1°E, 6.7 FEET (RECORD SOUTH 6.9 FEET) HEALED FACE AND TAG
-- NEW 8" DOUGLAS FIR BEARS N82°E, 4.1 FEET, WE SCRIBE S 1/16 S10 B.T. AND TAG TREE
-- NEW 20" DOUGLAS FIR BEARS S18 1/2"W, 7.6 FEET, WE SCRIBE S 1/16 S9 B.T. AND TAG TREE
CORNER LIES ON STEEP SOUTHWEST SLOPE.
- 7) SOUTHWEST 1/16 CORNER OF SECTION 9
FOUND HAINES T-IRON 1.0 FEET ABOVE GROUND.
-- 38" DOUGLAS FIR STUMP BEARS S 1 1/4"E, 26.8 FEET (RECORD S1°E, 26.8 FEET) CHOPPED OUT FACE AND TAG
-- 43" DOUGLAS FIR BEARS N52°W, 33.3 FEET (RECORD N56°W, 33.7 FEET) HEALED FACE AND TAG
-- NEW 7" DOUGLAS FIR BEARS S22 1/2"E, 17.9 FEET, WE SCRIBE SE 1/16 S9 B.T. AND TAG TREE
CORNER LIES ON STEEP WEST FACING SLOPE APPROXIMATELY 150 FEET WEST OF RIDGETOP SKID ROAD.
- 8) CENTERSOUTH 1/16 CORNER OF SECTION 9
FOUND HAINES T-IRON 0.2 FEET ABOVE GROUND.
-- 31" DOUGLAS FIR BEARS N60°W, 2.5 FEET AS PER RECORD TOO CLOSE TO MEASURE HEALED FACE AND TAG
-- 21" DOUGLAS FIR BEARS S28 3/4"E, 34.9 FEET, NO RECORD HEALED FACE AND TAG THAT READS N29°W, 35.2 FEET
-- RECORD 10" DOUGLAS FIR THAT BEARS S66°E, 12.4 FEET IS NOW FAINT ROOT REMAINS
CORNER LIES ON SOUTH FACING SLOPE.
- 9) THE SOUTHWEST 1/16 CORNER OF SECTION 9
FOUND HAINES T-IRON 0.8 FEET ABOVE GROUND.
-- 37" COVERED CEDAR STUMP BEARS N69°W, 52.3 FEET (RECORD N68°W, 52.5 FEET) PARTIAL VISIBLE SCRIBING
-- 22" COVERED DOUGLAS FIR STUMP AT N28°E, 38.3 FEET RECORD, STUMP NOT VISIBLE, BEHIND STANDING TIMBER.
-- NEW 16" DOUGLAS FIR BEARS S42 3/4"E, 12.0 FEET, WE SCRIBE SW 1/16 S9 B.T. AND TAG
-- NEW 12" DOUGLAS FIR BEARS N40°W, 9.1 FEET, WE SCRIBE SW 1/16 S9 B.T. AND TAG
CORNER LIES ON FLAT BENCH.



- LEGEND:**
- — FOUND HAINES T-IRON SET IN ROLL MAP RM 1 / 17
 - ⊙ — FOUND GLO AND BLM MONUMENTS
 - — PROJECTED LINES
 - — LINE BLAZED PAINTED AND TAGGED
 - () — BLM FIELD NOTES 12697 - 12698 FILED IN DOUGLAS COUNTY SURVEYORS OFFICE
 - < > — HAINES 1957 SURVEY ROLL MAP RM1 / 17 FILED IN DOUGLAS COUNTY SURVEYORS OFFICE
 - { } — CALCULATED FROM BLM FIELD NOTES 12687 - 12688 FILED IN DOUGLAS COUNTY SURVEYORS OFFICE

BASIS OF BEARING
FROM BLM PLAT

REGISTERED
PROFESSIONAL
LAND SURVEYOR

Ken W. Hoffine

OREGON
JULY 16, 1987
KEN W. HOFFINE
PLS 2291
EXPIRES 6-30-11

MAP FILE M161-9

LRT PROPERTY
(N 1°56' W 1396.395')
<N 1°48' W 1396.23>
N 1°50'48" W 1396.53'

MAP FILE M161-9