

# BOUNDARY SURVEY

LOCATED IN THE NE1/4, NW1/4, SE1/4 & SW1/4 OF SECTION 13,  
TOWNSHIP 31 SOUTH, RANGE 9 WEST, WILLAMETTE MERIDIAN  
COOS COUNTY, OREGON

SURVEY FOR: PLUM CR. TIMBERLANDS, L.P.  
COOS BAY, OR

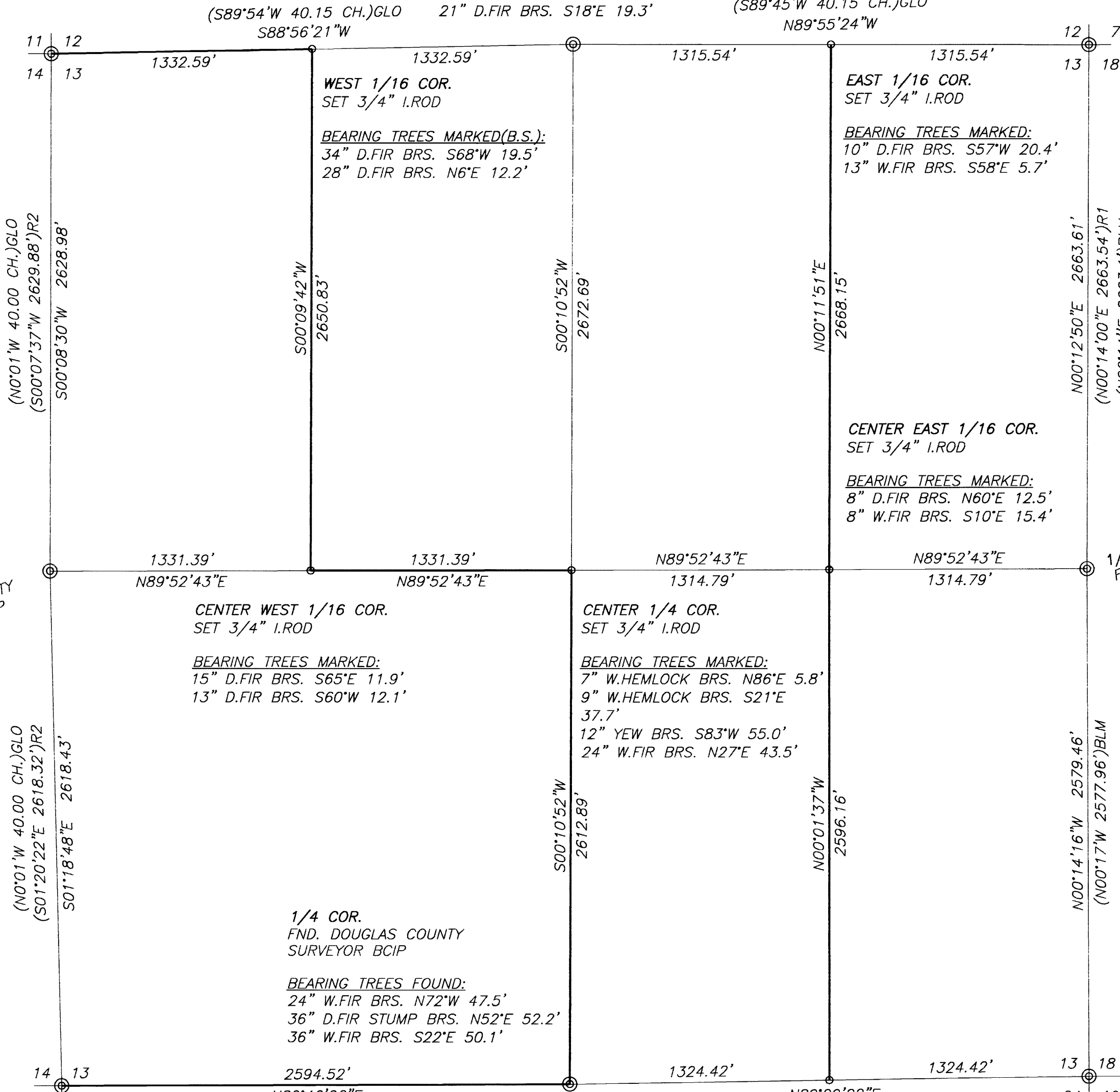
DATE OF SURVEY: JUNE 2010

1/4 COR.  
FND. 1967 DOUGLAS COUNTY BCIP

BEARING TREES FOUND:  
60" D.FIR STUMP BRS. N77°E 9.4'  
16" W.FIR BRS. N54°E 52.4'  
21" D.FIR BRS. S18°E 19.3'

(S89°45'W 40.15 CH.)GLO  
N89°55'24"W

FND. 1967 DOUGLAS COUNTY SURVEYOR BCIP



NARRATIVE

THE PURPOSE OF THIS SURVEY WAS TO ESTABLISH AND MONUMENT BOUNDARIES OF A PARCEL OWNED BY PLUM CREEK TIMBERLANDS, L.P. BOUNDARIES SHOWN HEREON AS MARKED WERE BLAZED & PAINTED RED AND MARKED WITH RED FLAGGING. DURING THE COURSE OF MY M155-17 SURVEY, THE E 1/16 CORNER ON THE SOUTH BOUNDARY OF SECTION 13 WAS APPARENTLY MONUMENTED INCORRECTLY. I FIND THIS MONUMENT OUT OF POSITION, BEARING N5°34'36"W 17.45' FROM THE TRUE LOCATION. I HAVE ESTABLISHED A NEW MONUMENT AT THE CORRECT POSITION AND REMOVED THE ERRONEOUS ONE. SCRIBING & TAGS ON THE BEARING TREES THAT REFERENCED THE INCORRECT MONUMENT HAVE ALSO BEEN REMOVED. ASSISTING IN THIS SURVEY WERE DANNY DEAN AND TYLER DEAN.

BASIS OF BEARING  
TRUE NORTH PER GPS OBSERVATIONS

REFERENCE SURVEYS

- R1) M156-5 BY C.WOODRUFF, APRIL 2008
- R2) M160-4 BY T.HOSTETTER, SEPTEMBER 2009
- R3) M155-17 BY C.WOODRUFF, DECEMBER 2007

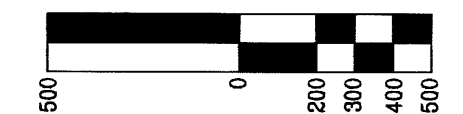
\*NOTE:

BEARING TREES MARKED WERE SCRIBED, TAGGED AND PAINTED. DISTANCES WERE MEASURED TO A NAIL AT SIDE CENTER.

LEGEND

- ⊙ FND. MONUMENT AS NOTED
- SET 3/4"X36" I.ROD W/ 3" ALUM. CAP
- R ( ) RECORD DIMENSION
- LINE BLAZED & PAINTED
- B.S. BARK SCRIBED

SCALE 1" = 500 Feet



FND. 1967 DOUGLAS COUNTY SURVEYOR BCIP

BEARING TREES FOUND:  
21" W.FIR BRS. N84°W 61.5'  
26" P.O.CEDAR BRS. S45°W 42.0'  
15" P.O.CEDAR BRS. S17°E 6.9'  
12" D.FIR STUMP BRS. N15°E 68.9'

(WEST 40.12 CH.)GLO  
N89°09'22"E

EAST 1/16 COR.  
SET 3/4" I.ROD W/3" ALUM. CAP

BEARING TREES MARKED:  
18" W.FIR BRS. N46°W 36.4'  
12" D.FIR BRS. S6°W 9.6'

REGISTERED PROFESSIONAL LAND SURVEYOR

*Corey M. Woodruff*  
OREGON  
July 12, 2005  
Corey M. Woodruff  
62978

EXPIRES 6/30/12

**Stuntzner Engineering & Forestry, L.L.C.**

ENGINEERING • LAND SURVEYING • FORESTRY  
PLANNING • WATER RIGHTS

705 South 4th St. Phone: (541) 267-2872  
Post Office Box 118 Coos Bay, Oregon 97420 Fax: (541) 267-0588

Drawn By: Corey Woodruff Date: July 2010

Checked By: Drawing No.: 10-096

Designed By: Revised:

Job Name: PC Elk Valley 13 Sheet 1 of 1

MAP FILE M161-7

MAP FILE M161-7