

NORTHSTAR SURVEYING, INC.
720 N.W. 4th Street
Corvallis, Oregon 97330
Phone: 541-757-9050

REGISTERED
PROFESSIONAL
LAND SURVEYOR
Robert Alan Cook
OREGON
JULY 26, 1988
ROBERT ALAN COOK
2336
RENEWS: 12/31/2011

RECORD OF SURVEY
for
WEYERHAEUSER COMPANY

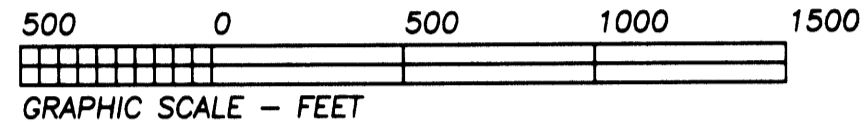
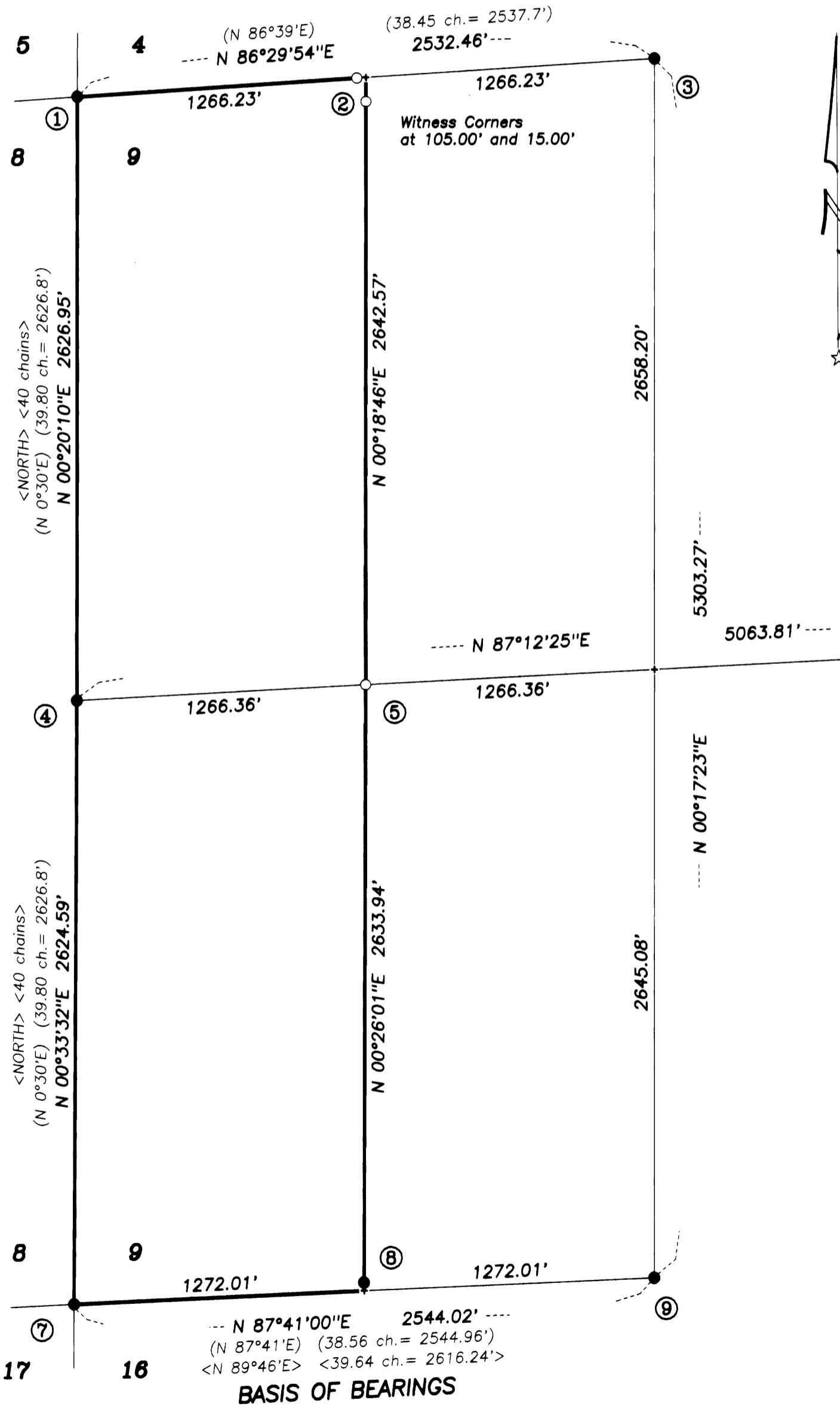
in the
**WEST HALF OF SECTION 9
T 24 S, R 3 W, W.M.
DOUGLAS COUNTY, OREGON**

DECEMBER 15, 2010

FILED
Date: 12/28/2010 By: JC
This survey consists of:
Map: M161-57
Narrative:
Corner Rpt:
DOUGLAS COUNTY
SURVEYOR

CORNER DATA

- ① CORNER OF SECTIONS 4, 5, 8 & 9
Found 1950 GLO brass cap on 1-1/2" pipe up 20" on flat ground. I set 6' steel post as a riser.
BT's found:
10" yew stump high cut, N 64°30'E 21.1 feet, tag & paint.
8" Yew S 76°W 43.1 feet, healed face, tag & paint
BT's set:
12" Hemlock S 40°E 7.3 feet scribed "T24SR3WS9" above "BT".
15" D. Fir N 7°W 23.1 feet scribed "T24SR3WS5" above "BT".
- ② WEST 1/16 CORNER SECTIONS 4 & 9
Position falls in the center of a N-S ridge road. I set witness corners:
N*MON S 86°29'54"W 15.00 feet.
N*MON S 0°18'46"W 105.00 feet.
17" D. Fir S 71°30'W 16.5 feet scribed "X" above "BT".
12" D. Fir N 25°30'W 54.2 feet scribed "X" above "BT".
- ③ 1/4 CORNER SECTIONS 4 & 9
Found 1950 GLO brass cap on 3/4" pipe flush with ground on Southwest slope about 70 feet NE of a creek. I set 6' steel post east 0.5'.
BT's found:
58" D. Fir stump S 53°E 33.1 feet with tag.
26" D. Fir stump N 41°30'E 17.9 feet with tag.
BT's set:
17" D. Fir N 27°W 8.3 feet scribed "1/4S4" above "BT".
18" D. Fir S 80°E 18.3 feet scribed "1/4S9" above "BT".
RR spike control points lie N 25°31'47"E 724.61' and N 7°47'23"E 1080.72'.
- ④ 1/4 CORNER SECTIONS 8 & 9
Found 1950 GLO brass cap on 3/4" pipe up 6" on SE slope about 100' NE of an old cat road.
50" Cedar S 88°E 60 lks., healed face, tag and paint.
32" Hemlock N 16°30'W 42 lks., healed face, tag and paint.
- ⑤ CENTER-WEST 1/16 CORNER SECTION 9
Set N*MON in thick brush about 30 feet east of an old cat road and about 150 feet south of the top of a ridge.
20" D. Fir N 12°W 1.9 feet scribed "CW1/16S9" above "BT".
8" D. Fir N 75°W 19.5 feet scribed "CW1/16S9" above "BT".
- ⑥ 1/4 CORNER SECTIONS 9 & 10
Found 2-1/2" Douglas Co. brass cap down 1" with monel pipe riser on SE side. I set steel post south 0.8'.
BT's found:
27" Hemlock snag N 80°W 7.92 feet <N 80°W 12 lks> to face with scribing visible "1/4S" on plain open face.
15" D. Fir N 62°E 16.5 ft. with healed face and tag.
16" D. Fir N 50°W 23.3 ft. with healed face and tag.
BT's set:
15" D. Fir S 5°E 29.8 ft. scribed "1/4S10" above "BT".
11" D. Fir S 28°W 20.4 ft. scribed "1/4S9" above "BT".
- ⑦ CORNER OF SECTIONS 8, 9, 16, AND 17
Found 1950 GLO brass cap on 1-1/2" pipe up 16" on shoulder of ridge in windfalls; (steep down to north). Set 6' steel post NE 1.0'
BT's found:
10" D. Fir windfall (S 89°E 15 lks.) healed face and tag.
24" D. Fir windfall (S 47°45'W 22 lks.) healed face and tag.
BT's set:
11" D. Fir N 68°W 28.3 feet scribed "T24SR3WS8" above "BT".
12" D. Fir S 36°W 50.0 feet scribed "T24SR3WS17" above "BT".
6" Hemlock S 83°E 14.0 feet scribed "T24SR3WS16" above "BT".
10" Hemlock N 28°E 23.4 feet scribed "T24SR3WS9" above "BT".
A 60d nail for control lies S 88°26'02"E 22.20 feet.
- ⑧ WEST 1/16 CORNER SECTIONS 9 AND 17
Nothing set; I found a 3/4" monel pipe per unrecorded 1957 Weyerhaeuser survey on steep west slope 1.00 ft. N 27°W from the calculated position and about 40 ft. east of the toe of slope. BT to the pipe:
36" Maple S 37°W 43.7 feet, healed face and tag.
14" Hemlock N 4°E 26.9 feet, healed face, tag and paint.
- ⑨ 1/4 CORNER SECTIONS 9 AND 17
Found 1950 GLO brass cap on 3/4" pipe up 6" in ferns about 75 ft. north of a gravel road. Steel fence post east 2.0 ft.
BT's found:
60" D. Fir stump (S 62°E 38.9 ft.) with tag and paint.
BT's set:
15" D. Fir forked N 80°W 15.6 ft. scribed "1/4S9" above "BT".
14" D. Fir by road S 25°E 52.8 ft. scribed "1/4S16" above "BT".
60d nail for control lies on S. side of road S 41°51'15"W 122.97 ft.



LEGEND

-Found Monument as noted; See Corner Data.
-Set Monument: N*MON = 5/8" x 30" rebar with a red plastic cap stamped "NORTHSTAR SURVEYING".
- +Computed Position, nothing found or set.

Data of, or computed from, the following:
< > ..Plat of T 24 S, R 3 W, approved April 26, 1872.
() ..Plat of T 24 S, R 3 W, approved December 3, 1951.

Pipe dimensions are inside diameter.

Lines marked with orange ribbon, orange painted 1/4 blazes on trees within 5 feet of line and 72" galvanized steel posts at approximately 150 to 200 foot intervals.

NARRATIVE

The purpose of this survey was to mark my client's property lines in this Section and to find or set monuments at the corner points as needed. The original survey of this section was in 1872. This plat showed a normal section with lines close to square and typical for this era. In 1951, the GLO resurveyed in this area. They found the SE and NE corner of this Section 9, then surveyed westerly without much luck finding corners. The NW and SW section corners, as well as the North, South and West 1/4 corners were all set by proportionate measurement. This survey did not visit the East 1/4 corner. I tied into these proportionate corners and found them to fit well enough for the era in which they were measured. I accepted these 1951 GLO positions as found. Consequently, the West 1/4 corner was not on the line between the NW and SW section corners. This put a bend in the most easterly of the lines I marked. I tied into the East 1/4 corner, where I found original 1872 evidence, then subdivided the section by proper method. There was some unrecorded monumentation by timber companies and/or government employees. I found "monel" pipes at the East 1/4 corner and the West 1/16 corner on the south line. I did not remonument this West 1/16 because it was within a foot of the calculated position and my client said not to bother. A monel pipe is not magnetic.