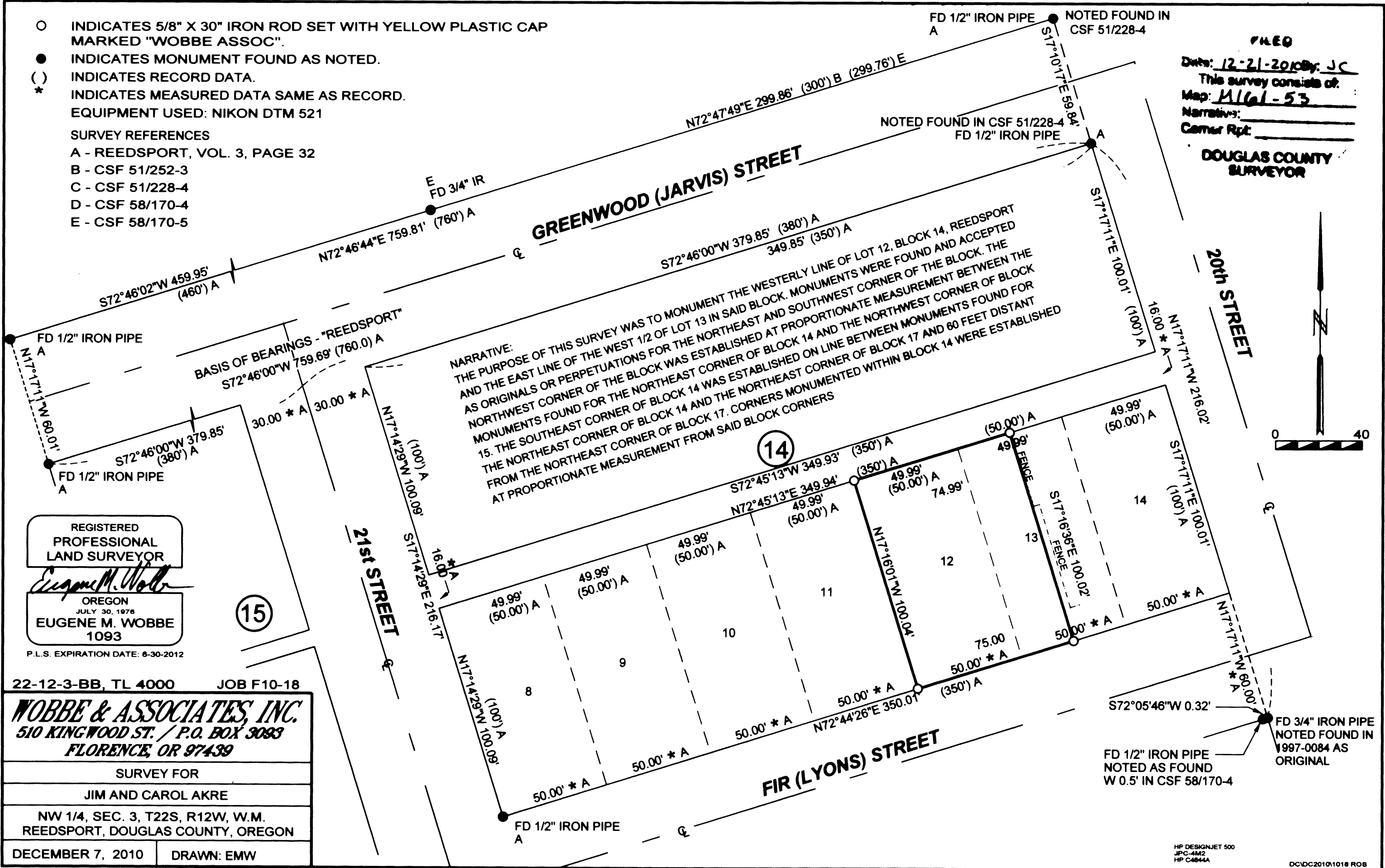


- INDICATES 5/8" X 30" IRON ROD SET WITH YELLOW PLASTIC CAP MARKED "WOBBE ASSOC".
 - INDICATES MONUMENT FOUND AS NOTED.
 - () INDICATES RECORD DATA.
 - * INDICATES MEASURED DATA SAME AS RECORD.
- EQUIPMENT USED: NIKON DTM 521

SURVEY REFERENCES
 A - REEDSPORT, VOL. 3, PAGE 32
 B - CSF 51/252-3
 C - CSF 51/228-4
 D - CSF 58/170-4
 E - CSF 58/170-5

FILED
 Date: 12-21-2010 By: JC
 This survey consists of:
 Map: 1161-53
 Narrative:
 Corner Rpt:
DOUGLAS COUNTY SURVEYOR

NARRATIVE:
 THE PURPOSE OF THIS SURVEY WAS TO MONUMENT THE WESTERLY LINE OF LOT 12, BLOCK 14, REEDSPORT AND THE EAST LINE OF THE WEST 1/2 OF LOT 13 IN SAID BLOCK. MONUMENTS WERE FOUND AND ACCEPTED AS ORIGINALS OR PERPETUATIONS FOR THE NORTHEAST AND SOUTHWEST CORNER OF THE BLOCK. THE NORTHWEST CORNER OF THE BLOCK WAS ESTABLISHED AT PROPORTIONATE MEASUREMENT BETWEEN THE MONUMENTS FOUND FOR THE NORTHEAST CORNER OF BLOCK 14 AND THE NORTHWEST CORNER OF BLOCK 15. THE SOUTHEAST CORNER OF BLOCK 14 WAS ESTABLISHED ON LINE BETWEEN MONUMENTS FOUND FOR THE NORTHEAST CORNER OF BLOCK 14 AND THE NORTHEAST CORNER OF BLOCK 17 AND 60 FEET DISTANT FROM THE NORTHEAST CORNER OF BLOCK 17. CORNERS MONUMENTED WITHIN BLOCK 14 WERE ESTABLISHED AT PROPORTIONATE MEASUREMENT FROM SAID BLOCK CORNERS



REGISTERED
 PROFESSIONAL
 LAND SURVEYOR
Eugene M. Wobbe
 OREGON
 JULY 30, 1976
 EUGENE M. WOBBE
 1093
 P.L.S. EXPIRATION DATE: 6-30-2012

22-12-3-BB, TL 4000 JOB F10-18
WOBBE & ASSOCIATES, INC.
 510 KINGWOOD ST. / P.O. BOX 3093
 FLORENCE, OR 97439

SURVEY FOR
 JIM AND CAROL AKRE

NW 1/4, SEC. 3, T22S, R12W, W.M.
 REEDSPORT, DOUGLAS COUNTY, OREGON

DECEMBER 7, 2010 DRAWN: EMW

MAP FILE 1161-53

MAP FILE 1161-53