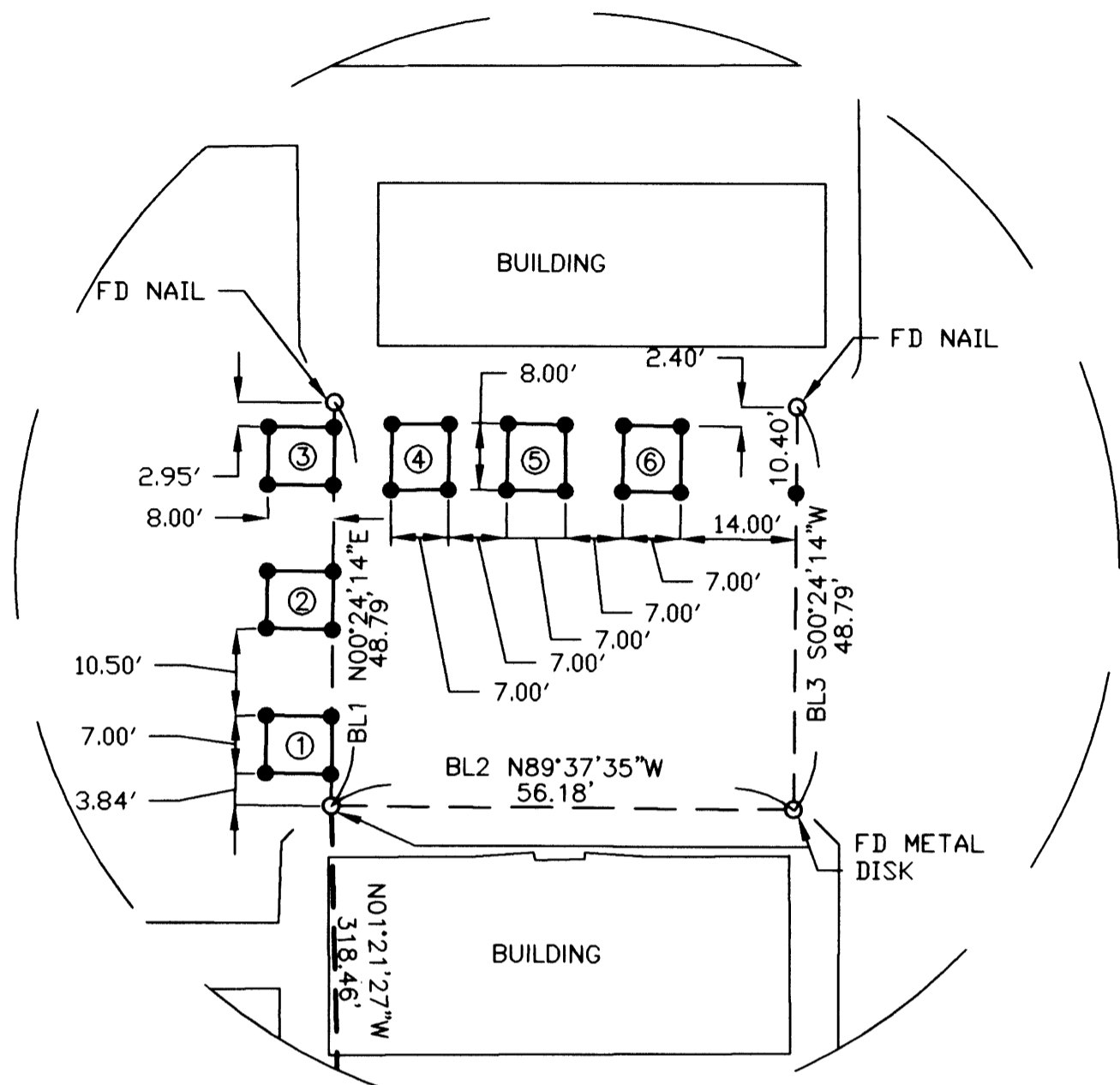


# CREMATION BENCH PLOT LAYOUT & PRIVATE ESTATES PLOT

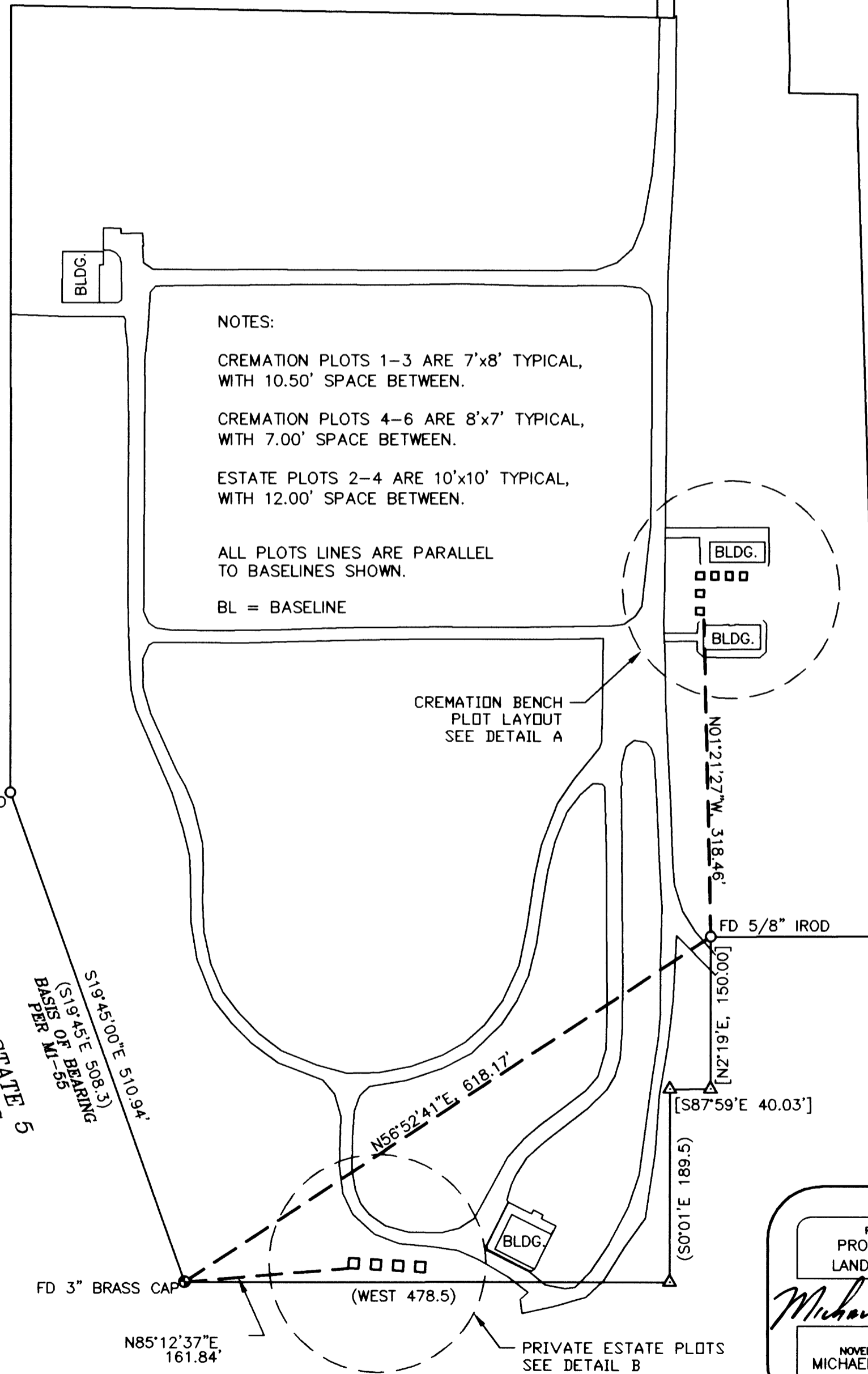
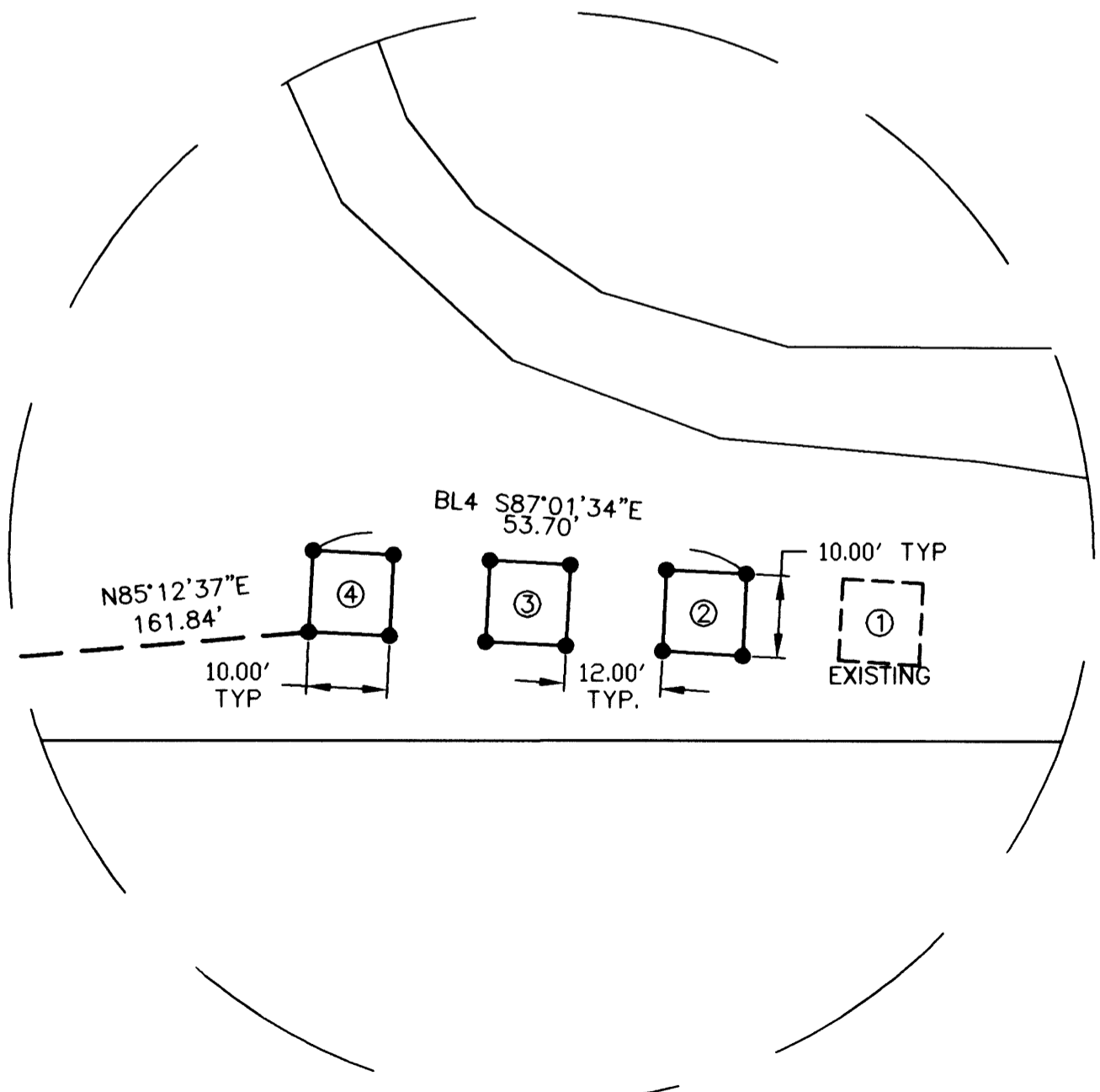
ROSEBURG MEMORIAL GARDENS  
NORTHEAST QUARTER OF SECTION 13  
TOWNSHIP 27 SOUTH, RANGE 06 WEST, W.M.  
DOUGLAS COUNTY, OREGON  
AUGUST 2010

FILED  
Date: 10/6/2010 By: NW  
This survey consists of:  
Map: M161-31  
Narrative: \_\_\_\_\_  
Corner Rpt: \_\_\_\_\_  
DOUGLAS COUNTY  
SURVEYOR

DETAIL A  
1"=20'



DETAIL B  
1"=20'



**NOTES:**

CREMATION PLOTS 1-3 ARE 7'x8' TYPICAL, WITH 10.50' SPACE BETWEEN.

CREMATION PLOTS 4-6 ARE 8'x7' TYPICAL, WITH 7.00' SPACE BETWEEN.

ESTATE PLOTS 2-4 ARE 10'x10' TYPICAL, WITH 12.00' SPACE BETWEEN.

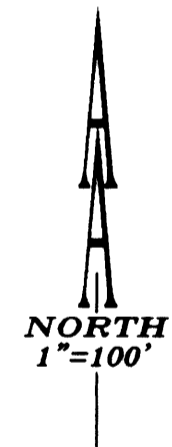
ALL PLOTS LINES ARE PARALLEL TO BASELINES SHOWN.

BL = BASELINE

**NARRATIVE**

THE PURPOSE OF THIS SURVEY IS TO MONUMENT CREMATION BURIAL PLOTS & PRIVATE ESTATES PLOTS AS DIRECTED BY ROSEBURG MEMORIAL GARDEN'S STAFF.

THIS PLAT IS BEING FILED AS A SURVEY ONLY IN ORDER TO ESTABLISH RECORD INFORMATION OF MONUMENTS SET.



**LEGEND:**

- SET 5/8" x 30" IRON ROD WITH YELLOW PLASTIC CAP MARKED "AA SURVEYING INC."
- FOUND 5/8" IRON ROD, UNLESS OTHERWISE NOTED
- △ CALCULATED POINT

**RECORD INFORMATION:**

- ( ) M1-55
- [ ] M64-29

REGISTERED  
PROFESSIONAL  
LAND SURVEYOR

*Michael P. Schulze*

OREGON  
NOVEMBER 30, 2007  
MICHAEL P. SCHULZE  
71827  
EXP. DATE: 6-30-12

**AA**  
**SURVEYING & ENGINEERING, INC.**  
ENGINEERING • SURVEYING • PLANNING

3076 NE DIAMOND LAKE BLVD.  
ROSEBURG, OREGON 97470  
TEL (541)672-2096  
FAX (541)672-0611