

FILED  
Date: 8-17-2010 By: J.C.  
This survey consists of:  
Map: M161-15  
Narrative:  
Corner Rpt:  
DOUGLAS COUNTY SURVEYOR

SURVEY NARRATIVE TO COMPLY WITH PARAGRAPH 209.250 OREGON REVISED STATUTES.

PURPOSE

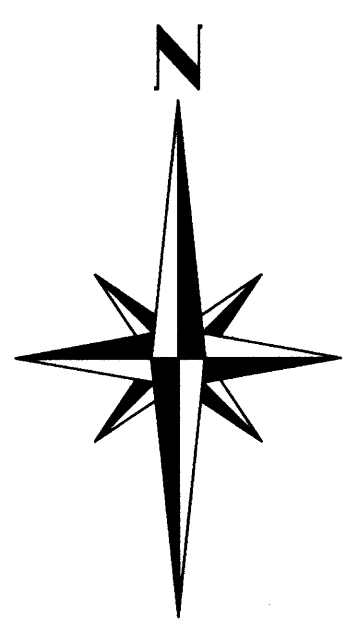
TO MARK PROPERTY LINES THAT SEPARATE STATE FOREST LANDS AND PRIVATE LANDS LOCATED IN SECTIONS 2 AND 11, TOWNSHIP 23 SOUTH, RANGE 10 WEST, WILLAMETTE MERIDIAN.

PROCEDURE

A RANDOM TRAVERSE USING A TOPCON GTS-233W TOTAL STATION WAS USED TO CONNECT THE CONTROLLING CORNERS. BEARING AND DISTANCE WERE COMPUTED AND OFFSETS CALCULATED TO POINTS ON TRUELINE FOR CARSONITE BOUNDARY MARKERS. ALL CORNER ACCESSORIES WERE MARKED AS OUTLINED IN THE "MANUAL OF INSTRUCTIONS FOR SURVEY OF THE PUBLIC LANDS OF THE U.S." 1973. BEARINGS TO ACCESSORIES WERE TAKEN WITH A STAFF COMPASS SET AT 19° EAST MAGNETIC DECLINATION. DISTANCES WERE MEASURED TO AN ALUMINUM NAIL IN BT FACE. FOR A DETAILED REPORT ON FOUND CORNERS SEE COUNTY RECORDS.

BASIS OF BEARING

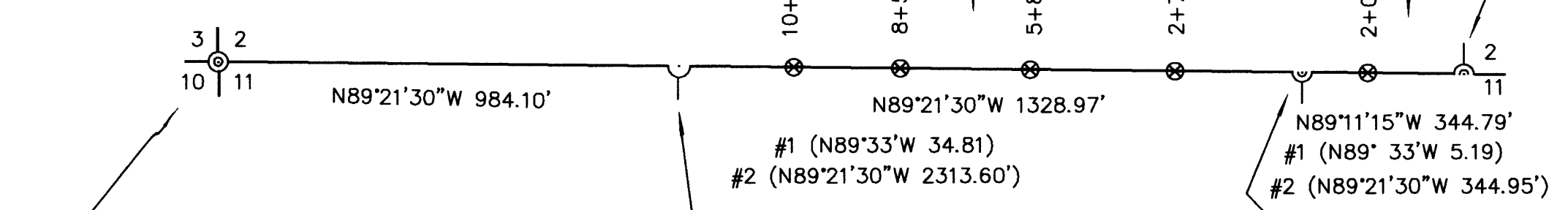
DOUGLAS COUNTY SURVEYOR'S OFFICE 1958 SURVEY (COUNTY SURVEY NO. M8-72) FROM THE SOUTH ONE QUARTER CORNER OF SECTION 2 ONLY TO THE SECTION CORNER COMMON TO SECTIONS 2, 3, 10 AND 11, TOWNSHIP 23 SOUTH, RANGE 10 WEST, WILLAMETTE MERIDIAN.



LEGEND

- OSDF P/C = OREGON STATE DEPARTMENT OF FORESTRY 1 1/2" X 36" ALUMINUM PIPE WITH 3 3/4" ALUMINUM CAP WITH MAGNETIC INSERT
- OSBF P/C = OREGON STATE BOARD OF FORESTRY 1 1/2" X 36" GALVANIZED IRON PIPE WITH 3" BRONZE CAP
- DCSO P/C = DOUGLAS COUNTY SURVEYORS OFFICE 1 1/2" GALVANIZED IRON PIPE AND BRONZE CAP
- = TRUE BLAZED AND POSTED
- BTT = BEARING TREE TAG
- BT = BEARING TREE
- WP = ORANGE CARSONITE MARKER CBM-250 LABELED WITNESS POST
- = MONUMENT FOUND
- = MONUMENT SET
- = ORANGE CARSONITE MARKER AND STATION CBM-250 LABELED BOUNDARY MARKER
- WPCP = 4" X 4" X 72" WHITE PAINTED CEDAR POST
- BLM BTT = BUREAU OF LAND MANAGEMENT BEARING TREE TAG
- #1 ( ) = RECORD BEARING AND DISTANCE IN CHAINS LEVI WALKER, 1906, CONTRACT NO. 763
- #2 ( ) = RECORD BEARING AND DISTANCE IN FEET DOUGLAS COUNTY SURVEYORS OFFICE, 1958, COUNTY SURVEY NO. M8-72

1/4 CORNER FOUND  
OSBF P/C, 1958, (IN PLACE)  
16" FIR (1906) S44E 21 LKS.  
(NOW 28" X 3' HIGH ROTTED  
STUB IN PLACE, AXE WORK  
VISIBLE)  
12" FIR (1906) N34E 13 LKS.  
(MISSING)  
40" FIR (1958) N20E 46.7'  
(NOW 35" X 3' HIGH ROTTED  
STUMP IN PLACE, FACE ROTTED)  
36" FIR (1958) N65W 36.5'  
(NOW 36" X 3' HIGH ROTTED  
STUMP IN PLACE, AXE WORK  
VISIBLE)  
REWITNESSED  
17" FIR N43W 14.0' TO ALUMINUM  
NAIL IN BT FACE SCRIBED  
(1/4S2BT) BTT  
12" FIR N04E 21.45' TO ALUMINUM  
NAIL IN BT FACE SCRIBED  
(1/4S2BT) BTT  
WP N28W 4.2' TO BASE  
WP N23E 3.1' TO BASE



I, JAMES M. MCINTOSH, HEREBY CERTIFY THAT THIS SURVEY WAS PREPARED USING HP CARTRIDGE NO. C4871A ON CONTINENTAL NO. JPC4M2 POLYESTER FILM.  
*James M. McIntosh* DATE: 8-12-2010

SECTION CORNER FOUND  
DCSO P/C, 1958 (NOW 16" ABOVE GROUND IN PLACE)  
4" FIR (ORIG.) N25W 28 LKS. (NOW 14" X 2' HIGH ROTTED STUMP IN PLACE, AXE WORK VISIBLE)  
10" FIR N49E 16.5' (NOW 26" IN PLACE, FACE CLOSED, BLM BTT)  
10" FIR N80W 16.8' (NOW 21" IN PLACE, FACE CLOSED, BLM BTT)  
30" FIR S50W 14.3' (NOW 55" IN PLACE, FACE CLOSED, BLM BTT)  
11" MYRTLE S58 1/2E 40.9' (NOW 13" IN PLACE, FACE ROTTED, AXE WORK VISIBLE)

WEST 1/16 CORNER (SECTION 11 ONLY) ESTABLISHED  
SET OSDF P/C, 34" IN GROUND  
36" FIR S74E 46.0' TO ALUMINUM NAIL IN BT FACE SCRIBED (1/16S11BT) BTT  
WP S62W 2.8' TO BASE  
WPCP N16E 3.4'

1/4 CORNER FOUND  
DCSO P/C, 1958 (IN PLACE)  
13" HEMLOCK S85W 22.3' (NOW 31" IN PLACE, FACE CLOSED, ADDED BTT)  
7" HEMLOCK S68 1/2E 40.7' (NOW 29" IN PLACE, FACE CLOSED, ADDED BTT)  
REWITNESSED  
WP S42E 2.90' TO BASE  
WP S23W 2.95' TO BASE

SURVEY FOR:  
STATE OF OREGON - DEPARTMENT OF FORESTRY

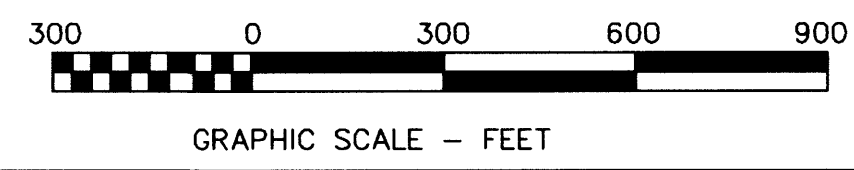
SECTION LINE BETWEEN  
SECTIONS 2 & 11, T.23S., R.10W., W.M.

DOUGLAS COUNTY, OREGON  
TOPCON TOTAL STATION SURVEY BY:  
J.M. MCINTOSH, T. VAN VLEET  
AND R.C. HALL  
DRAWN BY: T. VAN VLEET  
JULY 14, 2010  
SCALE 1" = 300'

SURVEY BY:  
**REGISTERED PROFESSIONAL LAND SURVEYOR**  
*James M. McIntosh*  
**OREGON**  
JULY 13, 1984  
**JAMES M. MCINTOSH**  
2103

JAMES M. MCINTOSH  
63612 FIFTH ROAD  
COOS BAY, OREGON

EXPIRATION DATE OF CERTIFICATE 12-31-10



ODF PLAT NO. 458